

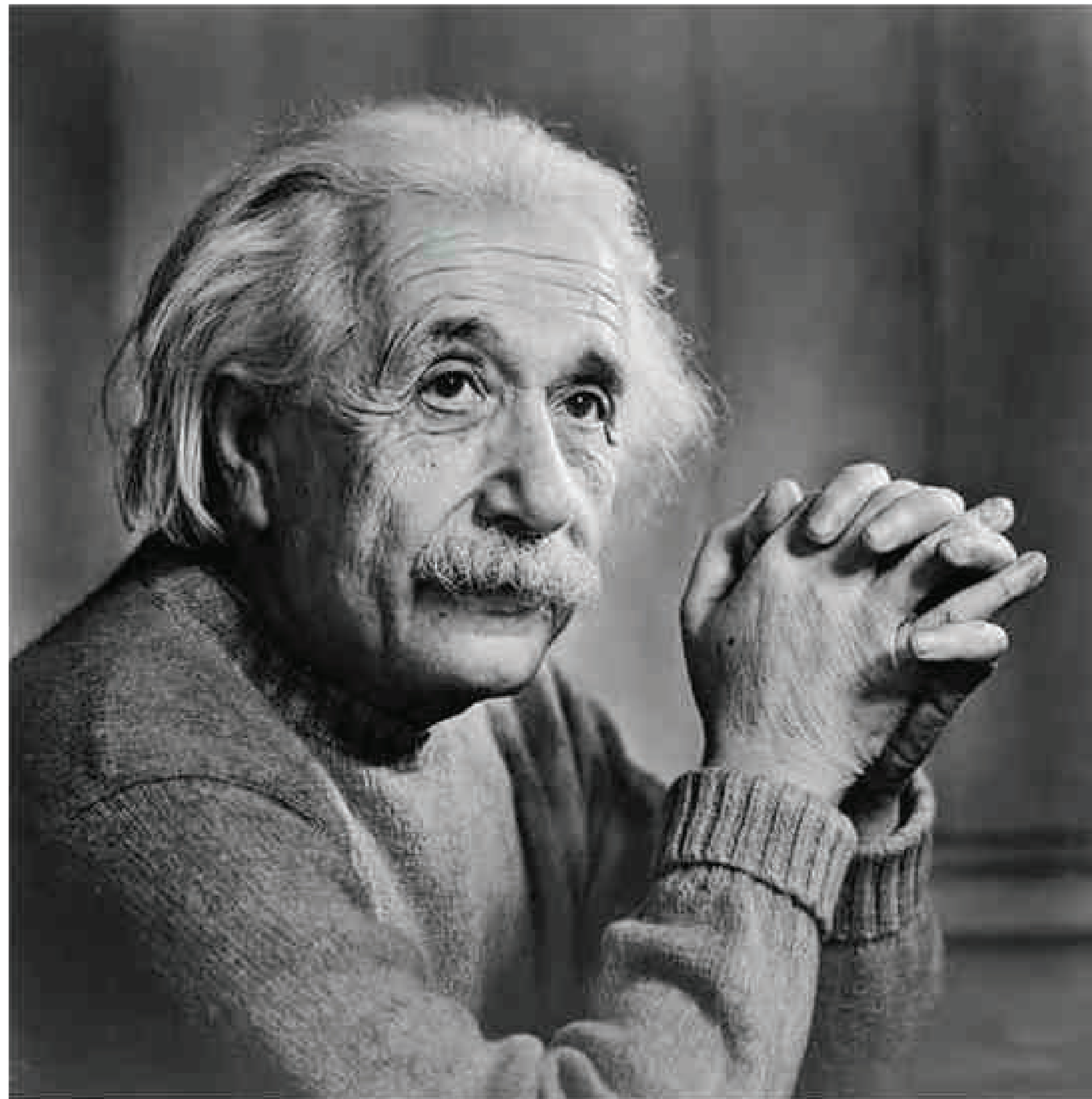
NEXT UNIVERSITY - STEELCASE

---

**THE  
NEXT HUB**

---

EDUCATION IN MOTION



## PHILOSOPHY

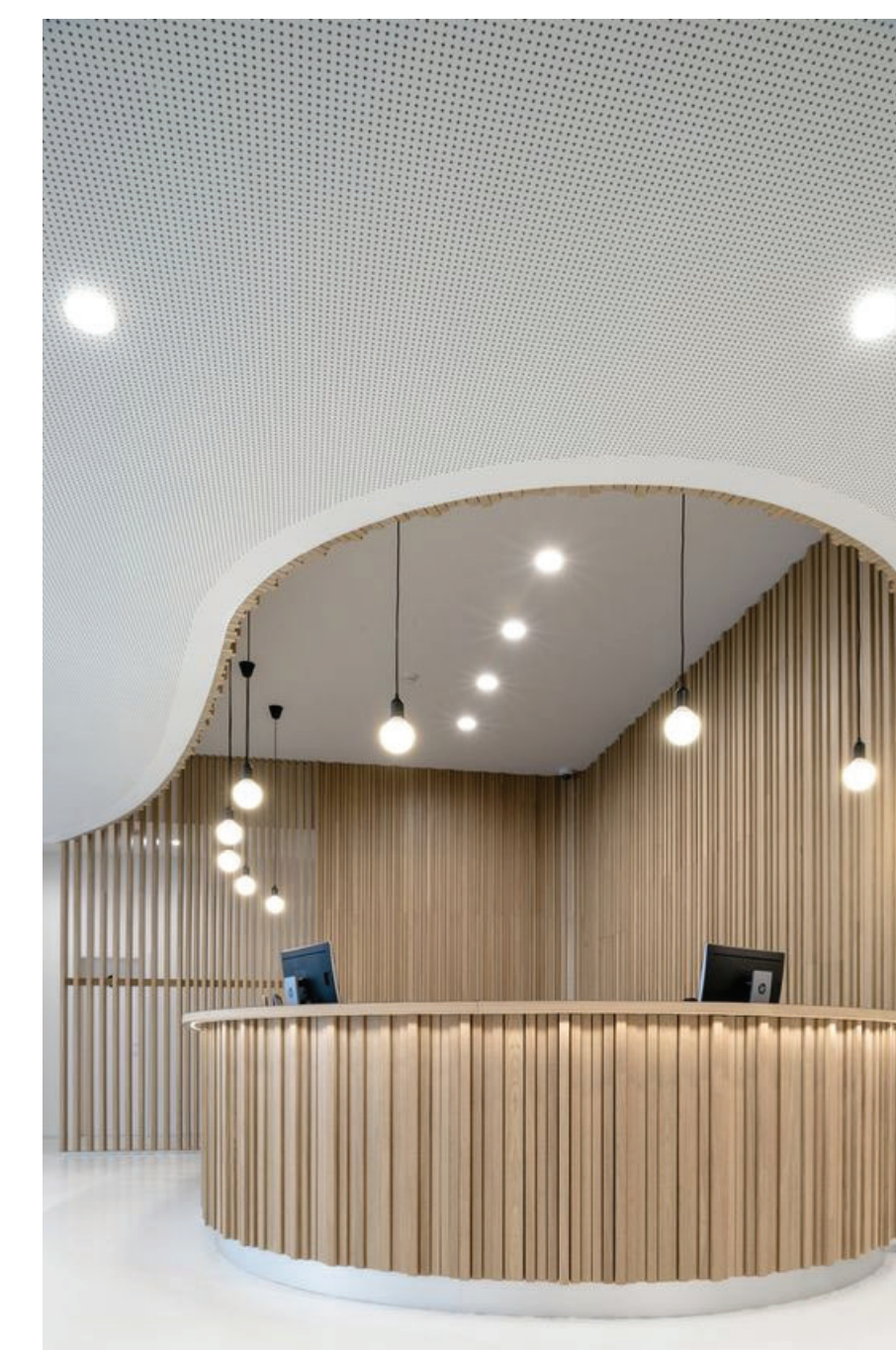
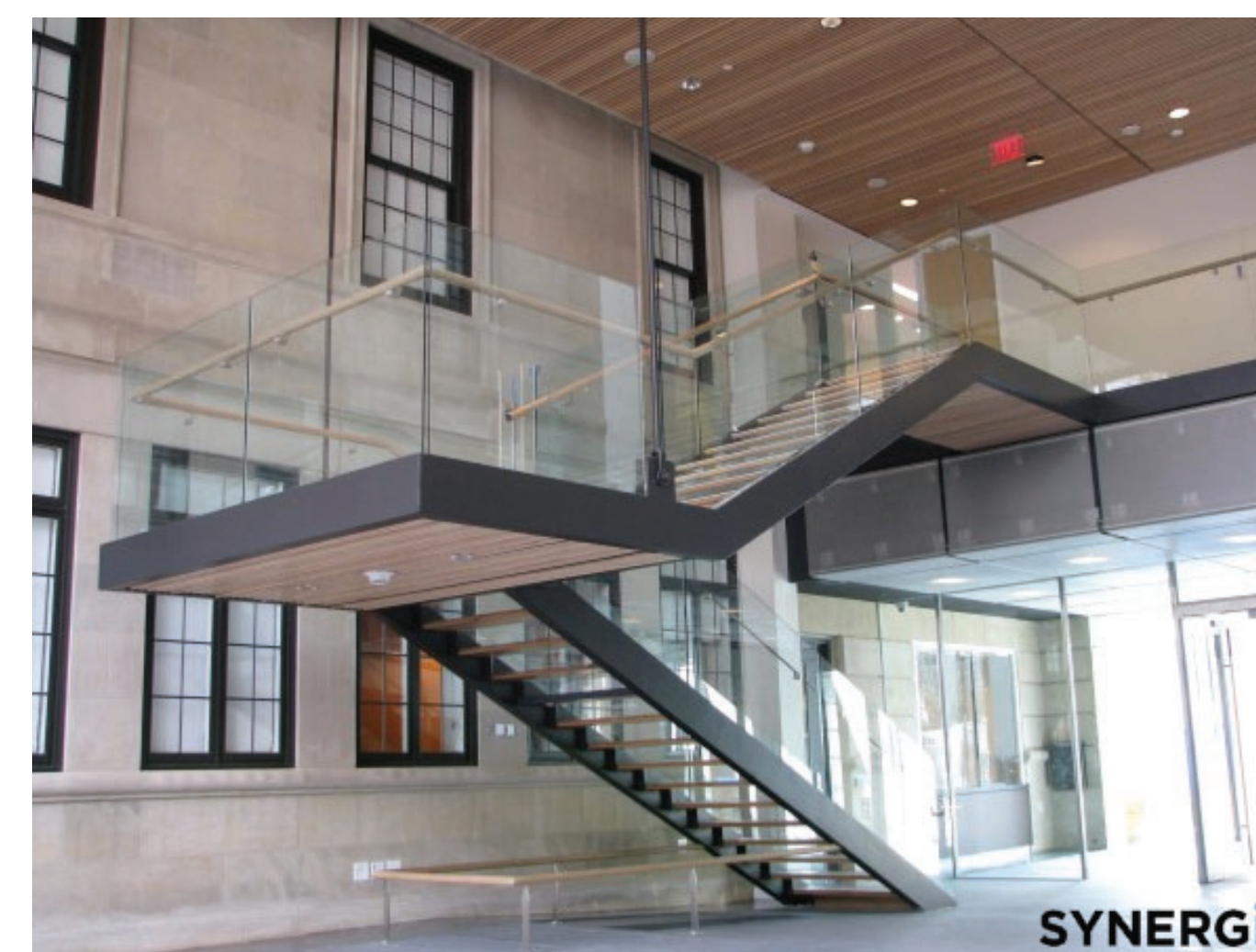
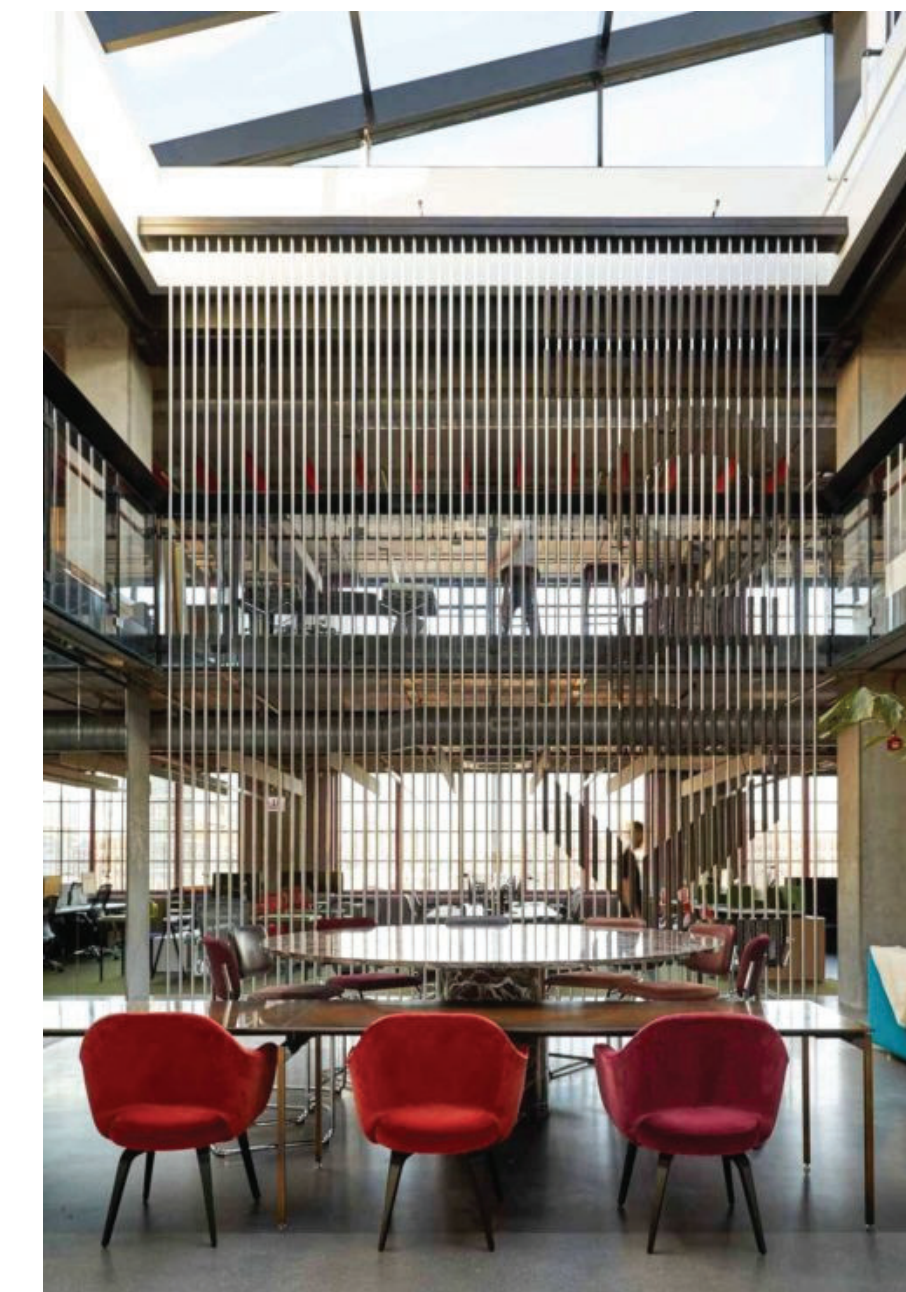
While researching throughout the semester an emphasis on variety of spaces emerged as a necessary provision any education or work environment should provide. The notion of social, active, and blended learning gave rise to a concept centered around the variety nature already provides, the states of matter. Embodying the two - physics and education - is Albert Einstein, who serves as a great example for what it looks like to be a life-long student.

## PHYSICS

Matter has three states - solid, liquid, and gas. In each state there is energy; this energy takes the form of motion and heat. Particles bump into each other in every phase of matter. In the same way, knowledge transfer and human interaction can happen in any type of educational setting (or “state”). Thus, it is the goal for this project to honor a variety of needs and become the “matter” that transforms – energizing the movement of knowledge.

## GETTING STARTED





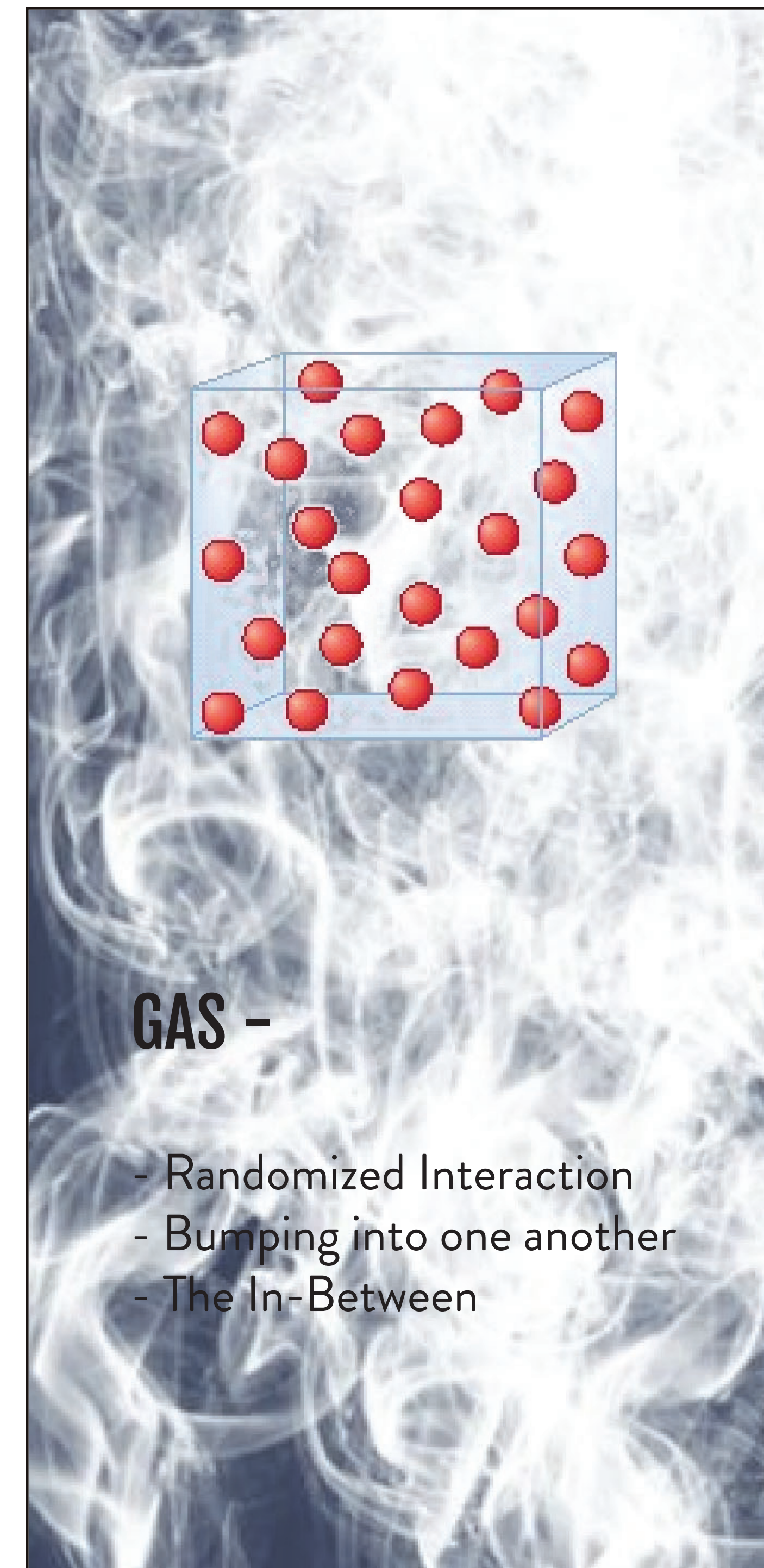
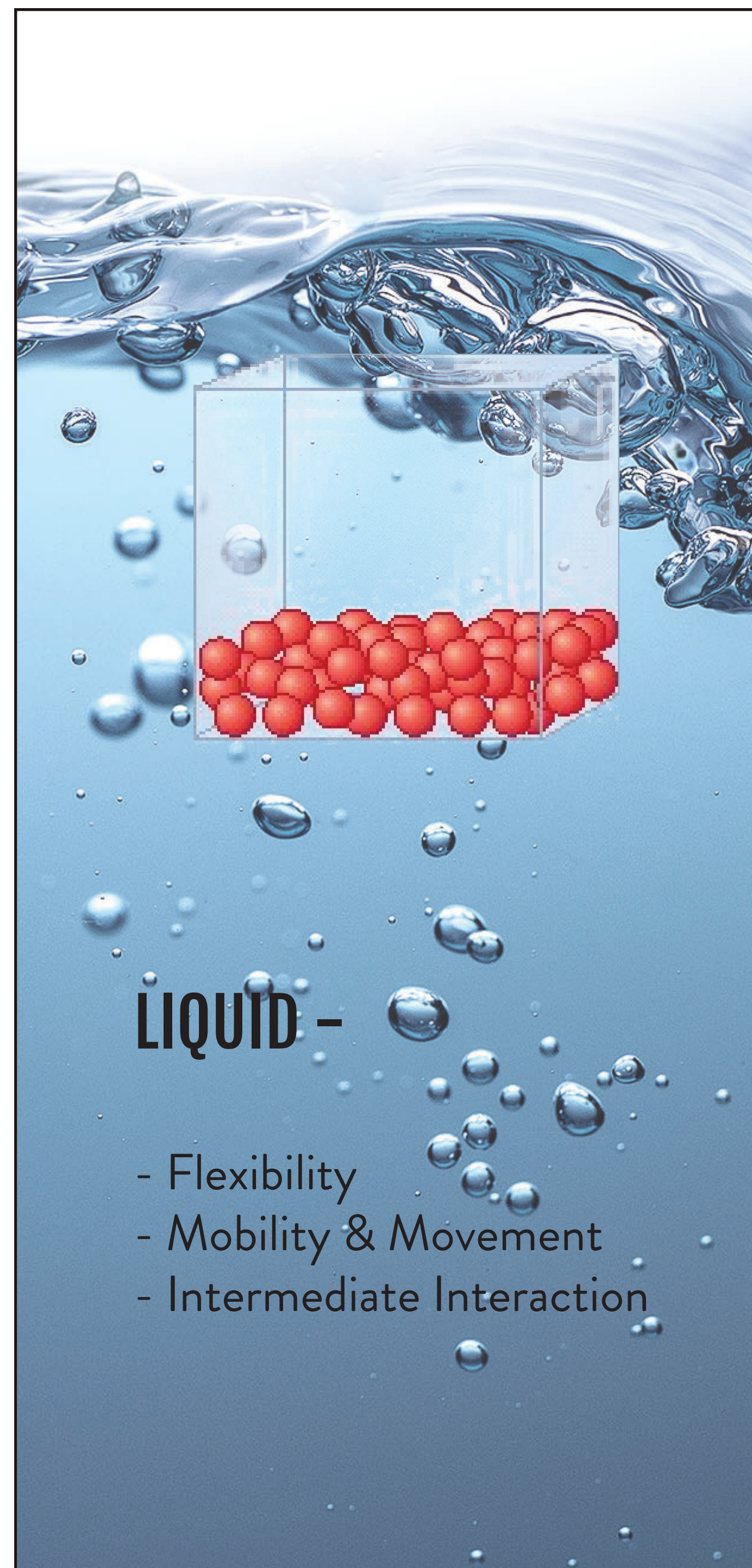
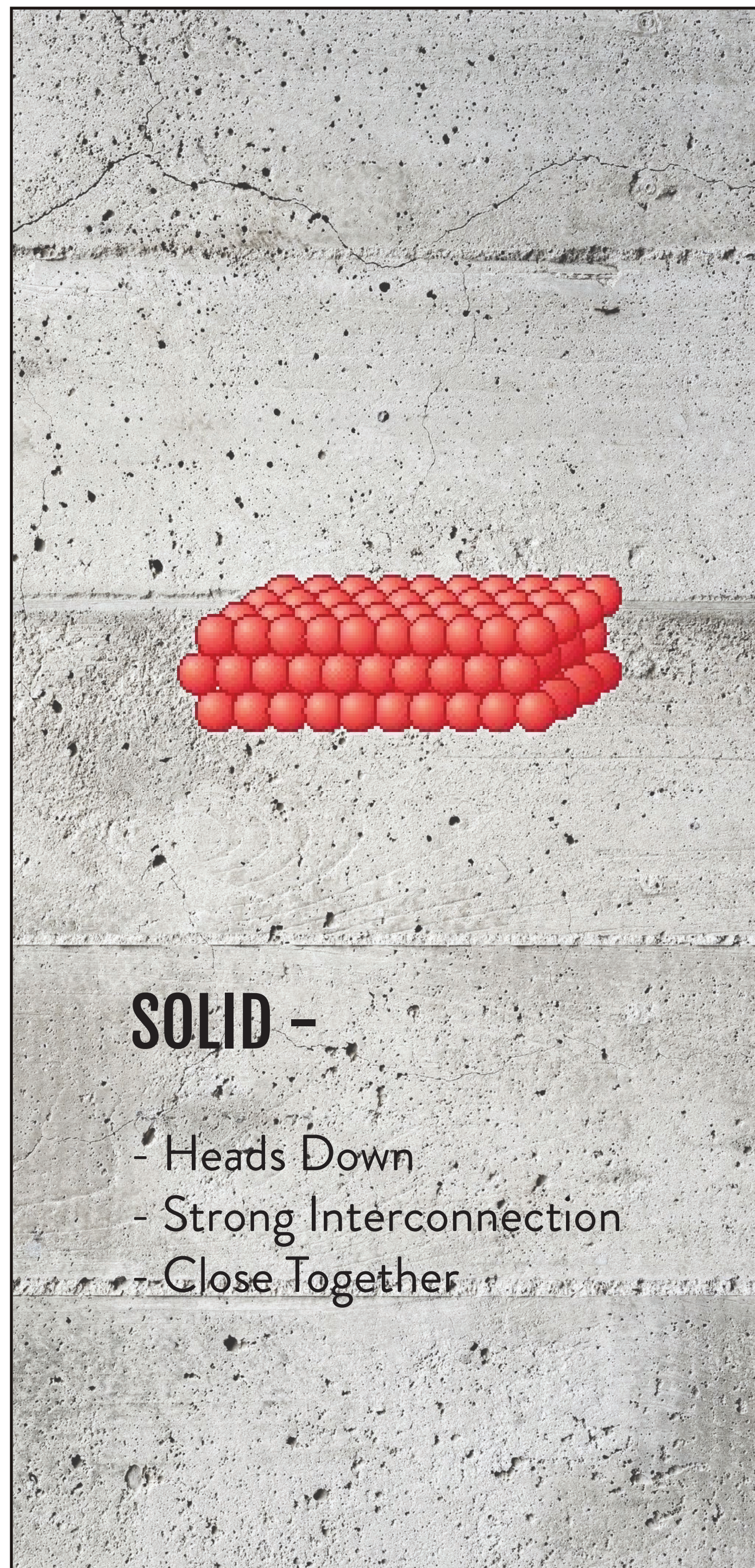
CONCEPT

EXTENSION OF LANDING

FORM/FUNCTION

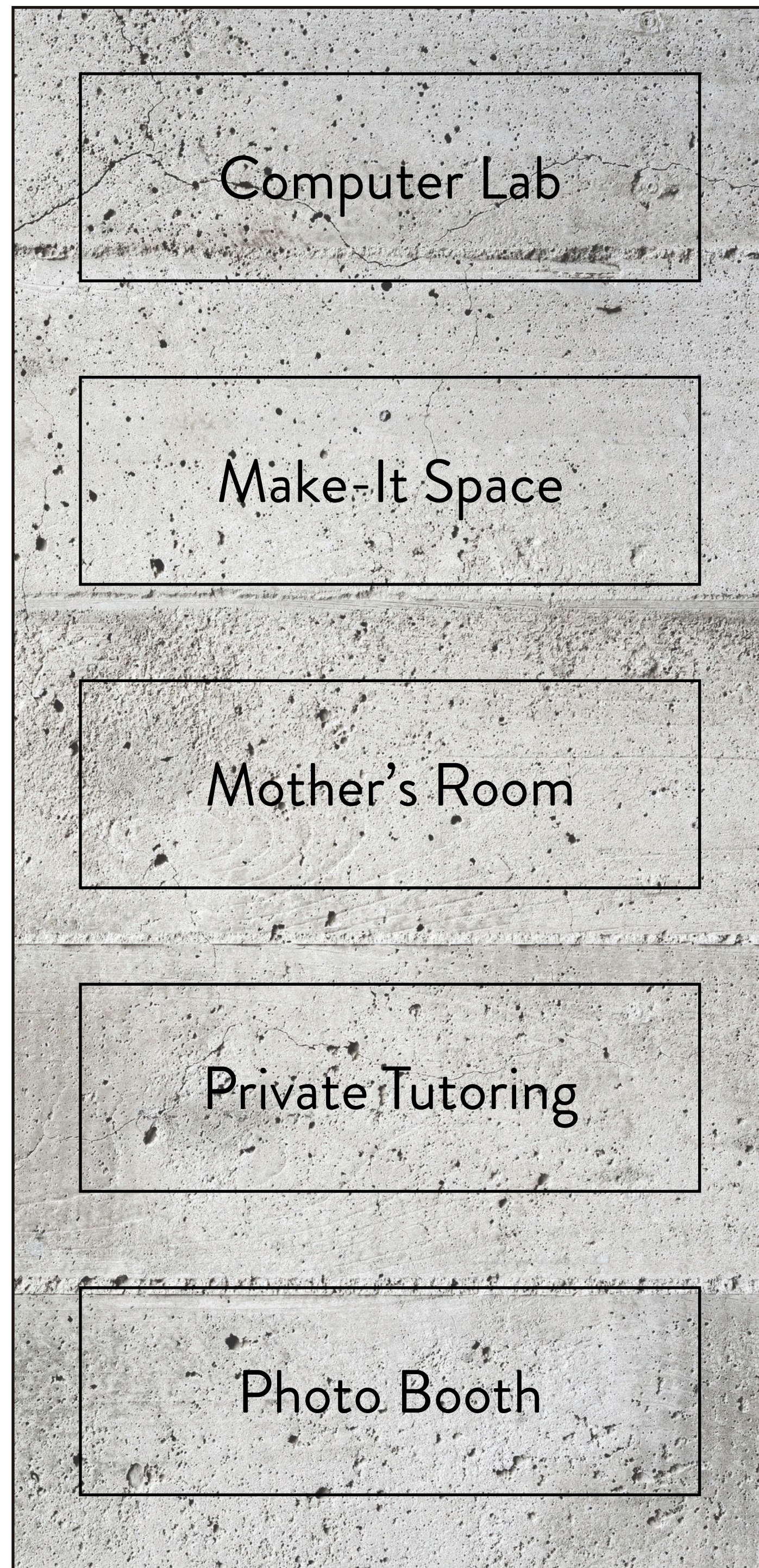
INSPIRATION



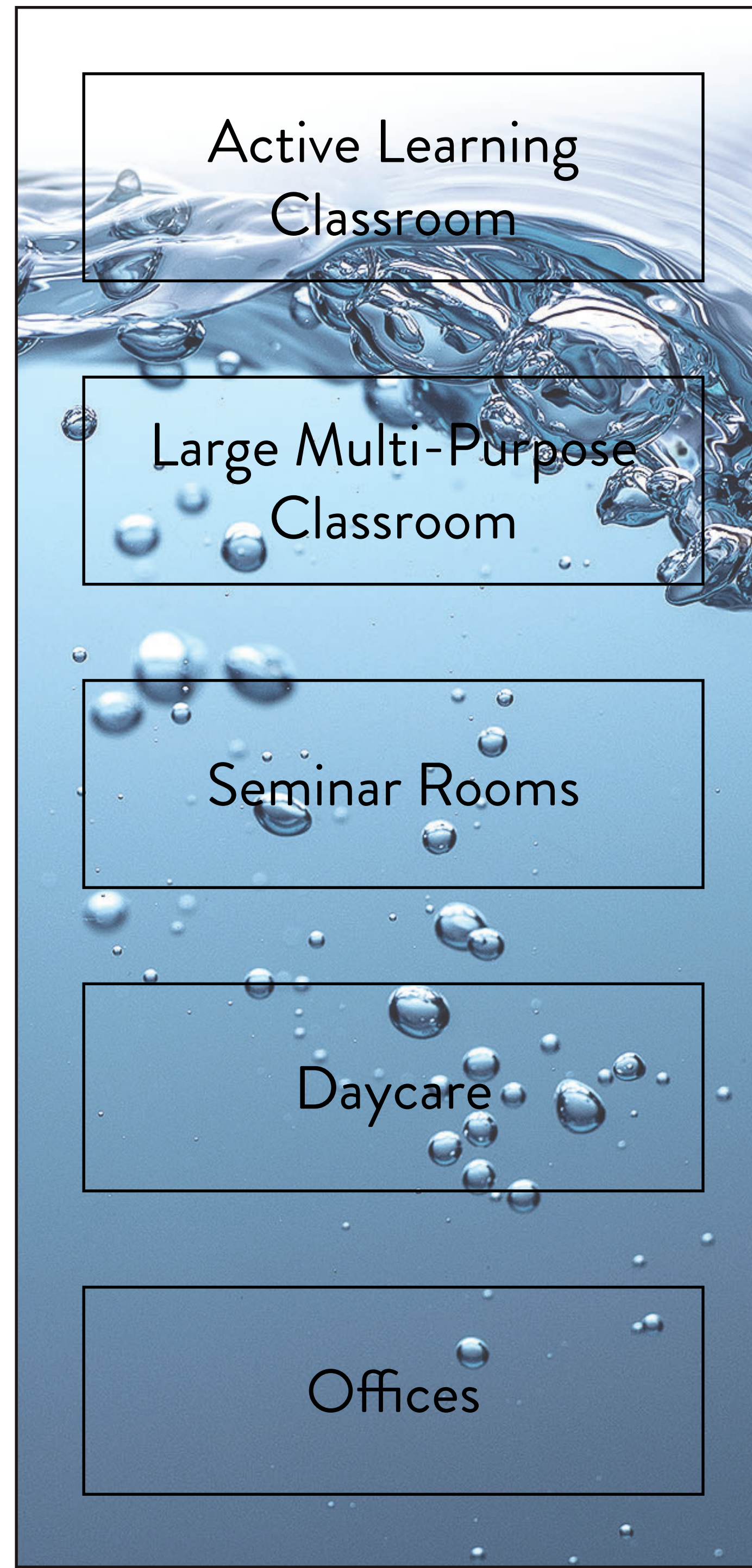


**WHAT MATTERS IN EDUCATION**

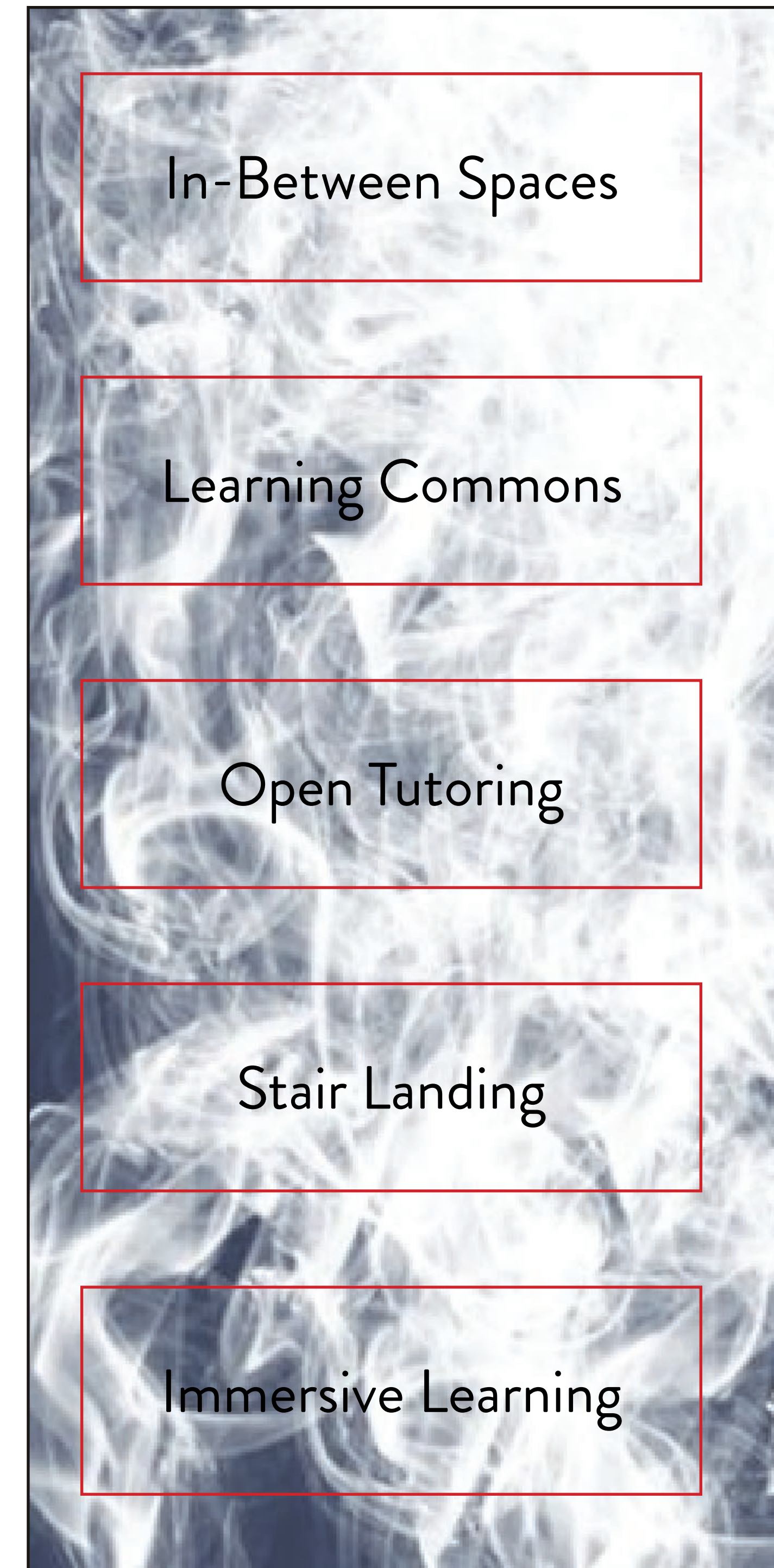




**SOLID SPACES**



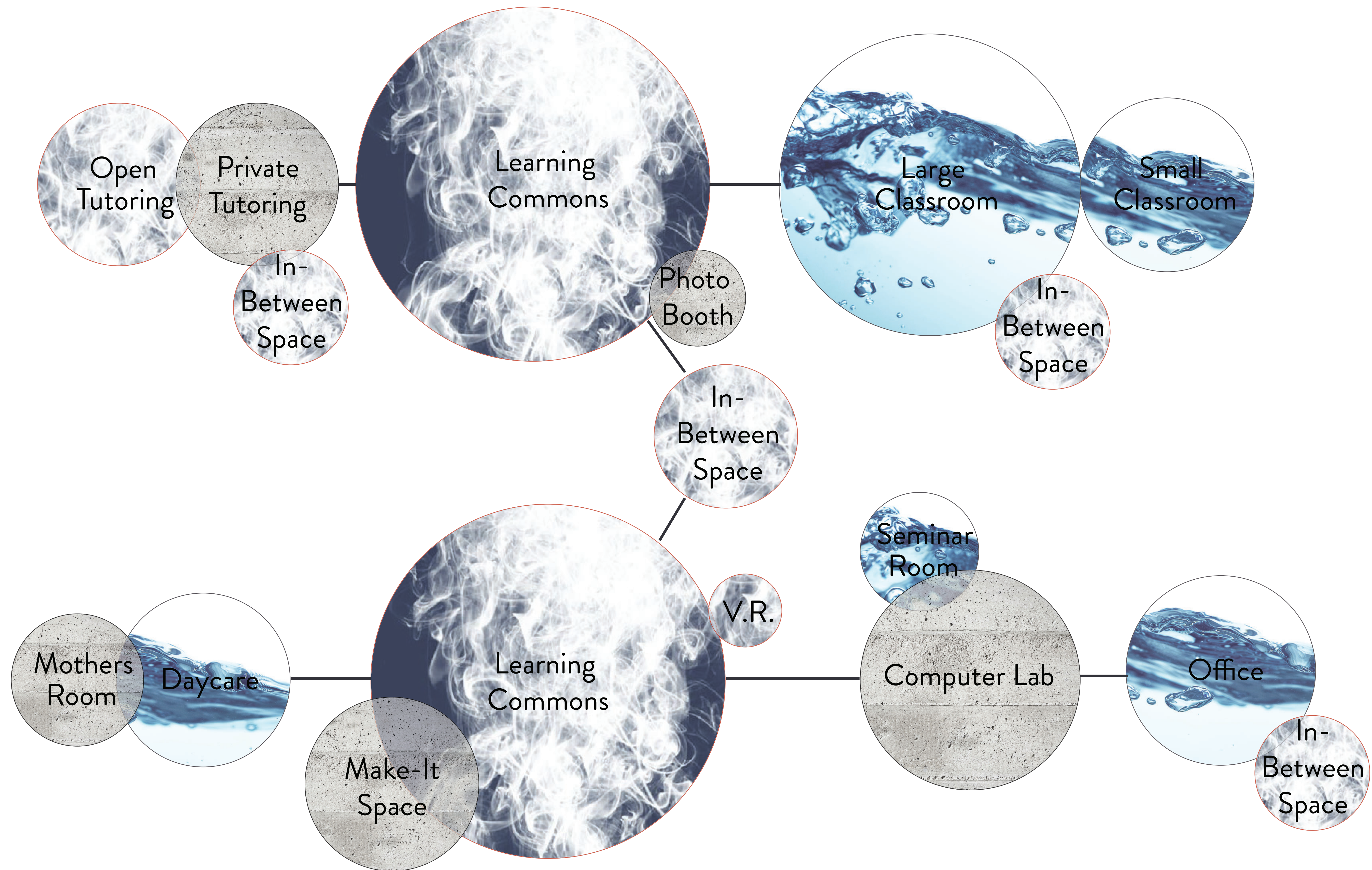
**LIQUID SPACES**



**GASEOUS SPACES**

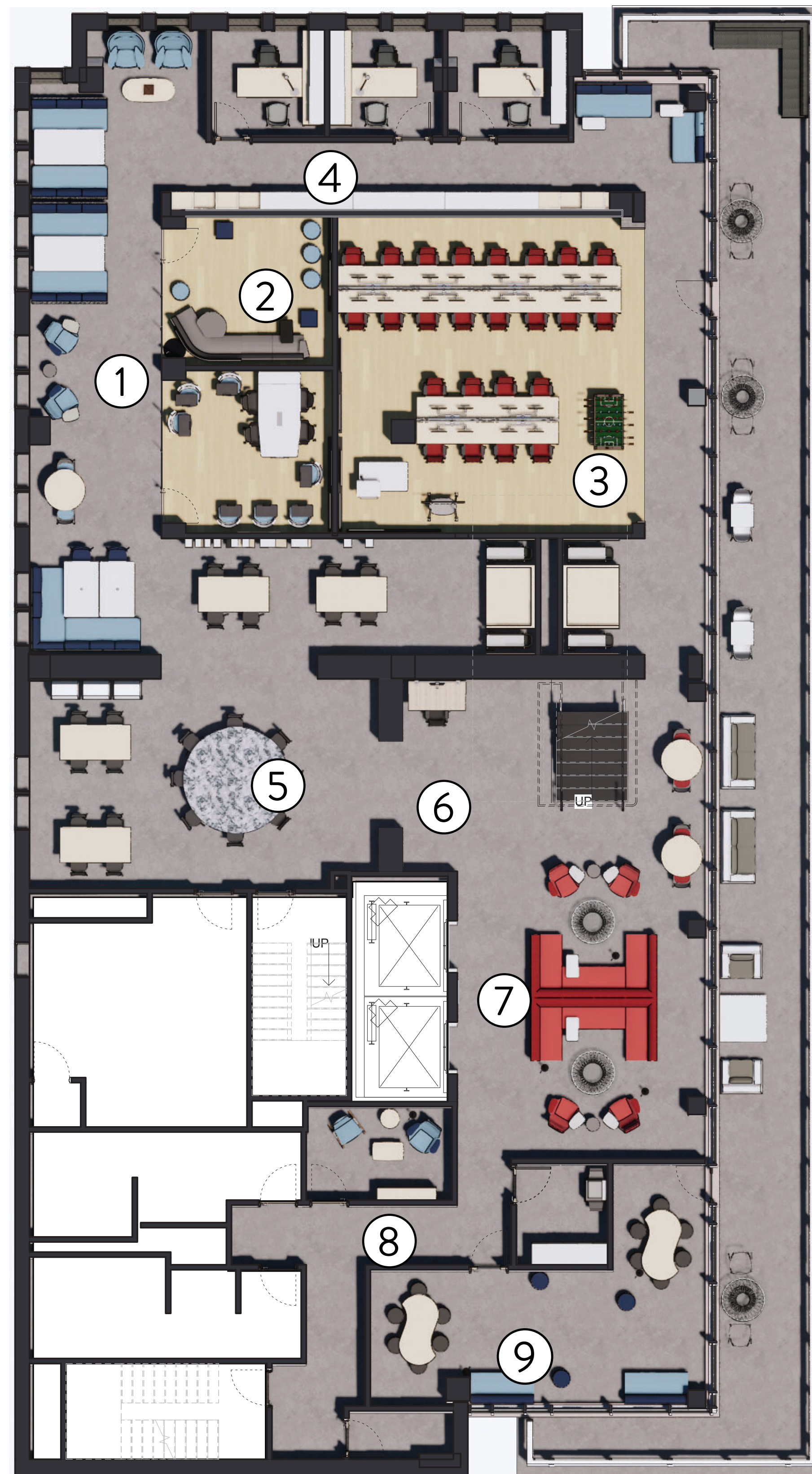
## **SPATIAL GROUPING**





## SPATIAL ADJACENCIES





10th Floor Plan



11th Floor Plan

## PLAN KEY

1. Faculty Lounge
2. Seminar Rooms
3. Computer Room
4. Office Rooms
5. Make-it Space
6. Immersive Learning
7. Learning Commons
8. Mothers Room
9. Daycare Center
10. Large Multi-Purpose Classroom
11. Small Active Learning Classroom
12. "In-Between" Space
13. Open & Closed Tutoring Center

## FLOOR PLANS

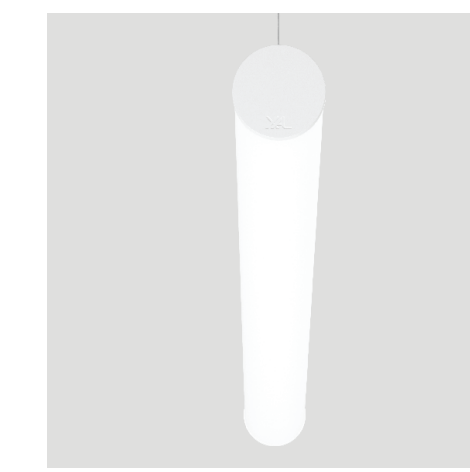




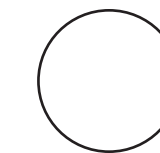
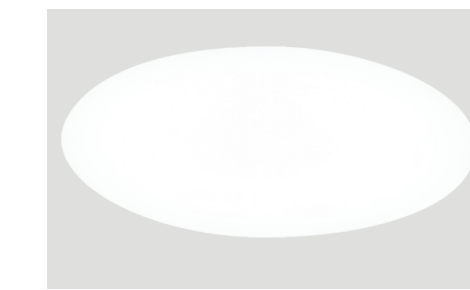
10th Floor RCP



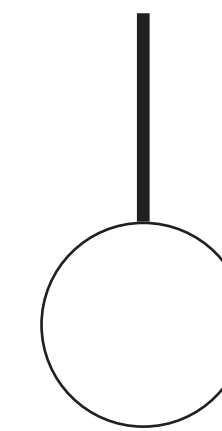
11th Floor RCP



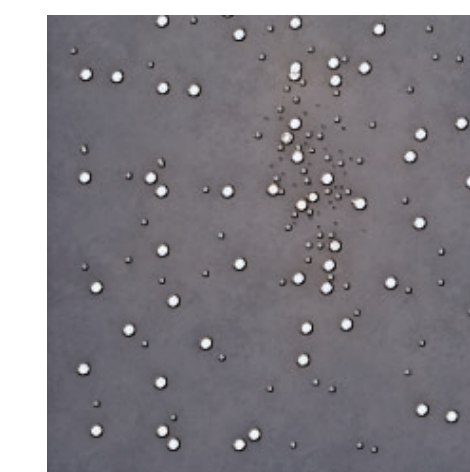
XAL - Tubo 4.0



XAL - Round MENO



Custom Drop Down White  
Orb Lite



Evaporative Ceiling



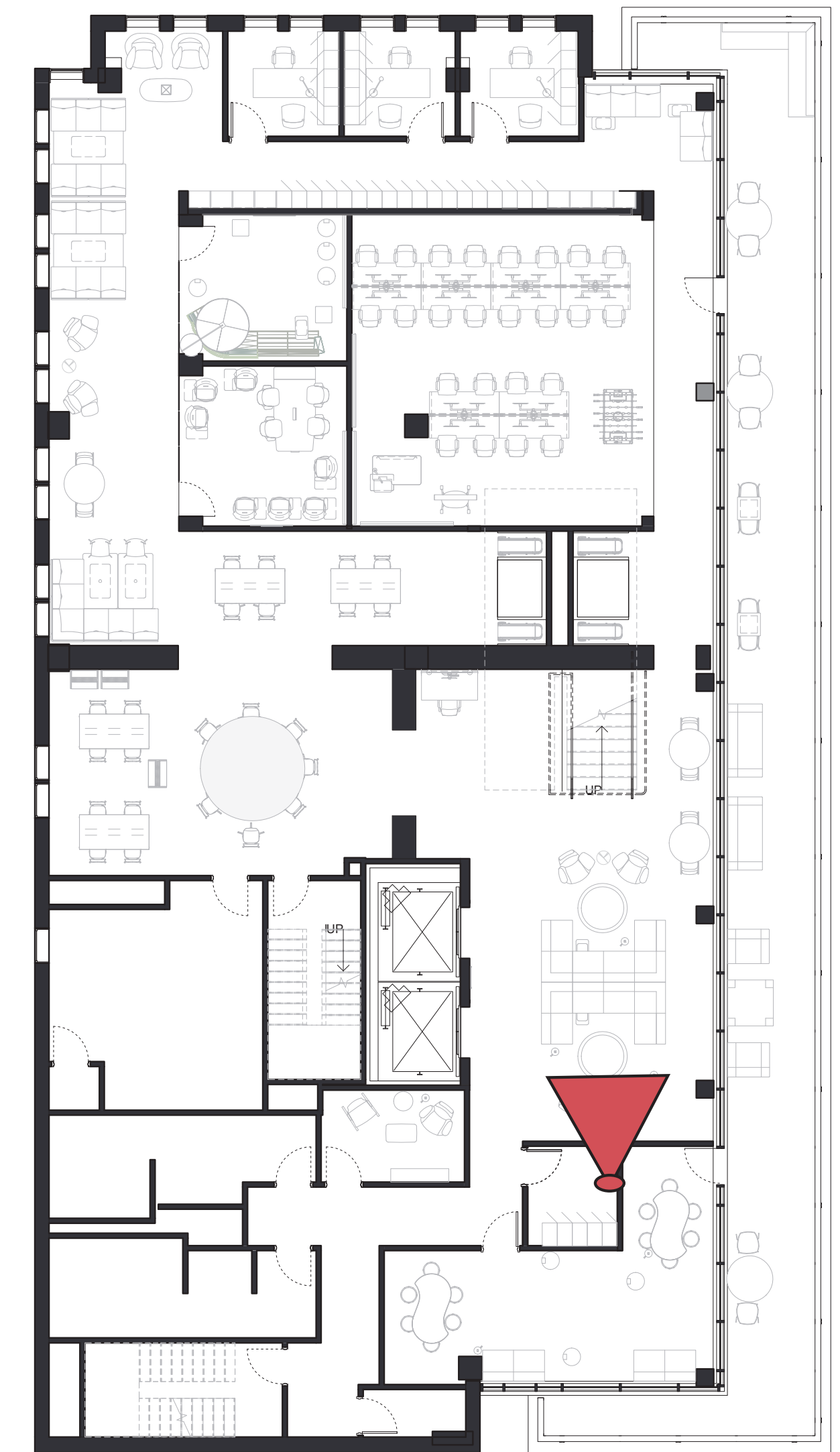
Custom Acoustic Ceiling  
Cloud (Liquid)



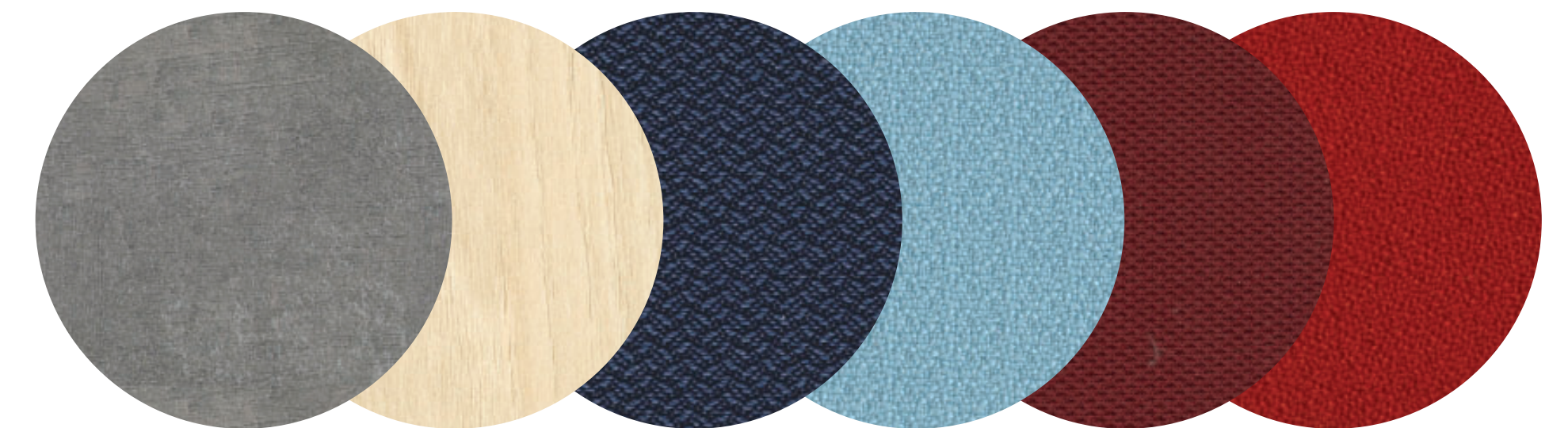
Custom Acoustic Ceiling  
Cloud (Solid)

## REFLECTED CEILING PLANS





10th Floor

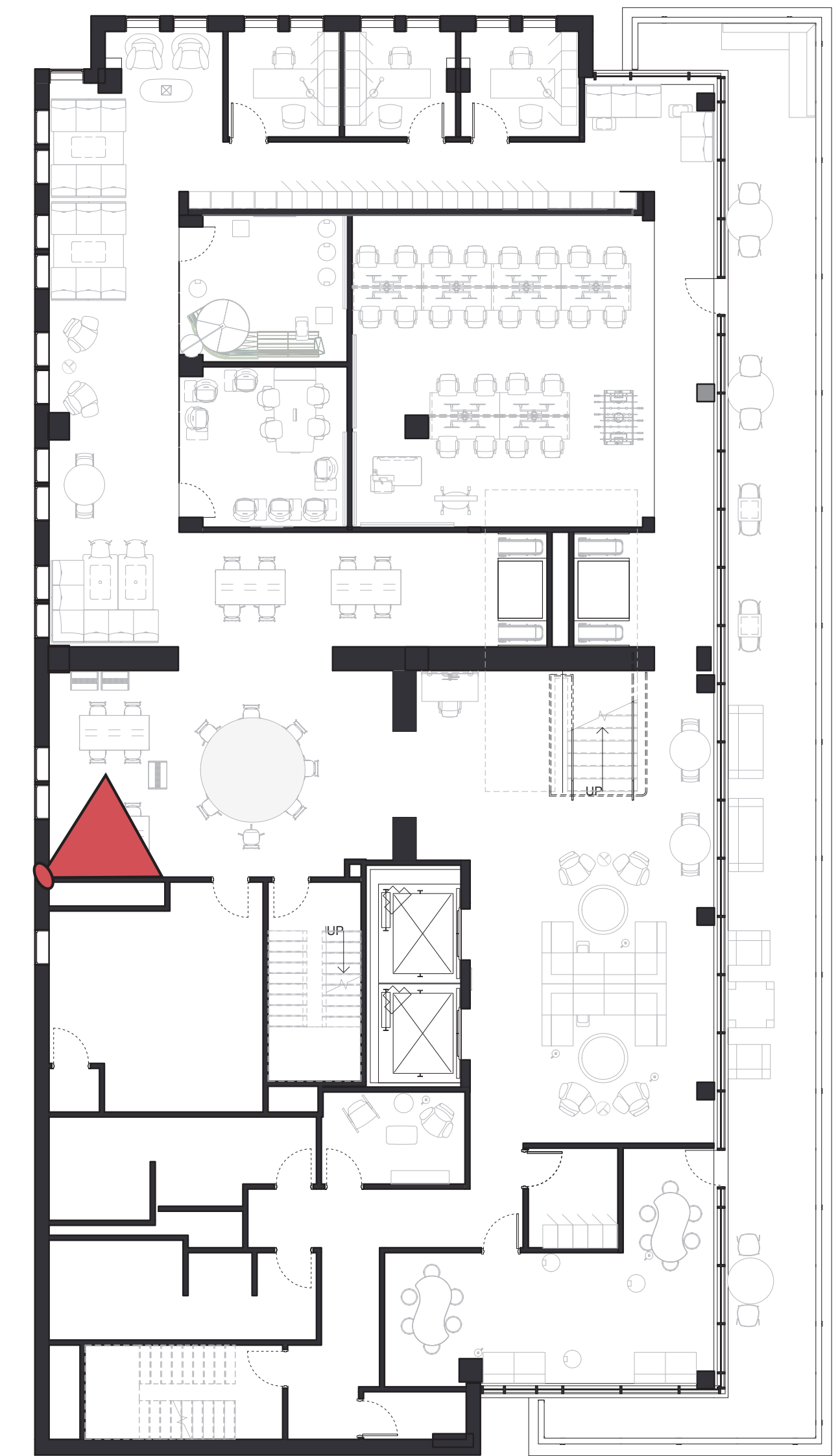


## 10TH FLOOR – LOBBY COMMONS







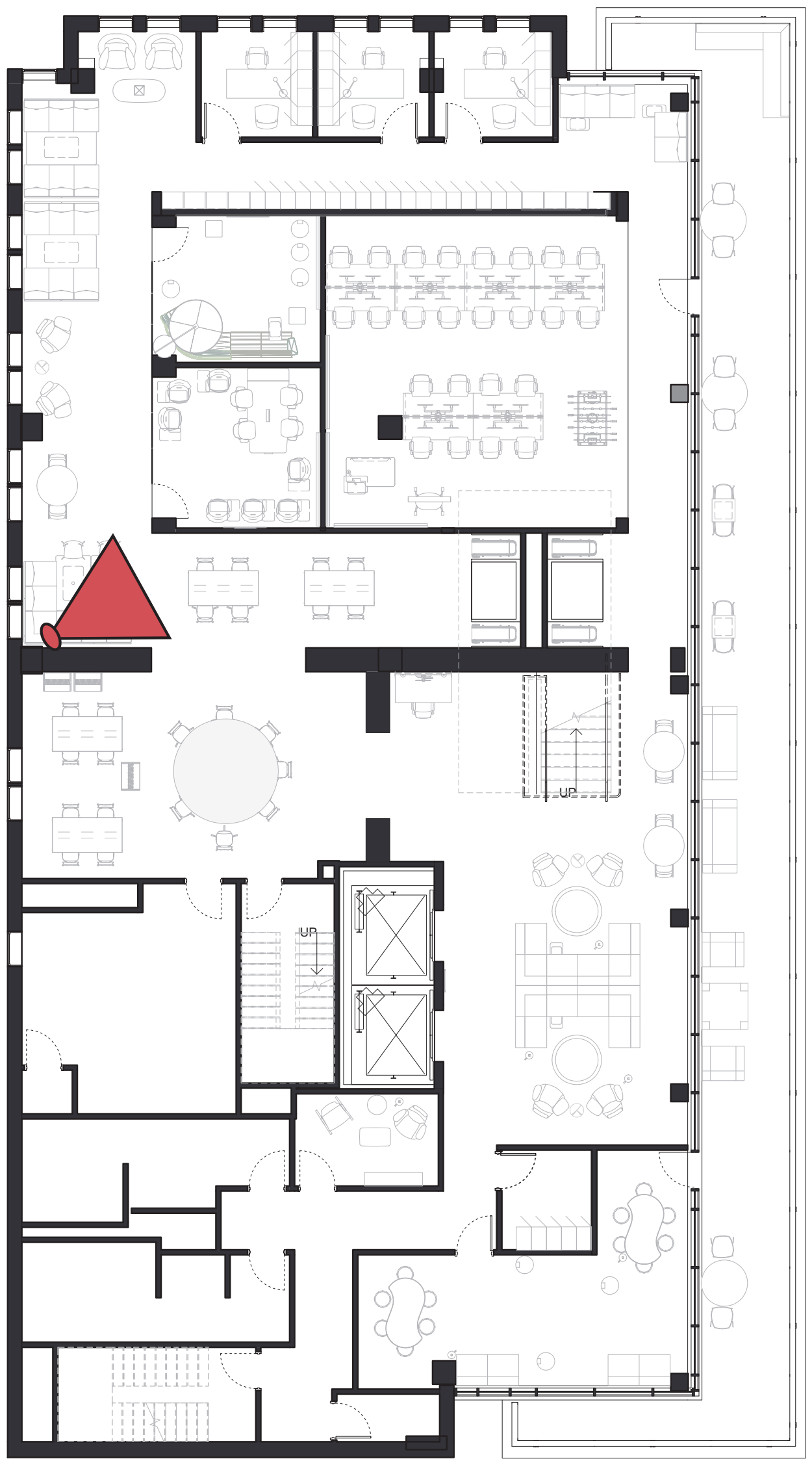


10th Floor

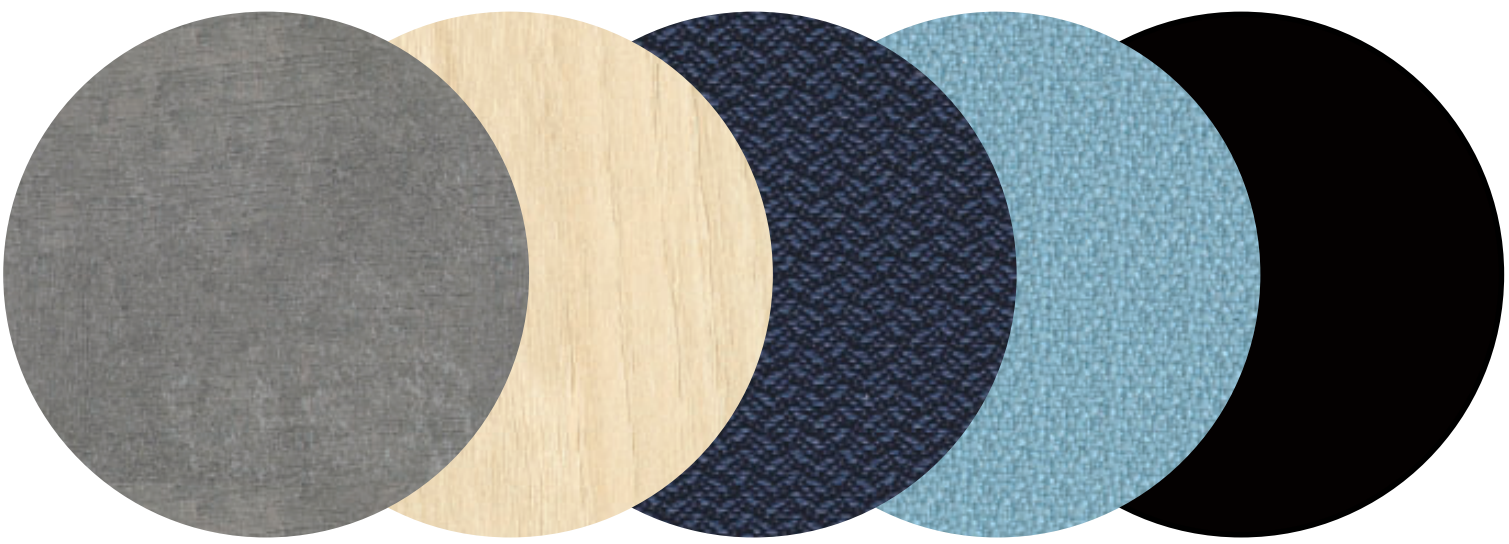


## 10TH FLOOR – MAKE IT SPACE



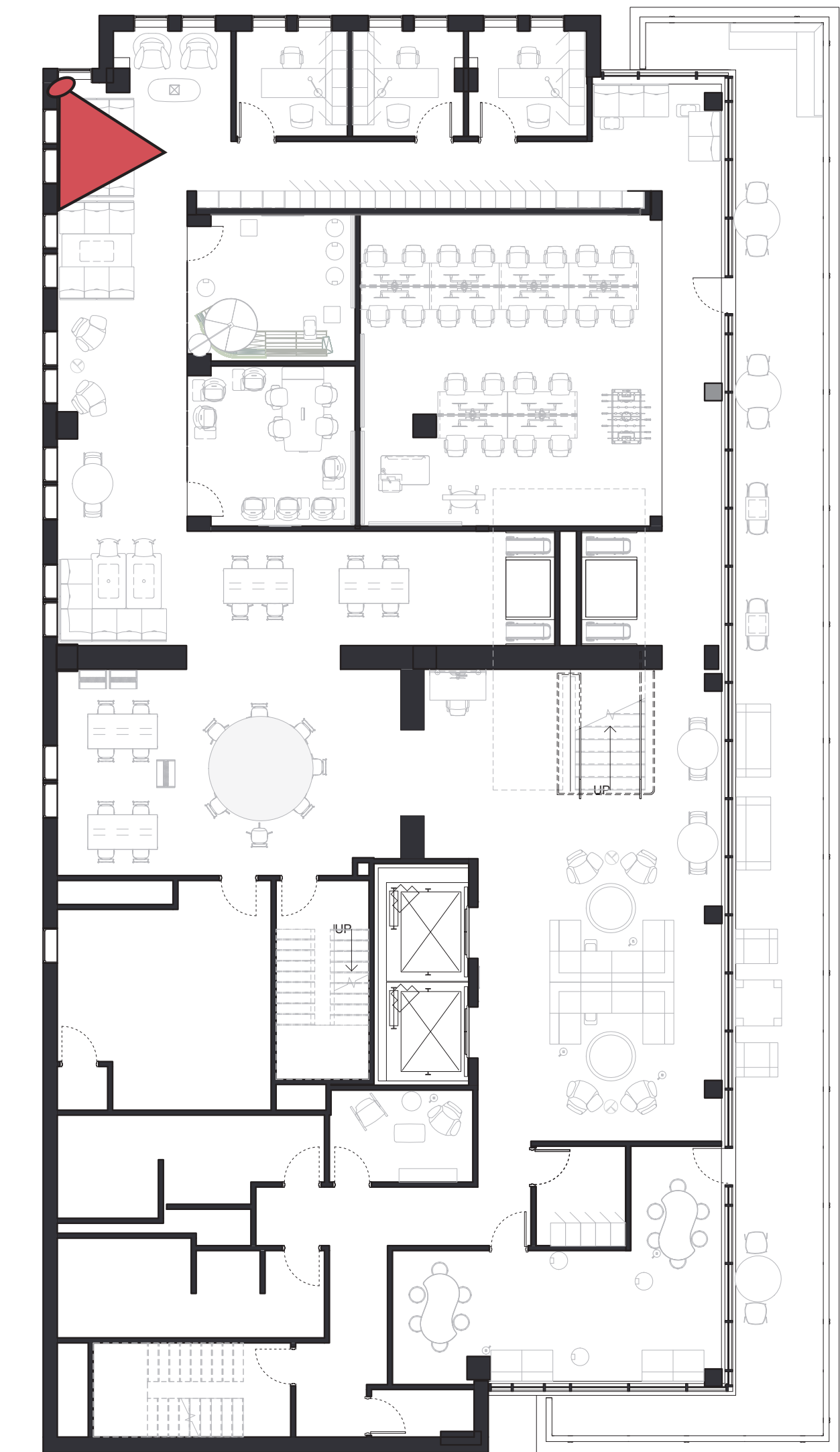


10th Floor

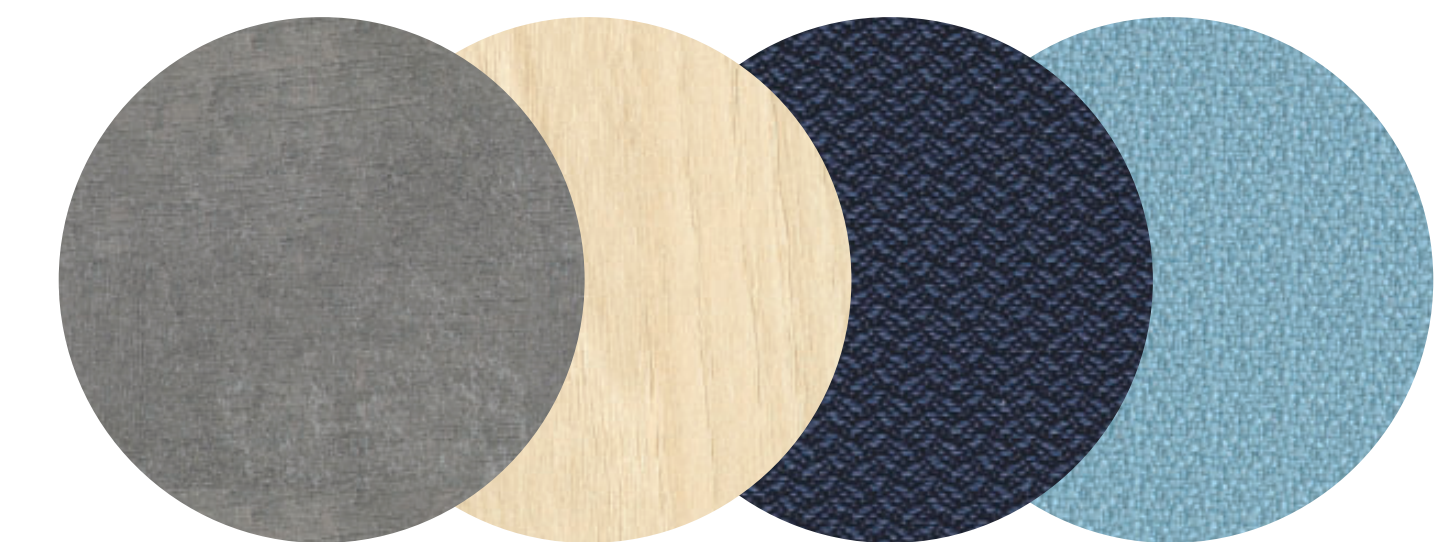


**10TH FLOOR – MAKE IT SPACE TRANSITION TO FACULTY HUB**





10th Floor

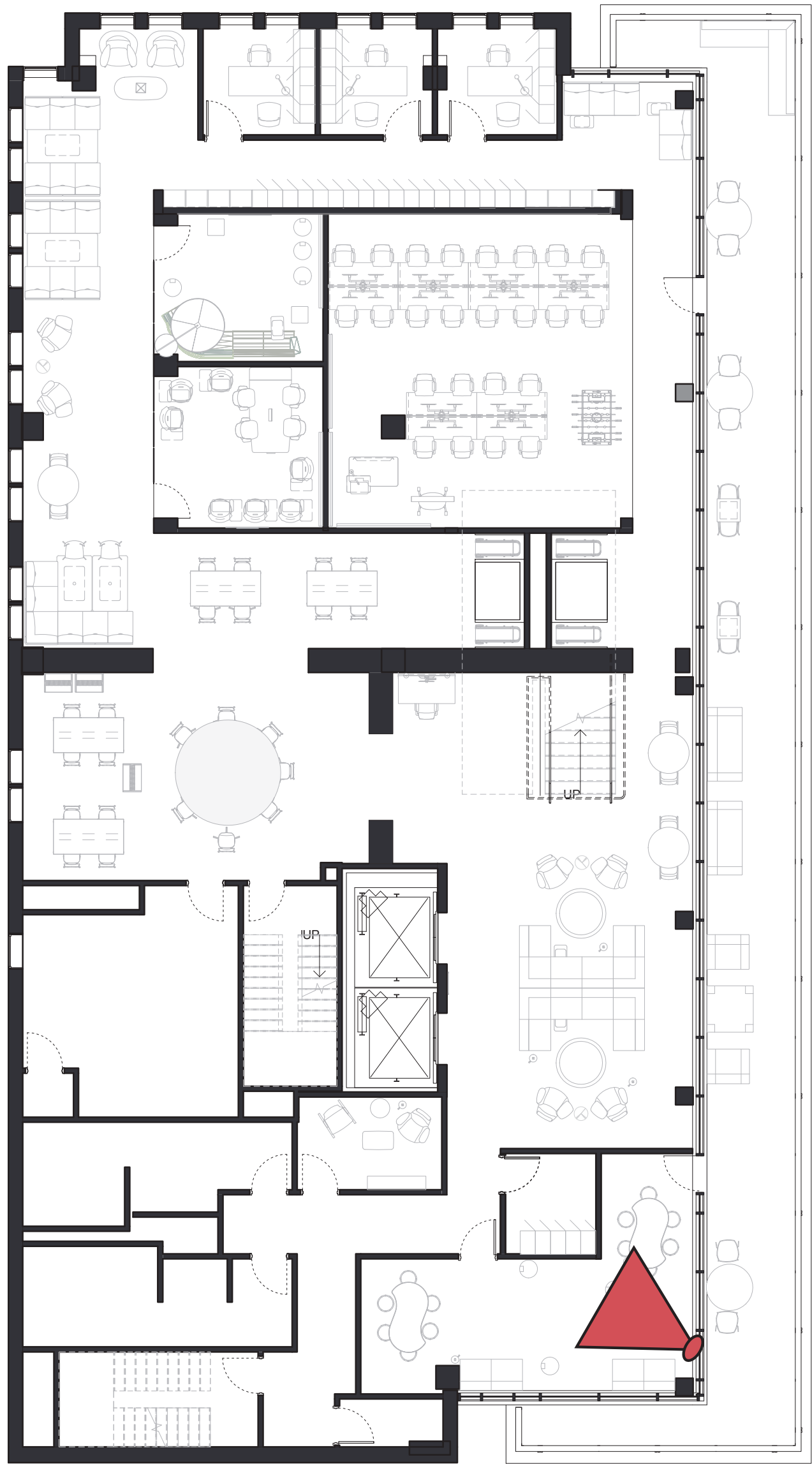


## 10TH FLOOR – FACULTY LOUNGE & SEMINAR ROOMS

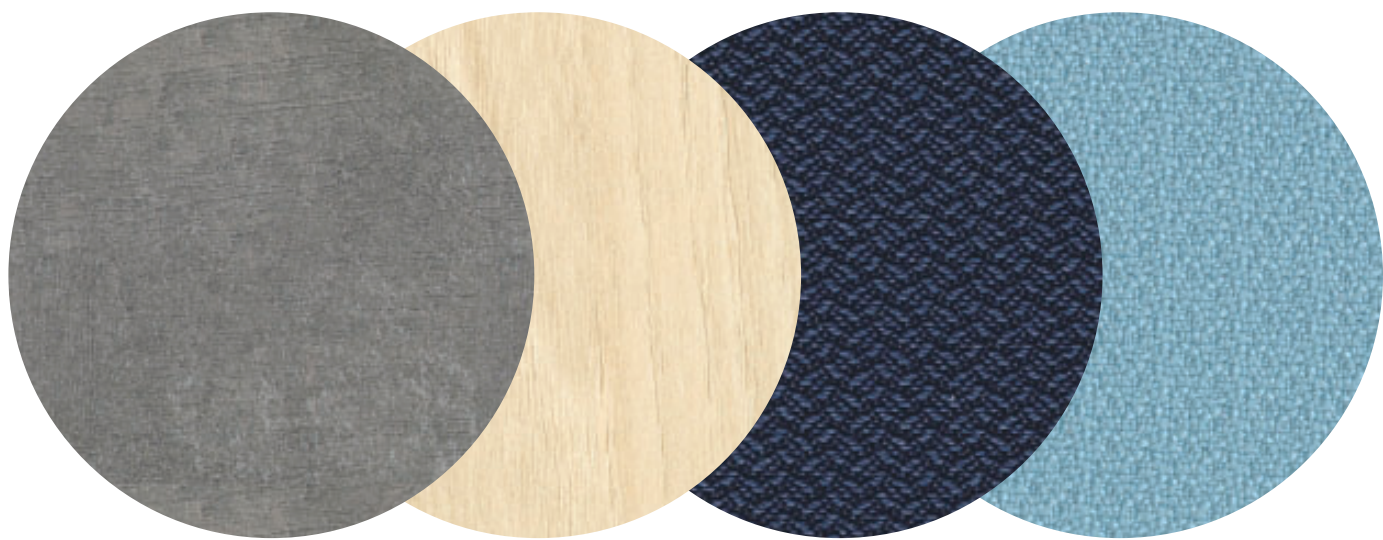








10th Floor

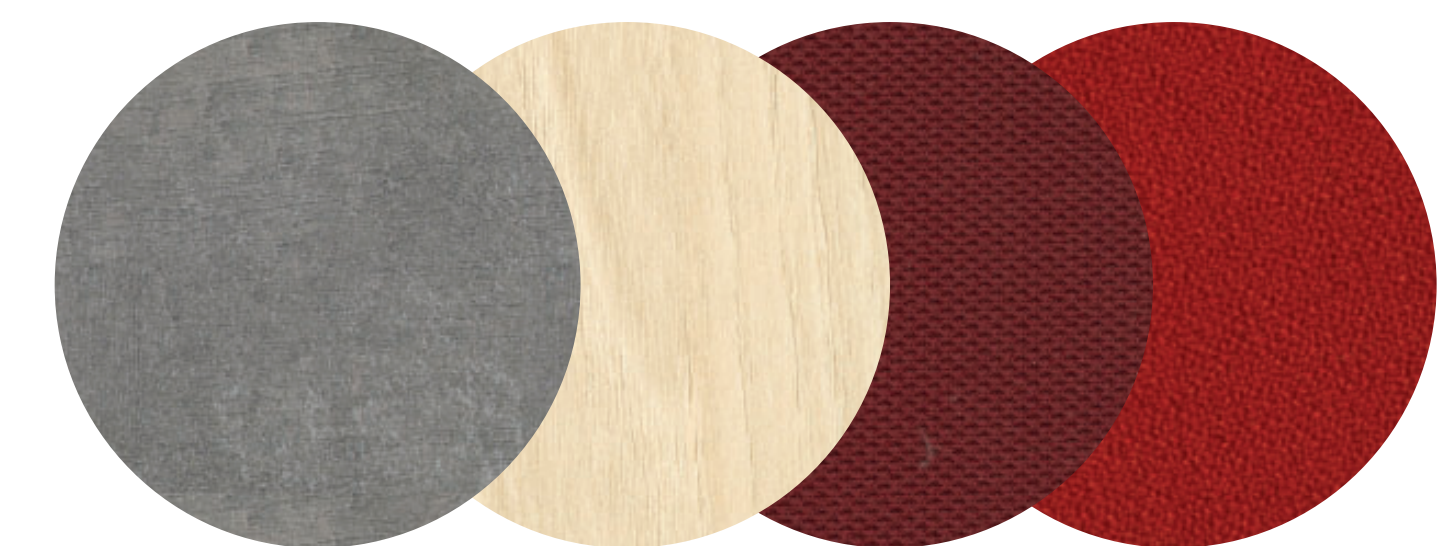


10TH FLOOR – DAYCARE CENTER



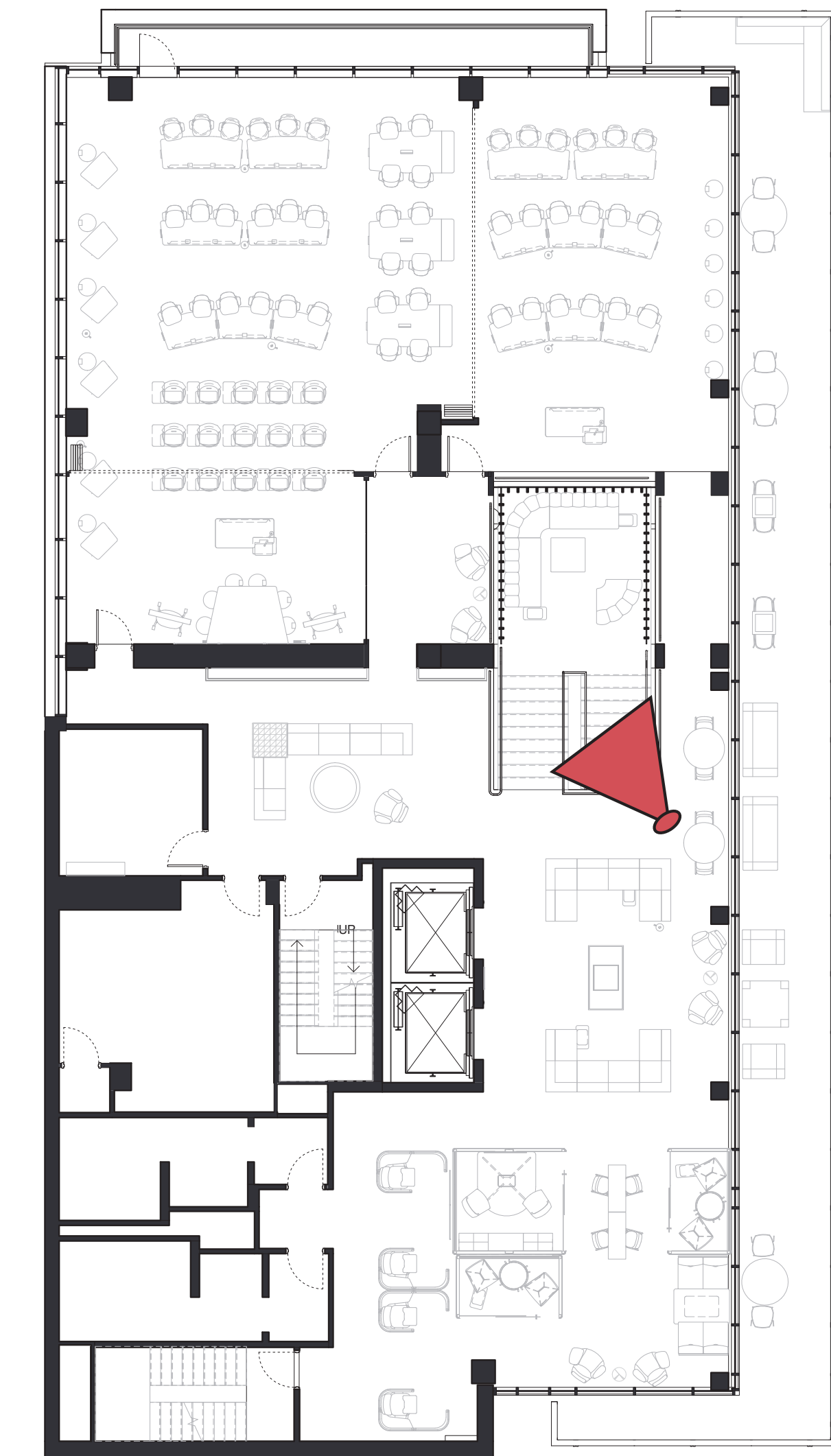


11th Floor

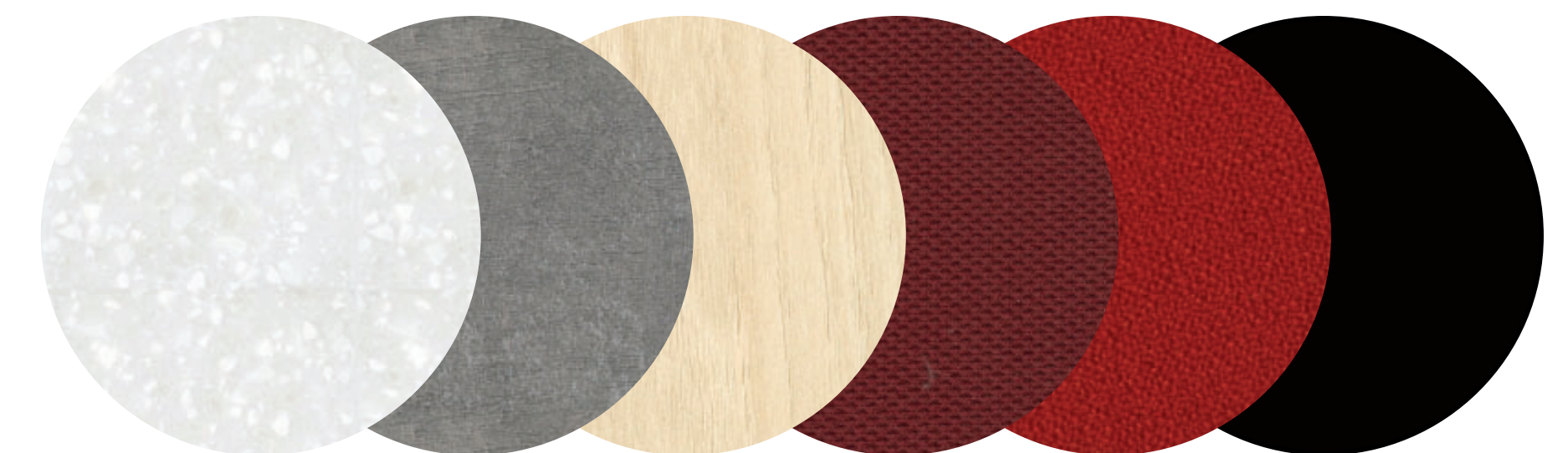
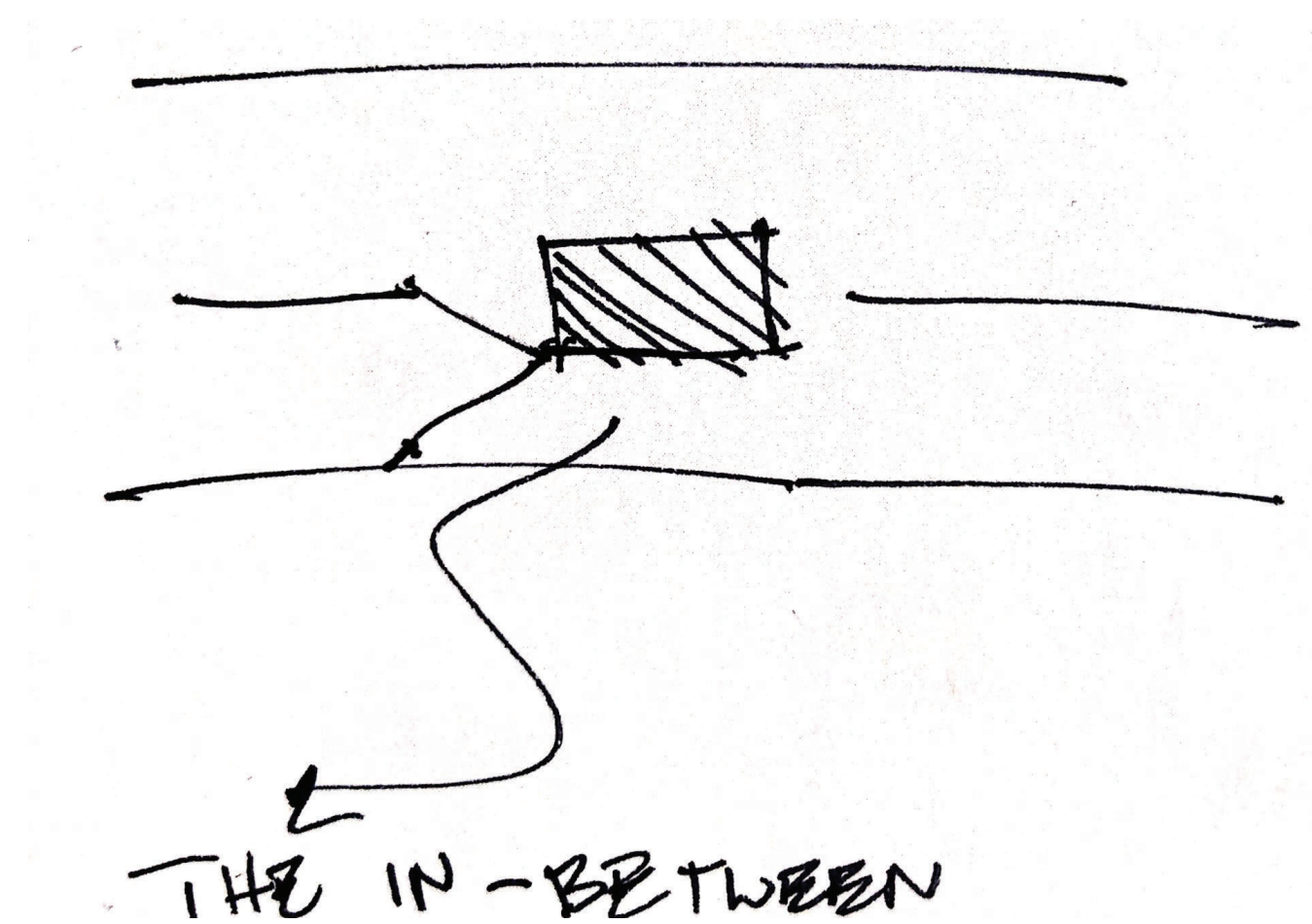


## 11TH FLOOR – LEARNING COMMONS LOBBY





11th Floor



## THE IN-BETWEEN STAIR







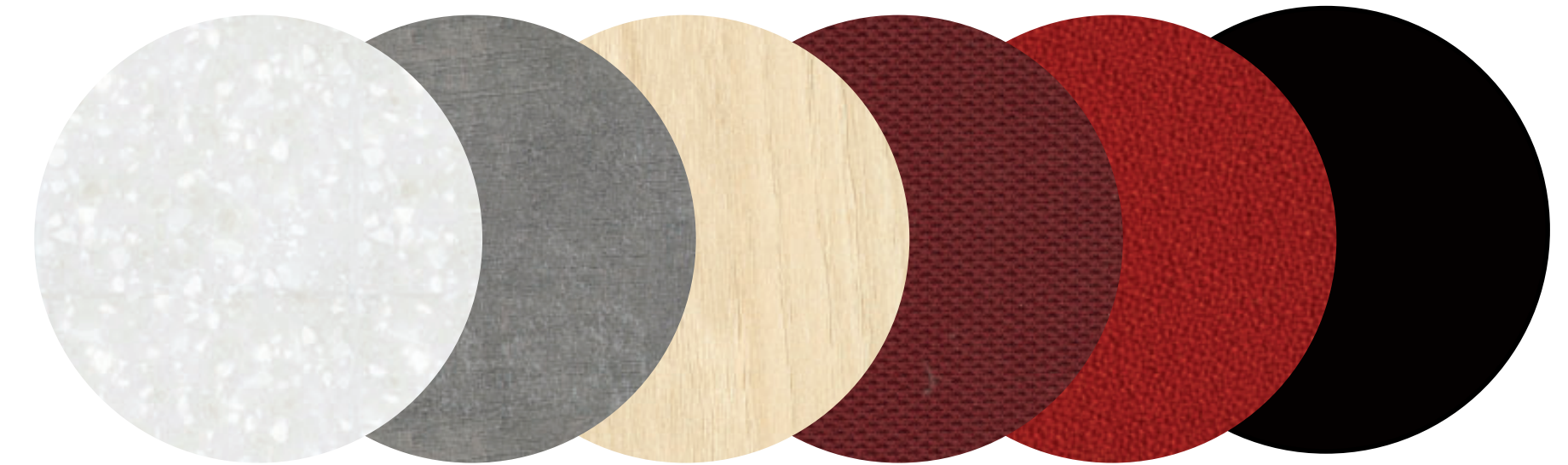


**SECTION WITH IN-BETWEEN LANDING**



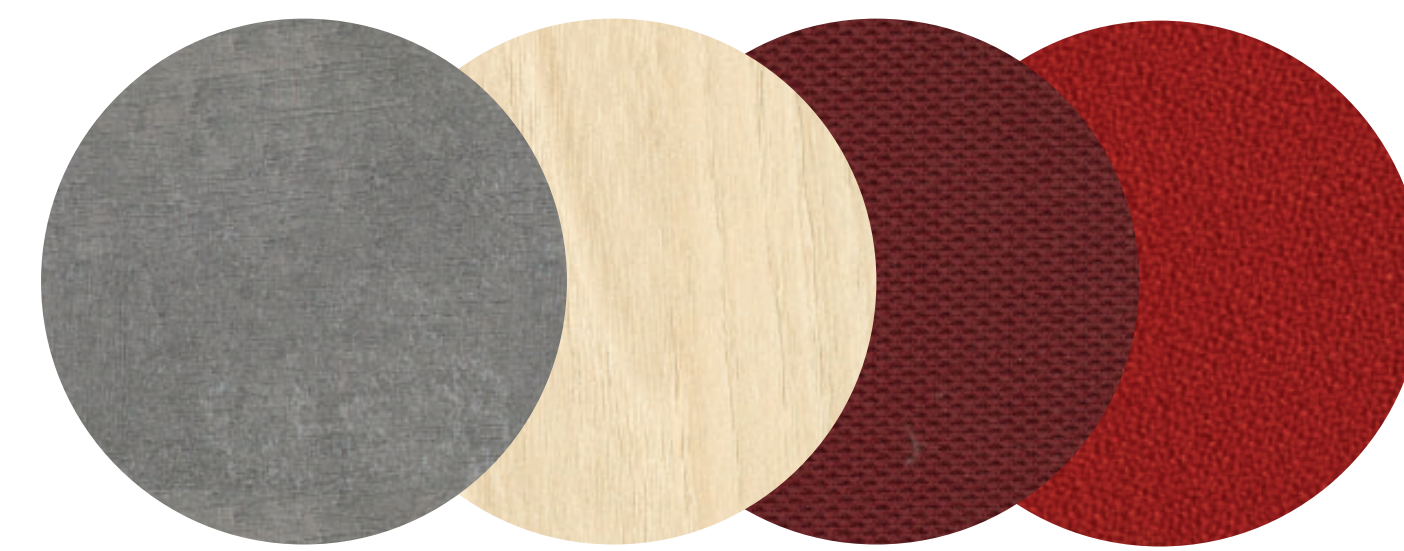


11th Floor



## 11TH FLOOR – THRESHOLD & LEARNING COMMONS

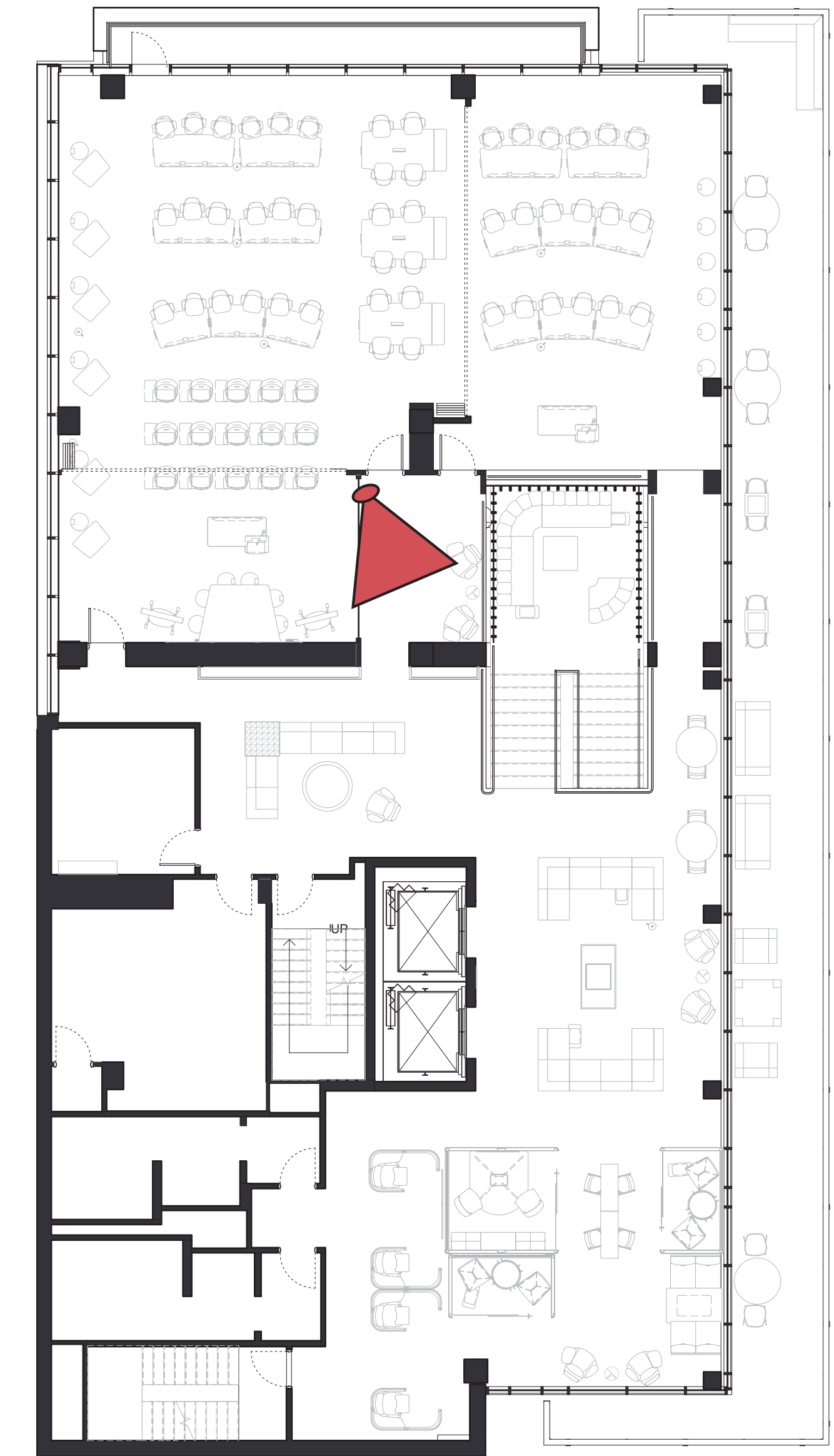




11th Floor

# LEARNING COMMONS ELEVATION



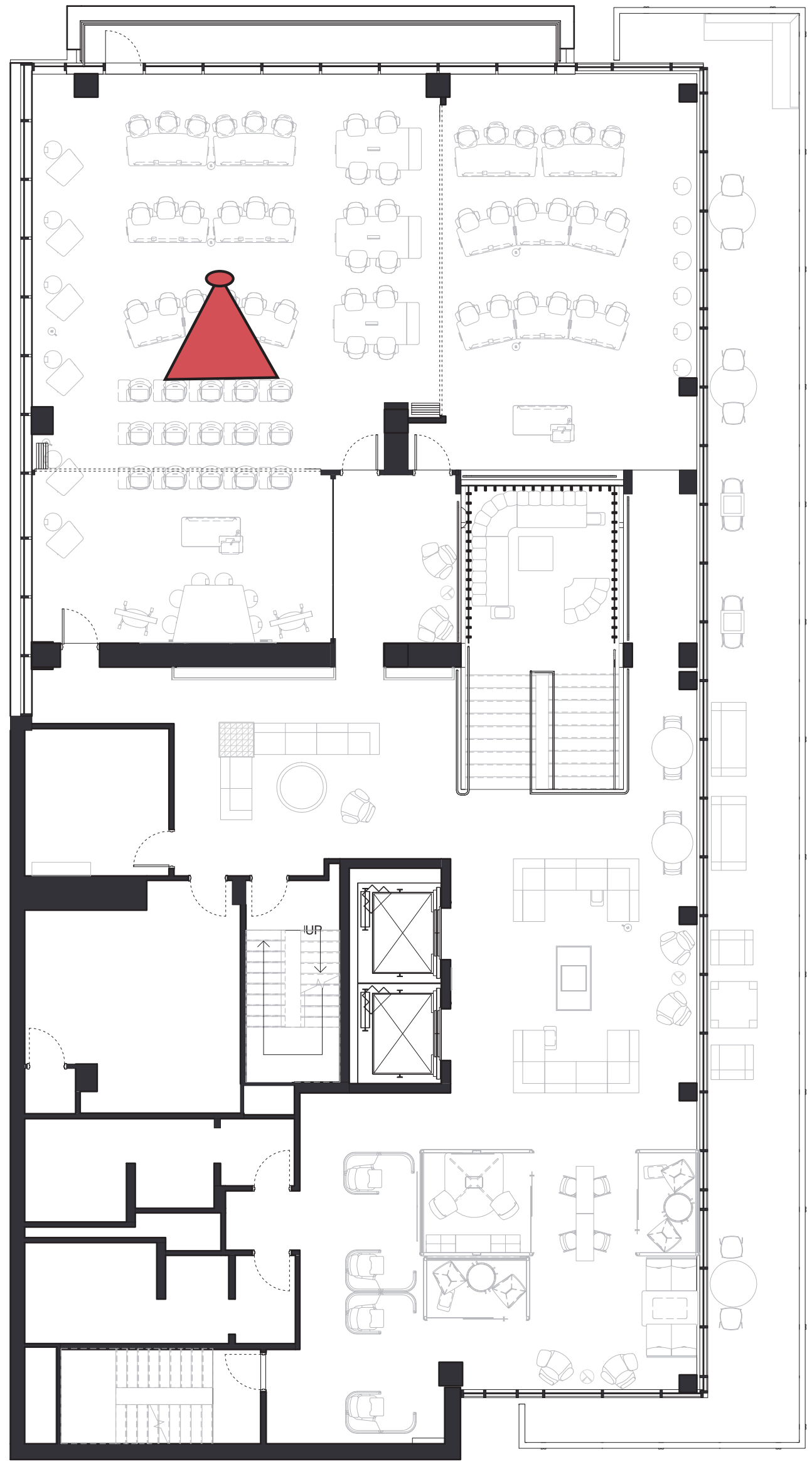


11th Floor

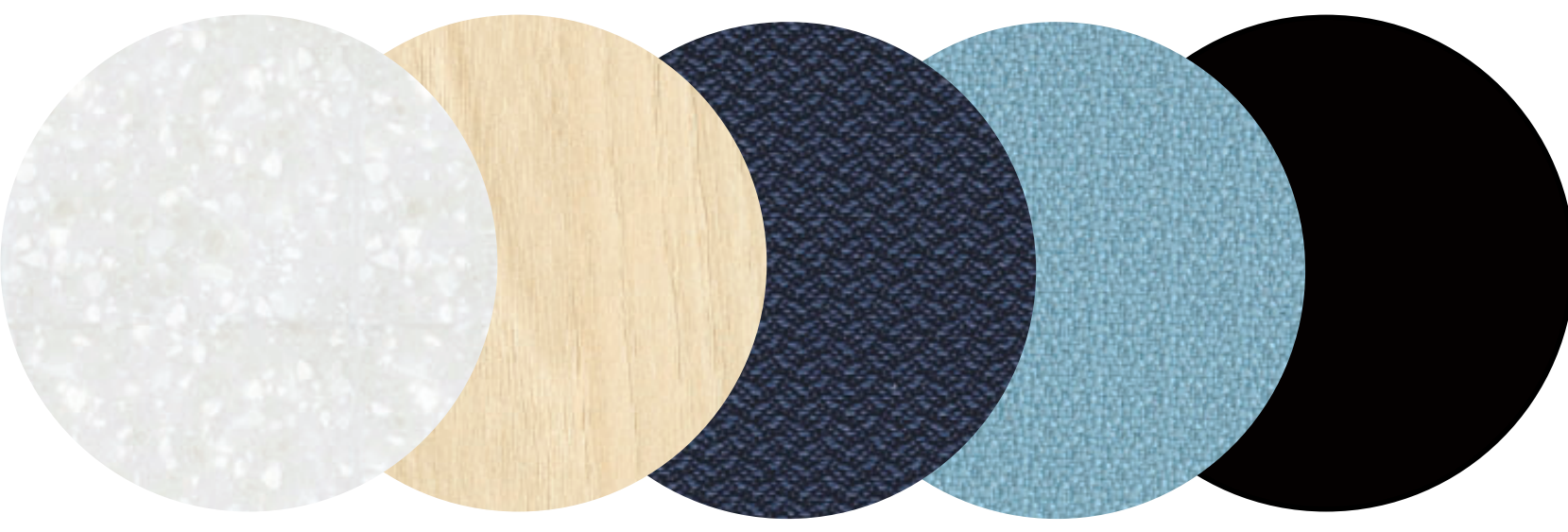


11TH FLOOR – EXITING CLASSROOMS





11th Floor

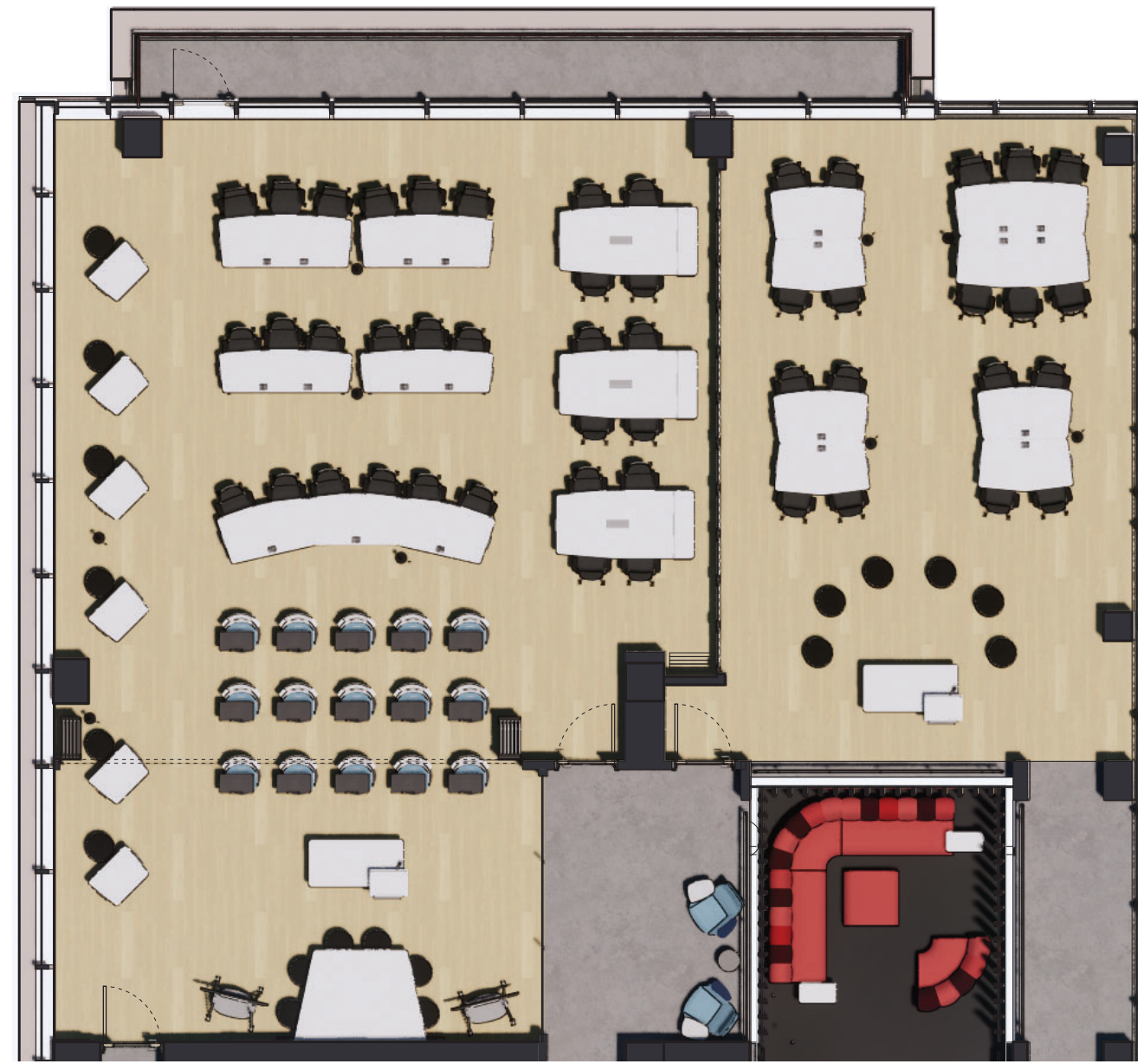


**11TH FLOOR – LARGE MULTI-PURPOSE CLASSROOM**

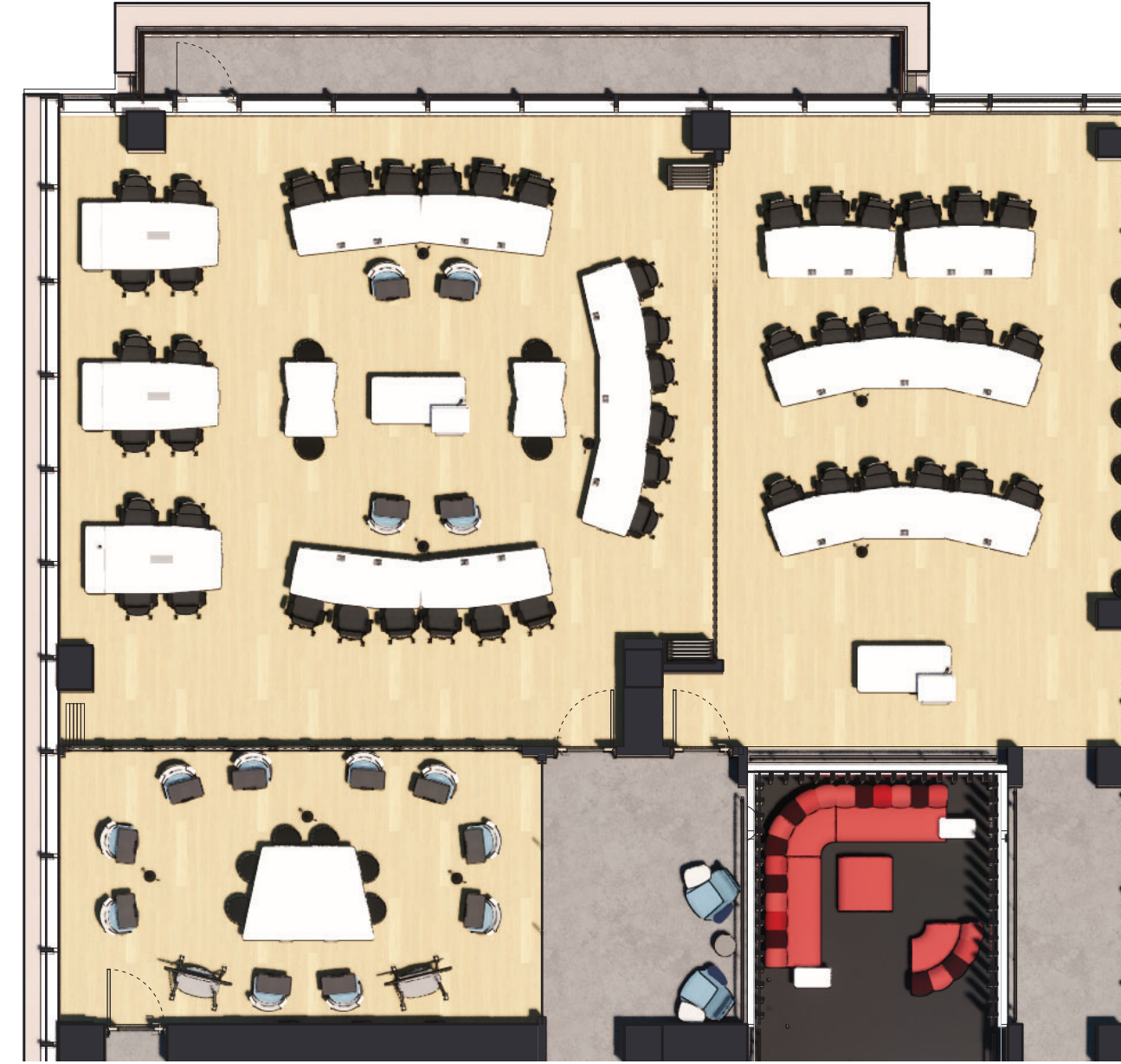




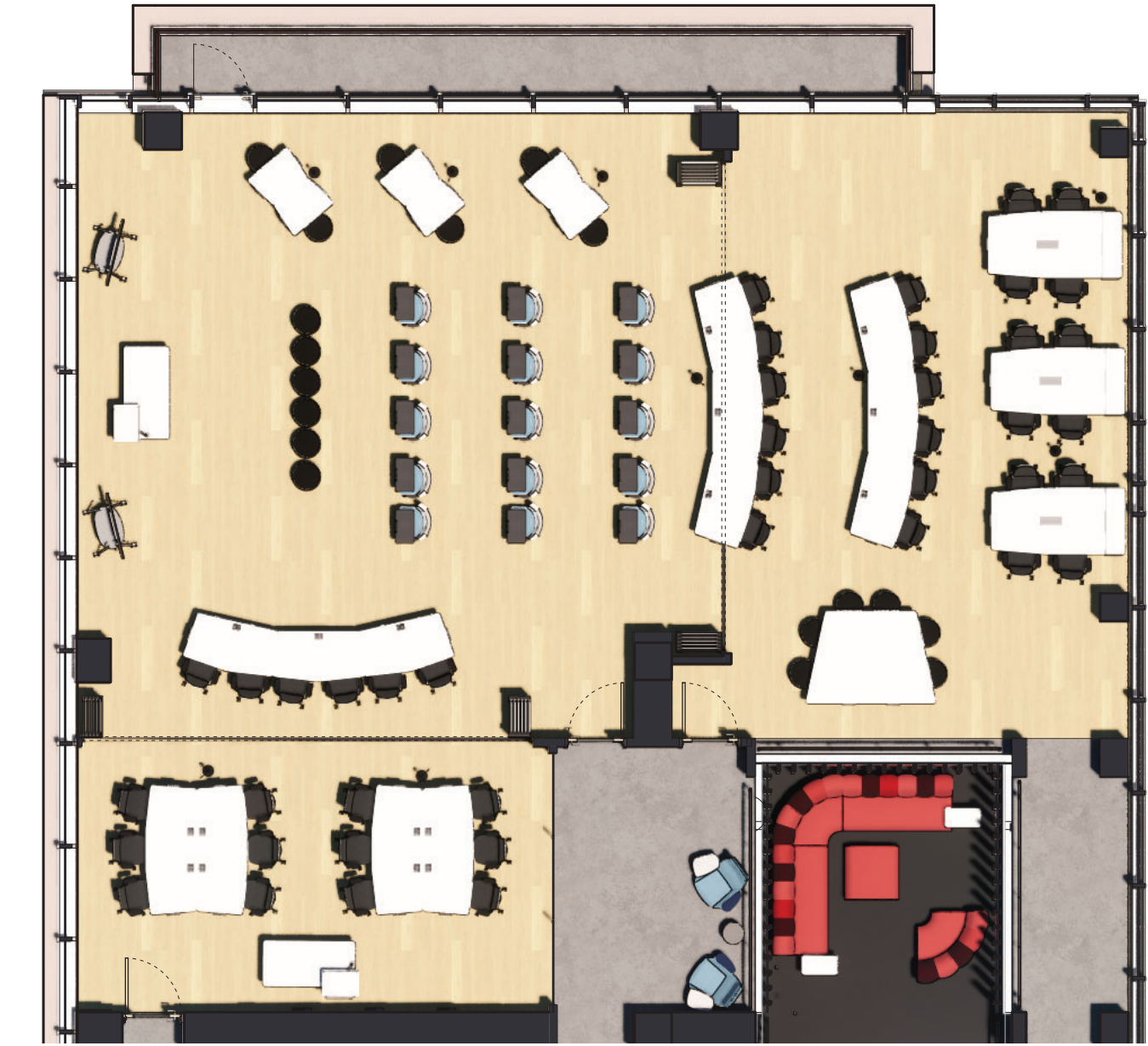




1.) One large, one small



2.) Three Small



3.) One Mega Large (or cleared out)

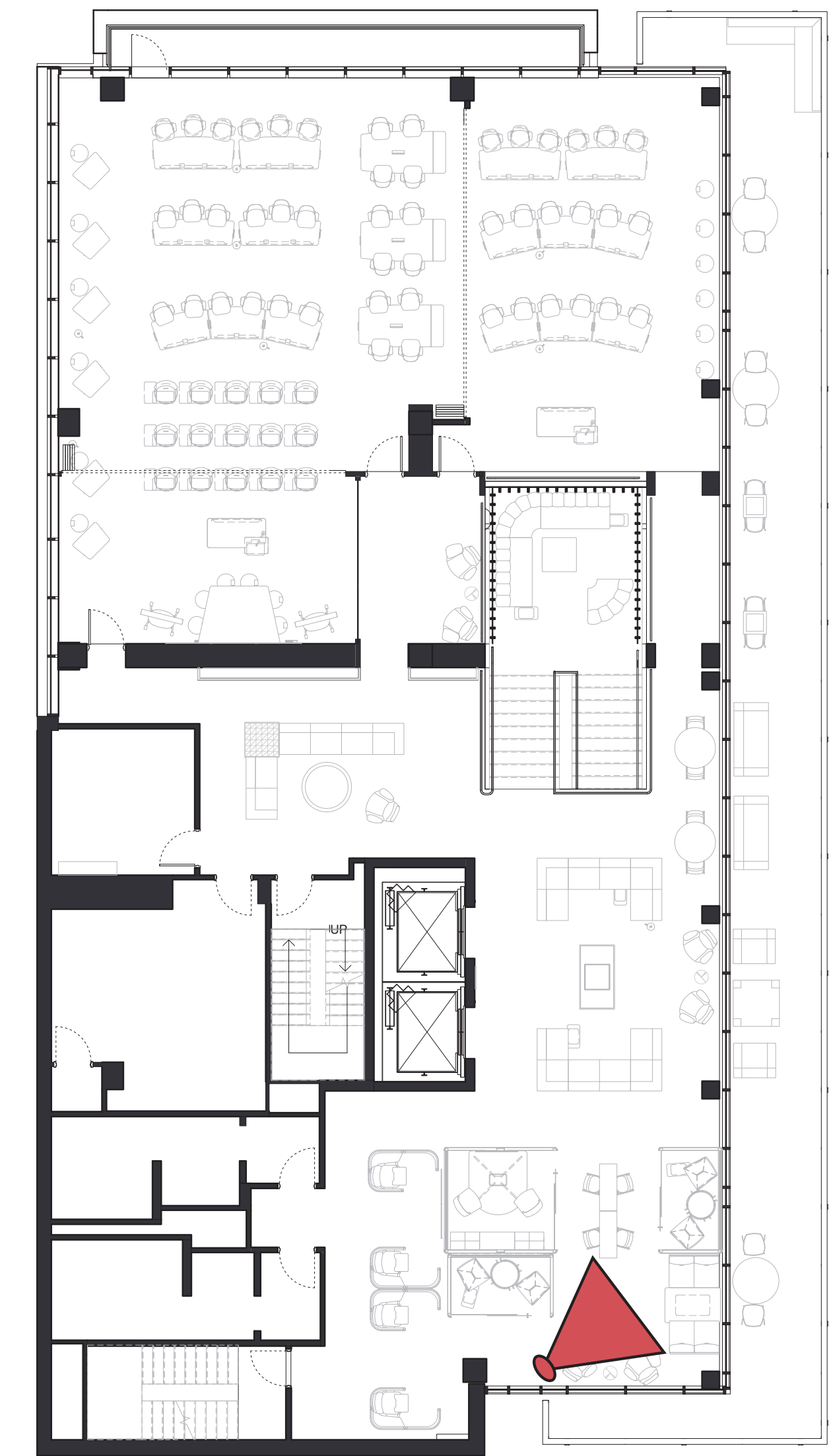
## ALTERNATIVE CLASSROOM FURNITURE ARRANGEMENTS



Shown: Three Small

## ACTIVE AND LARGE MULTI-PURPOSE CLASSROOM ELEVATIONS





11th Floor



## 11TH FLOOR – OPEN/CLOSED TUTORING CENTER











THANK YOU VERY MUCH

---

# THE NEXT HUB

---

QUESTIONS??