

**cobi** collaborative seating



# Steelcase



**Comfortable collaboration.**

There's no such thing as a quick meeting. We spend more time collaborating today than ever before. Squirming, fatigue, and loss of focus are unavoidable. Let's face it. Working with others requires a completely different set of postures, and thus, a completely different kind of chair. One that helps keep you comfortable and focused in collaborative settings like conference and training rooms.

**Introducing cobit™, part of our new category of collaborative seating. The cobit chair was designed specifically to foster collaboration and was based on three observations that generated our key insights:**

- 1. Chairs should promote movement and be comfortable for long periods of time.
- 2. Adjustments should be automatic and intuitive.
- 3. Chairs should support multiple postures.

**3 Key observations**

- 1. Collaboration takes time.
- 2. People don't adjust their chairs while collaborating.
- 3. People change postures when collaborating.



### Everything flexes.

Every part of *cobi* was designed to flex and adjust to your body. The chair's **top flexing edge** lets you comfortably rest your arm on top of the chair—you know, like you've tried to do on every chair you've ever sat in. The **flexing seat** encourages you to move and shift, allowing you to sit centered or off to the sides. And the **flexing back** contours to support any posture your body needs at any given moment.





### Automatic comfort.

Do you ever adjust your chair in conference rooms? Research says you don't. Maybe up or down, but chances are you sit down, and move into the first item of discussion on the meeting agenda.

The cobī chair offers **one manual adjustment** (seat height). The rest is taken care of for you. The **weight-activated mechanism** naturally puts you in the best position of comfort right from the start. When you first sit in cobī, it senses your center of gravity and adjusts to the position that will put the least amount of stress on your body, while still keeping you properly oriented and supported. When you shift or move, cobī does the same; allowing you to daydream in comfort.



Statement of Line



Chair: Arms  
Frame: **Black** 6205



Chair: Armless  
**Near Black** 6295



Chair: Arms  
**Platinum** 6249



Chair: Armless  
**White** 6009

Upholstery options



Standard Upholstery  
**Back:** Connect 3D Knit  
**Seat:** Cogent™: Connect



Sewn Upholstery  
Available on seat only.



Steelcase aspires to help people love how they work, by helping them create high performance workplaces. We study how work gets done and how great spaces can help. Those insights are embedded into every product and service we offer. Our furniture, interior architecture and technology solutions help organizations build their business, reflect their brand and support their culture. Our job is to make your job easier. Our passion is helping you Love How You Work®.

Global Dealer Network

We speak your language. Over 400 Steelcase dealers in North America, plus more than 500 Steelcase dealers internationally, help you create inspiring workspaces just about anywhere. Whether your project is across town, across the country, or across the ocean, our dealer network will coordinate the logistics so you don't have to. It's local expertise with a global reach.

Steelcase and Dealer Services

It's more than a product, it's a partnership. Our service offering includes workspace evaluations, space planning, project coordination, installation, maintenance, asset management, and much more. Tailored web-based solutions make it easy to purchase what you need and manage what you have. And financing alternatives provide flexible leasing options.

Cogent: Connect Color options

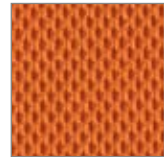
Color swatches shown may vary from actual colors. Please use actual surface material samples when specifying colors.



Coconut 5S15



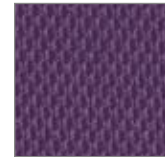
Turmeric 5S16



Tangerine 5S17



Scarlet 5S18



Concord 5S19



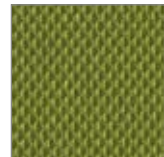
Maya Blue 5020



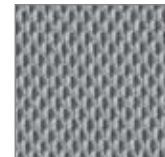
Blue Jay 5S21



Basil 5S22



Wasabi 5S23



Nickel 5S24



Graphite 5S25



Licorice 5026

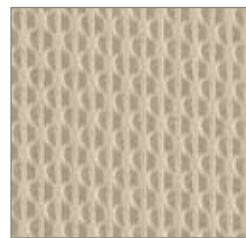


Malt 5S27



Root Beer 5S28

Connect 3D Knit



Color match available for all Cogent: Connect color options

Dimensions and range of adjustability:

Seat Depth	19"
Seat Width	18.75"
Seat Height from Floor	15.5" to 20.5"
Back Height from Seat	19.5"
Width between Arms	19"
Arm Height from Seat	9"
Stool Height	40" to 50"

The cobii chair was designed by the Steelcase Design Studio in collaboration with Luke Pearson of PearsonLloyd.



The cobii chair has **Indoor Advantage certification** from Scientific Certification Systems as being a low emitting product. **Cradle to Cradle™ Certification** requirements are in process.

When your cobii chair is no longer useful to you, the **Steelcase Environmental Partnership** program will help you responsibly take it to the next phase in its Life Cycle—be it resale, refurbishing, charitable donation or recycling.

Visit [steelcase.com](http://steelcase.com) for complete information regarding recyclable content and Life Cycle Assessment.

Love how you work.®

**Steelcase®**

Call 800.333.9939 or visit [steelcase.com](http://steelcase.com)

Item #: 09-000049 1/09 ©2009 Steelcase Inc. All rights reserved. All specifications subject to change without notice. Printed in U.S.A. *cobi* is the one thing in your meetings that will actually do what you ask it to.