

**NEXT**

# INTERCONNECTED WORKPLACE

## OPTIMIZE EVERY SQUARE FOOT

- Design settings for multiple functions.
- Consider alternative workplace strategies.

## ENHANCE COLLABORATION

- Support both physical and virtual collaboration.
- Allow for transparency which builds trust – the heart of collaboration.

## ATTRACT, DEVELOP, AND ENGAGE

- Provide choice and control over where and how people work.

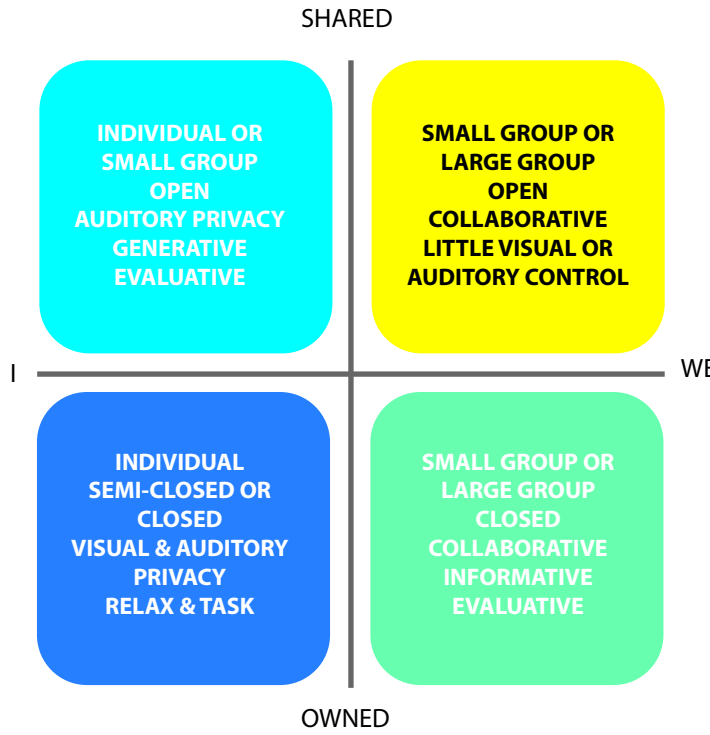
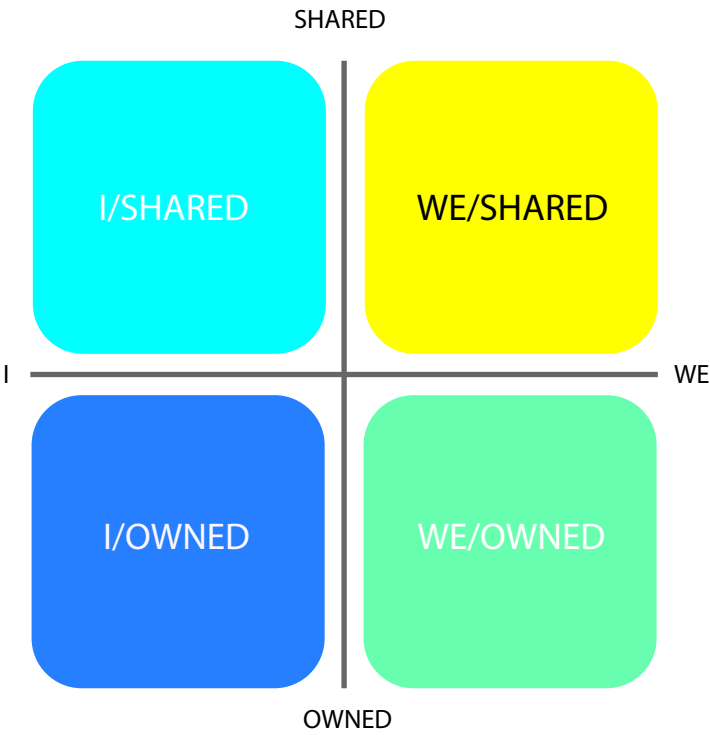
## BUILD THE COMPANY BRAND

- Create spaces that communicate your brand to both internal and external audiences.

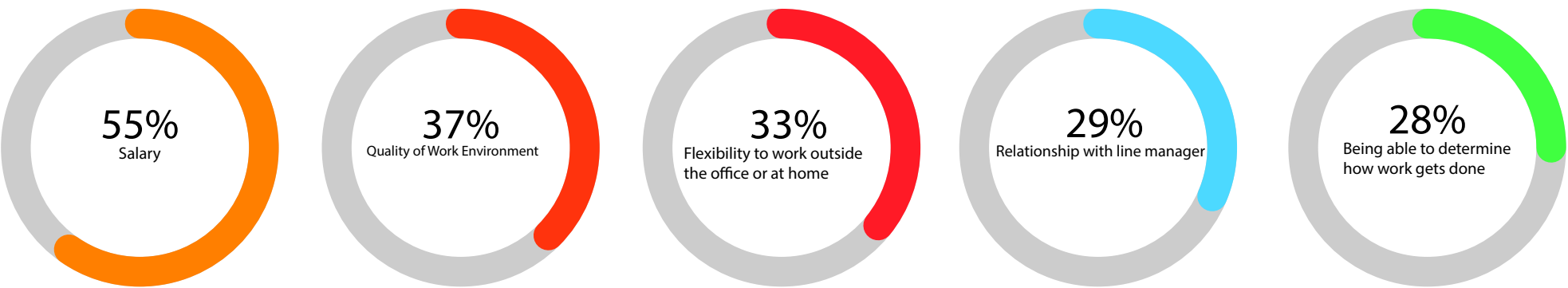
## HELP IMPROVE

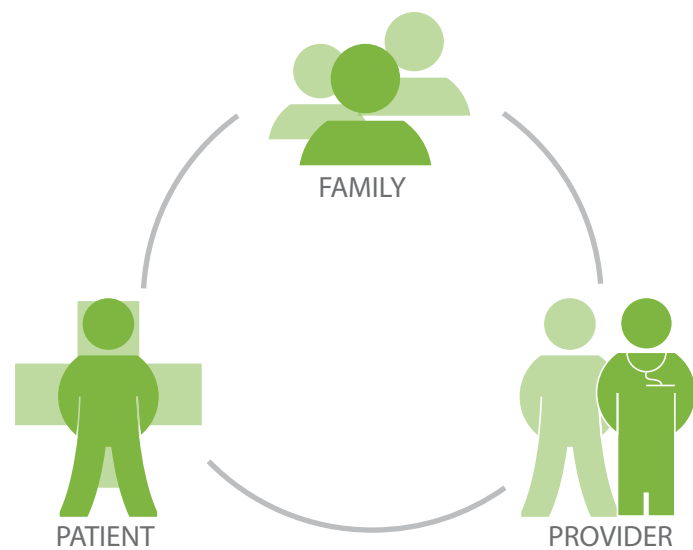
- A person's wellbeing

## A Palette of Places



## Top 5 Factors Determining Job Satisfaction

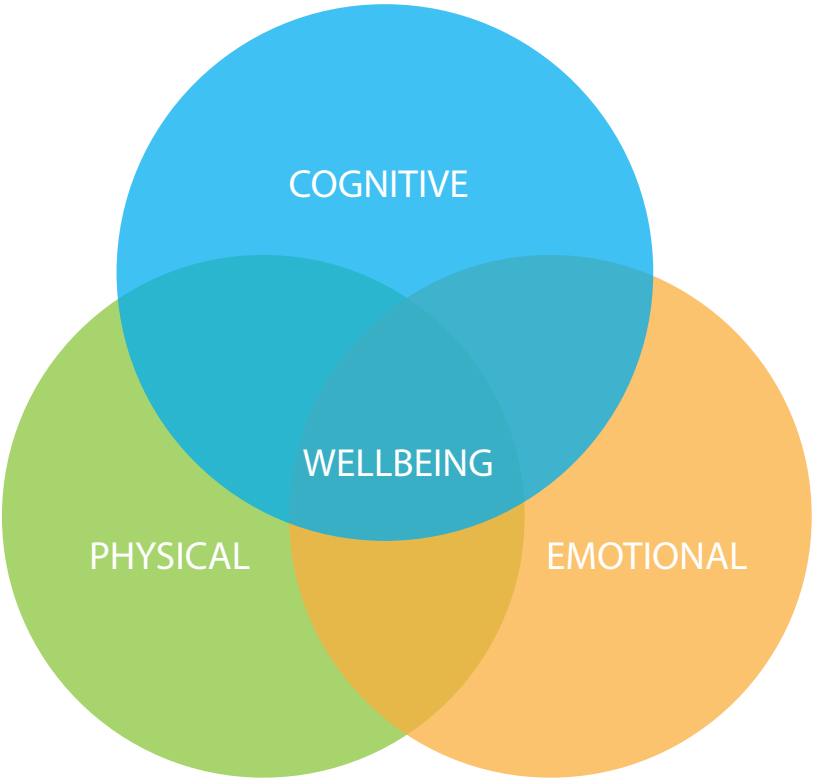




Enhance people's connections, wellbeing and safety by designing for the human factor.



Increasingly, patient rooms are more than just a place for a bed and medical equipment. They are multifunctional environments—a temporary home for a healing patient and family members, a destination for visitors, and a workspace for clinical team members who need easy access to deliver care. When hosting, comfort and communication are integrated throughout safe and efficient patient room design, a better and safer experience of care can be anticipated.



# SITE LOCATION

- 5601 6th Ave South (4th Floor)  
Seattle, Washington 98108
- Located in Seattle's vibrant Georgetown neighborhood



View of building exterior



Views of downtown Seattle and Mt. Rainier



View of building interior



## LEGEND



EATS & DRINKS



BUS STOP



EGRESS



INGRESS

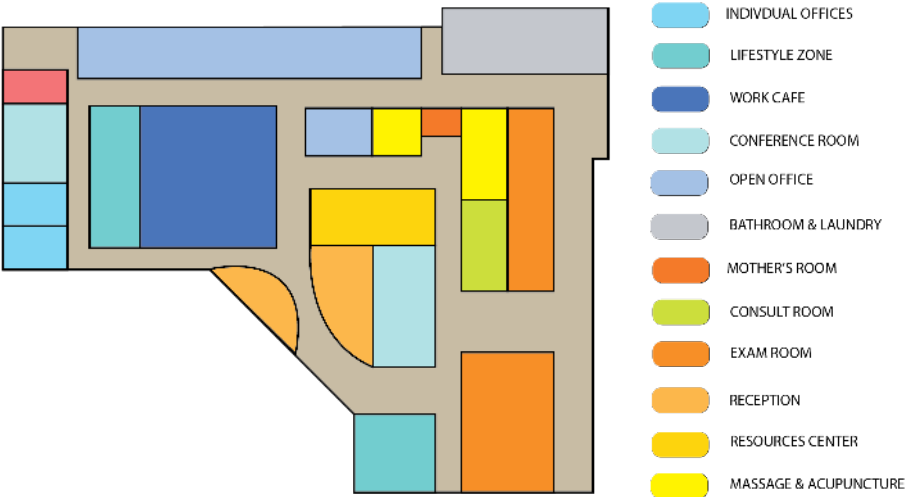
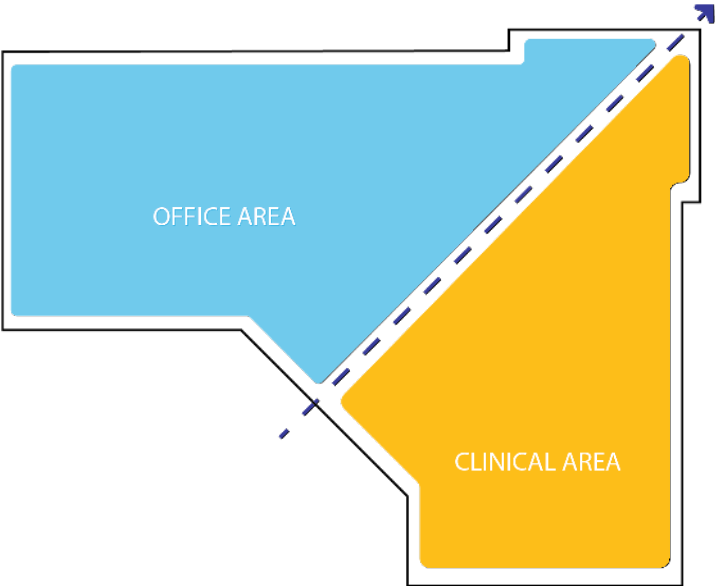
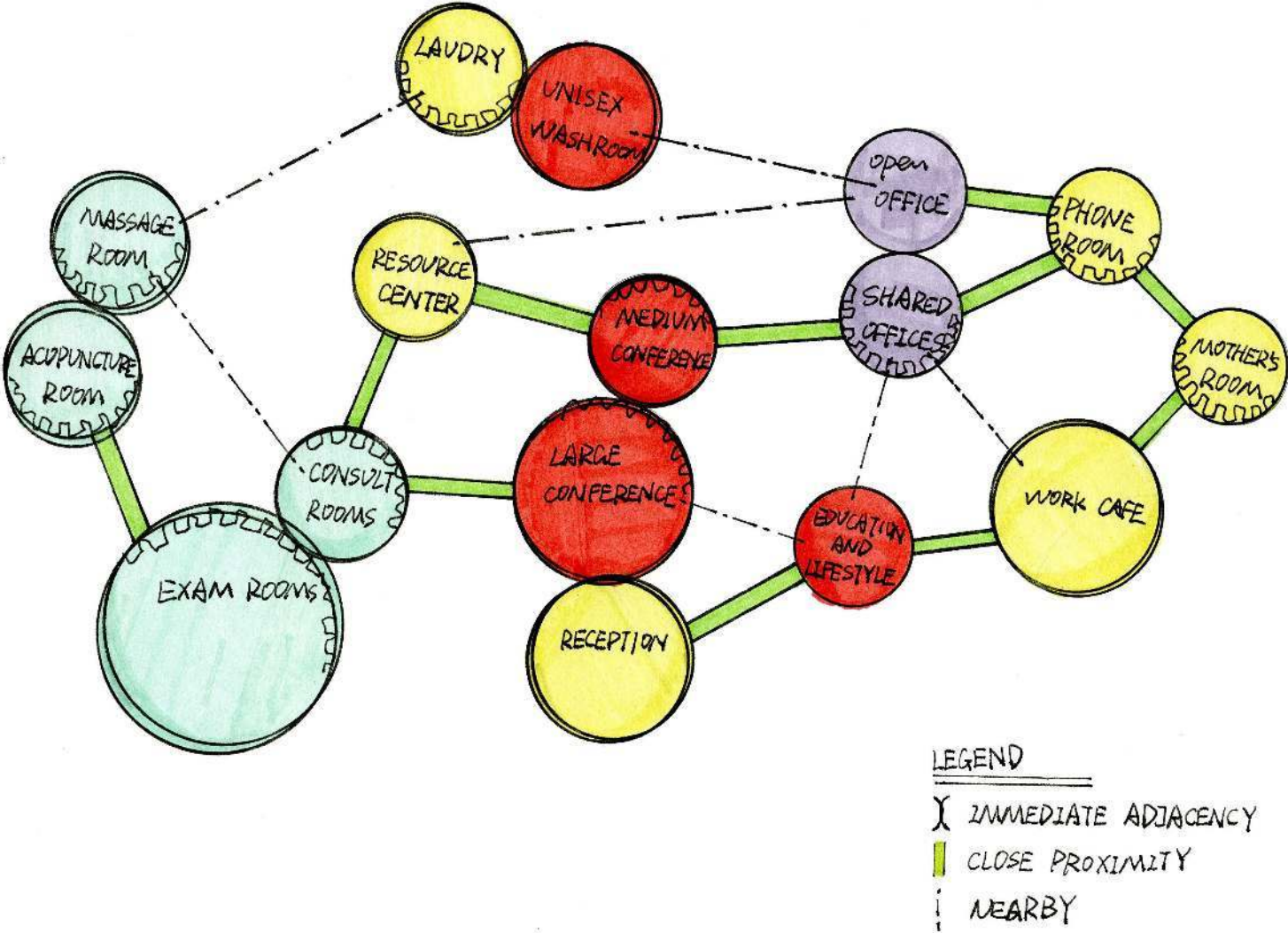


# BLOCKING DIAGRAM

Based on Steelcase research dealing with interconnected workplace and clinical spaces adjacency and blocking diagram was created.

To create **interconnected workplace** by providing a range setting for multiple functions, give employees choices and control over where and how they work. Create a place for people to gather, or get way.

The **clinical spaces** that focus on improving the experience for all participants. Providing a range of private and semiprivate spaces to give them choices and control of their environment. Keep exam rooms away from office area, to enhance their privacy and communication. Glasses door maintaining visibility to the patient without disturbing them, and receive most sunlight.



## DESIGN PRINCIPLE

*“ That oblique and elliptic lines are dynamic, and by their very nature posses an emotive power a thousand times stronger than perpendiculars.”*

Antonio Sant'Elia  
Key member of Futurism Movement

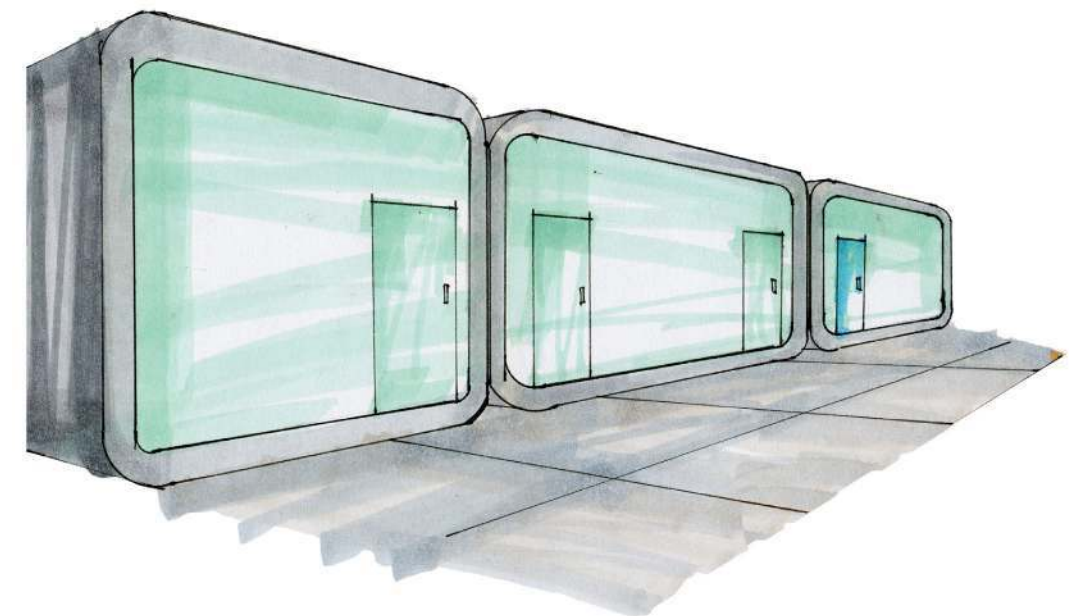
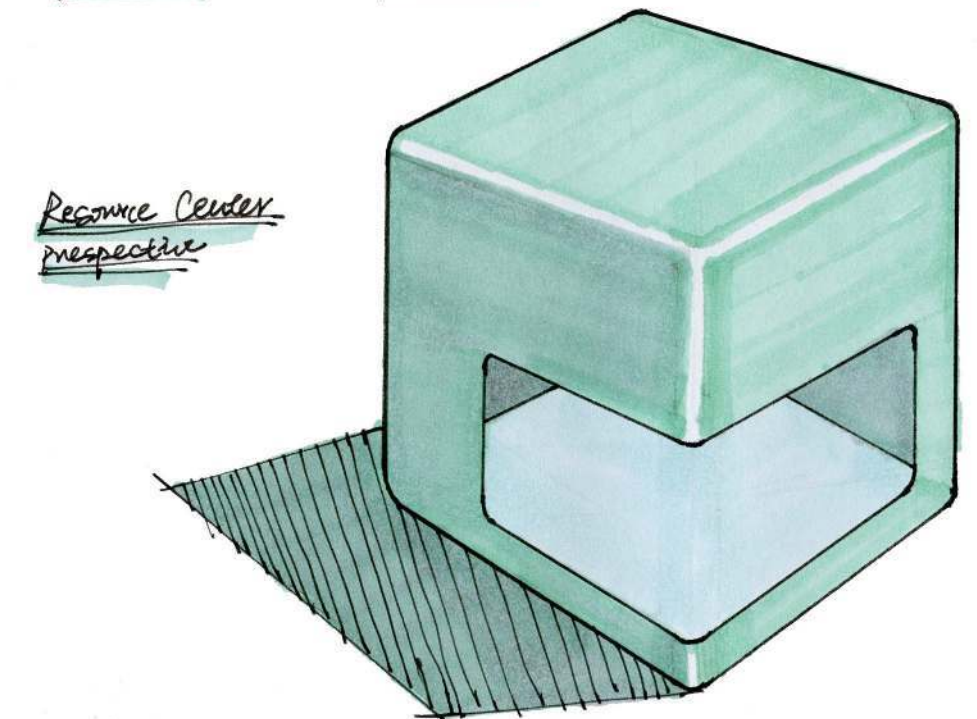
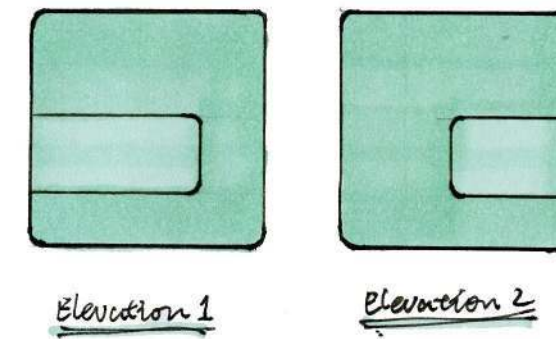
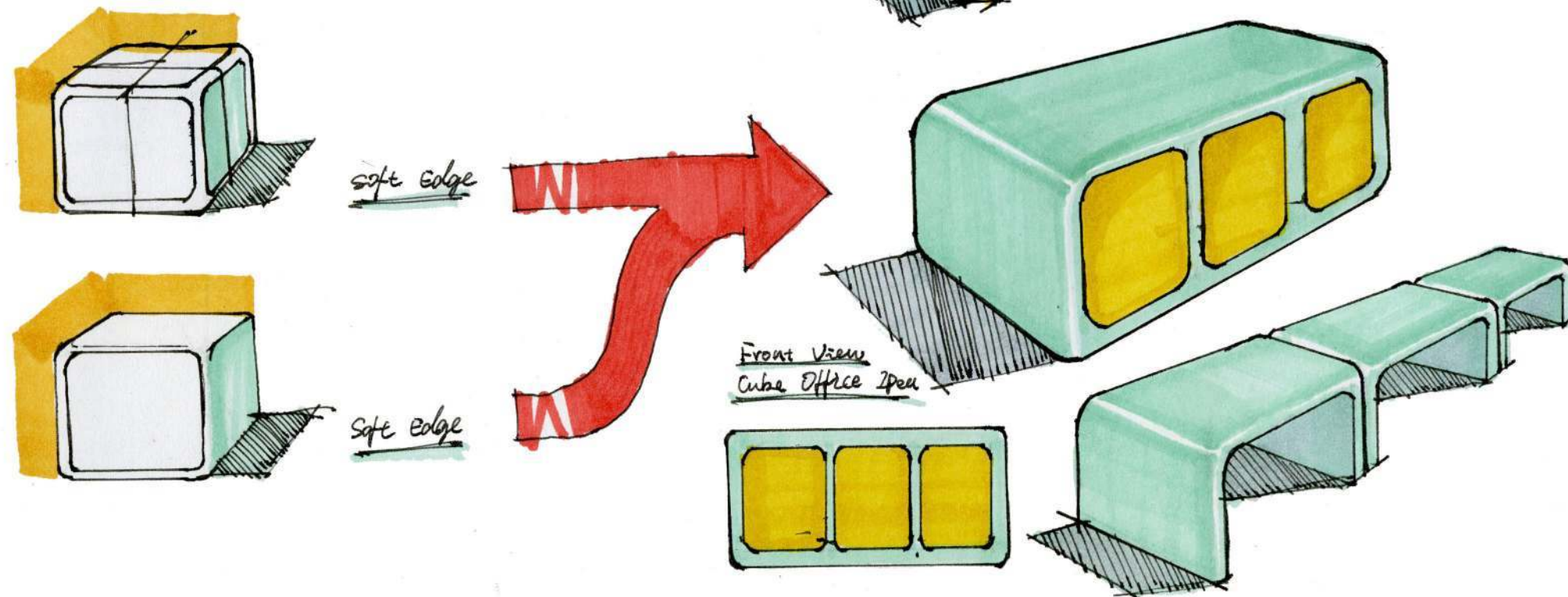
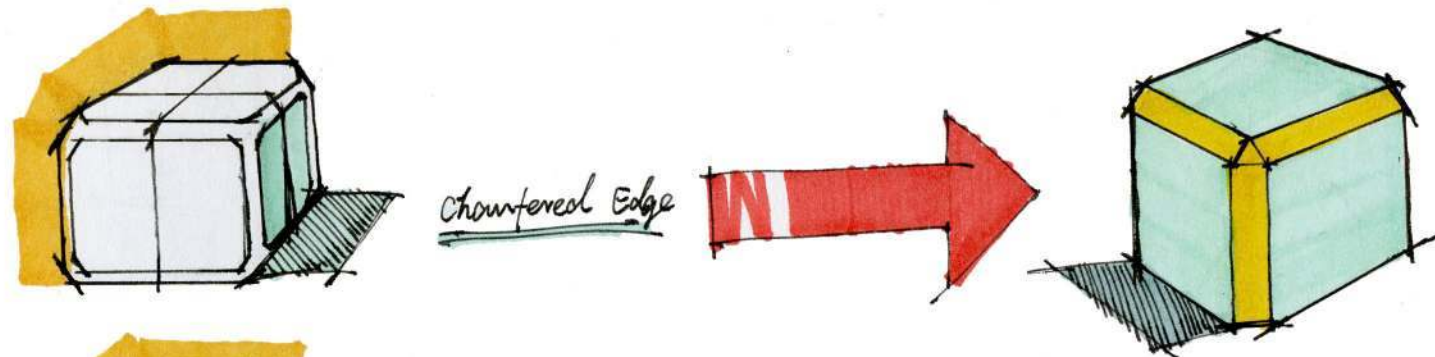
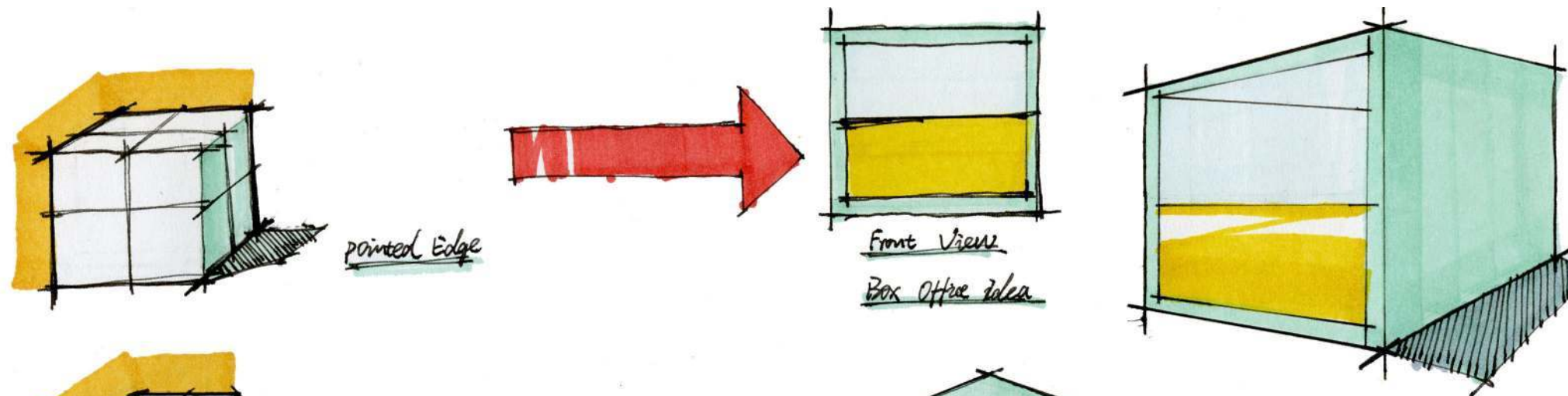
Today's health care facility is integrated one for patients, for their family members and doctors. The design focus is on efficiency, comfort and safety, space that is used to humanize for good heath connection between patients and doctors.

The **design concept**: using geometry, circulation to promote an atmosphere of flexible, comfort and relaxation. Cleanliness, freshness and simplicity to create a calm environment. The function of space influences the final form.





# CONCEPT DEVELOPMENT SKETCHES





## **FINISHES COLLECTION - SEATING**

Steelcase Products

### **PURPOSEFUL**

- Calming, recharge for patients
- Energizing, engaging for collaborating

### **DURABLE**

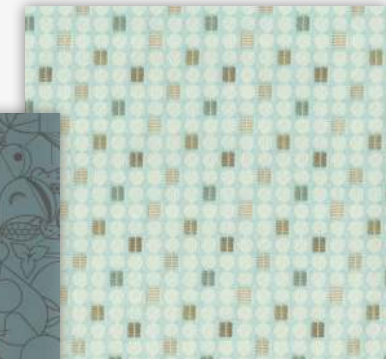
- Easy to maintain
- Superior abrasion resistance

### **SUSTAINABLE**

- STAND IN is PVC free
- 100% water-based polyurethane



**Olympus**



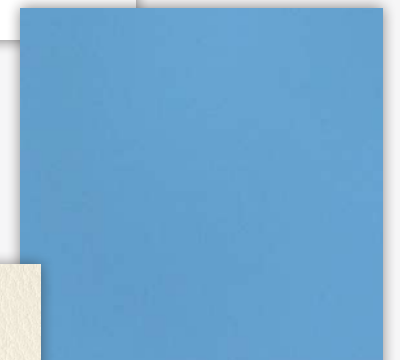
**Dot to Dot**



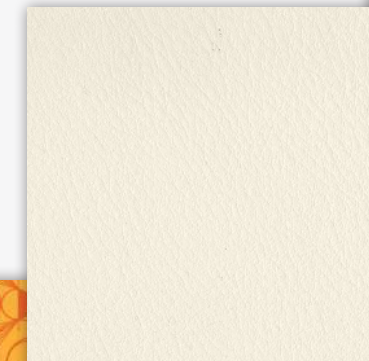
**Beguiled by the Wild**



**Cirque**



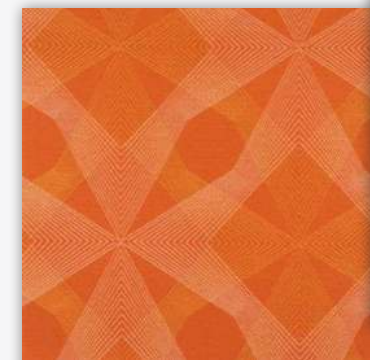
**Silica**



**STAND IN: POWDER**



**Beguiled by the Wild**



**Echo (Arc-Com)**



**STAND IN: TUSK**



WORK AREA FLOOR MATERIALS - CARPET TILE



MOHAWK GROUP  
Orange Sea - 952

MOHAWK GROUP  
Felt Finish - 975

MOHAWK GROUP  
Silva - 945



MOHAWK GROUP  
Frosted Shield - 937

MOHAWK GROUP  
Silva - 945

MOHAWK GROUP  
Cool - 149

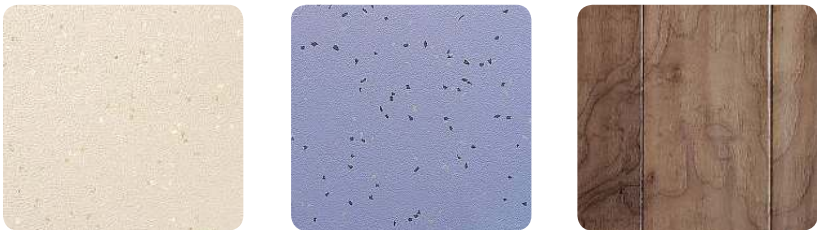
CLINICAL AREA FLOOR MATERIALS - RUBBER TILE



MOHAWK GROUP  
Desert Daystar - 514

MOHAWK GROUP  
Smoky Branch - 532  
Floor Insert

MOHAWK GROUP  
Burnished Cinnamon - 544



MOHAWK GROUP  
Tawny Pearl - 504

MOHAWK GROUP  
Gobi Lilac - 550

MOHAWK GROUP  
Wood Tile

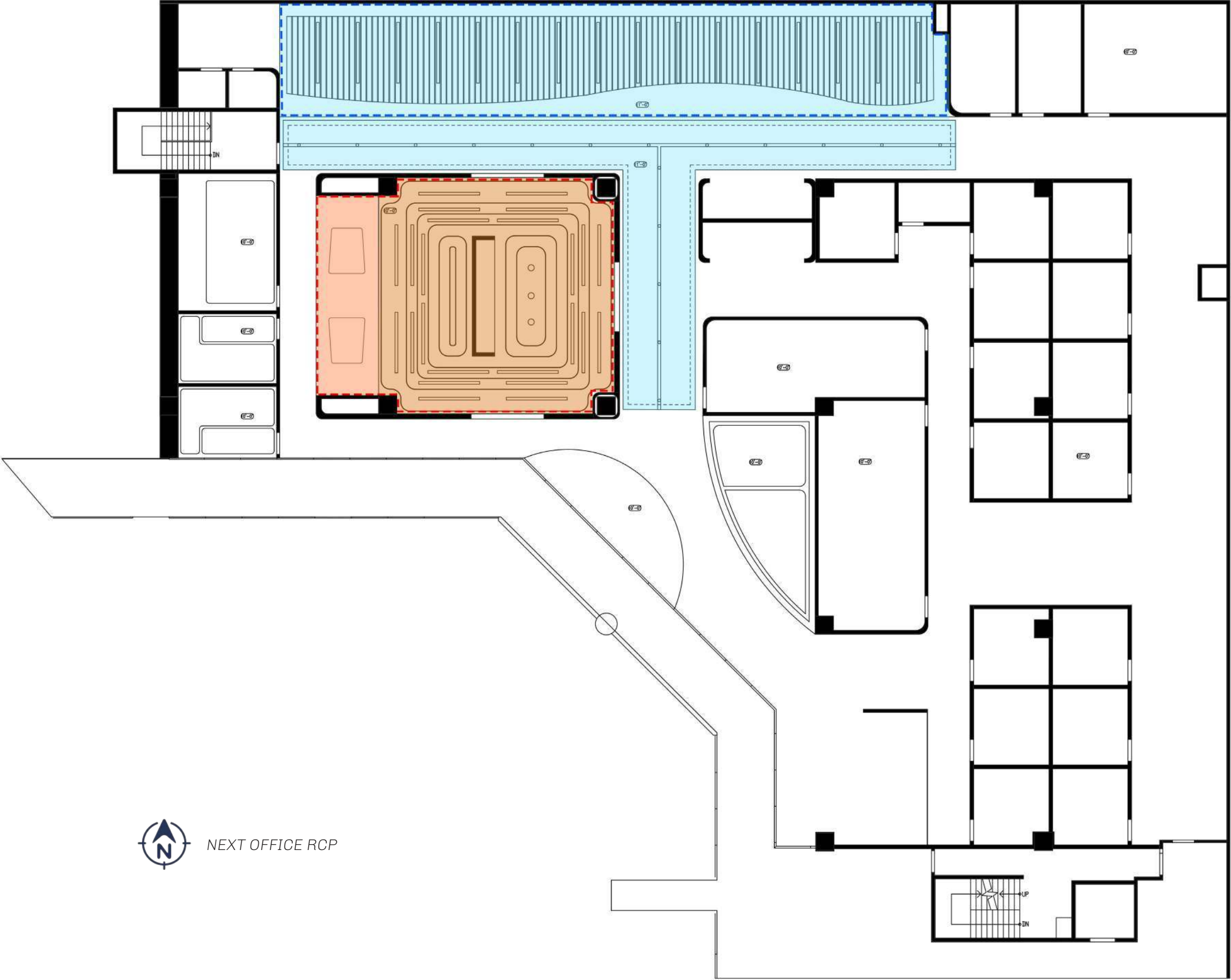
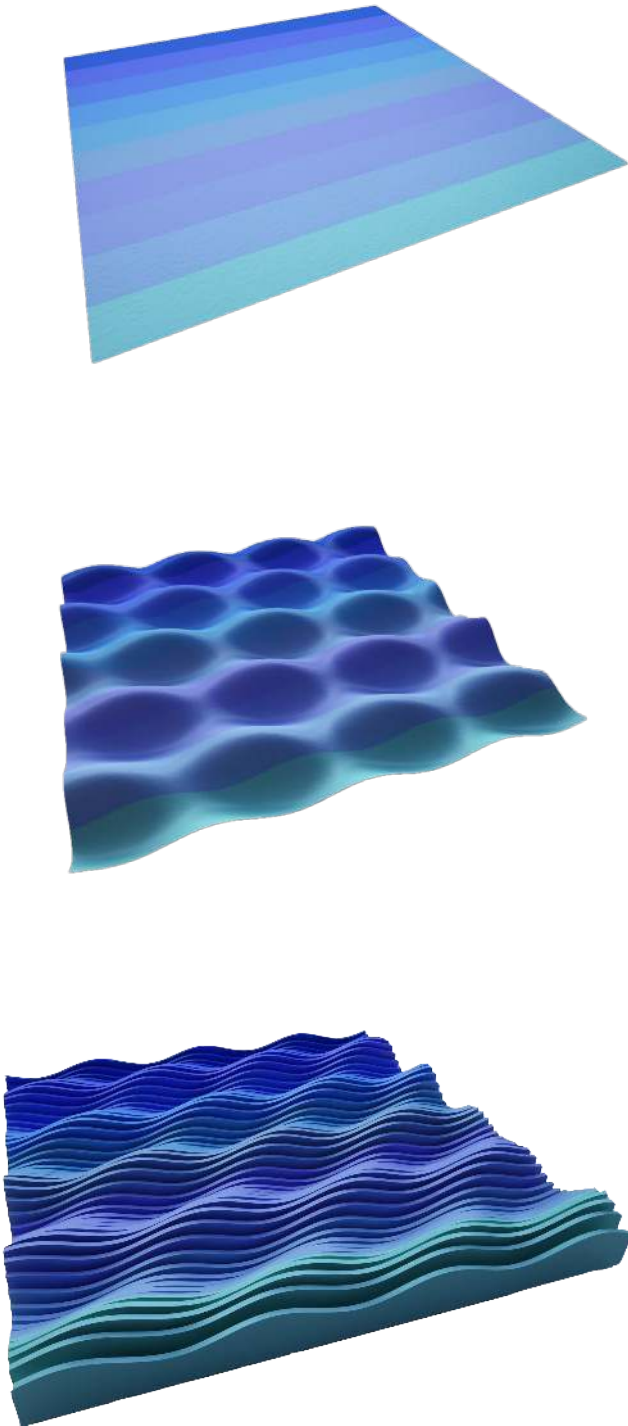


ROOM NUMBER


- 1 RECEPTION/WAITING 2 RESOURCE CENTER/MEDICAL SUPPLY 3 LARGE CONFERENCE 4 EDUCATION AND LIFESTYLE ZONE 5-14 EXAM ROOMS 15-16 CONSULT ROOMS  
17-18 MASSAGE ROOMS 19 MOTHER'S ROOM/RELAXATION ROOM 20 ACUPUNCTURE ROOM 21 WORK AREA 22 LAUNDRY/ENVIRONMENTAL SPACE 23-24 UNISEX WASHROOMS  
25 OPEN OFFICE/INDIVIDUAL WORK AREAS 26-27 PHONE/QUIET ROOMS 28 MEDIUM CONFERENCE 29-30 SHARED OFFICES 31 WORKCAFE EDUCATION AND LIFESTYLE ZONE



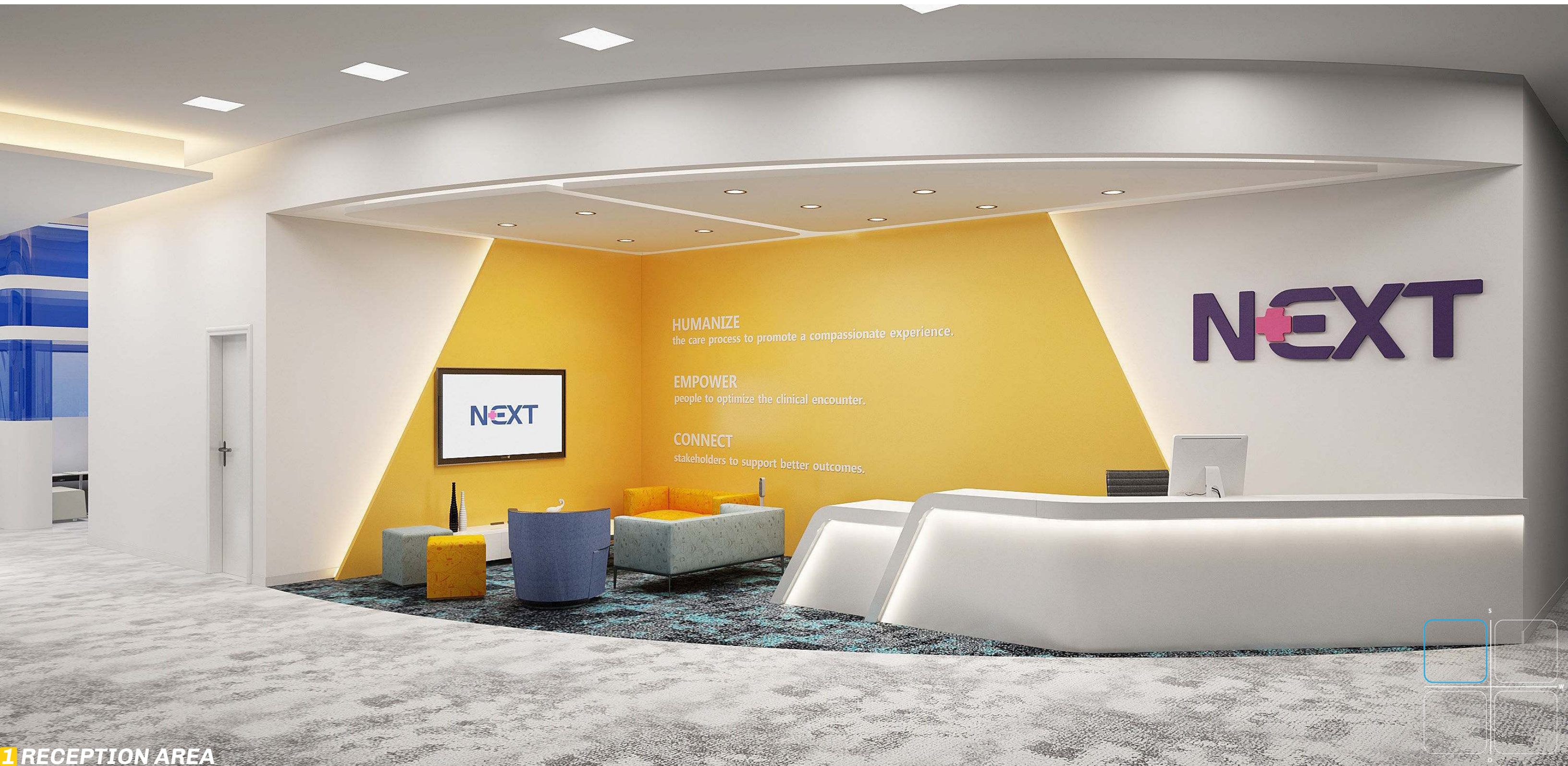
CEILING ELEMENT DESIGN PROCESS



LEGEND

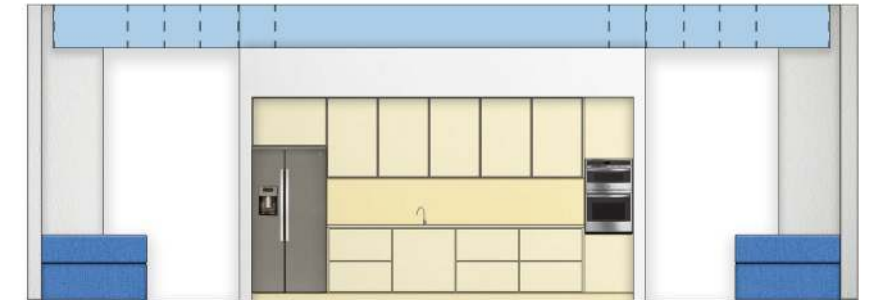
-  FLUORESCENT STRIP LIGHTING
-  4" LED RECESSED LIGHTING
-  10'-0" A.F.F.
-  11'-0" A.F.F.
-  12'-0" A.F.F.
-  WORKCAFE
-  OPEN OFFICE





**1** RECEPTION AREA





WorkCafe Elevation

### FURNITURE SELECTION - WORKCAFE

Steelcase Products



LessThanFive Chair



Heaven Table

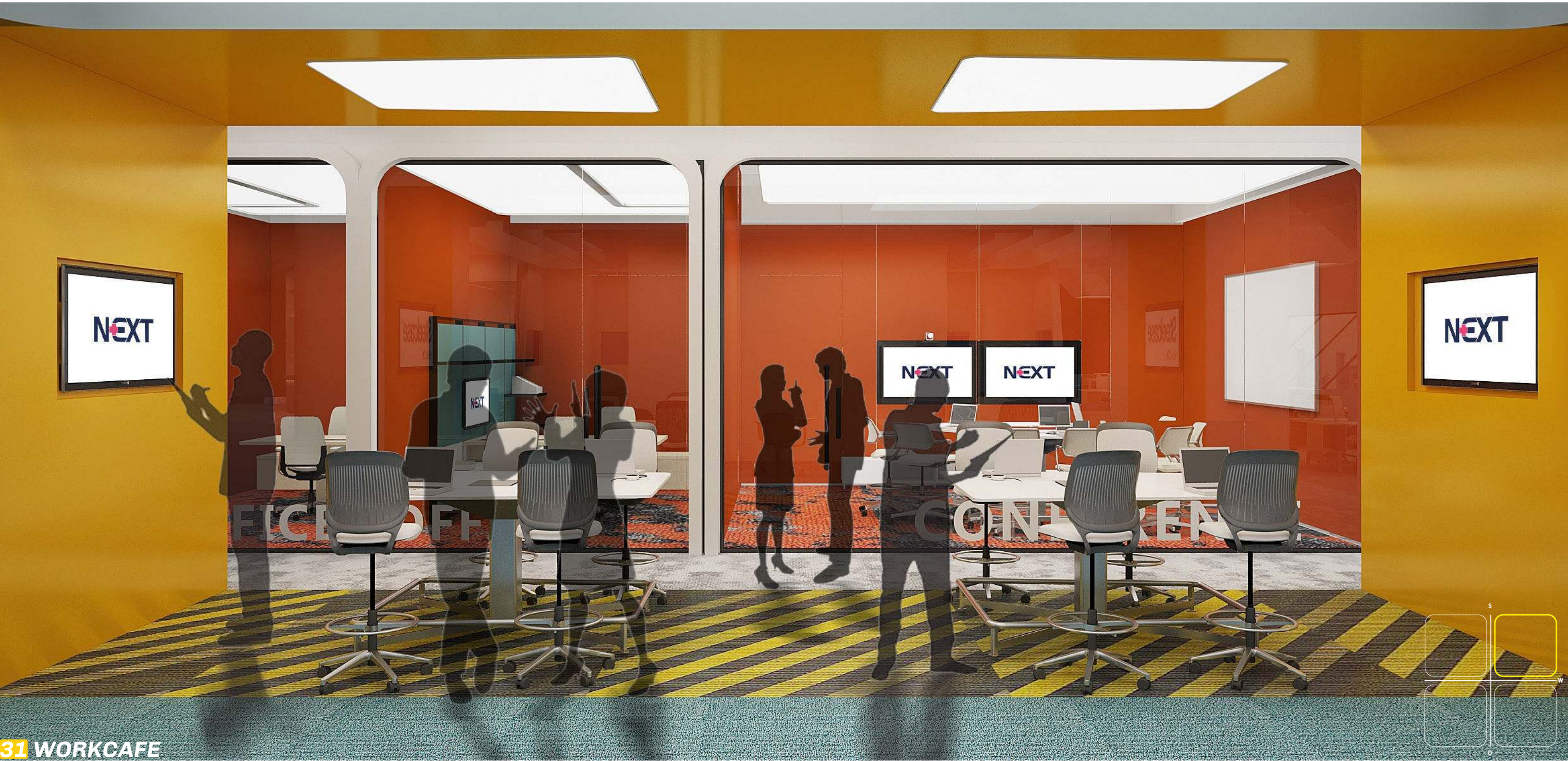


Enea Seating



Last Minute Stool





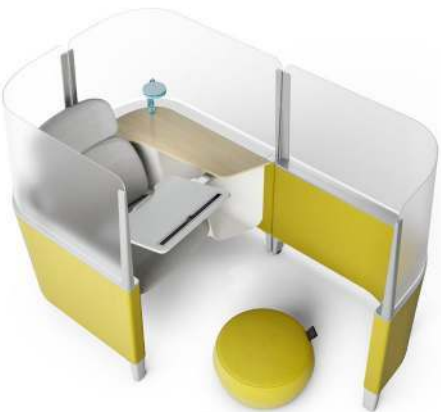




Open Office Area / Individual Work Area Elevation

**FURNITURE SELECTION - OPEN OFFICE AREA**

Steelcase Products



Brody



Campfire Lounge



Buoy



Think Chair



Bivi



Bivi Truck





## FURNITURE SELECTION - EXAMROOM

Steelcase Products



Empath



Node with ShareSurface



Folio



Regard





## ***FUTURE FOCUSED***

- Collaboration
- Technology
- Culture
- Wellbeing



***THANK YOU***