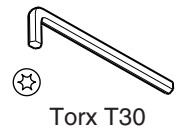
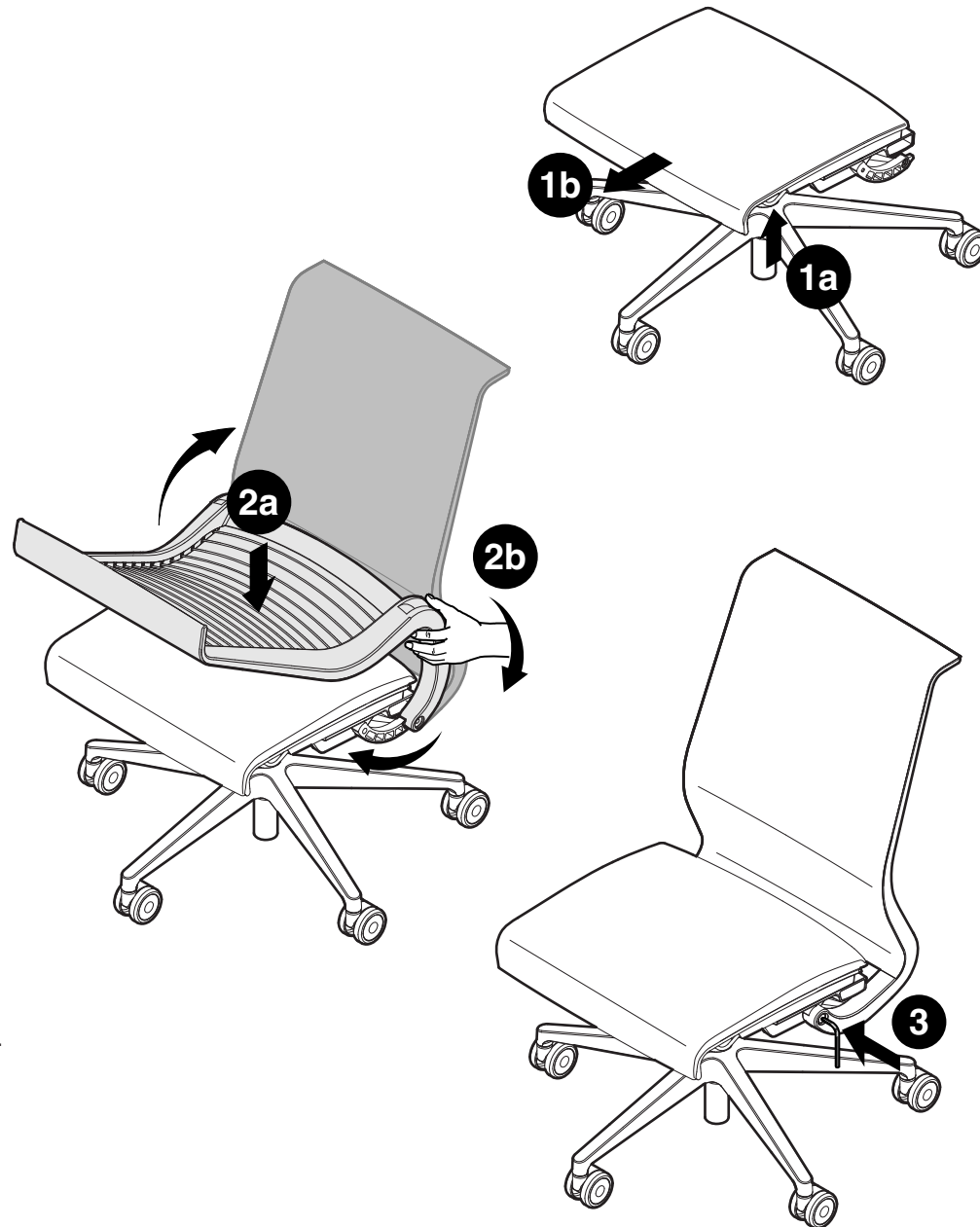


1. Lift seat bail (1a) and slide seat forward (1b).

2. Lay back cushion onto seat cushion and align backstops (2a). Holding onto the bottom of the back frame, rotate back frame and slide onto backstops (2b).

3. Install pivot screws, with a torx T30 allen wrench, on both sides of the back frame.



If you have a problem, question, or request, call your local dealer, or Steelcase Line 1 at **888.STEELCASE** (888.783.3522) for immediate action by people who want to help you. (Outside the U.S.A., Canada, Mexico, Puerto Rico, and the U.S. Virgin Islands, call: 1.616.247.2500) Or visit our website: www.steelcase.com

© 2004 Steelcase Inc.
Grand Rapids, MI 49501
U.S.A.

Printed in U.S.A.