

**Pneumatic Cylinder  
Removal Tool**

If you have a problem, question, or request, call  
your local dealer, or Steelcase Line 1 at  
**888.STEELCASE** (888.783.3522)  
for immediate action by people who want to help you.

(Outside the U.S.A., Canada, Mexico, Puerto Rico,  
and the U.S. Virgin Islands, call: 1.616.247.2500)

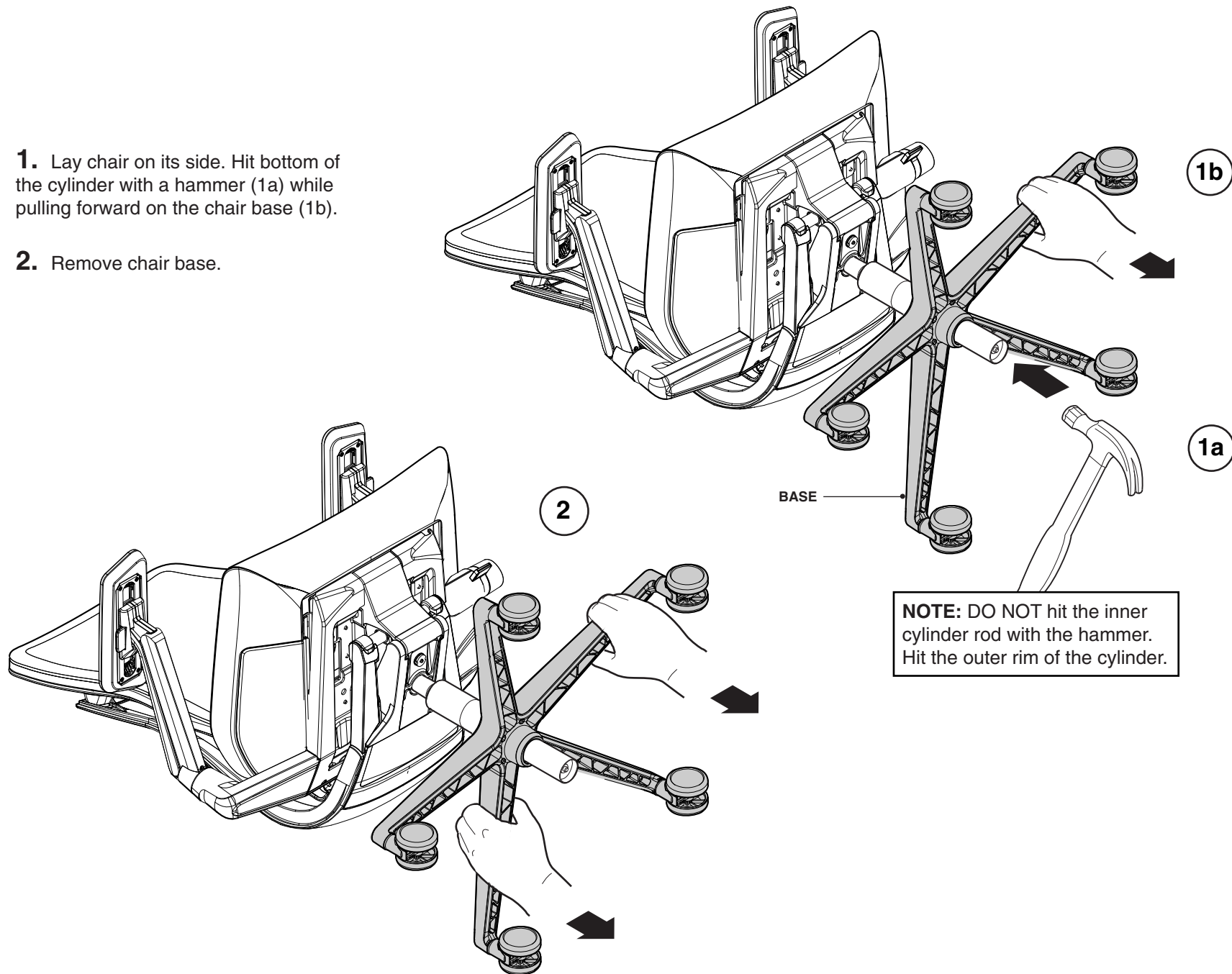
Or visit our website: [www.steelcase.com](http://www.steelcase.com)

© 2013 Steelcase Inc.  
Grand Rapids, MI 49501  
U.S.A.

Printed in U.S.A.

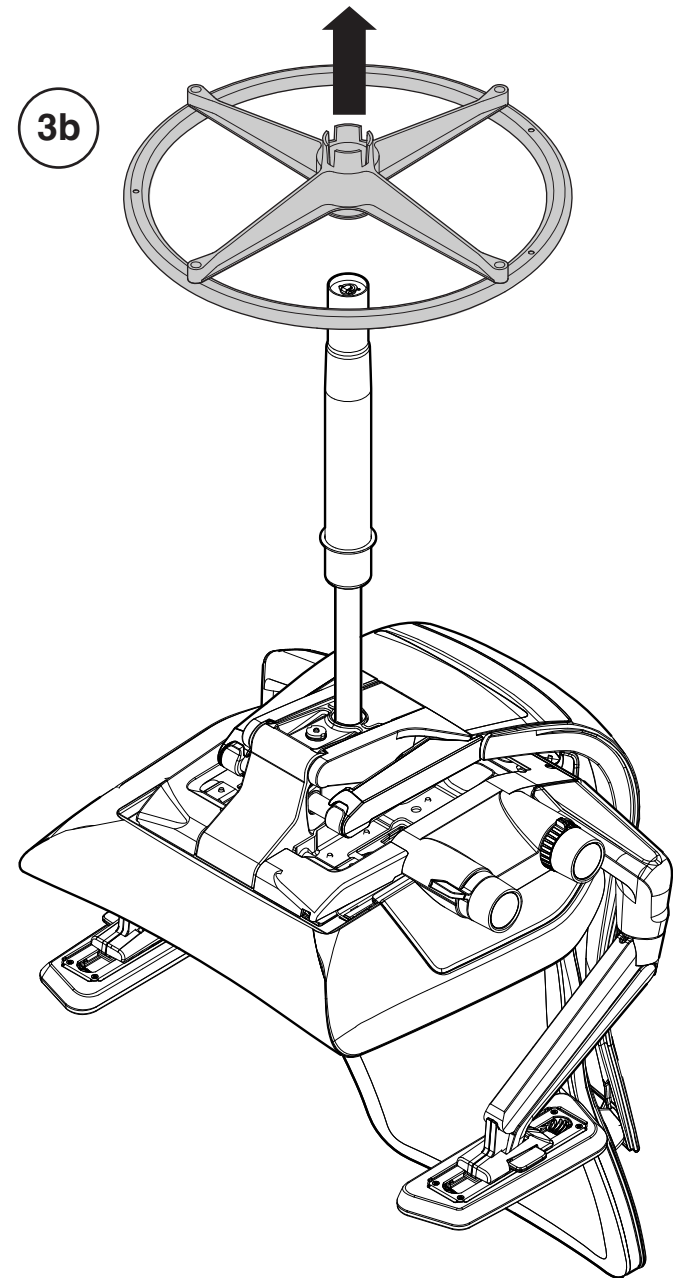
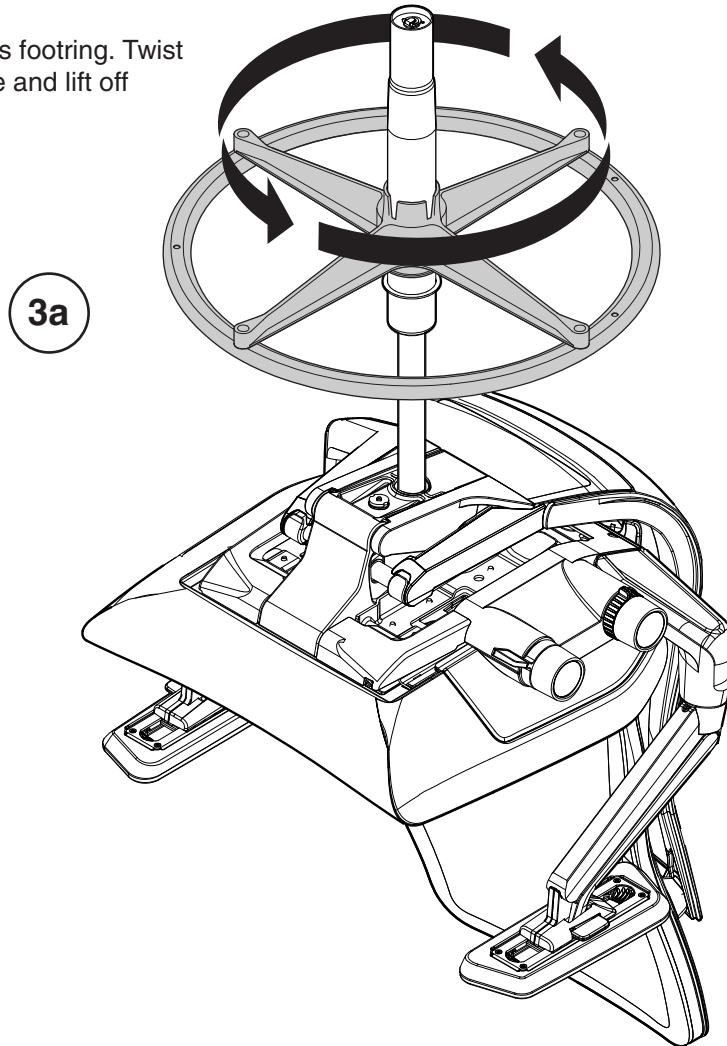
**1.** Lay chair on its side. Hit bottom of the cylinder with a hammer (1a) while pulling forward on the chair base (1b).

**2.** Remove chair base.



## For Stool Chairs Only

**3.** Position chair to access footring. Twist footring counter clock-wise and lift off cylinder.



**4.** Secure cylinder removal tool, (P/N 879100100), to cylinder and remove cylinder as shown below.

**5.** Apply lifting force to the column with one hand. With the hammer in the other hand, give the removal tool several solid hits on the flat area.

**TIP:** If cylinder does not separate from control, apply WD-40 where lift is embedded into control. Wait approx. 20 minutes and repeat procedure.

**6.** Install cylinder, (foot ring for stools) and base. Sit in chair to seat replacement cylinder.

