

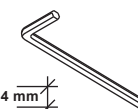
Required Tools



1. Power



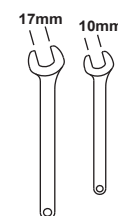
2. Plus Bit



4 mm

5 mm

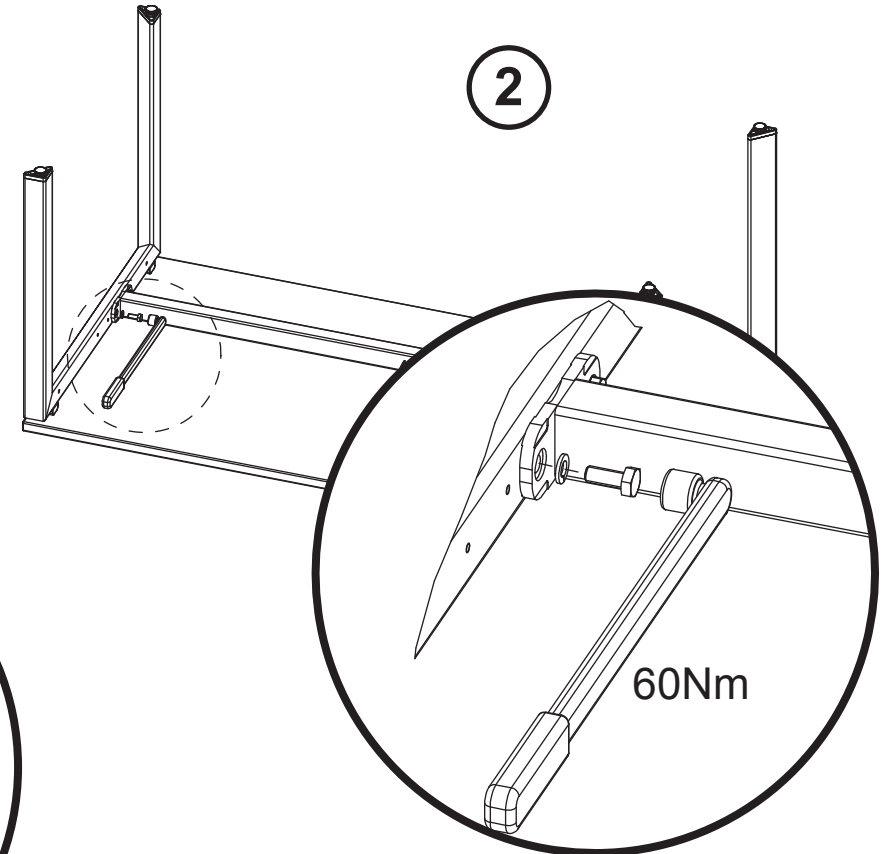
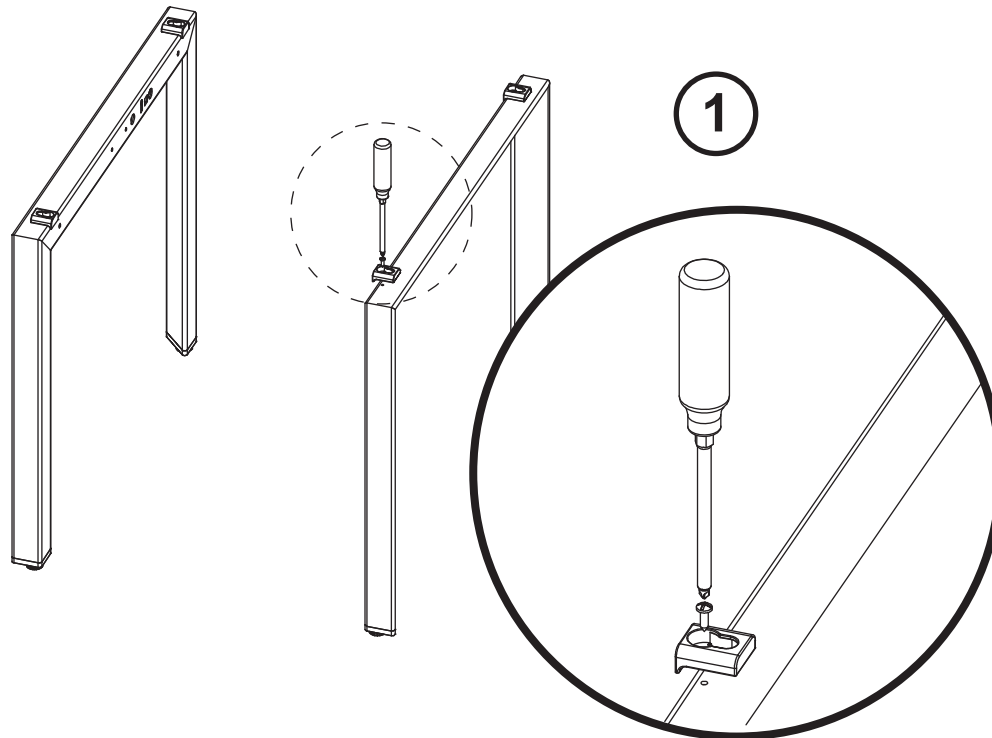
3. Allen Key



4. Spanner

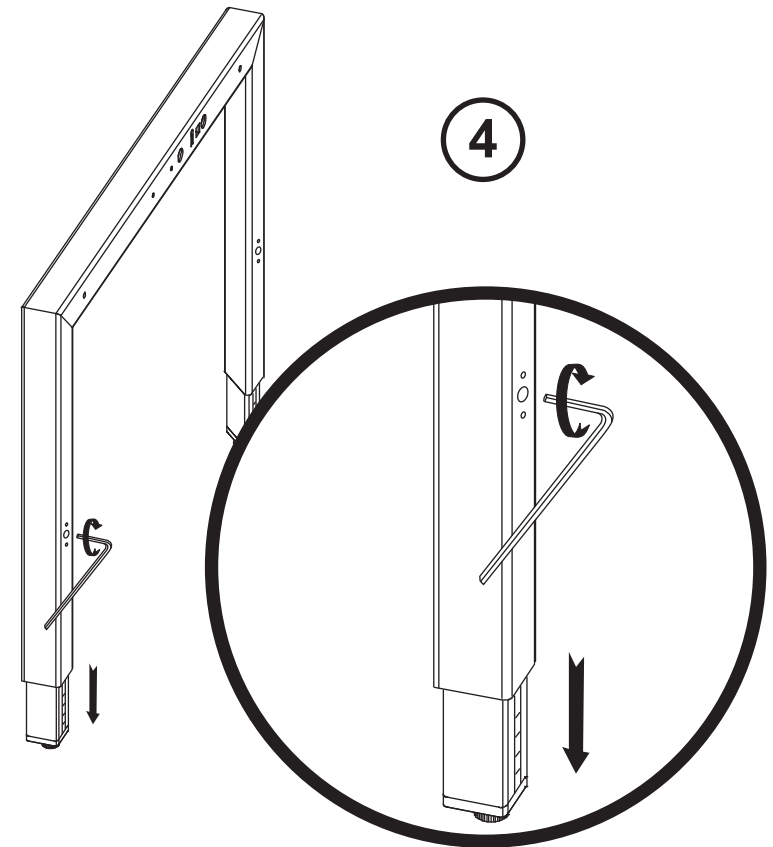
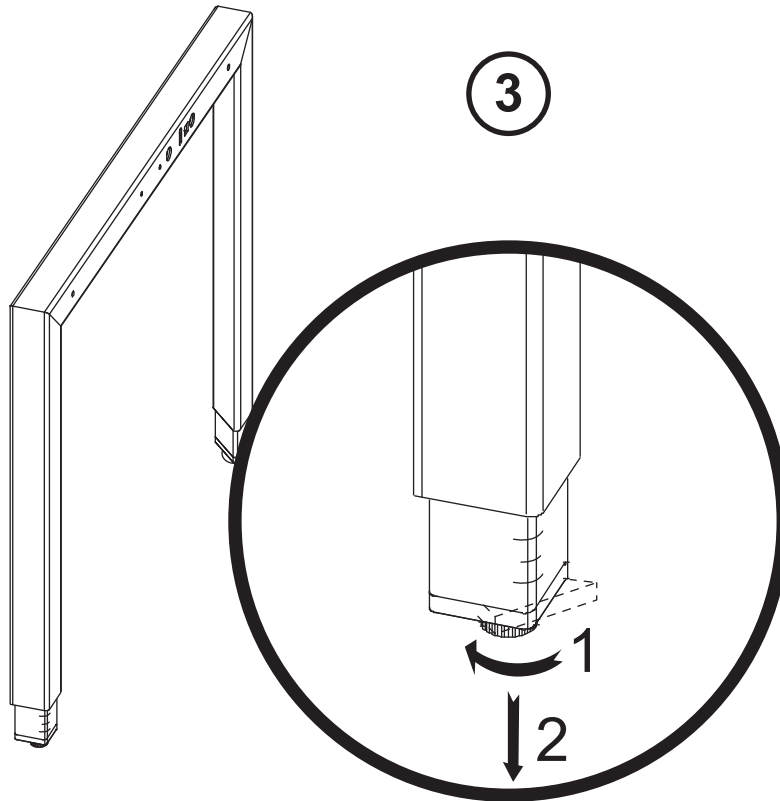
Desk + Fixed Leg

1. Screw the Distance Plate Holder to the Side Legs.
2. Align the Distance Plate Holder to the Mushroom Cap at desktop. Push the side leg toward understructure. Screw the understructure to the Side Leg using Hexagon Bolts & Spring Washers.



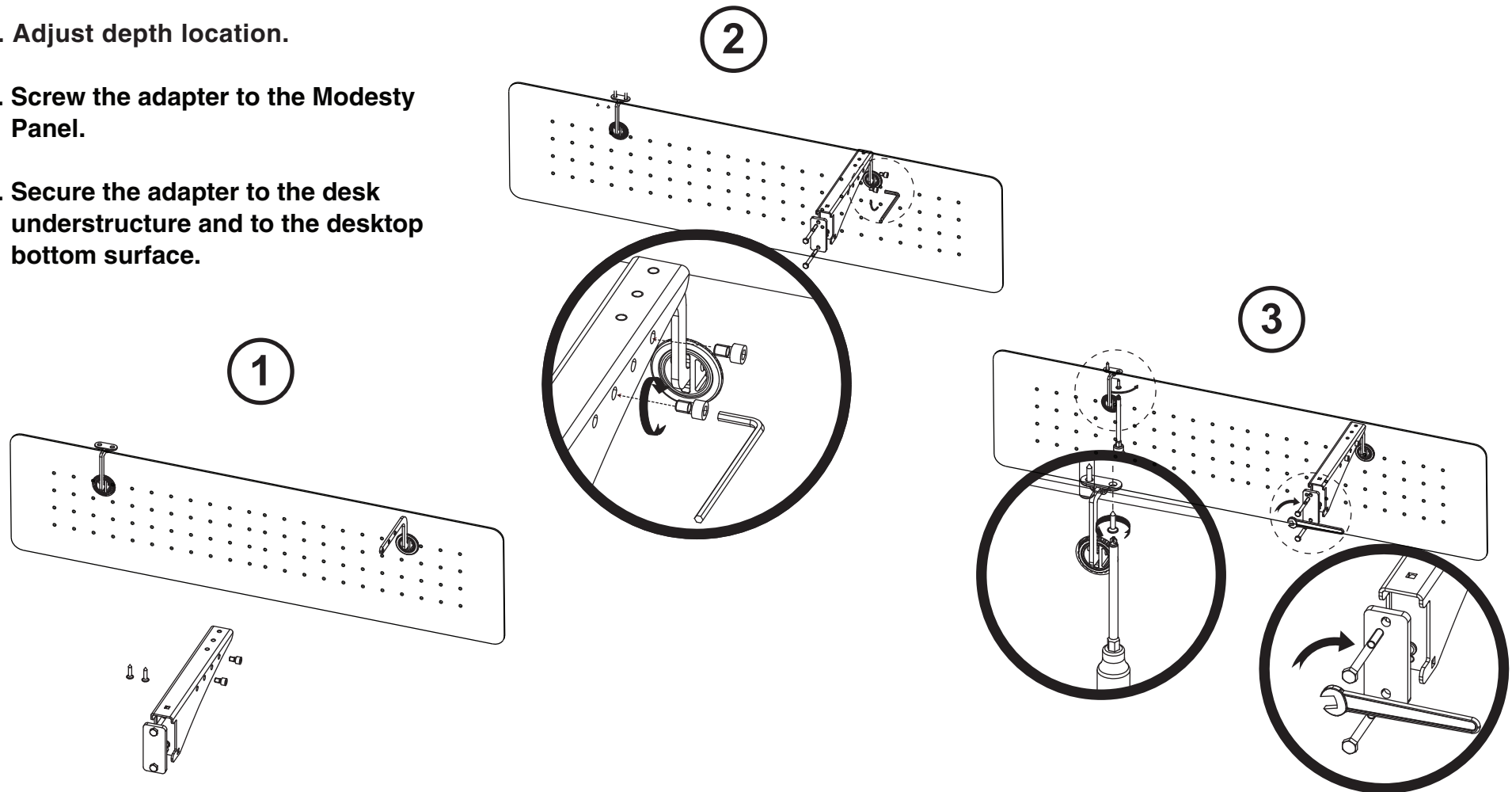
Telescopic Leg

3. Adjust the Telescopic Leg to desire height.
4. Secure the set screw to fix the leg position.



Modesty Panel for Type 16

1. Adjust depth location.
2. Screw the adapter to the Modesty Panel.
3. Secure the adapter to the desk understructure and to the desktop bottom surface.



Modesty Panel for Type 10/12/13/14/21/25

1. Adjust the depth location.
2. Screw the adapters to Modesty Panel.
3. Secure the adapter to the desk understructure.

