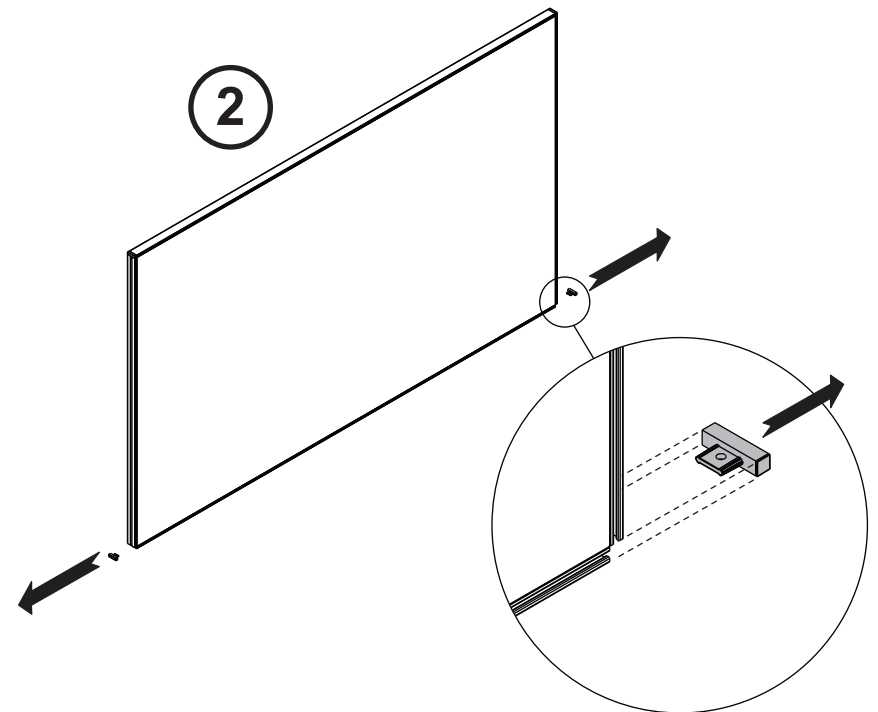
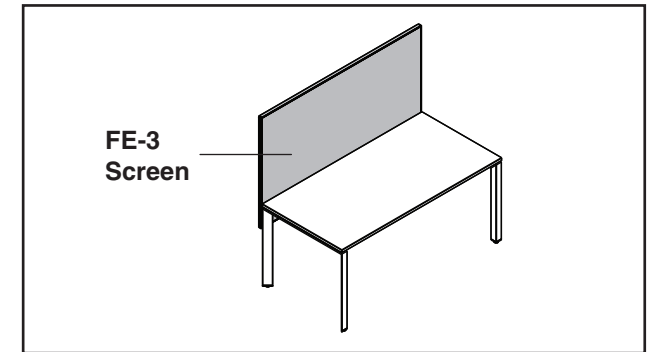
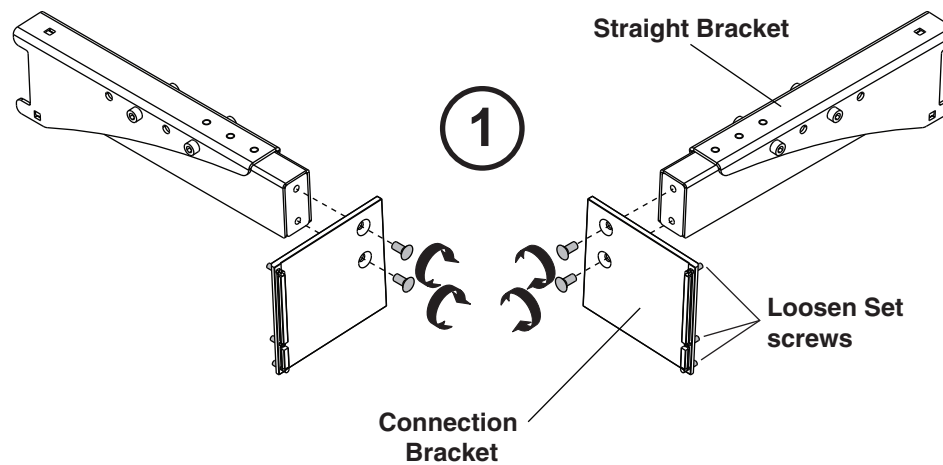


FE-3 Screen + Table

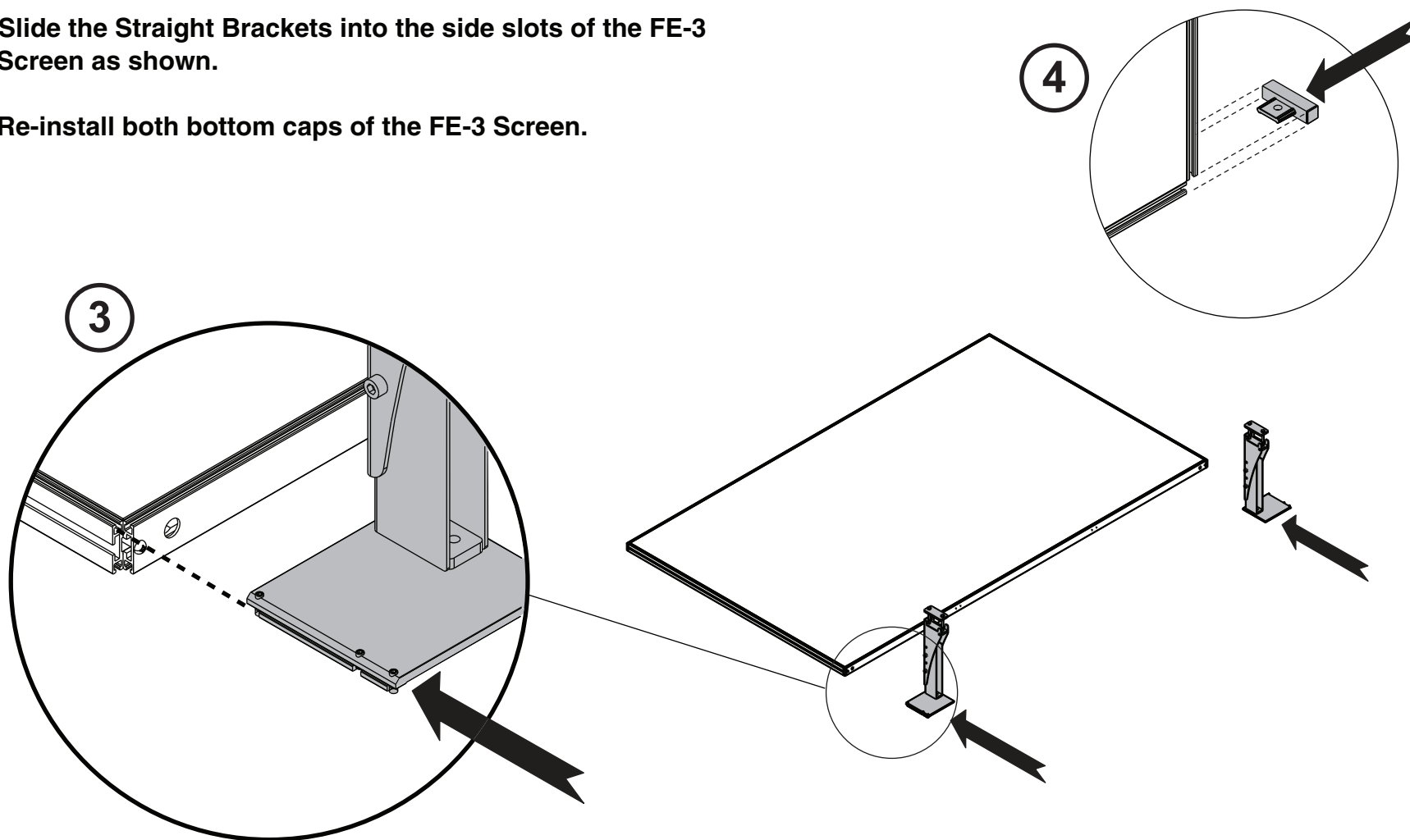
1. Fix the Connection Bracket to the Straight Bracket by tightening two M6 screws each. Install as left and right configuration as shown. Loosen the set screws but do not remove it.
2. Remove both FE-3 screen bottom caps.



FE-3 Screen + Table

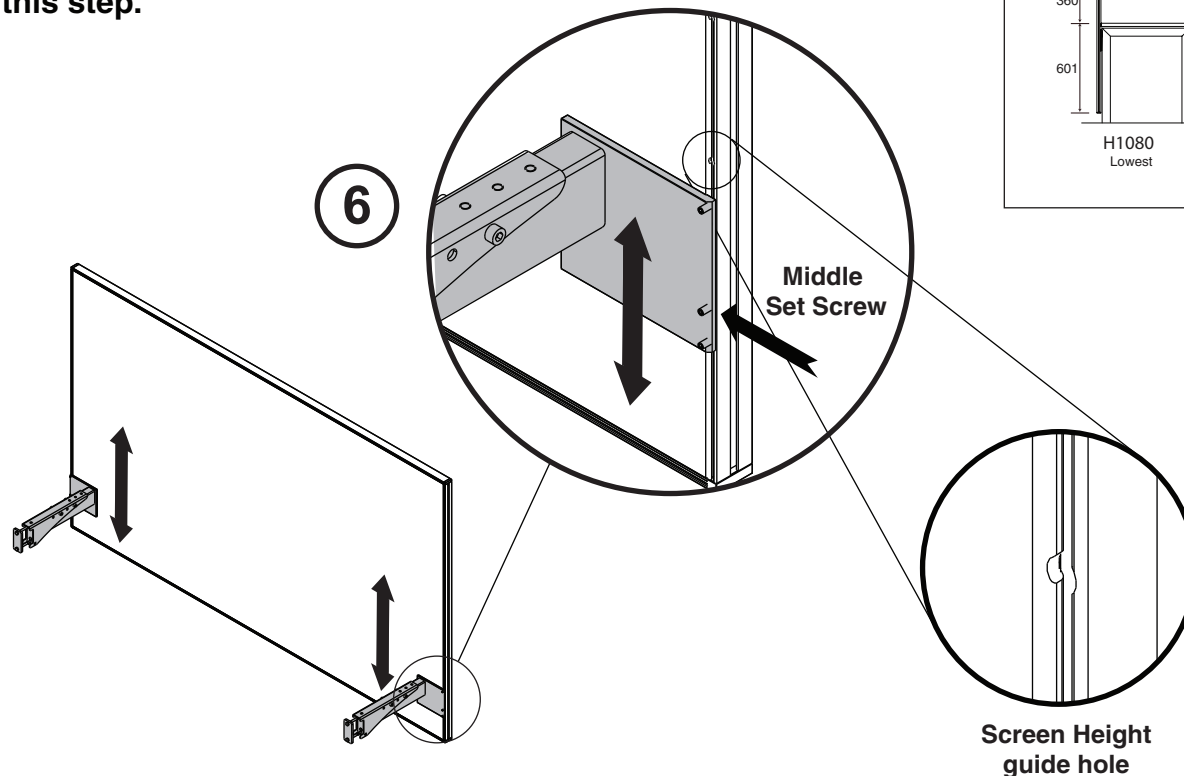
3. Slide the Straight Brackets into the side slots of the FE-3 Screen as shown.

4. Re-install both bottom caps of the FE-3 Screen.



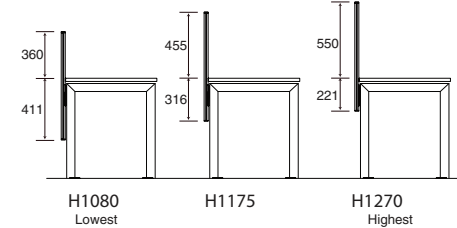
FE-3 Screen + Table

5. Refer to the diagram on the right to define the desired height for the screen.
6. Align the middle Set Screw to the desired Screen Height guide hole. Tighten this screw to lock it to the guide hole. Then, tighten the rest of the Set Screws to secure the bracket. Align the opposite bracket to the same height and repeat this step.

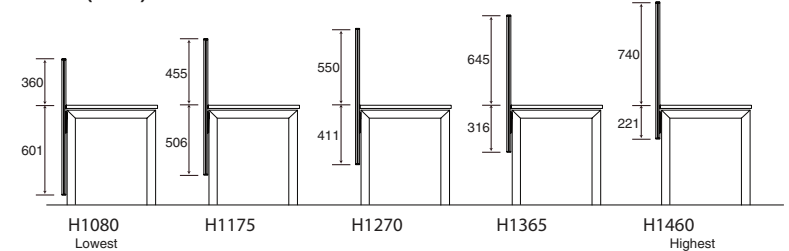


5

H800 (H771) FE-3 Screen



H1000 (H963) FE-3 Screen



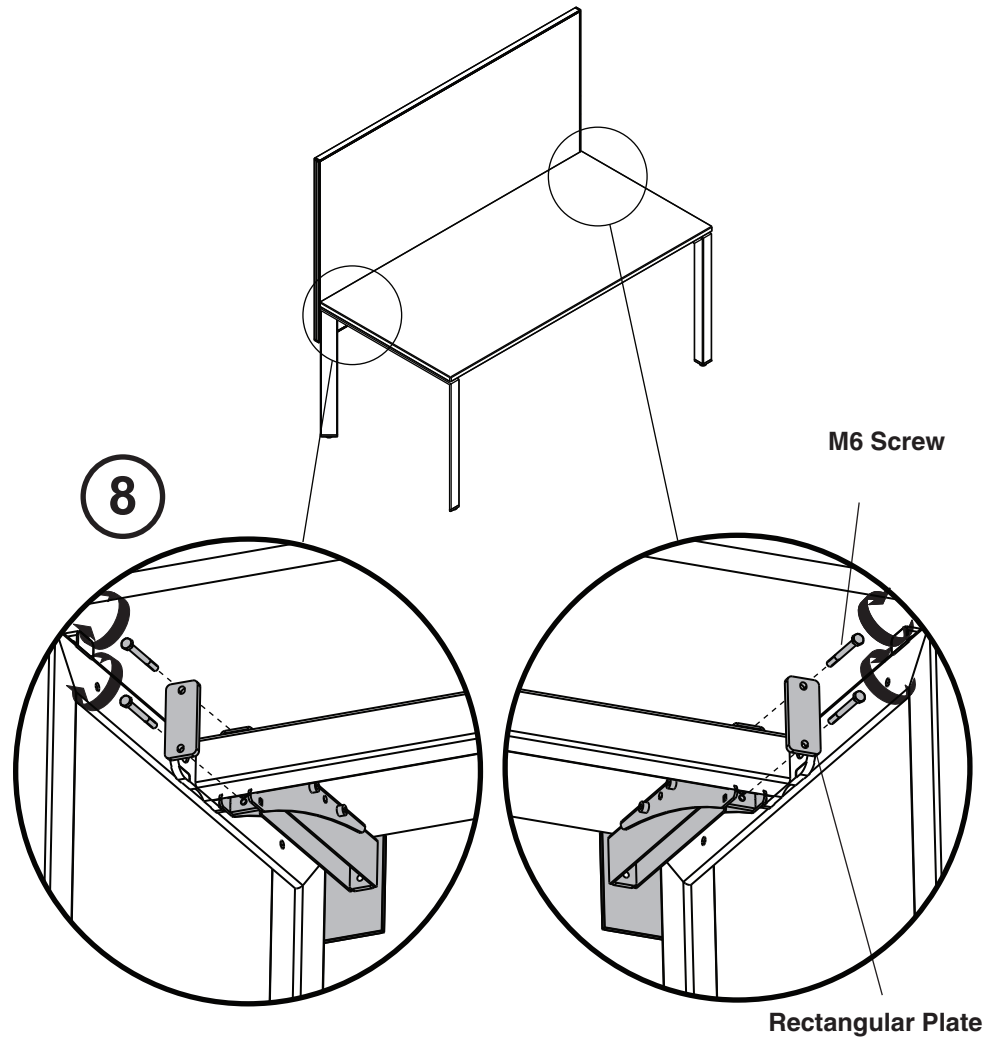
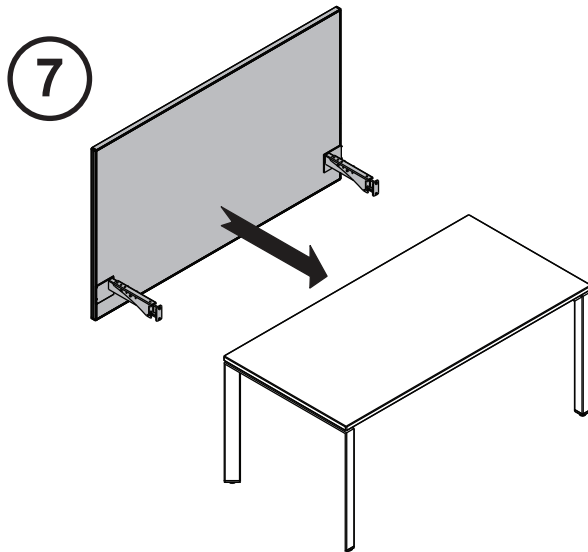
Screen Height Guide Hole

This hole functions as a guide to determine the overall height of the FE-3 screen installed to the FrameOne desk.

Note:
Lowest Guide Hole = Highest Screen Position

FE-3 Screen + Table

7. Position the FE-3 screen to the table.
The screen bracket should be attached to the understructure of the table.
Make sure that the side of the screen is flush with the side of the table top.
8. Tighten two M6 screws with its rectangular plate on each bracket as shown.
Make sure it is fixed securely.



FE-3 Screen + Table

9. View of the completed installation of FE-3 Screen to a FrameOne straight table.

