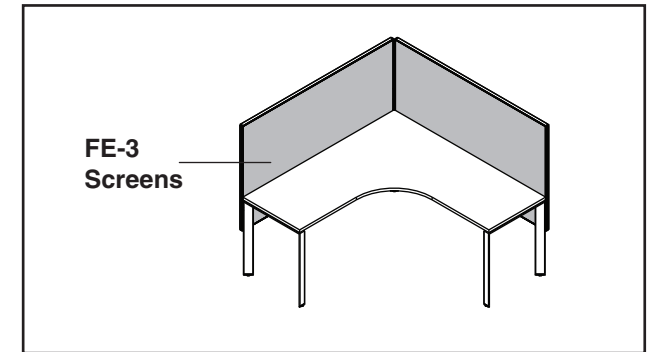
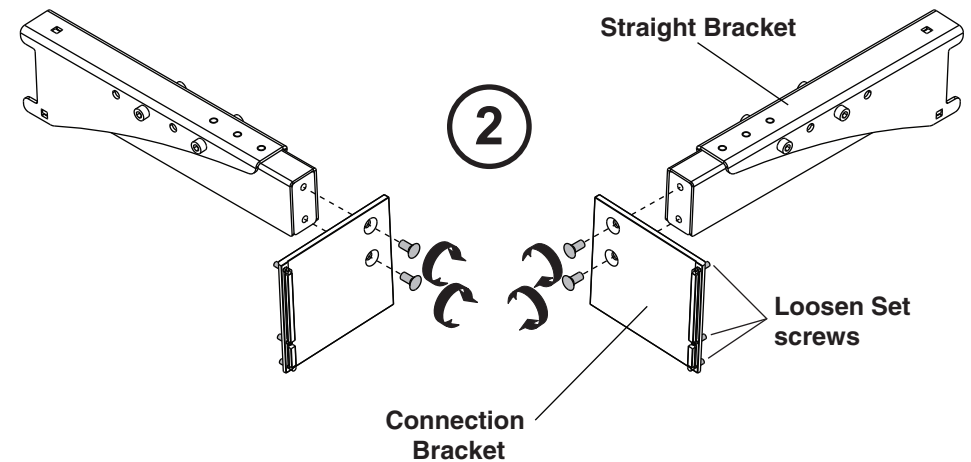
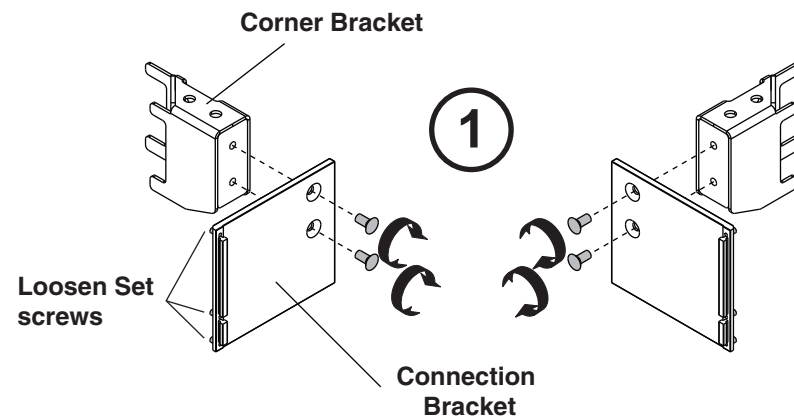


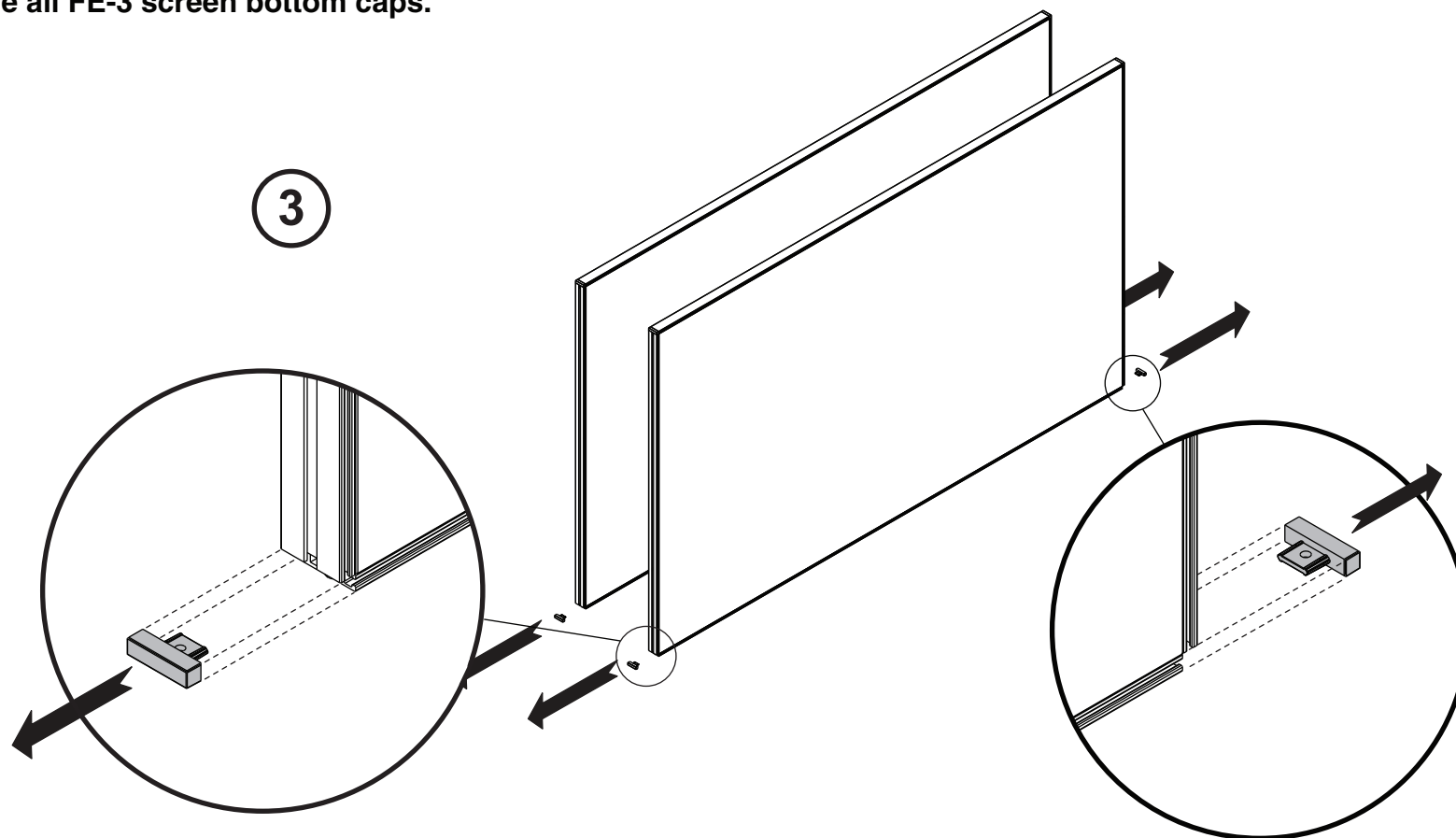
## FE-3 Screens + Table

1. Fix the Connection Bracket to the Corner Bracket by tightening two M6 screws each. Install as left and right configuration as shown. Loosen the set screws but do not remove it.
2. Fix the Connection Bracket to the Straight Bracket by tightening two M6 screws each. Install as left and right configuration as shown. Loosen the set screws but do not remove it.



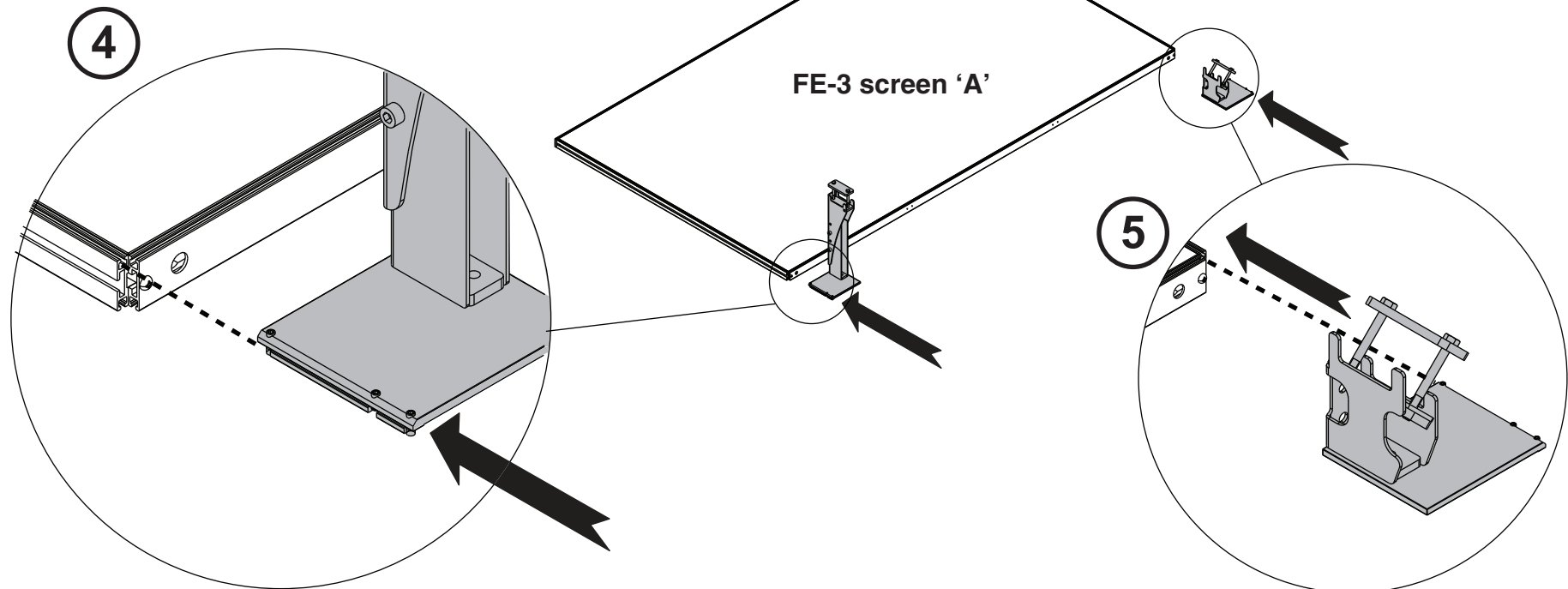
**FE-3 Screens + Table**

3. Remove all FE-3 screen bottom caps.



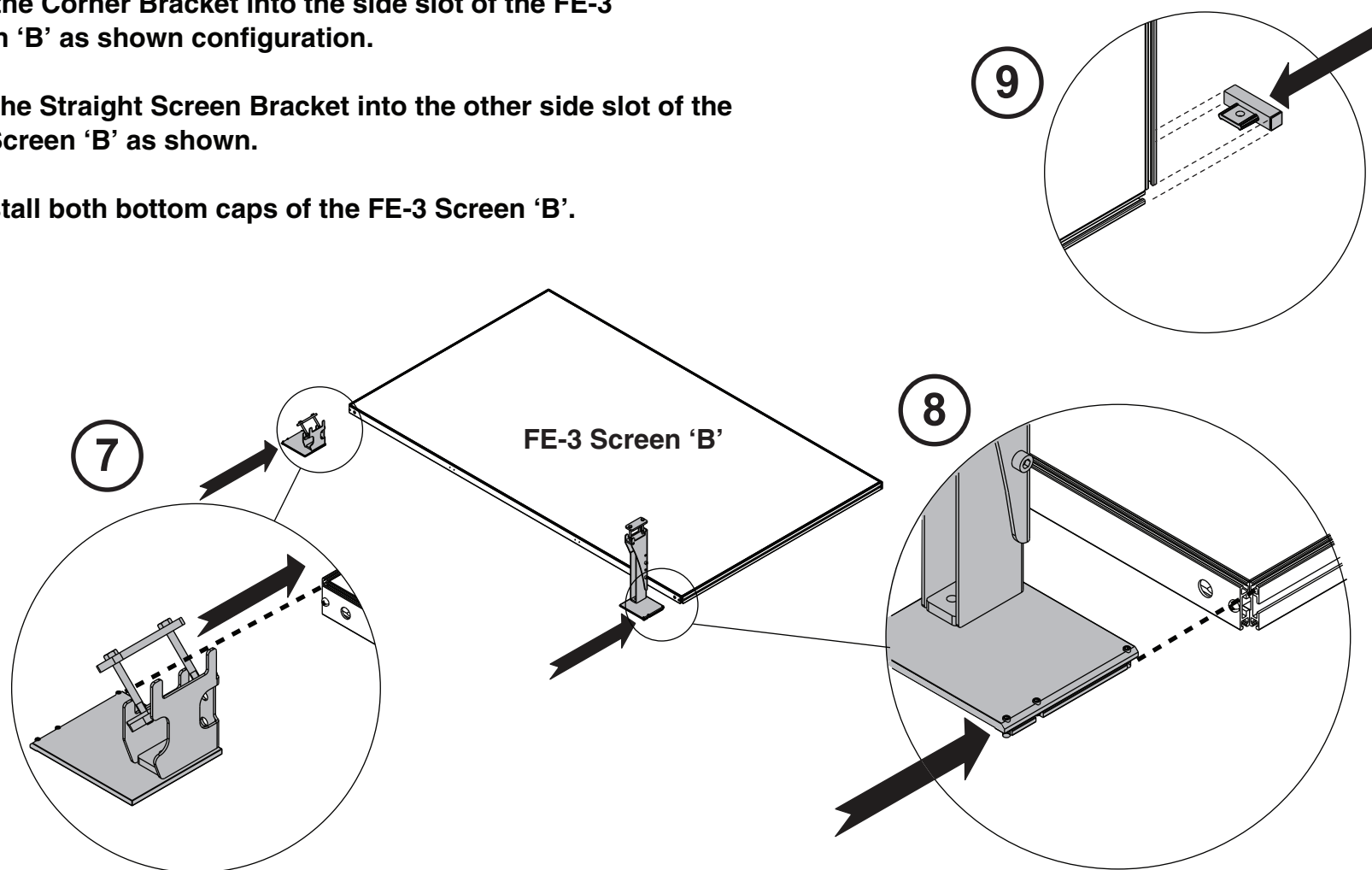
### FE-3 Screens + Table

4. Slide the Straight Bracket into the side slot of the FE-3 Screen 'A' as shown configuration.
5. Slide the Corner Screen Bracket into the other side slot of the FE-3 Screen 'A' as shown.
6. Re-install both bottom caps of the FE-3 Screen A.



**FE-3 Screens + Table**

7. Slide the Corner Bracket into the side slot of the FE-3 Screen 'B' as shown configuration.
8. Slide the Straight Screen Bracket into the other side slot of the FE-3 Screen 'B' as shown.
9. Re-install both bottom caps of the FE-3 Screen 'B'.

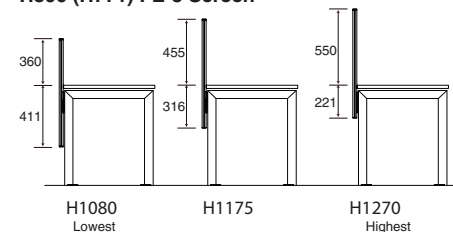


## FE-3 Screens + Table

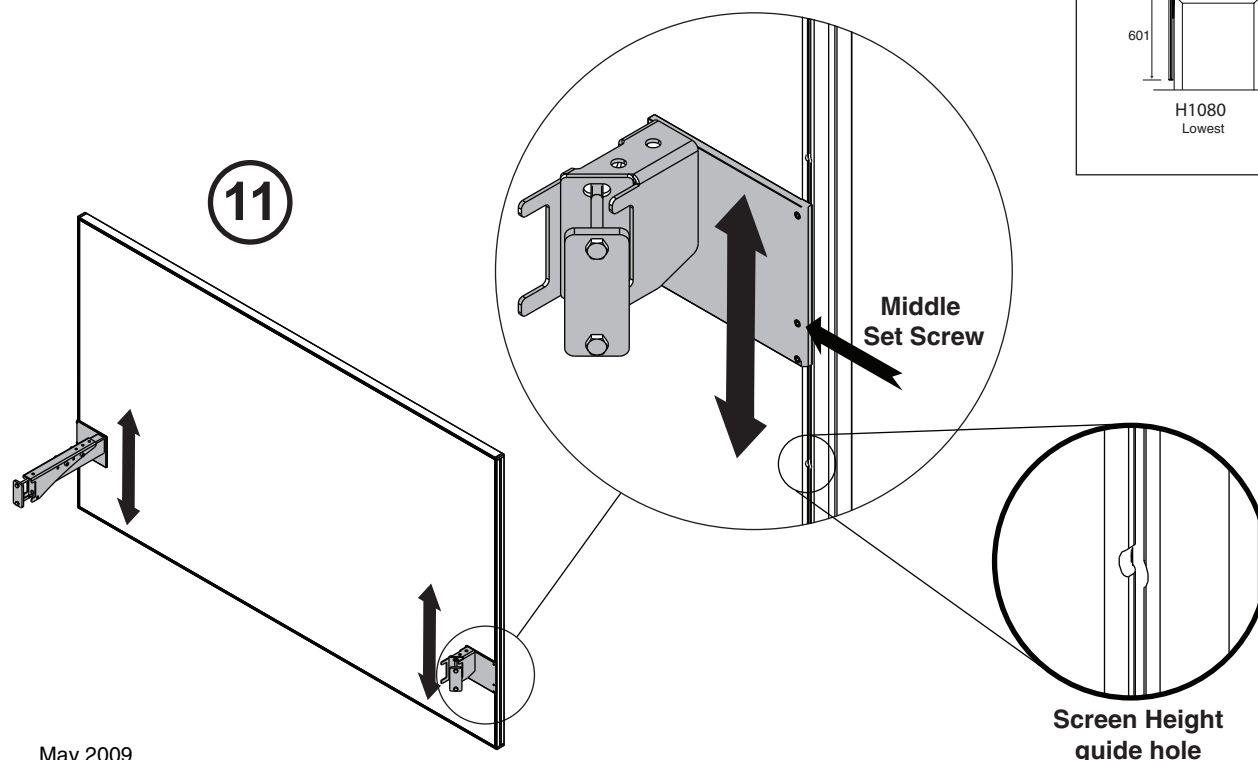
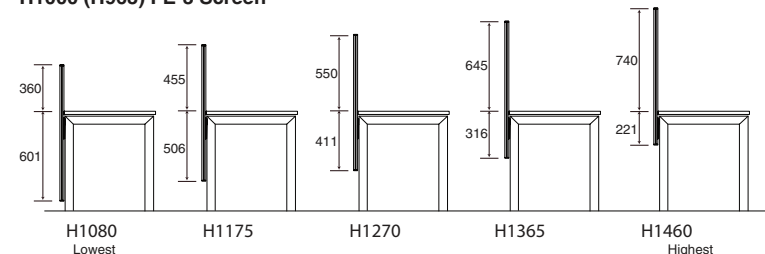
10. Refer to the diagram on the right to define the desired height for the screens.
11. Align the middle Set Screw to the desired Screen Height guide hole. Tighten this screw to lock it to the guide hole. Then, tighten the rest of the Set Screws to secure the bracket. Align the other bracket to the same height and repeat this step. Define the height for the other screen with this same step.

10

H800 (H771) FE-3 Screen



H1000 (H963) FE-3 Screen



### Screen Height Guide Hole

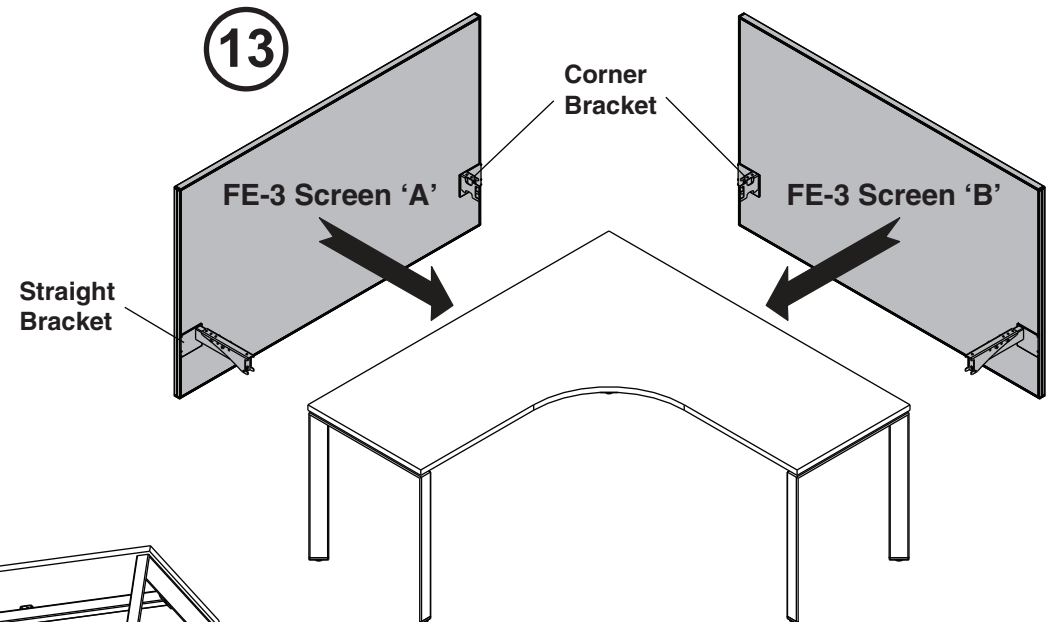
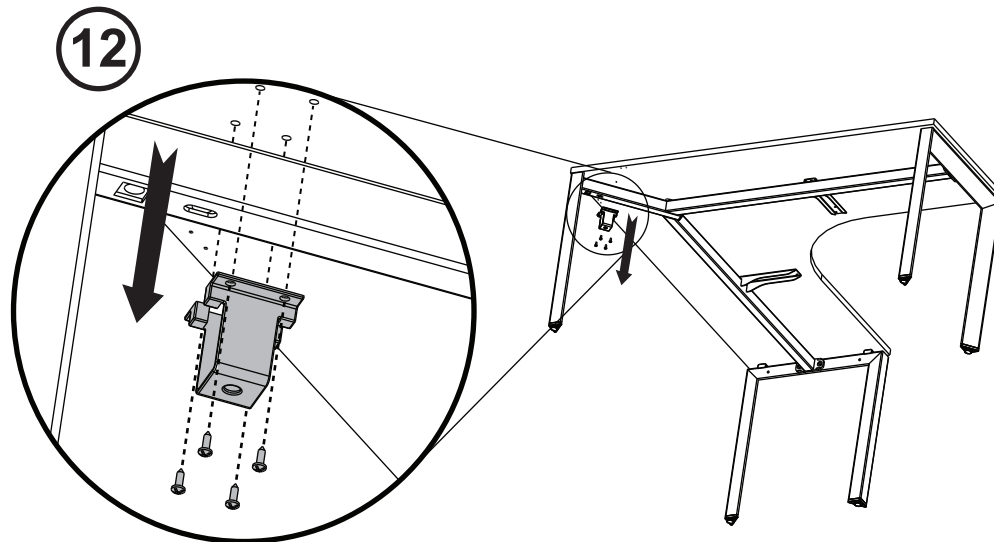
This hole functions as a guide to determine the overall height of the FE-3 screen installed to the FrameOne desk.

**Note:**  
Lowest Guide Hole = Highest Screen Position

## FE-3 Screens + Table

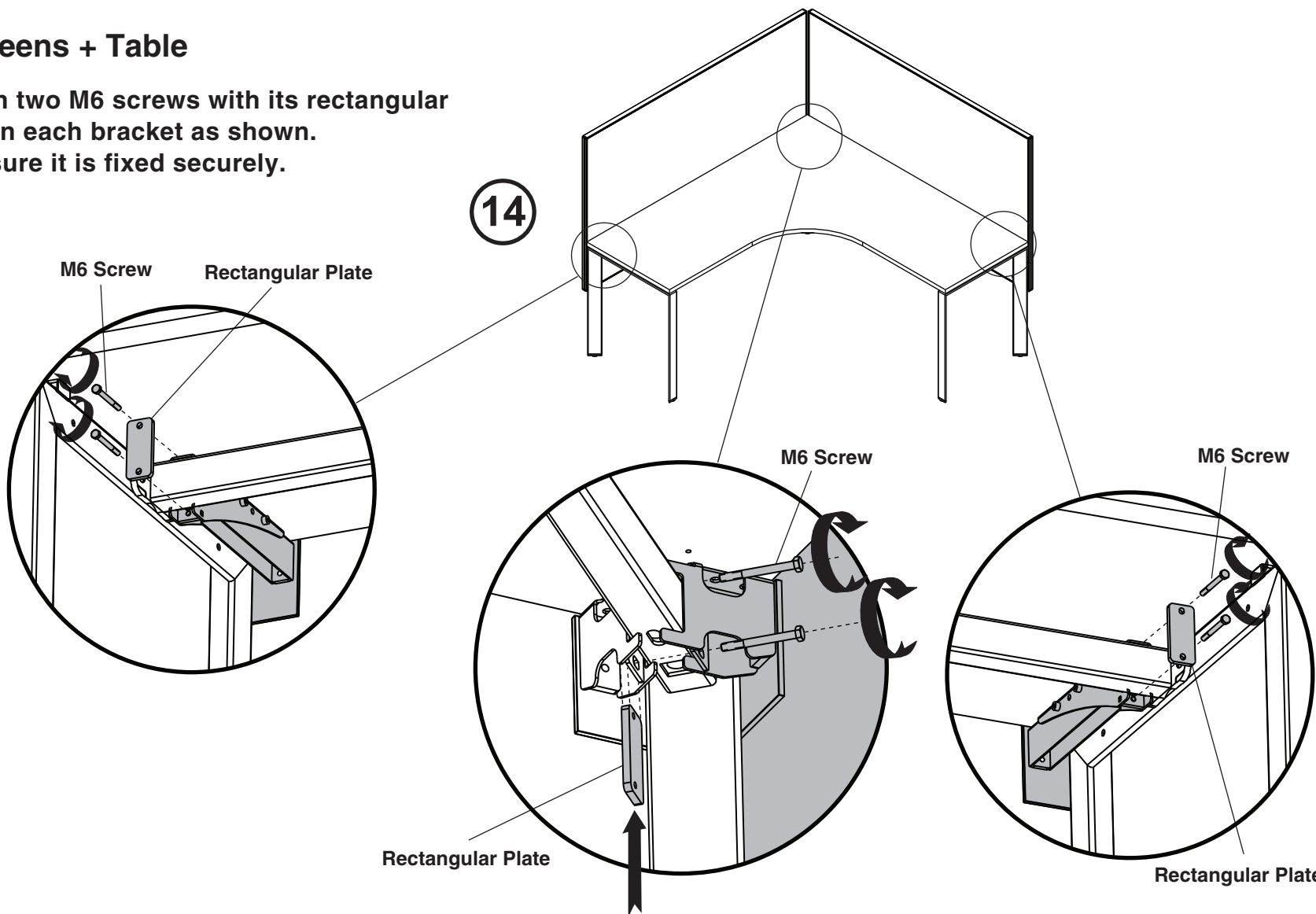
12. Remove the support bracket.

13. Position the FE-3 screen 'A' and 'B' to the table.  
The screen brackets should be attached to the understructure of the table.  
Make sure that the sides of the screens are flush with the sides of the table top.



## FE-3 Screens + Table

14. Tighten two M6 screws with its rectangular plate on each bracket as shown.  
Make sure it is fixed securely.



**FE-3 Screens + Table**

15. View of the completed installation of FE-3 Screens to a FrameOne 90 degree table.

