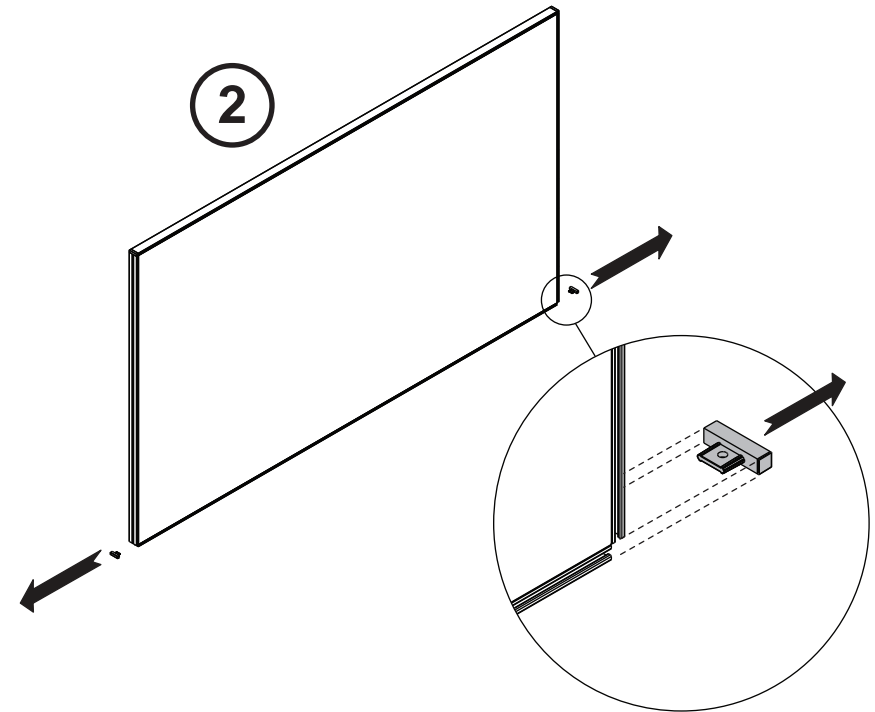
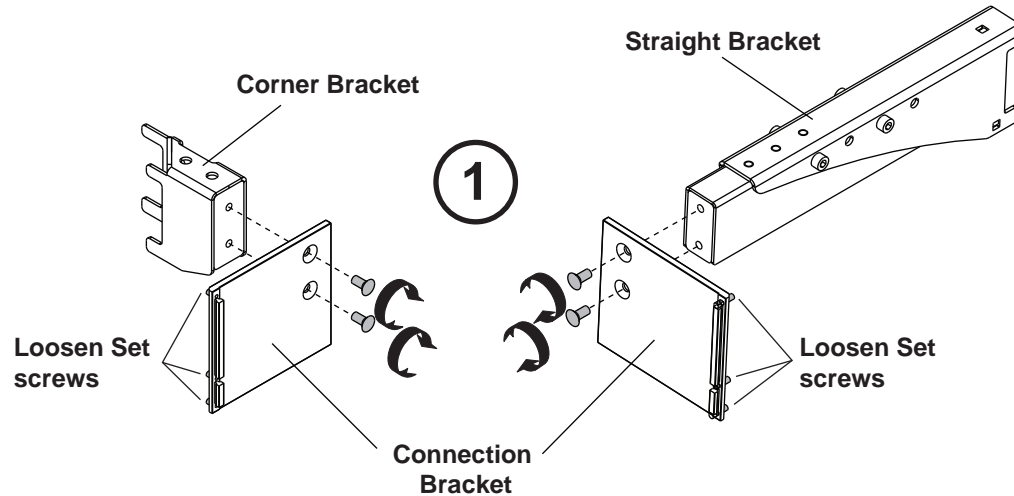
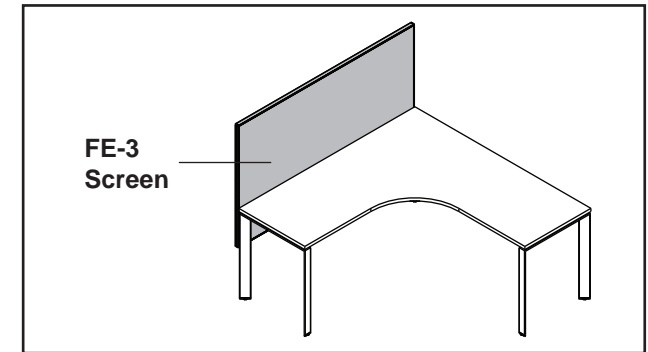


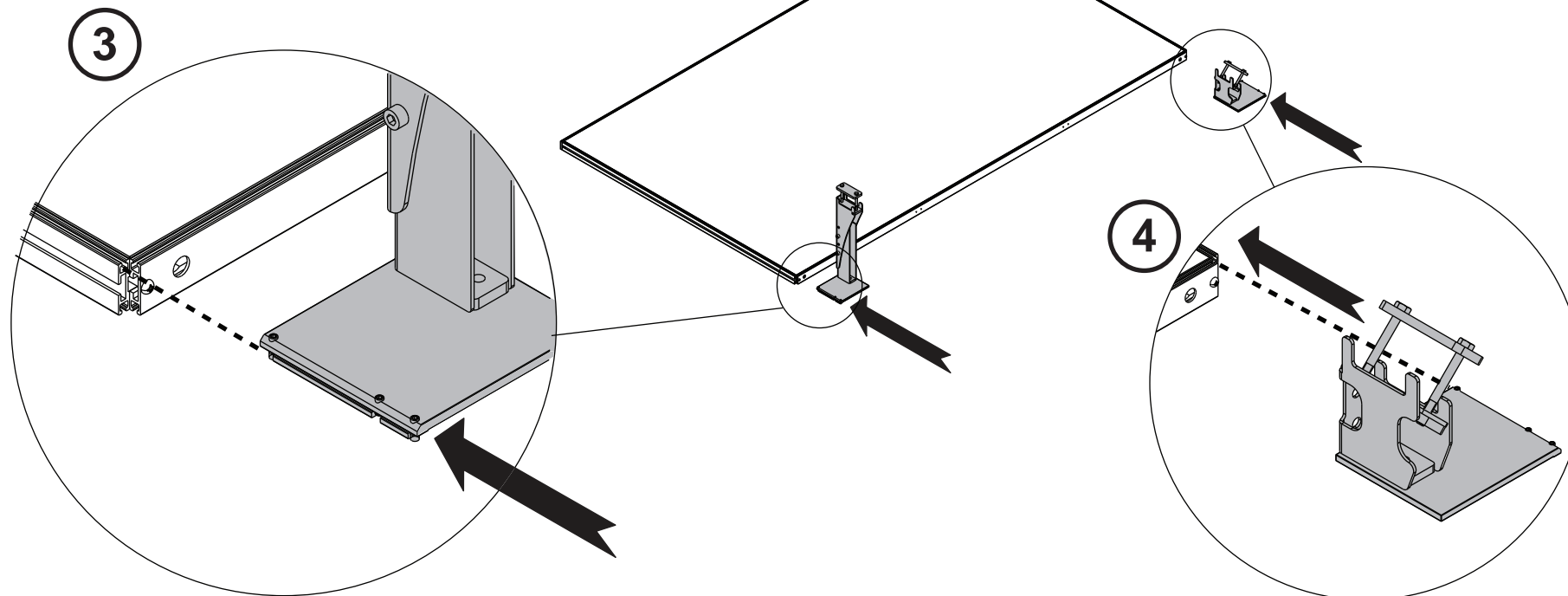
FE-3 Screen (Left Hand) + Table

1. Fix the Connection Brackets to the Straight and Corner Bracket by tightening two M6 screws each as shown configuration.
Loosen the set screws but do not remove it.
2. Remove both FE-3 screen bottom caps.



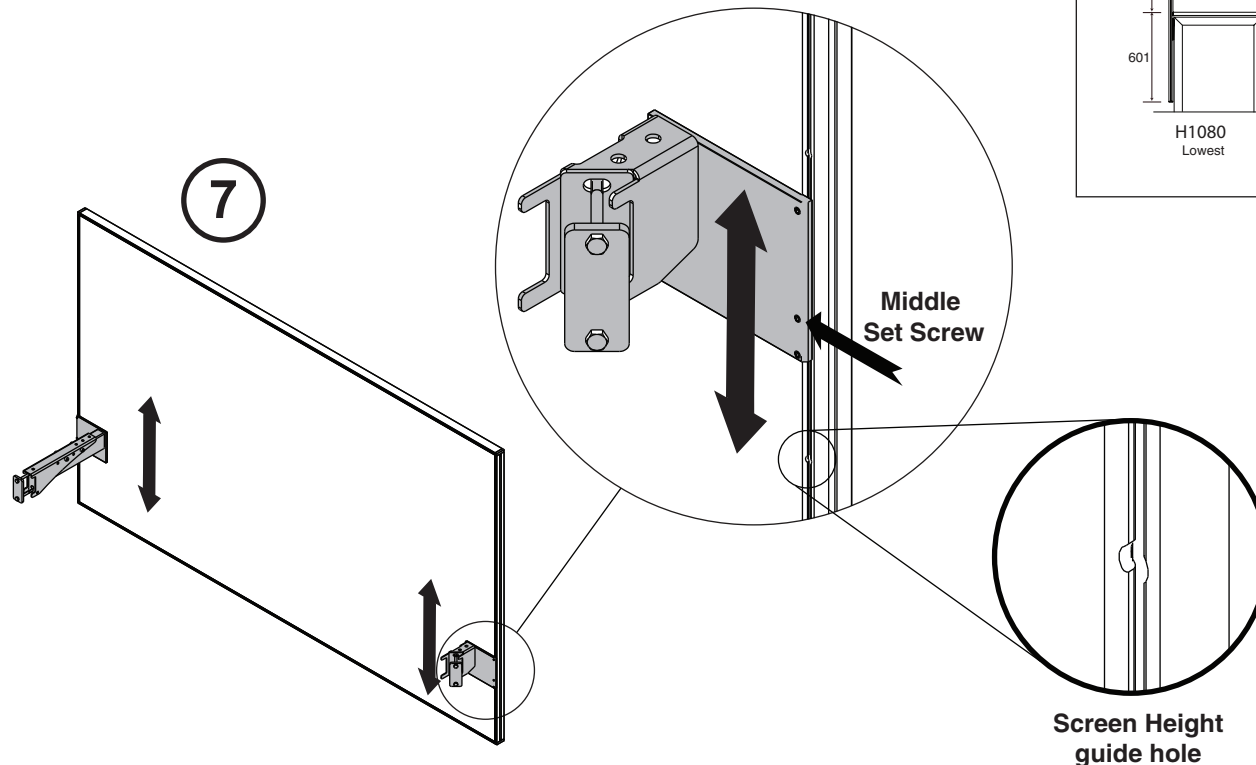
FE-3 Screen (Left Hand) + Table

3. Slide the Straight Bracket into the side slot of the FE-3 Screen as shown.
4. Slide the Corner Screen Bracket into the other side slot of the FE-3 Screen as shown.
5. Re-install both bottom caps of the FE-3 Screen.



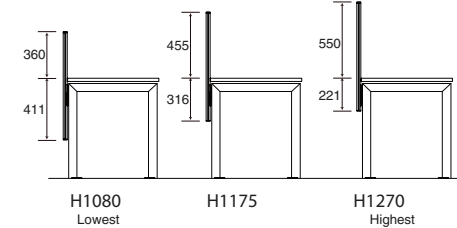
FE-3 Screen (Left Hand) + Table

6. Refer to the diagram on the right to define the desired height for the screen.
7. Align the middle Set Screw to the desired Screen Height guide hole. Tighten this screw to lock it to the guide hole. Then, tighten the rest of the Set Screws to secure the bracket. Align the other bracket to the same height and repeat this step.

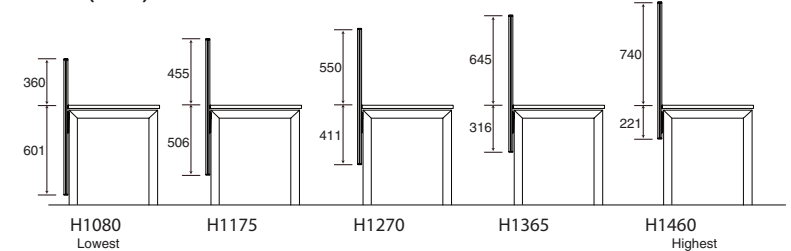


6

H800 (H771) FE-3 Screen



H1000 (H963) FE-3 Screen



Screen Height Guide Hole

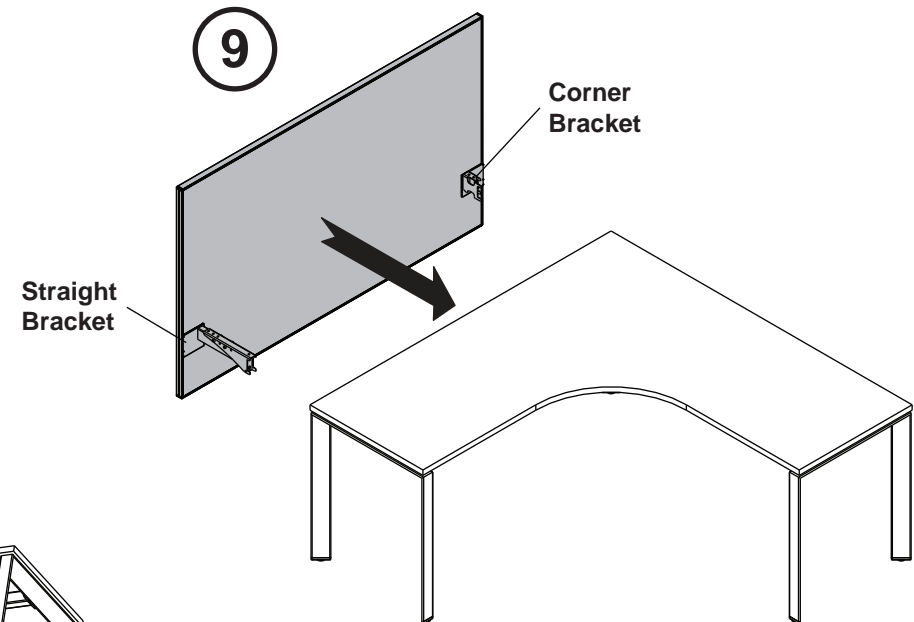
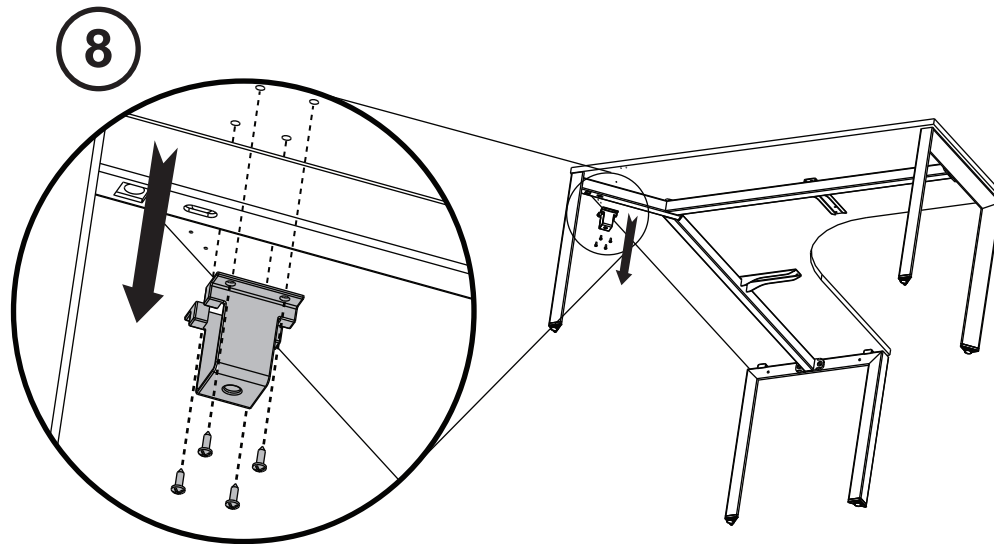
This hole functions as a guide to determine the overall height of the FE-3 screen installed to the FrameOne desk.

Note:
Lowest Guide Hole = Highest Screen Position

FE-3 Screen (Left Hand) + Table

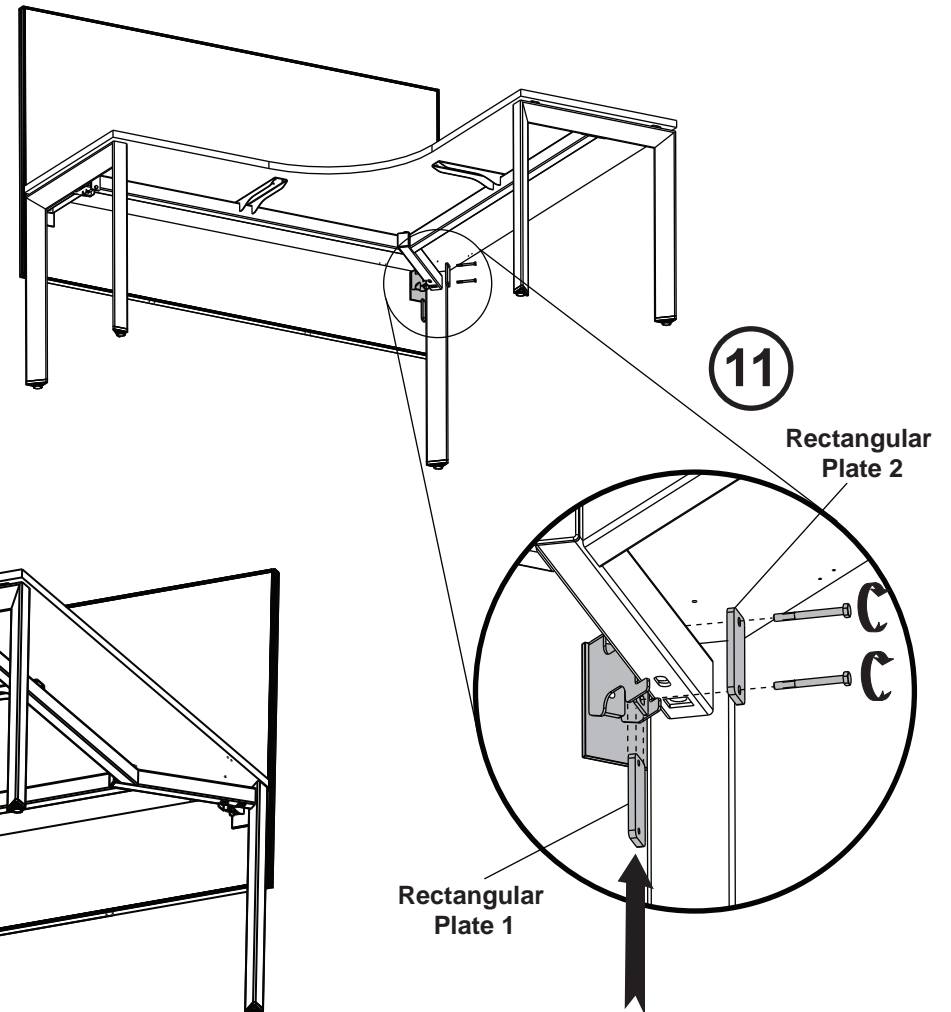
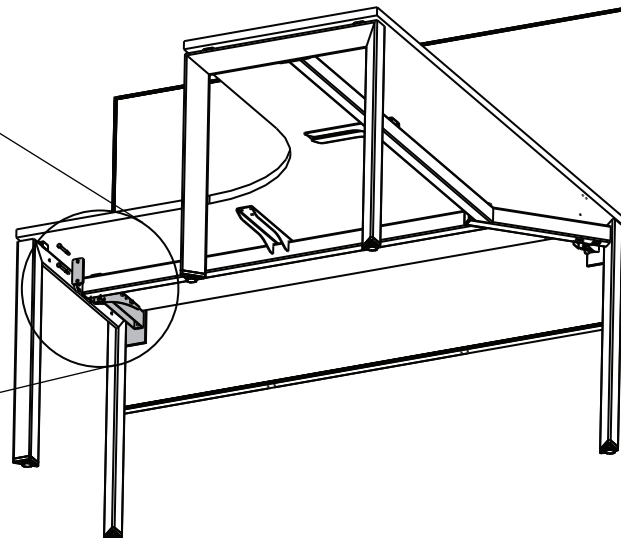
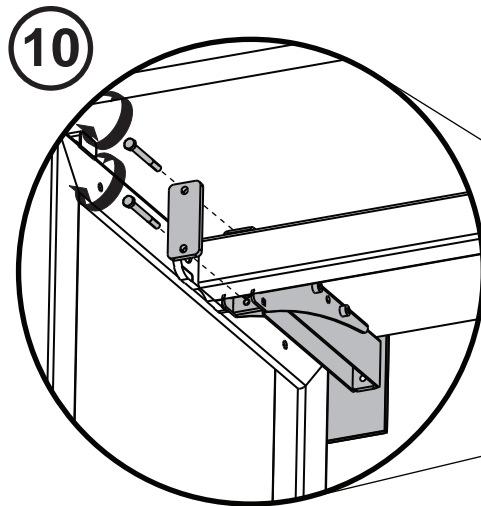
8. Remove the support bracket shown.

9. Position the FE-3 screen to the table.
The screen bracket should be attached to the
understructure of the table.
Make sure that the side of the screen is flush
with the side of the table top.



FE-3 Screen (Left Hand) + Table

10. Tighten two M6 screws to the Straight Bracket through the rectangular plate. Make sure it is tightly secured.
11. Slide rectangular plate 1 into the Corner Screen Bracket. Make sure the holes are aligned. Tighten two M6 screws to the Straight Bracket through rectangular plate 2. Make sure it is tightly secured.



FE-3 Screen (Left Hand) + Table

12. View of the completed installation of FE-3 Screen to a FrameOne 90 degree table.

