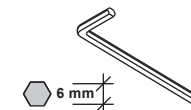


Required Tools



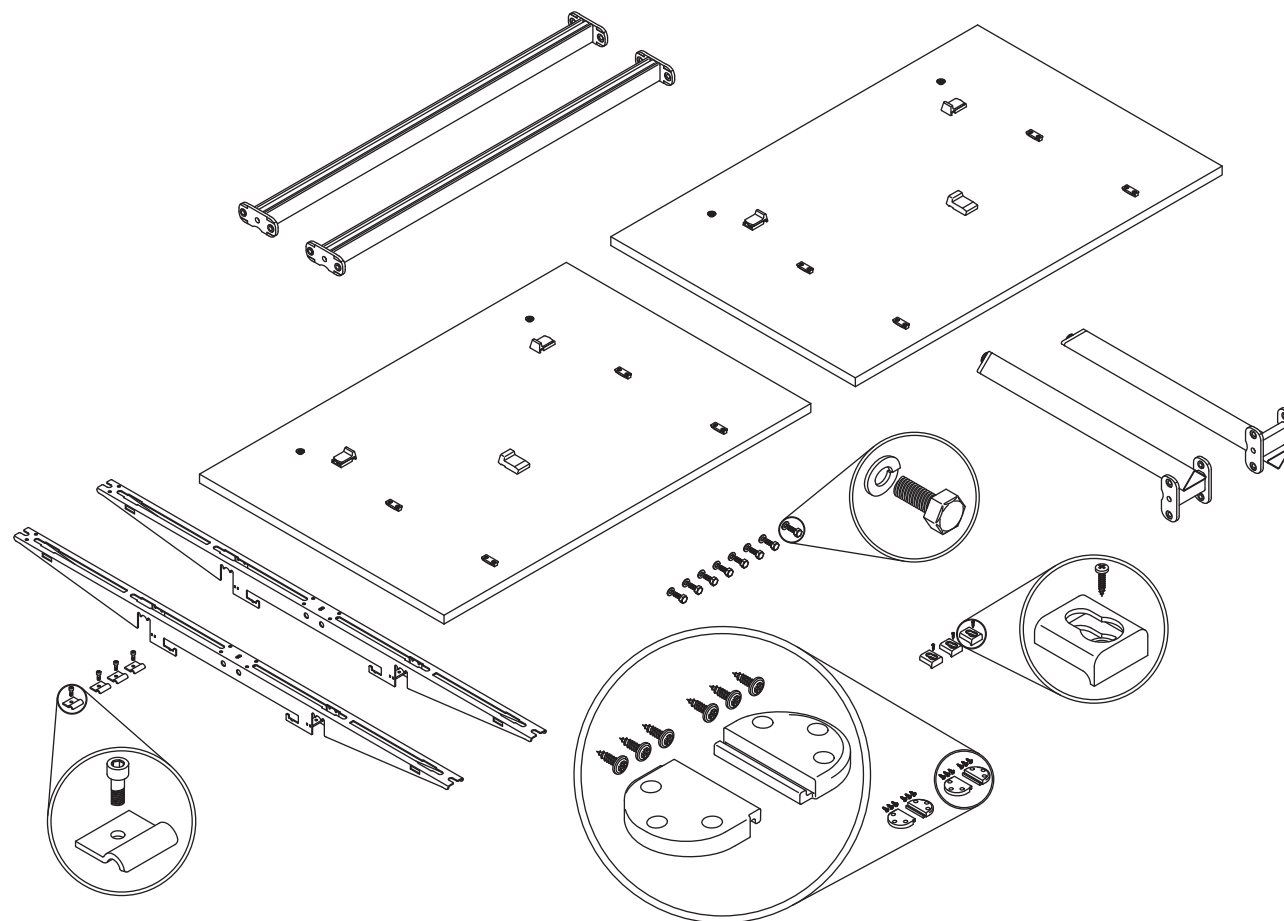
1. Allen Key



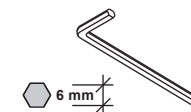
2. Spanner



3. 2 persons are needed



Required Tools



1. Allen Key



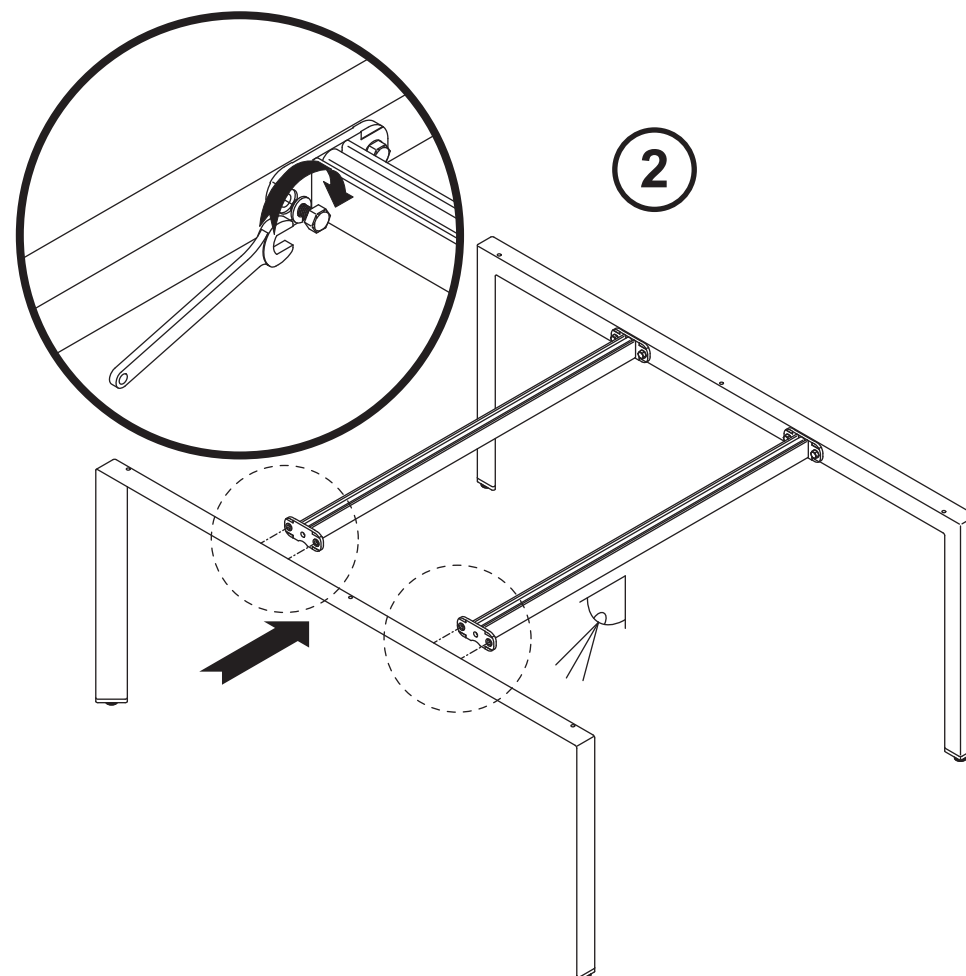
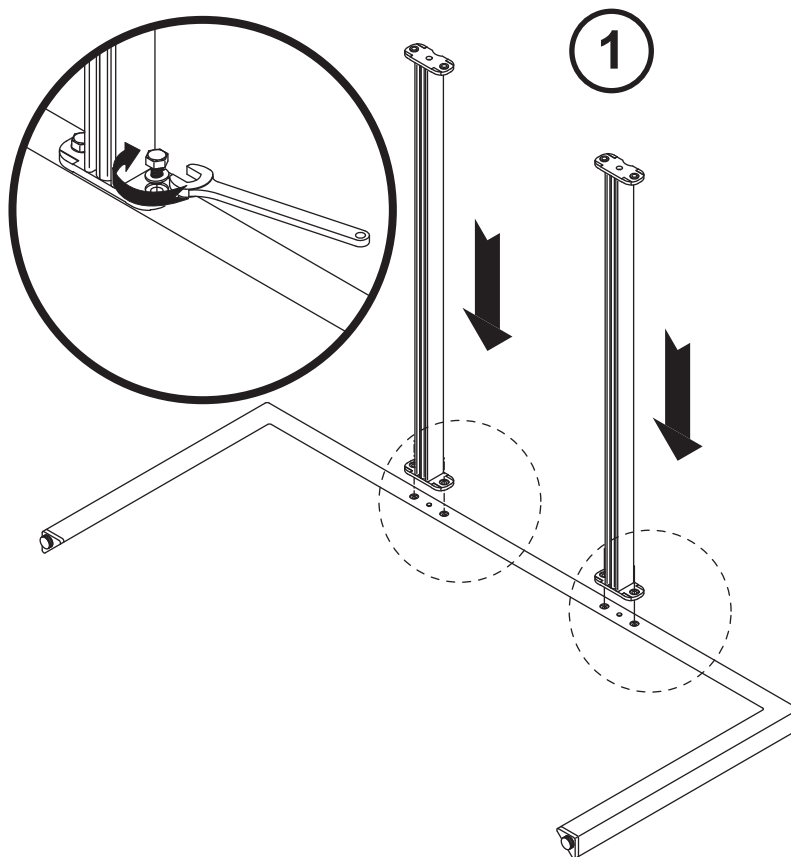
2. Spanner



3. 2 persons are needed

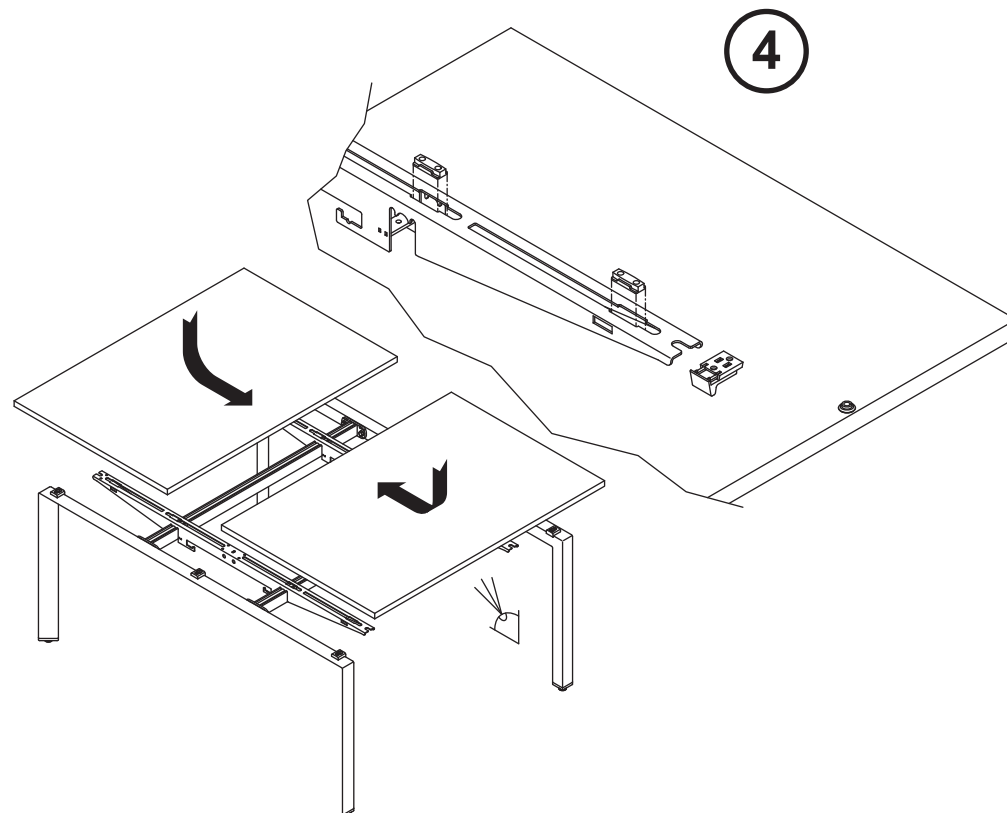
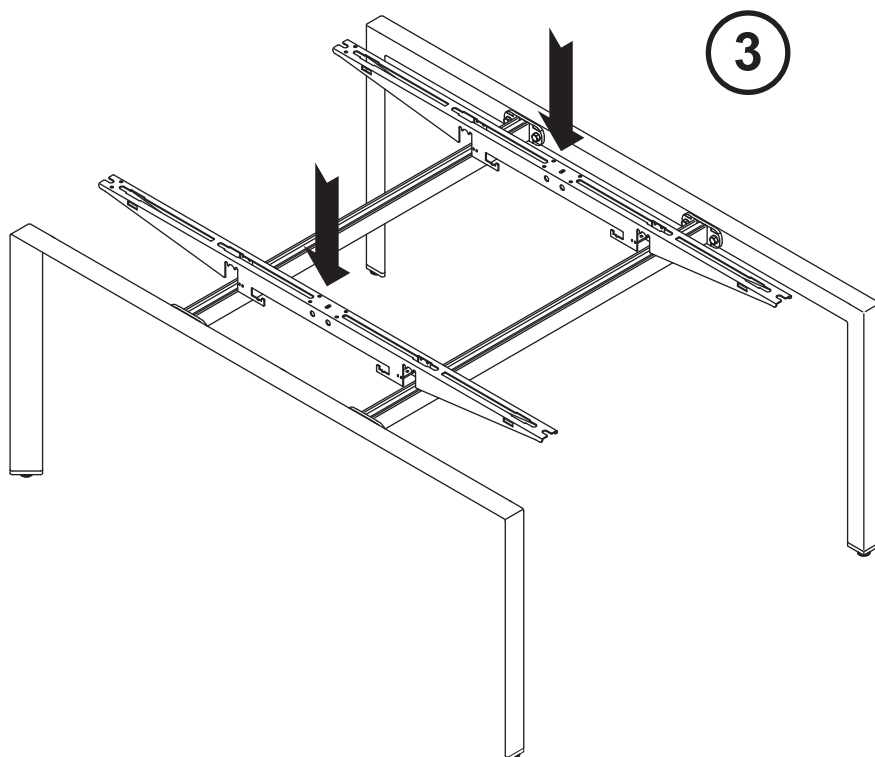
Basic Single Structure Desk

1. Screw the beams to the end frame, 15Nm.
2. Screw the beams to the second end frame, 15Nm.



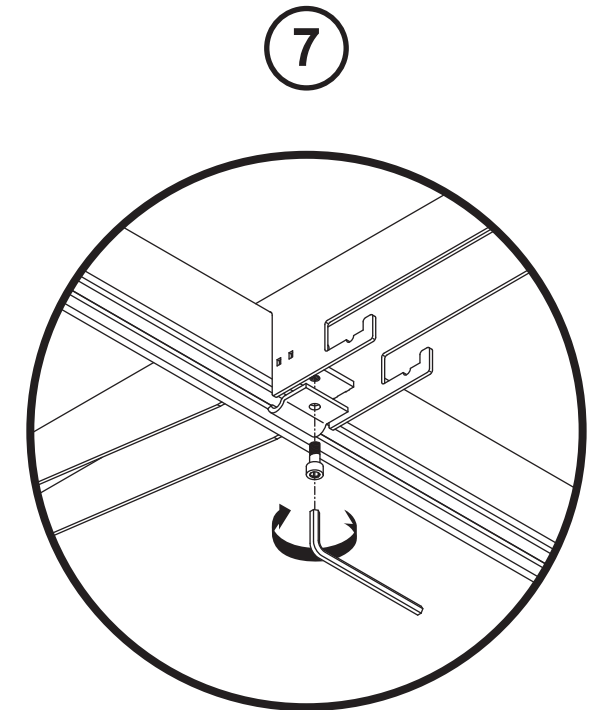
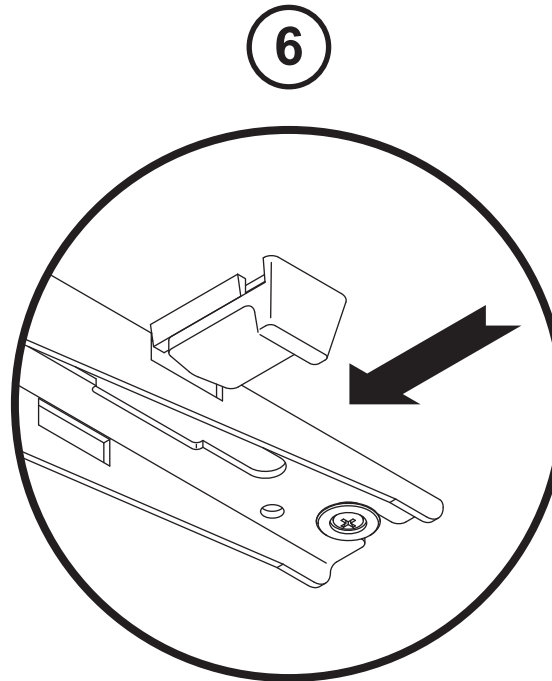
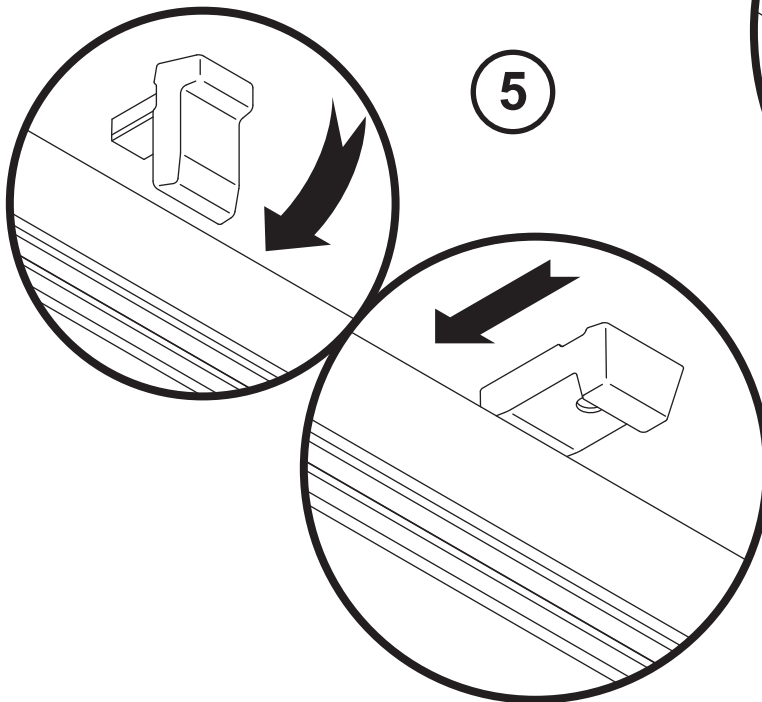
Basic Single Structure Desk

3. Slot the sliding desk top glide onto the beams.
4. Slot the sliding tops into the sliding desk top glide.



Basic Single Structure Desk

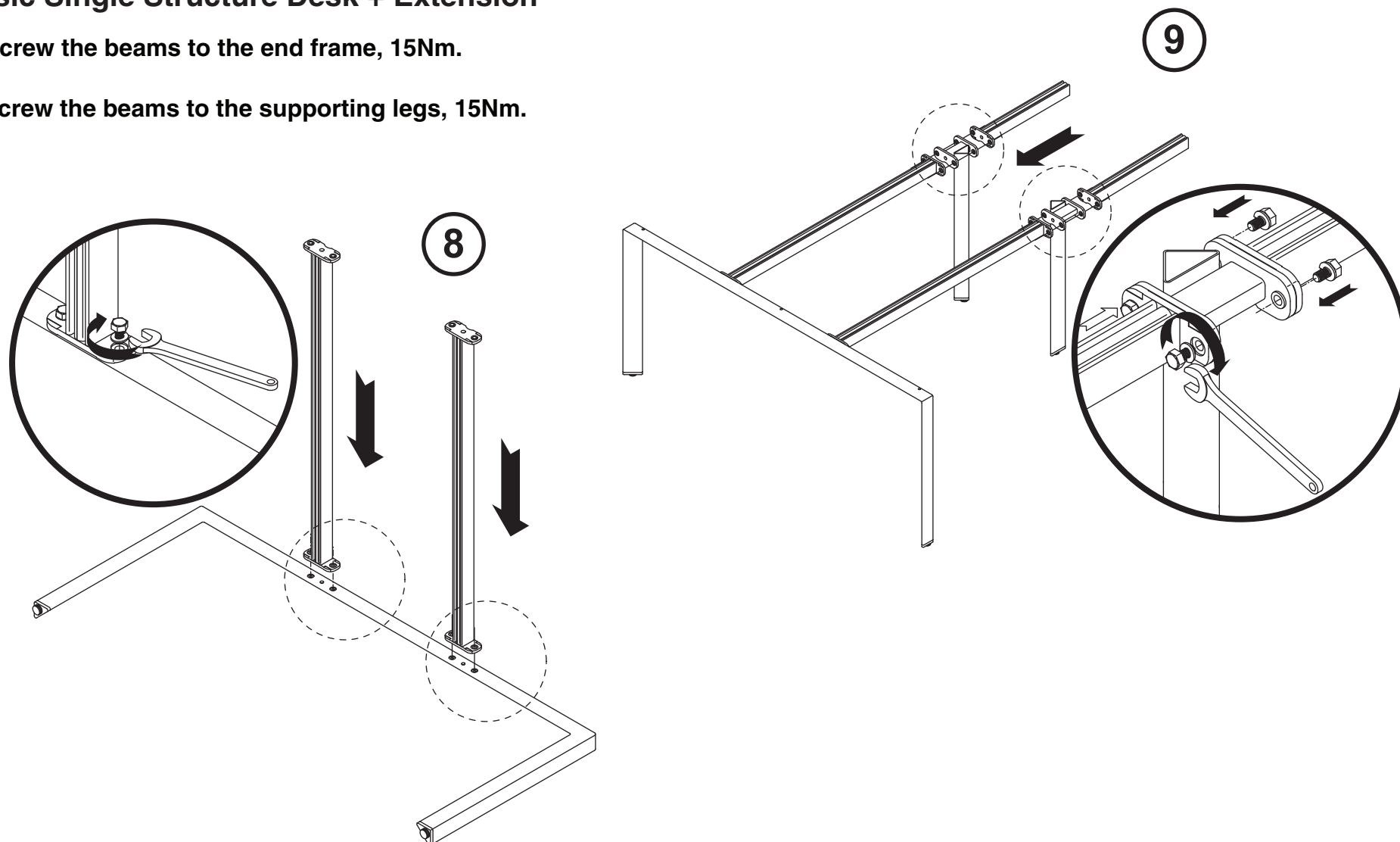
5. Fix the sliding tops in place to do this, undo the clamp protection.
6. Close the sliding top lock.
7. Screw the sliding top runners to the clamping plate, 5Nm.



Basic Single Structure Desk + Extension

8. Screw the beams to the end frame, 15Nm.

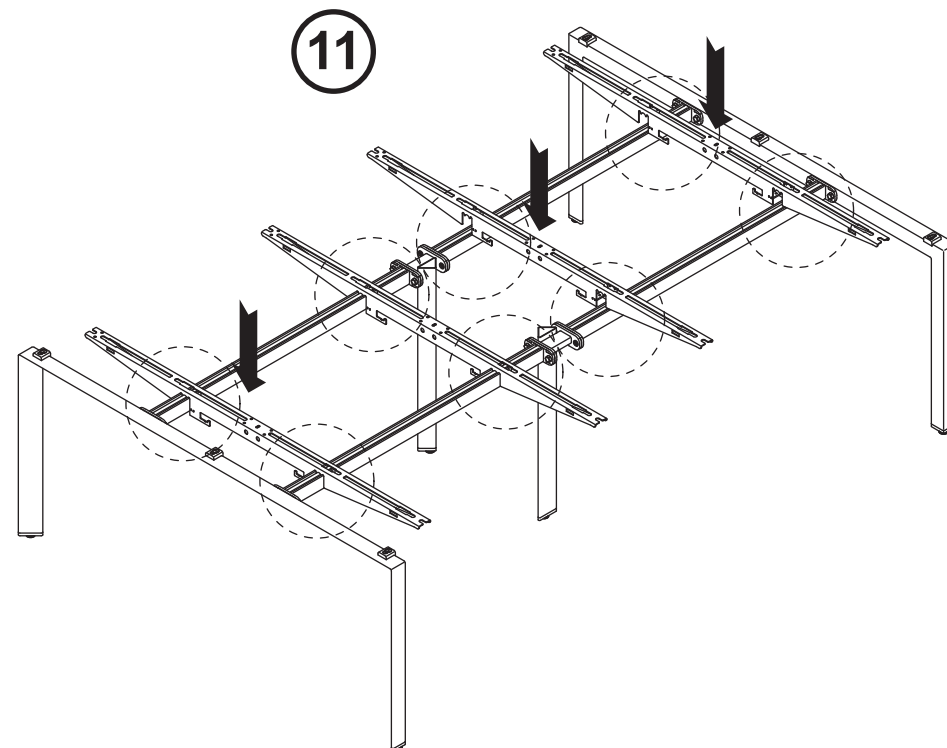
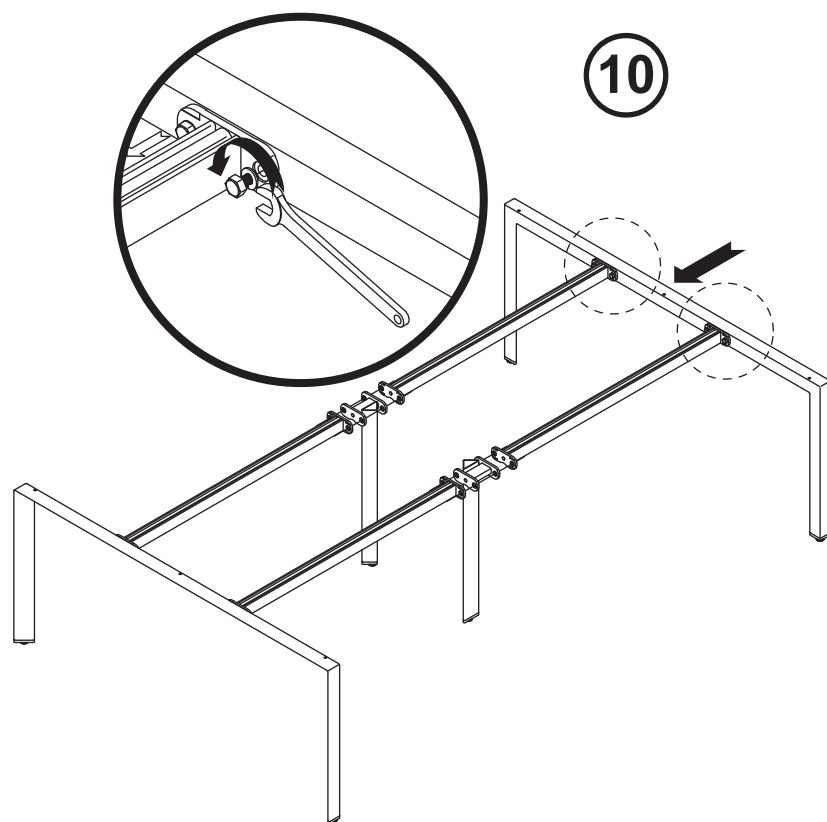
9. Screw the beams to the supporting legs, 15Nm.



Basic Single Structure Desk + Extension

10. Screw the beams to the second end frame, 15Nm.

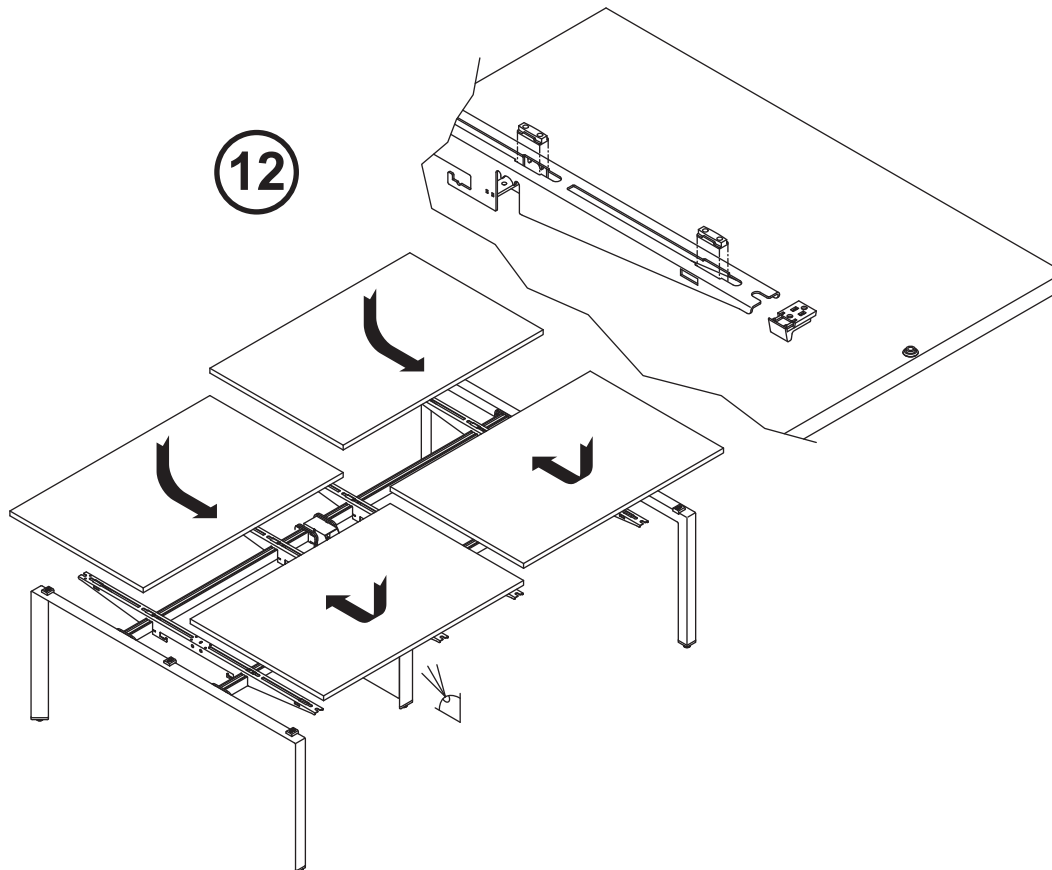
11. Slot the sliding desk top glide onto the beams.



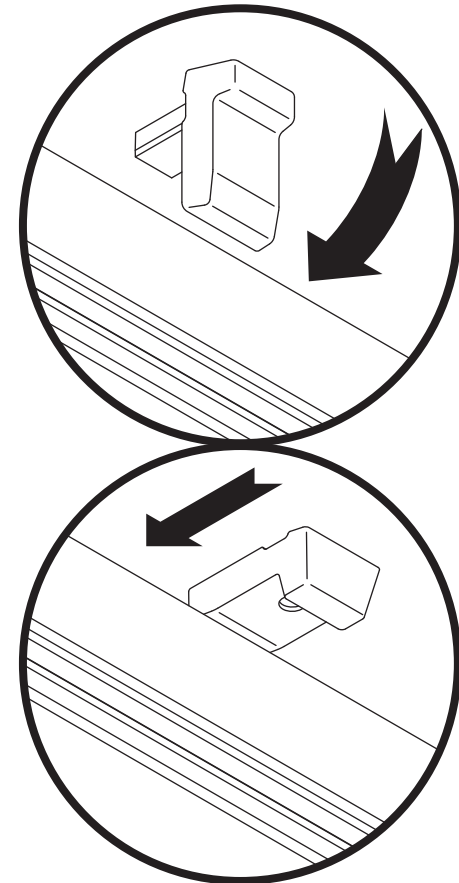
Basic Single Structure Desk + Extension

12. Slot the sliding tops into the sliding desk top glide.

13. Fix the sliding tops in place to do this, undo the clamp protection.



13



Basic Single Structure Desk + Extension

14. Close the sliding top lock.

15. Screw the sliding desk top glide to the clamping plate, 5Nm.

