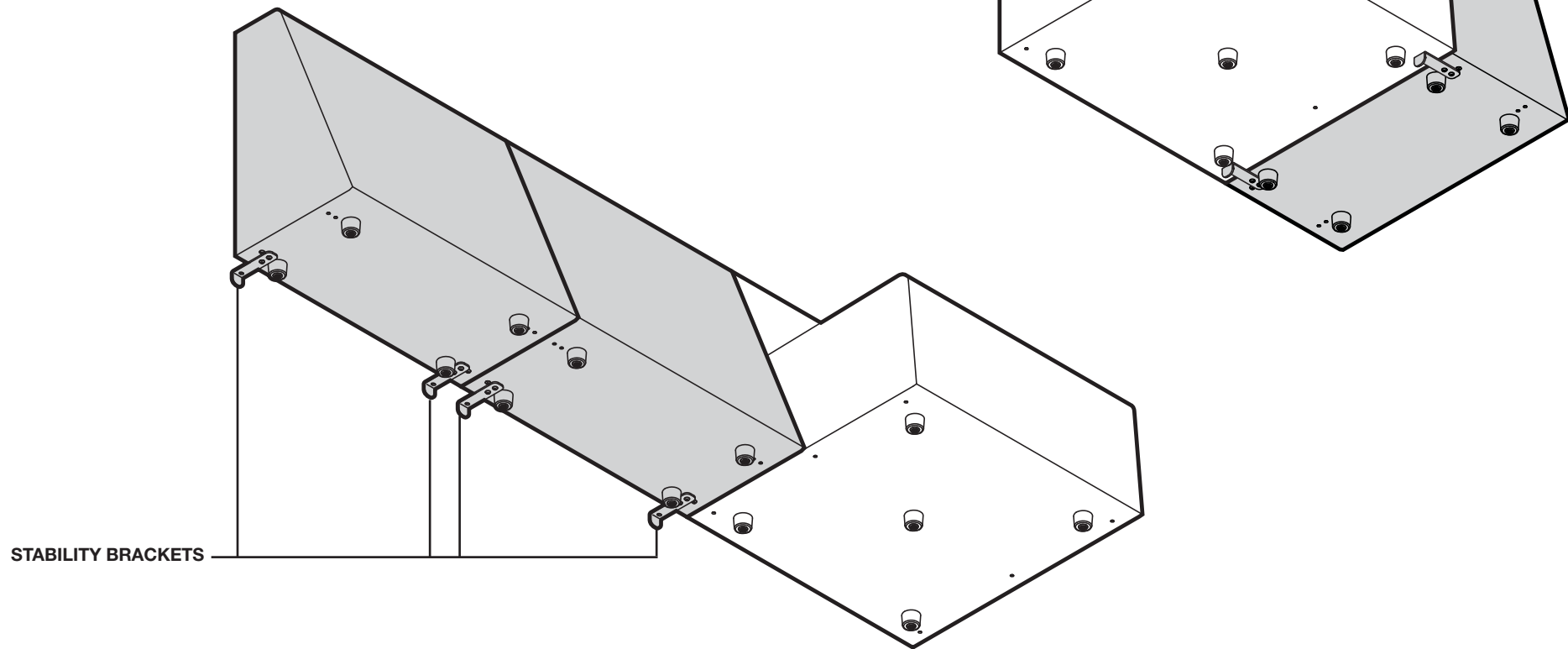


Independent wedges and lounges may be positioned into any configuration without moving or removing the stability bracket(s) on the wedge.

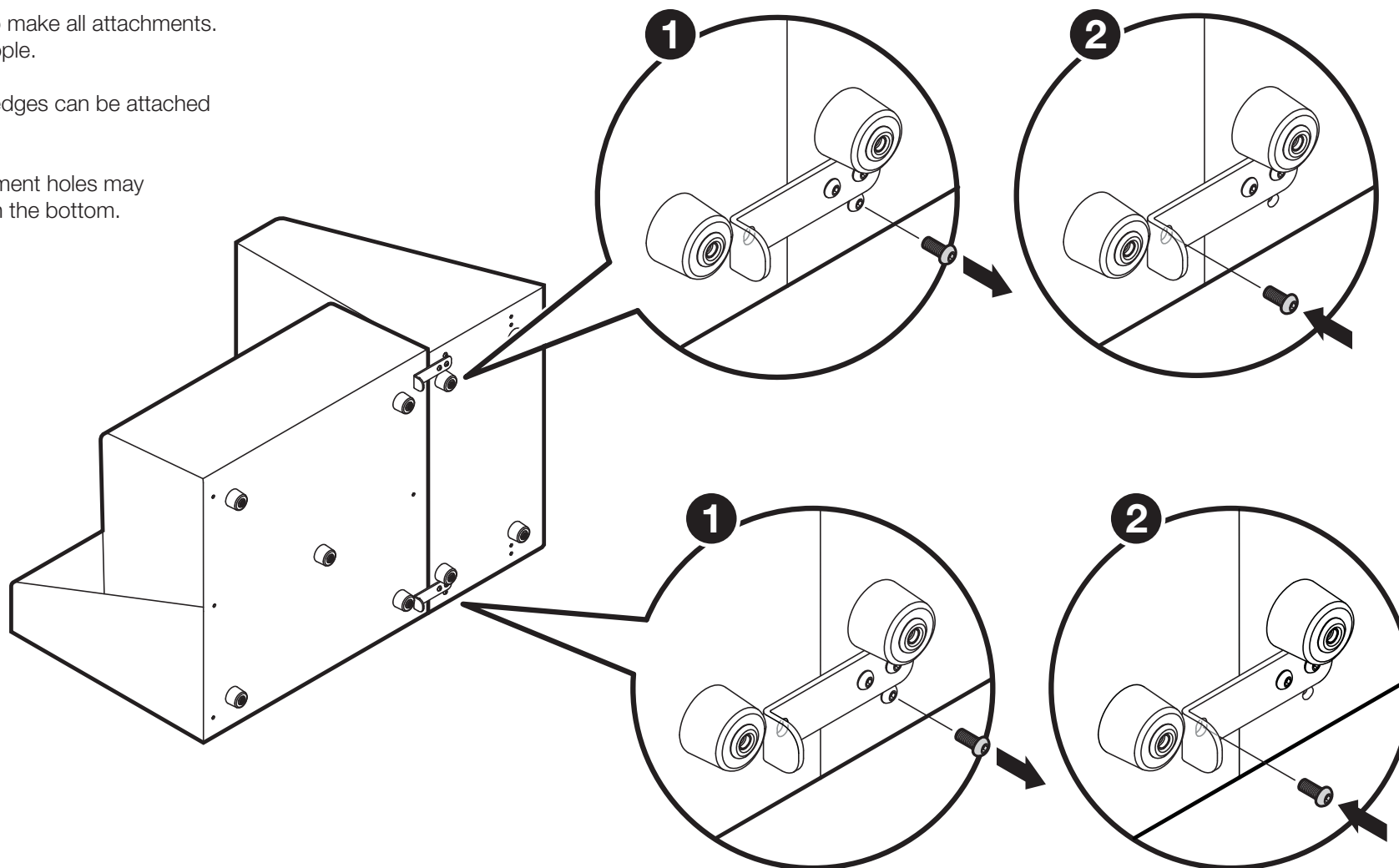


### ATTACH WEDGE AS ARM

Tip lounge on its back to make all attachments.  
Recommend two (2) people.

No more than two (2) wedges can be attached  
to a single lounge.

Access threaded attachment holes may  
required cutting fabric on the bottom.



### ATTACH WEDGE END-TO-END

Tip lounge on its back to make all attachments.  
Recommend two (2) people.

**CAUTION :** ALL brackets MUST be attached for stability

