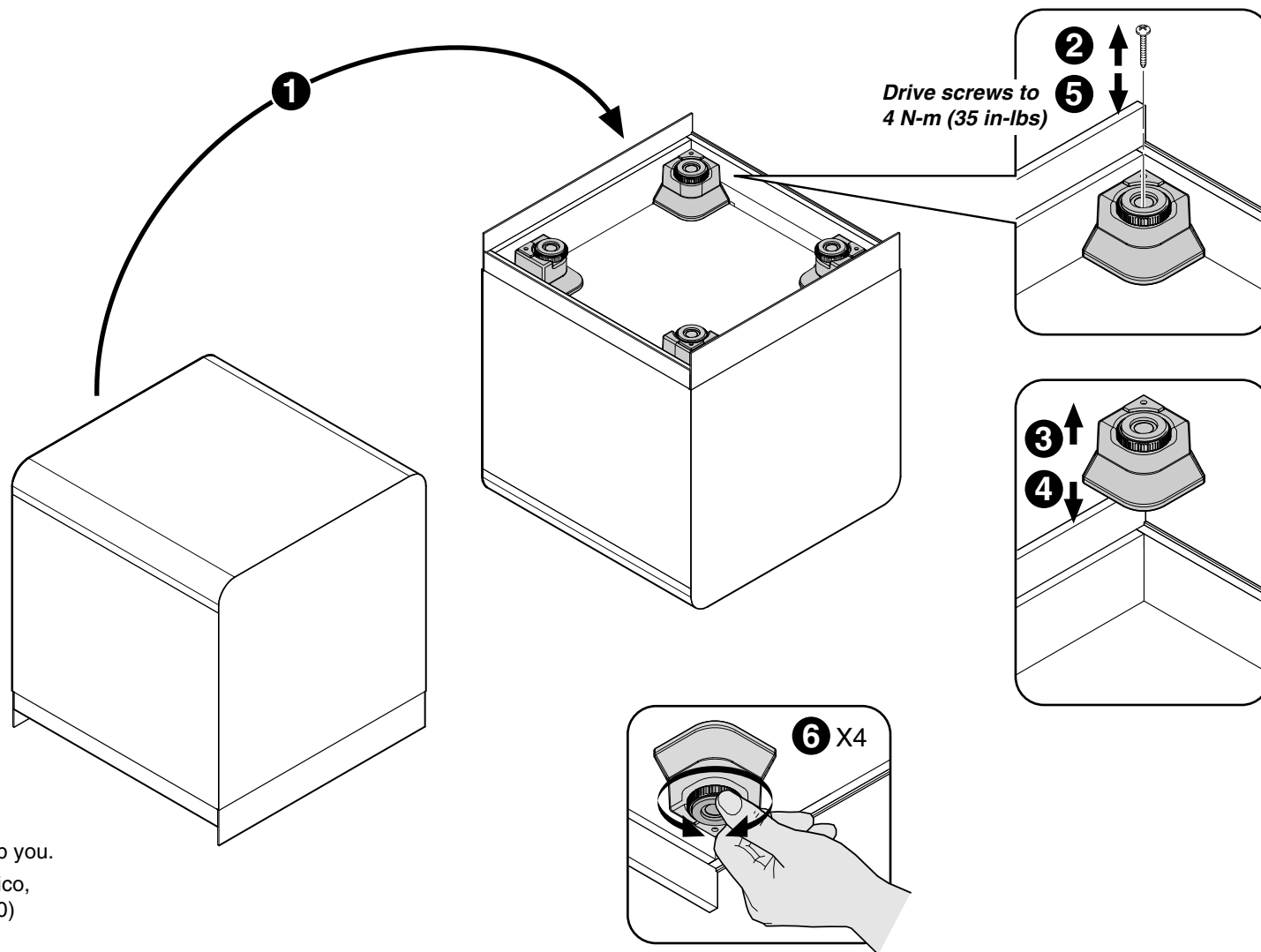


### Glide Replacement

1. Carefully tip cube over to have access to the bottom.
2. Remove the screw inside each of the (4) glides.
3. Remove existing glides.
4. Place (4) new glides in corners.
5. Secure glides with (4) new screws.
6. Carefully upright cube and adjust glide height if necessary.



If you have a problem, question, or request, call your local dealer, or Steelcase Line 1 at **888.STEELCASE** (888.783.3522) for immediate action by people who want to help you.

(Outside the U.S.A., Canada, Mexico, Puerto Rico, and the U.S. Virgin Islands, call: 1.616.247.2500)  
Or visit our website: [www.steelcase.com](http://www.steelcase.com)

© 2017 Steelcase Inc.  
Grand Rapids, MI 49501  
U.S.A.

Printed in U.S.A.