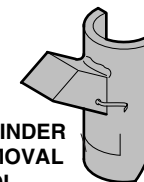


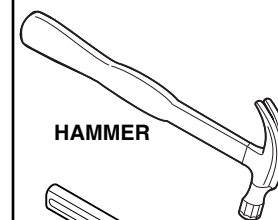
480 Node® 5-Arm Base Chair (with or without Worksurface) and Stool for Customer Service Shim Installation



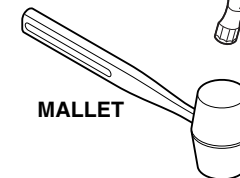
**CYLINDER
REMOVAL
TOOL**



HAMMER

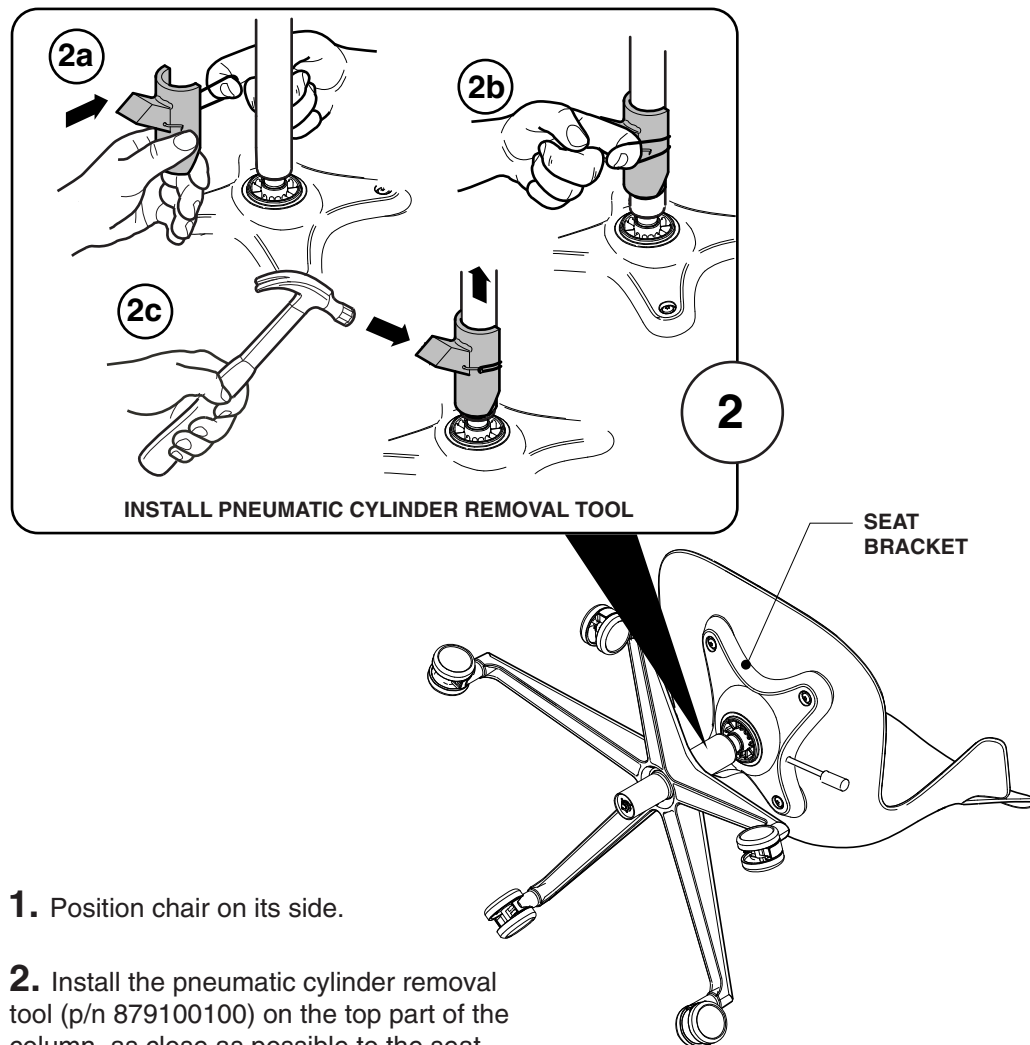


MALLET



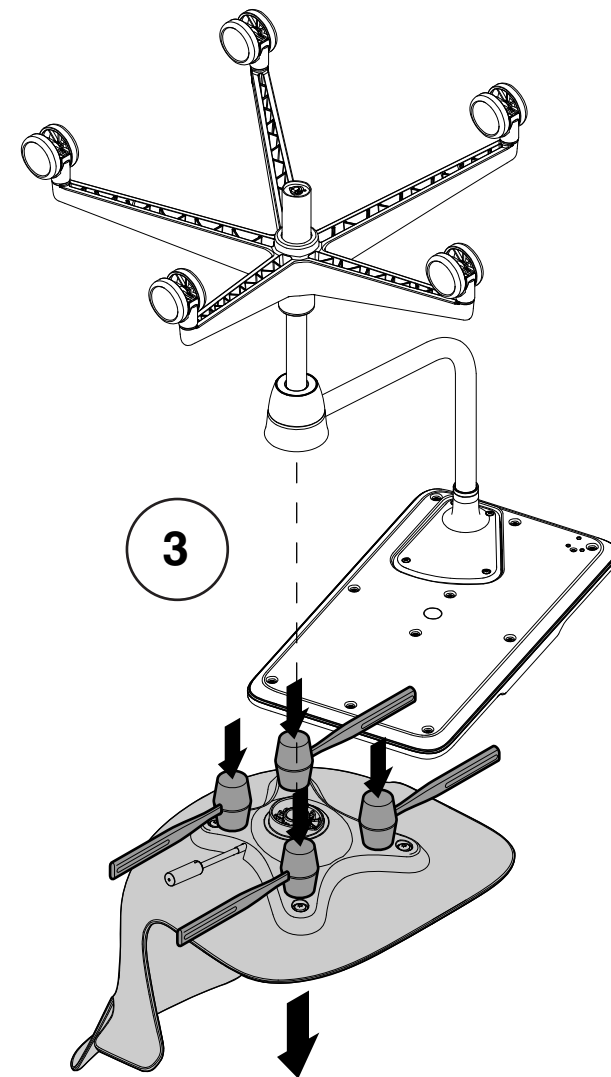
Removing Seat Shell

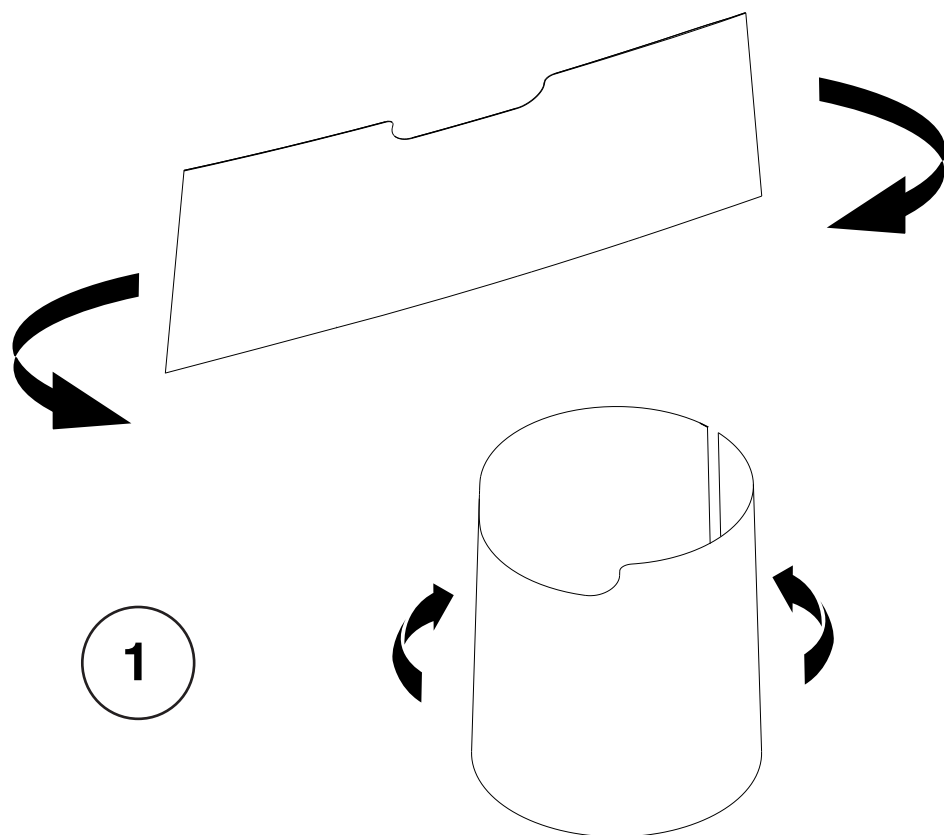
NOTE: Refer to step 3
for worksurface version.



1. Position chair on its side.

2. Install the pneumatic cylinder removal tool (p/n 879100100) on the top part of the column, as close as possible to the seat bracket (2a & 2b). Give the removal tool several solid hits on the flat area with a hammer (2c) while pulling forward on the chair base.



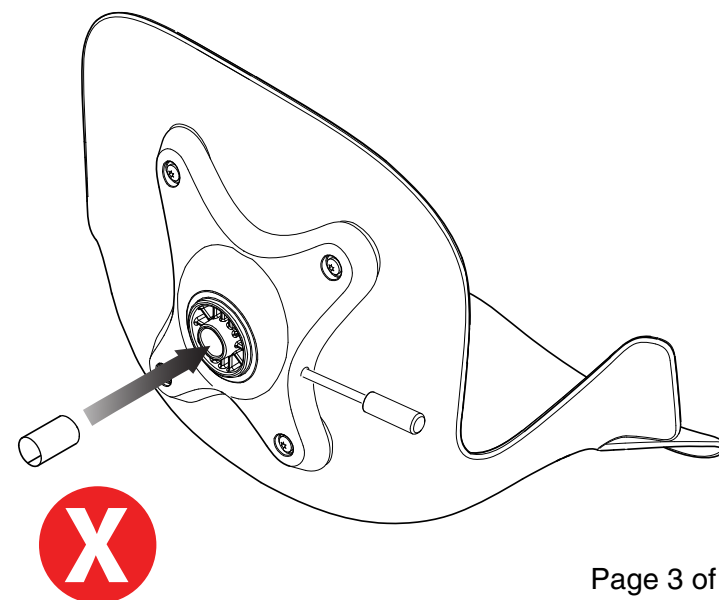
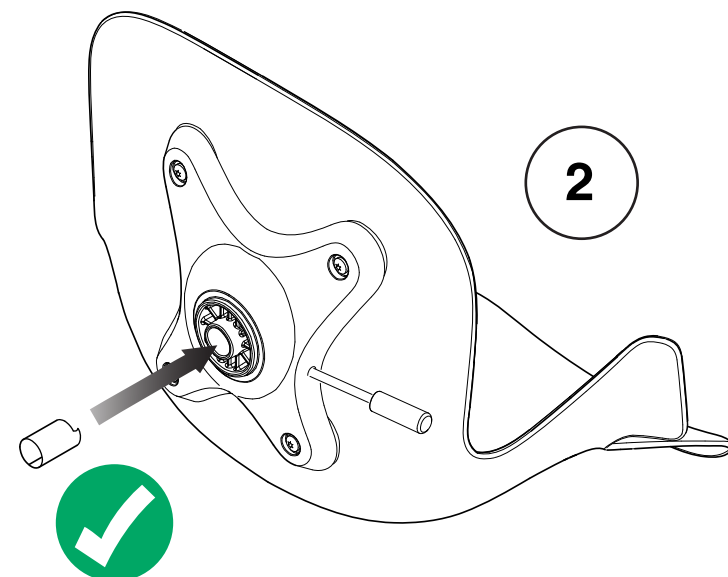


1. Roll shim into a cone

2. Insert shim into seat bracket

Align notch in shim with feature in seat bracket

NOTE: Notch in shim should face front of seat



Reinstalling Seat (with or without Worksurface)

NOTE: Base removed from illustration for clarity.

Worksurface must rest in this area only.

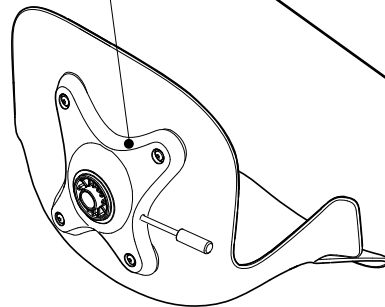
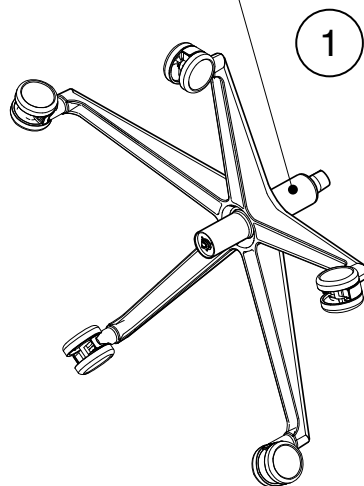
If worksurface is resting outside this area, the chair will not seat properly.

WORKSURFACE

METAL COLLAR

PNEUMATIC CYLINDER

SEAT BRACKET



1. Place seat onto top of pneumatic cylinder.
Turn chair upright and sit in chair to seat the bracket onto the cylinder.

