

T-20 TORX
T-40 TORX

If you have a problem, question, or request, call
your local dealer, or Steelcase Line 1 at
888.STEELCASE (888.783.3522)
for immediate action by people who want to help you.

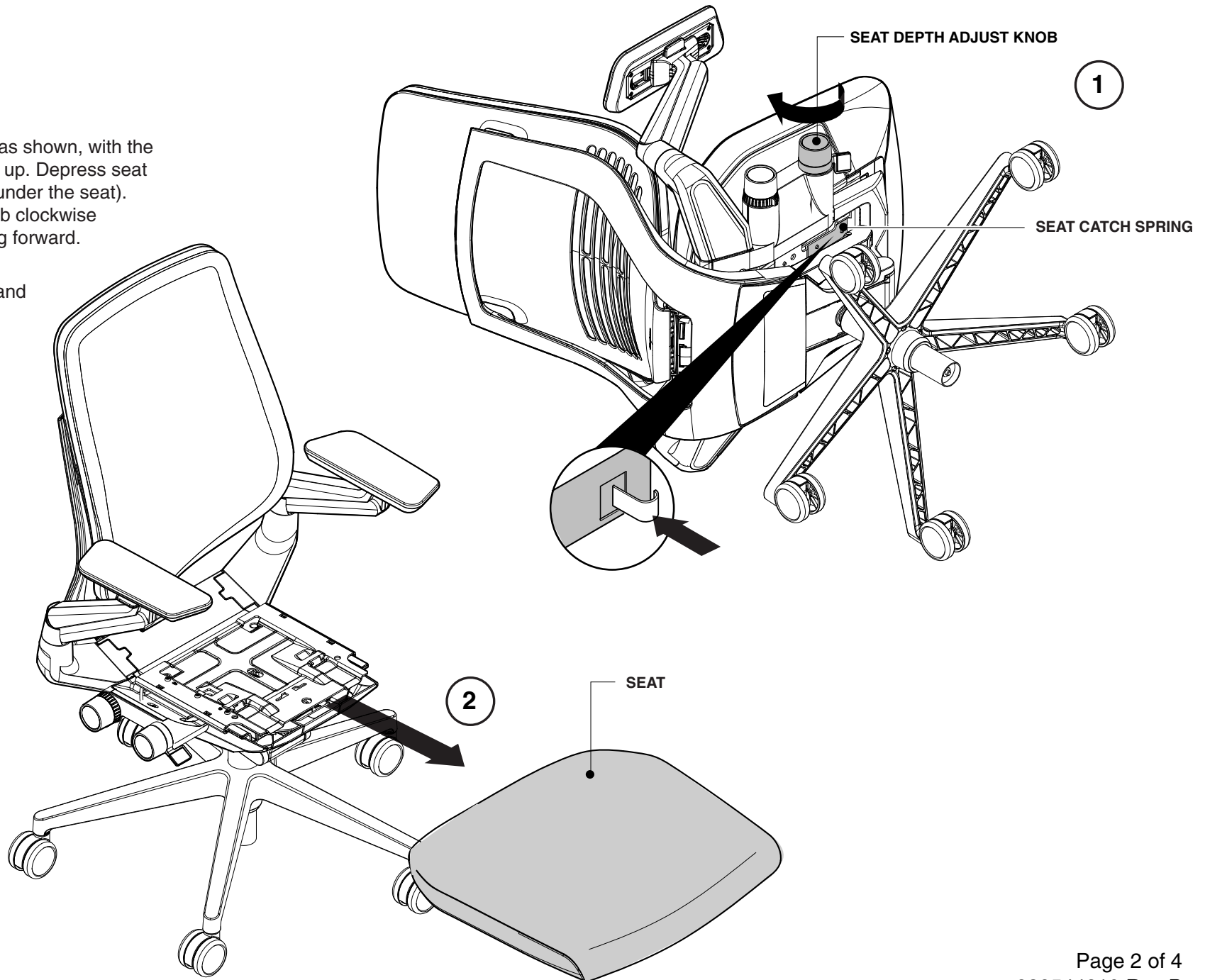
(Outside the U.S.A., Canada, Mexico, Puerto Rico,
and the U.S. Virgin Islands, call: 1.616.247.2500)
Or visit our website: www.steelcase.com

© 2013 Steelcase Inc.
Grand Rapids, MI 49501
U.S.A.

Printed in U.S.A.

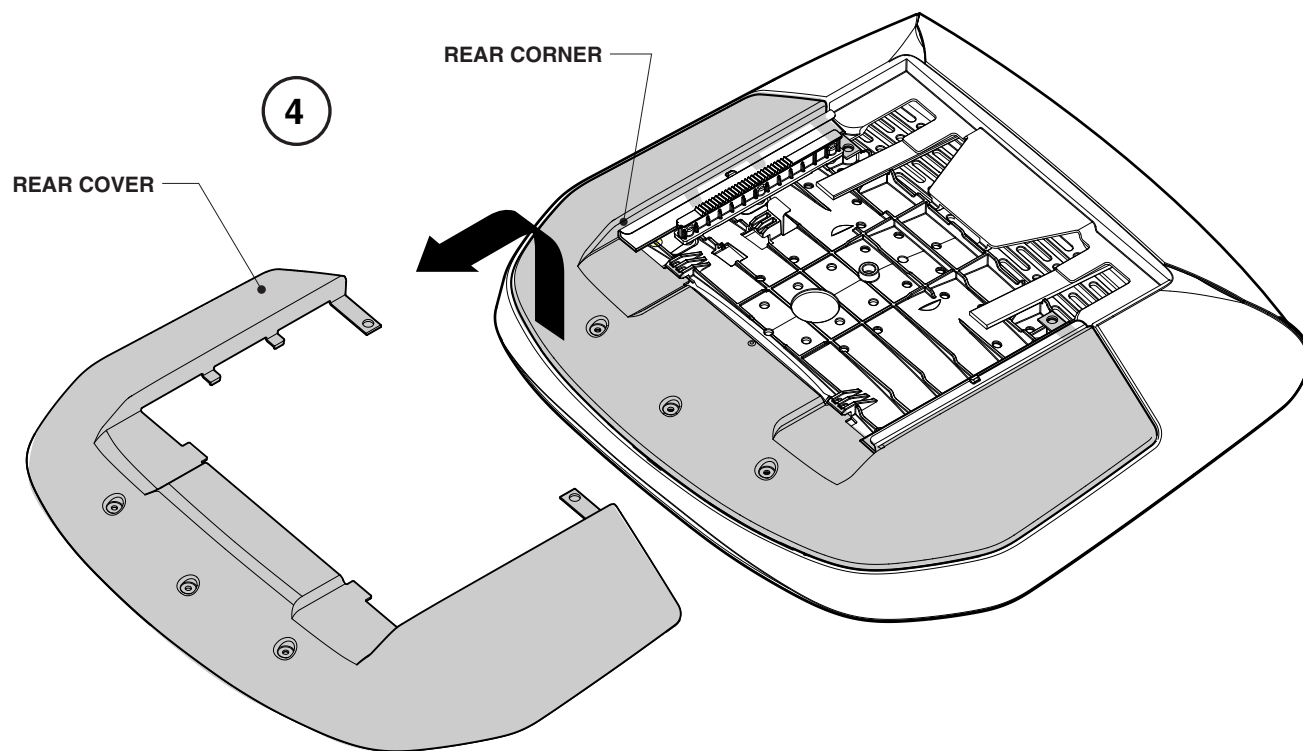
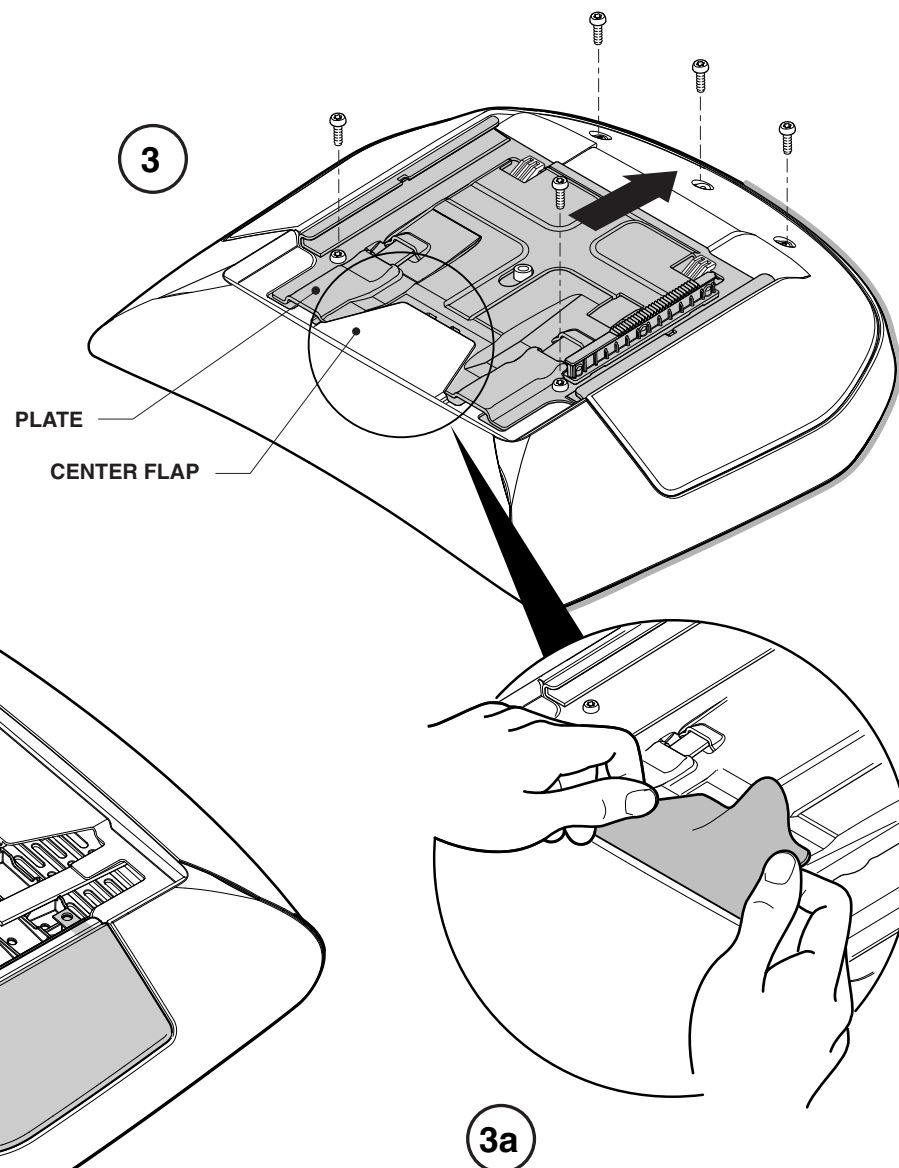
1. Lay chair on side as shown, with the control knobs pointing up. Depress seat catch spring (located under the seat). Rotate seat depth knob clockwise until seat stops moving forward.

2. Position chair up and pull seat off.



3. Turn seat over to access bottom. Pinch flexible center flap together to unhook (3a). Remove two, (2) front screws using a Torx T-40 driver. Remove three, (3) rear screws using a Torx T-20 driver. Slide plate towards the back to remove.

4. Remove rear cover by pulling up and away at rear corner



5. Un-hook upholstery cover from inner seat shell all around perimeter. Peel off seat cover.

6. Reverse previous 3 steps to install new upholstery cover.

NOTE: When reinstalling plate, springs must feed through slots in plate. Tuck small flaps between plate and springs.

7. To reinstall seat onto chair, slide seat on from the front until it stops. Turn seat depth adjust knob counter clock-wise until the seat stops moving backwards.

