

**Steelcase**

## **Table Tent**

Table Tent provides personal privacy when it's time to focus. With shielding on three sides and overhead, it quickly converts any desk, bench or table into a safe and private place to work. Table Tent is able to accommodate a range of technology and with no clips or clamps it is easy to set up and easy to move.



FEATURES



SIMPLE ASSEMBLY

Fiberglass rods insert into reinforced fabric pockets for quick and easy assembly.



CONNECTION FREE

Sits freely on any worksurface without clips or clamps and is connection free, causing zero interference with height-adjustable desks.



TECHNOLOGY INTEGRATION

The roomy enclosure of Table Tent allows it to integrate easily with monitor arms, power and docking stations.



NESTING

When not in use, Table Tents nest together neatly for convenient storage.

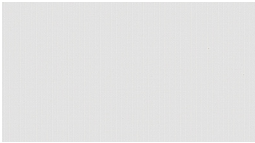


TWO SIZES

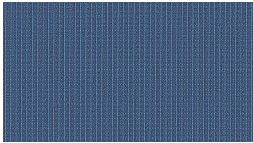
Available in two sizes, Table Tent fits on a wide variety of desk and table worksurfaces.

SURFACE MATERIALS OPTIONS

FABRIC  
*(Ascent)*



Arctic White  
TE04



Indigo  
TE05



Olivine  
TE06



Rose Quartz  
TE07

**Top Panel**  
Ascent Arctic White TE04

**Outer Trim**  
Fabric is a color match to 6059 Sterling Dark Solid

**Fiberglass Rods**  
Milk

DIMENSIONS

Available Sizes	Width	Depth	Height
Small	1041mm	572mm	762mm
Large	1346mm	686mm	838mm