

Steelcase®

Series 2

Steelcase

3	Meet Steelcase Series 2
4	Design Story
7	Active Sitting
12	Sustainability
14	Specification
18	The Steelcase Seating Difference

Meet Steelcase Series™ 2



Designed with Intent



The goal with any of our products is simple complexity. With Air LiveBack technology, we used the minimal amount of parts possible with the simplest geometry to create this dynamic flexibility. The way we achieve these very complex goals are virtually unnoticeable.

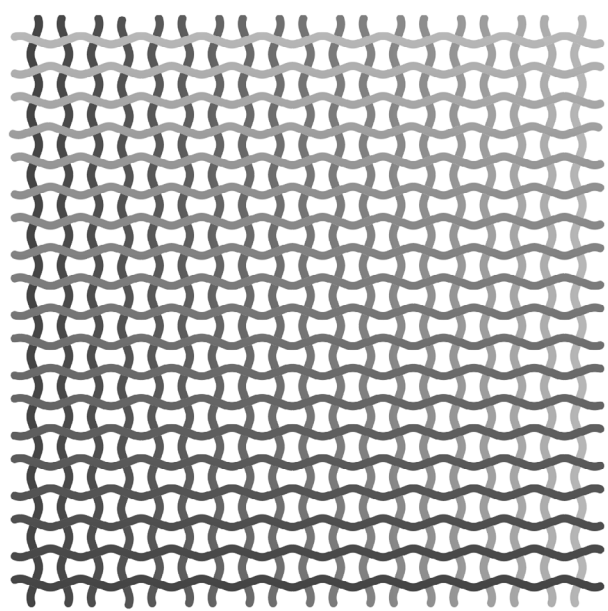
Following on from the success of Steelcase Series™ 1, we saw the need to extend the attainable Series family with a chair that had even higher performance and an even more extensive style choice (whilst maintaining a simple lightweight profile).

The result: Steelcase Series™ 2.

Series 2's started in 2017, when our engineers began experimenting with composite polypropylene – a light-weight material that offers both flexibility and durability. This material presented an opportunity to innovate our patented LiveBack® technology whilst reducing the materials and parts required to offer a high-performance support.



Air LiveBack®



"After many iterations, we found inspiration in a brick pattern that worked perfectly. This beautiful geometric pattern emerged which flexes in all directions, encouraging movement and providing the right amount of support for posture changes."

Steelcase Series 2 Principal Designer

Our designers aimed to simplify the LiveBack technology for the Series chair by using only one material to create a supportive chair back. They found that composite polypropylene was flexible, durable, and could be molded into a seamless system that mirrored the key properties of the original LiveBack. However, the challenge was figuring out how to create this complex support system using just one material.

A Chair for Everyone

Series 2 works anywhere. Its sleek and slim profile, combined with a breathable, transparent, and airy backrest design, makes it a perfect fit for any home interior. You can choose from a variety of back finishes, including standard or quilted upholstery, a high tech 3D Micro Knit or opt for the minimal exposed geometric back design.

13
3D MicroKnits

13
Plastic

100
Colours



Equipped with Air LiveBack® and a Weight Activated Mechanism, Series 2 is designed to support different postures and promote active movement, enhancing user comfort during the workday by improving circulation and alleviating tension, aches, and pains commonly associated with non-ergonomic seating.



Weight Activated Mechanism



The seat's integrated **Weight-Activated Mechanism** keeps your body in an ergonomic posture regardless of your seating position, height or size. The smart mechanism synchronizes the seat and back, intuitively adjusting the angle of the seat to give you the perfect amount of support.

The back tension can be quickly adjusted with the **Recline Control**, allowing users dial up (or down) their comfort level. The back tension can be adjust between three comfort settings:



RECLINE CONTROL

The grooved control dial allows the user to quickly switch between advanced locking and fill weight activated recline.

4D Arms



Quick height, width, dept and pivot adjustments give you comfort, and keep you connected, in every dimension. Attached to the seat mechanism, the arms also remain parallel to the worksurface at every angle of recline.

Engineered for Comfort

Series 2 works hard to make you comfortable, without you doing a thing. Responsive and intuitive adjustments fine-tune comfort and for a broad range of people.

Adaptive seat bolstering

Seat cushion conforms to your shape to create instant comfort.

Flexible seat edge

Makes room for movement and long-term comfort.

Adjustable Seat Depths

Seat depth adjusts from 393mm 457mm.

Lumber Support

Standard height-adjustable lumbar support on upholstered or 3D microknit options.



Enhanced Choice



RETROFITTABLE HEADREST

Headrest adjusts 31/4" vertically to support the head and neck of the user in both upright and recline postures.

RETROFITTABLE COAT HANGER

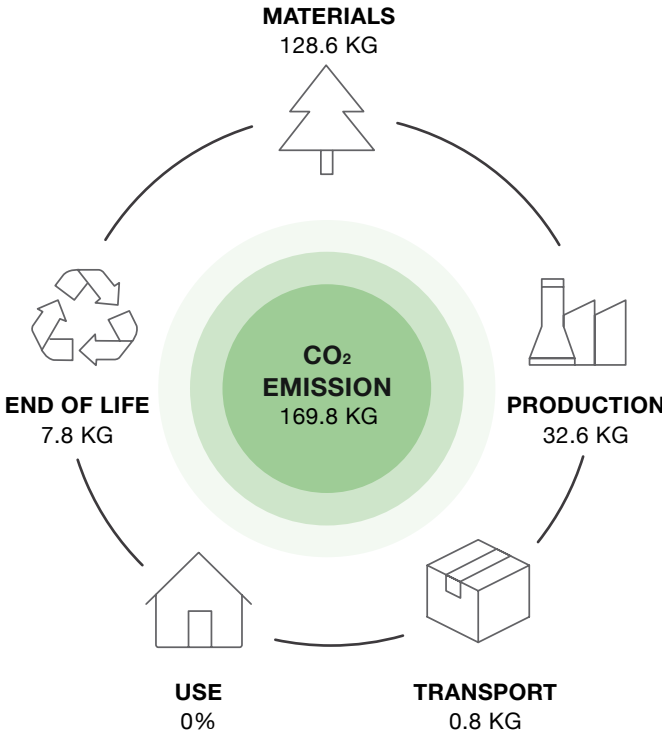
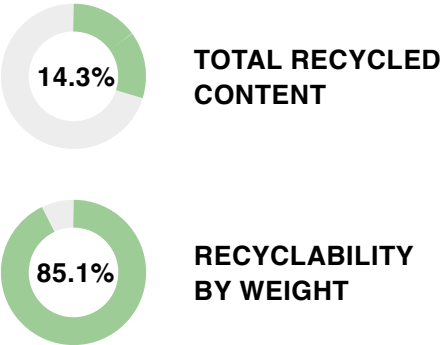
Optional coat hanger



Life Cycle Analysis



Series 2 is up to 85% recyclable by weight and was intentionally designed to be easily disassembled into manageable material components within 5 minutes, using ordinary hand tools.



TRANSPORT

Series 2 is shipped 'flat pack', ready to assemble in a couple of minutes without tools. As well as using less packaging and storage space, the shipping is incredibly efficient, reducing the environmental impact of transport.



QUICK ASSEMBLY

This declaration describes the Life Cycle Assessment of the Series 2 task chair produced for the APAC markets by Steelcase Malaysia. The assessment is performed according to the ISO standards 14040 (2006), 14044 (2006) and 14025 (2006), and BIFMA PCR for Seating: UNCPC 3811 (2020) to generate an EPD for business-to-business and business-to-consumer communication.



Product Composition

Material	Weight (kg)	Weight (%)	Resource Type
Steel	5.658	23.40	Recycled, virgin non-renewable
Aluminium	4.043	16.70	Recycled, virgin non-renewable
Polyoxymethylene (POM)	0.550	2.30	Virgin non-renewable
Polypropylene (PP)	2.870	11.90	Virgin non-renewable
Nylon (PA6 and PA66)	6.867	28.40	Recycled, virgin non-renewable
Polyurethane (PU)	3.021	12.50	Virgin non-renewable
Polyester Fabric	0.403	1.70	Virgin non-renewable
Other	0.758	3.10	
Total	24.170	100	



SERIES 2 IS ALSO PERFORMANCE TESTED AND CERTIFIED TO ALL MOST STRINGENT APAC TEST STANDARDS INCLUDING:

Declare
AFRDI Blue Tick
AFRDI Green Tick
SCS Indoor Advantage Gold – Furniture
Environmental Product Declaration (EPD) by NSF

Features + Adjustability



Work Chair
with Air Back,
Upholstery on
Seat



Work Chair with
Air Back and
3D Microknit,
Upholstery on
Seat



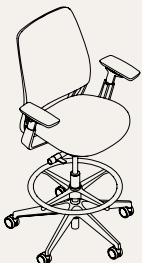
Work Chair
with Air Back,
Upholstery on
Seat and Back



Stool with Air
Back, Upholstery
on Seat



Stool with
Air Back and
3D Microknit,
Upholstery on
Seat

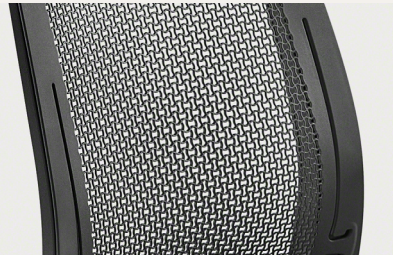


Stool with Air
Back, Upholstery
on Seat and
Back

DIMENSIONS

(Dimensions are measured with BIFMA CMD)

	Chair	Chair with Headrest
Overall Depth	489mm to 559mm	489mm to 559mm
Overall Width	415mm to 525mm	415mm to 525mm
Overall Height	965mm to 1080mm	1130mm to 1321mm
Seat Depth	356mm to 451mm	356mm to 451mm
Seat Width	483mm	483mm
Seat Height	420mm to 545mm	585mm to 780mm
Lumbar Height from Seat	216mm to 248mm	159mm to 254mm
Arm Height from Seat	179mm to 279mm	191mm to 292mm
Distance b/w Armrests	415mm to 525mm	415mm to 525mm
Armcap Pivot Range	30° inward 30° outward	30° inward 30° outward
Armcap Depth	76mm	76mm



BACK SUPPORT

Air LiveBack technology works through an innovative geometric pattern in the polypropylene back that flexes in two dimensions to encourage movement and support posture changes.



WEIGHT-ACTIVATED

Synchro Tilt Mechanism Responds to your body weight to provide the right amount of back tension as you recline.



LUMBAR SUPPORT

Standard height-adjustable lumbar support on upholstered or 3D Microknit options.



SEAT ERGONOMIC

Seat includes flexible edges and adaptive bolstering in the foam providing a pressure-free sit



RECLINE ADJUSTMENTS

Recline range includes full recline range, a boost setting and upright back lock.




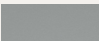
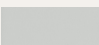
FULLY ADJUSTABLE ARMS

Standard 4-dimensional arm support adjusts to preferred height, width, depth and pivot.

Surface Materials








FRAME/BASE/ARM

Painted (Neutral)

Black	
Sterling Dark	
Seagull	

BACK

3D MICROKNIT

5064 Black		5094 Tangerine	
5065 Coconut		5095 Scarlet	
5066 Malt		5098 Blue Jay	
5090 Wasabi		5560 Aubergine	
5093 Nickel		5564 Lagoon	

BACK AND SEAT

OTTO

K601 Peacock		K606 Coral		K611 Bluestone	
K603 Olive		K607 Saffron		K612 Smoke	
K604 Grass		K609 Aubergine		K613 Iron	
K605 Honey		K610 Lagoon		K614 Ash	
				K615 Charcoal	

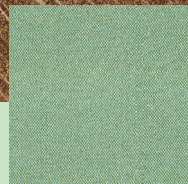
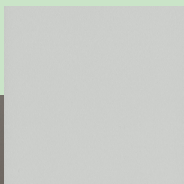
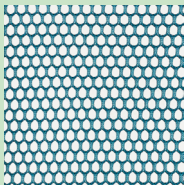
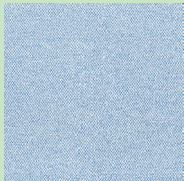
BACK AND SEAT

MEDLEY

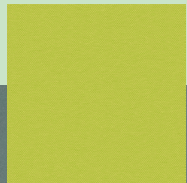
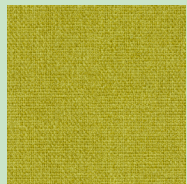
60003 Grey		63017 Orange Mix		67006 Sky Blue	
60004 Pepper		64019 Red		67053 Water Blue	
60167 Grey Brown		64125 Dark Pink		67054 Dark Green	
60999 Pepper Black		66008 Light Grey			
61002 Beige		66010 Blue			
62002 Mustard Yellow		66144 Denim			

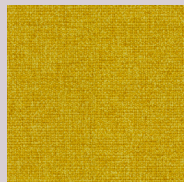
ERA

5ER0 Cobalt		5ES4 Sprout		5ET7 Ocean	
5ER2 Blue Nickel		5ES5 Blue Mint		5ET8 Stone	
5ER3 Pistachio		5ES7 Night Owl		5ET9 Slate	
5ER6 Truffle		5ET1 Peach		5EU1 Pink	
5ER7 Saffron		5ET2 Cherry		5EU2 Electric Indigo	
5ER8 Pink Lemonade		5ET3 Fresh Green		5EU3 Green Citrine	
5ER9 Onyx		5ET4 Jade		5EU4 Storm Cloud	
5ES0 Scarlet		5ET5 Sky			
5ES3 Persimmon		5ET6 Cloud			

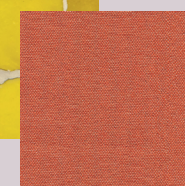
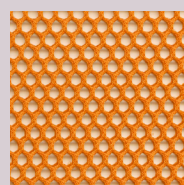
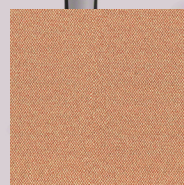
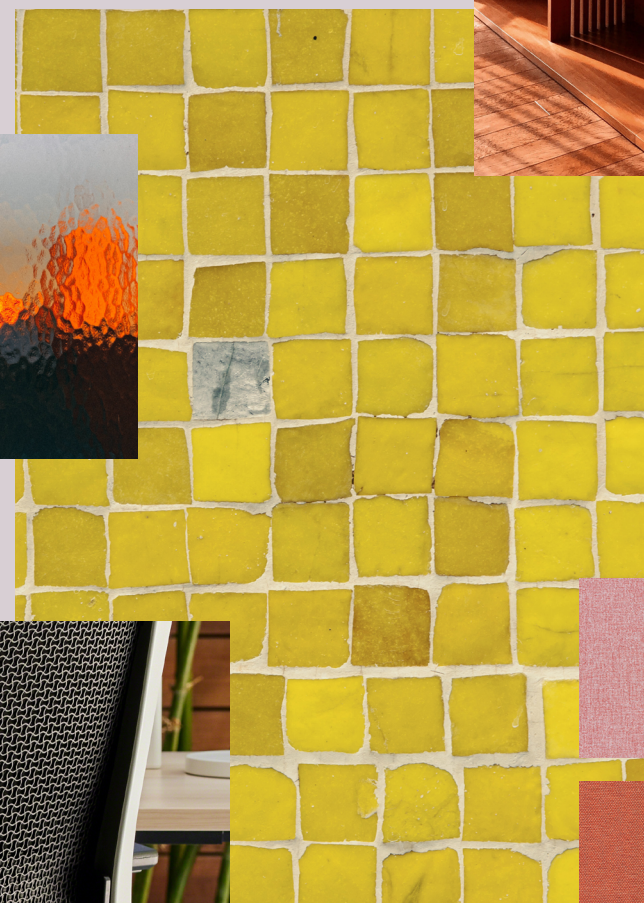
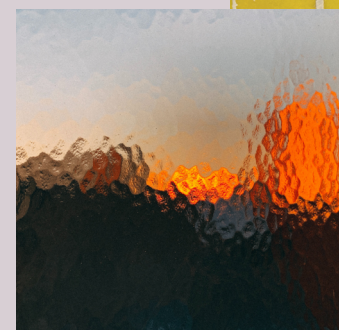


Light and expressive
colors inspired by natural
elements create a sense
of comfort at work.





Warmer neutrals and more vibrant colors inspired by biophilia create environments that intersect with nature and provide a sense of wellbeing.



The Steelcase Seating Difference

It's about more than a chair for us. It's our deep understanding of people, how they work, how they move and feel and what they need while they work. Our insights inspire new seating solutions, expressed with uncompromising quality, craftsmanship and sustainability.





AP2331E © 2023 Steelcase Inc. All rights reserved.
All specifications subject to change without notice. Trademarks used
herein are Property of Steelcase Inc. or of their respective owners.