



PolyVision®

a³ CERAMICSTEEL SANS TECHNICAL GUIDE

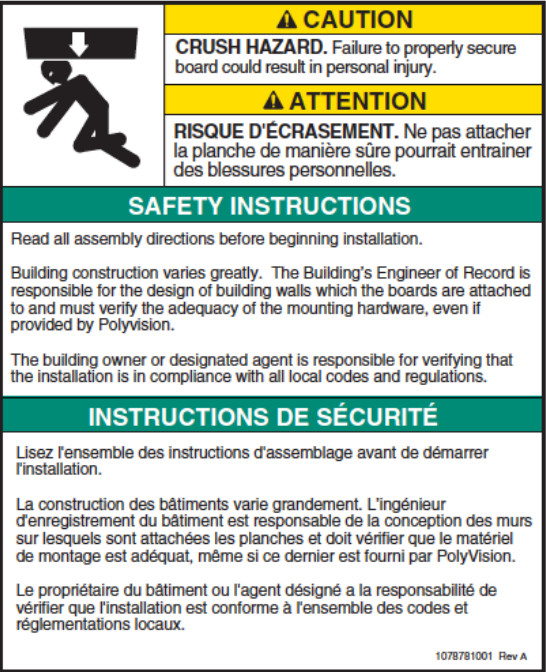
Featuring a smooth inert surface, precision cut edges sealed for durability, and concealed mounting, a³™ CeramicSteel Sans offers a clean aesthetic for any working environment. The following provides guidelines for installing your new board.

Safety Requirements	3
Handling + Storing Instructions	4
Required Equipment + Materials	5
Installation	6
Limited International Warranty	11

SAFETY REQUIREMENTS

a³ CeramicSteel Sans - Wall Mounted Frameless Dry Erase Board, Non-Seismic Applications

The building’s Engineer of Record must be consulted to determine if there are any seismic requirements.



Verify Wall Construction

CAUTION! Adequate wall construction is required to support the weight of the board. Minimum wall construction must be capable of supporting weight amounts listed in Table 1 on page 6.

Minimum Required Wall Construction

Drywall with metal studs:

- Must be atleast 25 ga. (0.018” or .5 mm thick) 33 ksi steel studs 38 mm x 89 mm (1.5” x 3.5”)
- Studs on maximum 610 mm (24”) centers
- Must be atleast 16 mm (5/8”) thick Type X gypsum drywall for the US or 12 mm (1/2”) for EU
- 32 mm (#6 x 1-1/4”) drywall screws on 305 mm (12”) centers

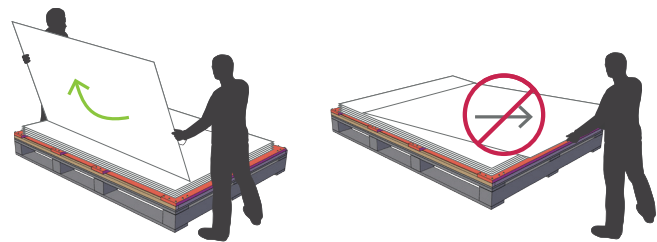
Drywall with wood studs:

- Stud grade SPF, DF-L or Hem-Fir 38 mm x 89 mm (1.5” x 3.5”)
- Studs on 610 mm (24”) centers
- Must be atleast 16 mm (5/8”) thick Type X gypsum drywall for the US or 12 mm (1/2”) for EU
- 32 mm (#6 x 1-1/4”) drywall screws on 305 mm (12”) centers

HANDLING + STORING OF PANELS

Handling

- When a³ CeramicSteel panels are shipped, they are protected by craft paper or a self-adhesive transparent polyethylene film. Keep panels in the original package until installation.
- Handle with care to prevent damage.
- Never slide panels off the stack during handling. Panels should always be lifted and moved in a vertical position.
- Never place an a³ panel in a vertical position on the floor. This is to prevent damage to the edges.
- Prevent dirt from settling on and between panels to avoid surface damage, scratches or defects.
- Follow all safety instructions regarding personal protection when processing the panels.
- Protect panel surface against sawdust and sparks (metal particles).
- a³ CeramicSteel will chip when cut or drilled with power tools. Hand-cutting can cause chipping up to approx. 2 mm from the edge. When chipping is in excess of 2 mm, please check the state of cutting tools and check that the panel is adequately supported and clamped to prevent it from vibrating.
- All cut or drilled sections should be protected against humidity with PVC tape and/or by covering/sealing profiles or sealing washers.
- For detailed processing instructions, please refer to the a³ processing instructions.



Storing

- Keep panels dry and free of debris.
- Store panels inside temps 50-90 °F (10-32 °C).
- Any panels stored outside should be protected from inclement weather conditions.
- Place panels on hard, flat surfaces that are not subject to standing water.
- a³ CeramicSteel panels should be stacked no more than three high.
- Panels should never be stored vertically or in such a way that the corners are vulnerable to damage.

If you have a problem, question, or a request, call your local fabricator, your regional sales manager or PolyVision Customer Service. PolyVision's global customer service team can be contacted on polyvision.com.

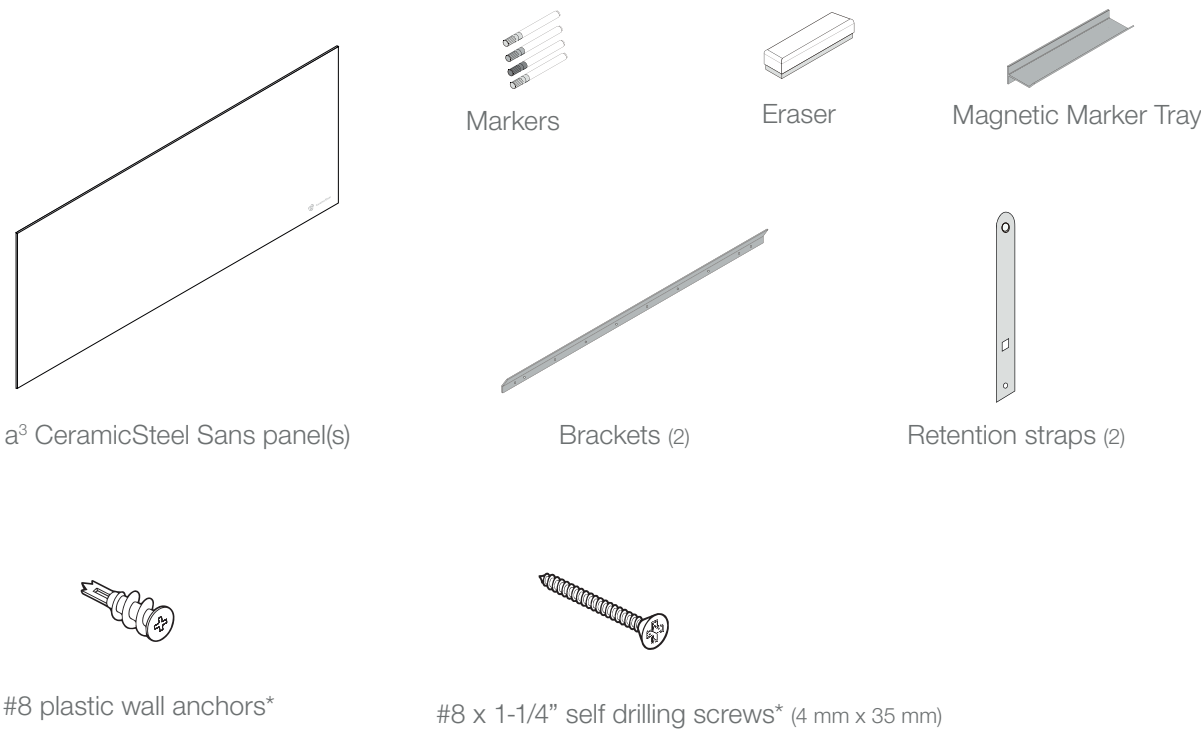
REQUIRED EQUIPMENT + MATERIALS PROVIDED

Required Equipment

1. Drill
2. #2 Bit
3. Glass suction cup lifters (2)
4. Pliers
5. Pencil
6. Level
7. 2 or 3-step ladder
8. Tape measure

Materials Provided

NOTE: Items are not drawn to size. Quantity of wall anchors and screws will vary per product due to the various widths. Board size determines the quantity of anchors and screws.*



*Size Variations: Sans 2420 (20) Sans 1830 (16) Sans 1220 (12)

INSTALLATION

Before starting the installation of a³ CeramicSteel Sans

- 1. Verify that the required equipment is available and material provided is accurate.
- 2. Provide adequate protection for finished floor surfaces.
- 3. It is recommended for all a³ CeramicSteel Sans installations to be carried out by two or more individuals.

Step One

- 1. Use appropriate mounting specification based on the size of your a³ CeramicSteel Sans.

NOTE: You may drill holes in the support bracket to install into the wall stud for strongest support. Anchor into wall studs as often as possible. Mounting heights are recommendations only.

Recommended Mounting Height:

A = 77" (1956 mm)

B = 29-15/16" (745 mm)

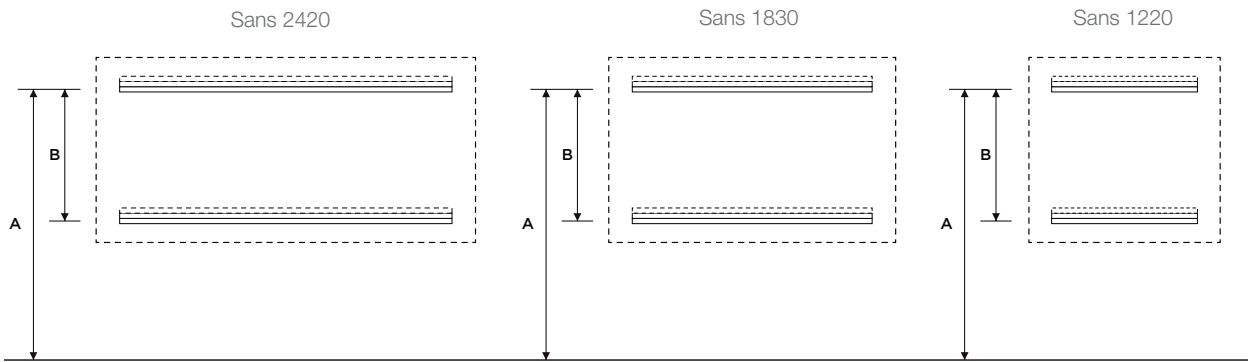
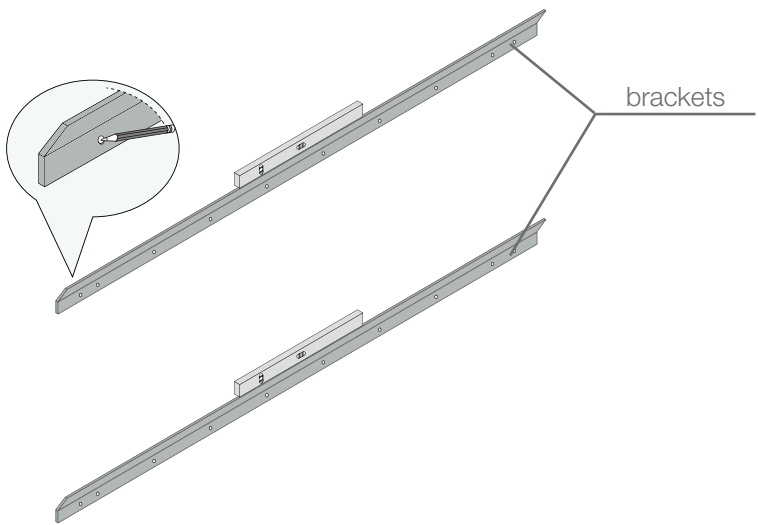


TABLE 1		
Product	# of Studs	Weight (kg/lb)
Sans 2420	4	44 kg/97.0 lb
Sans 1830	3	37 kg/81.5 lb
Sans 1220	2	25 kg/55.1 lb

INSTALLATION

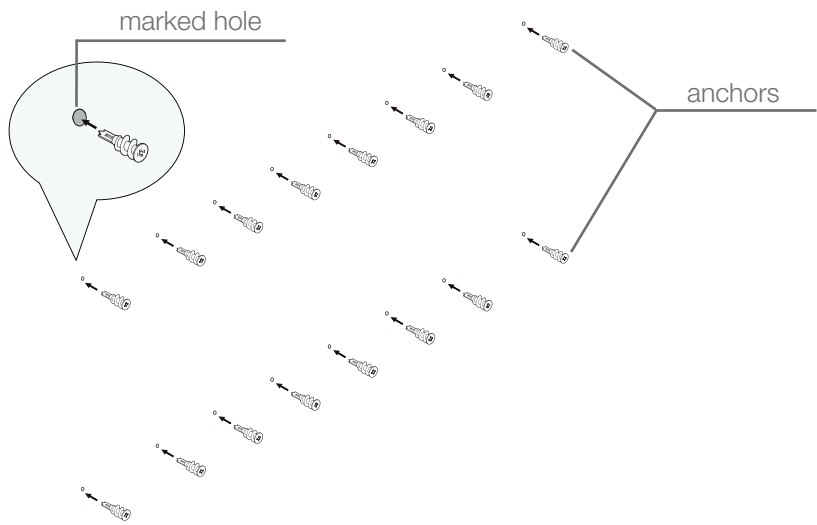
Step Two

- 1. Level brackets and mark holes onto wall. Refer to recommended mounting heights noted on page 4.



Step Three

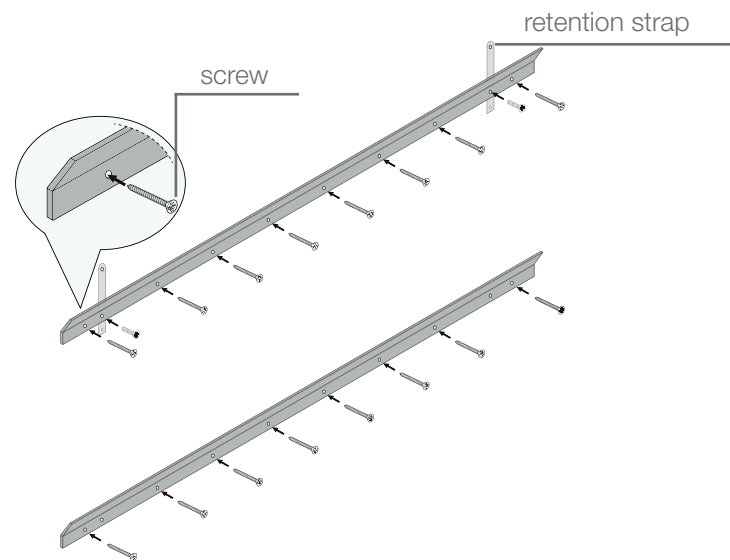
- 1. Remove brackets from wall and install wall anchors in all hole locations that are not over a stud. Anchor may not be needed for stud.



INSTALLATION

Step Four

- 1. Re-align brackets with holes and secure using screws.
- 2. Align the top hole in the retention strap with the hole in the top bracket and attach the retention straps between the top bracket and the wall. Make sure each strap is aligned with and secured to a stud.

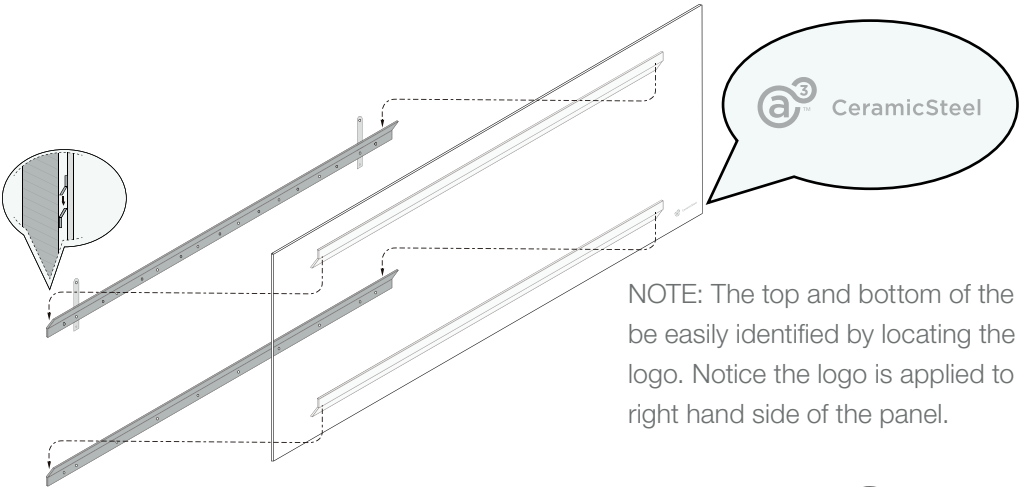


NOTE: You may need to drill an extra hole in the top bracket to mount the retention strap to a wall stud. Safety strap usage is for seismic purposes. Regulations may vary by region.

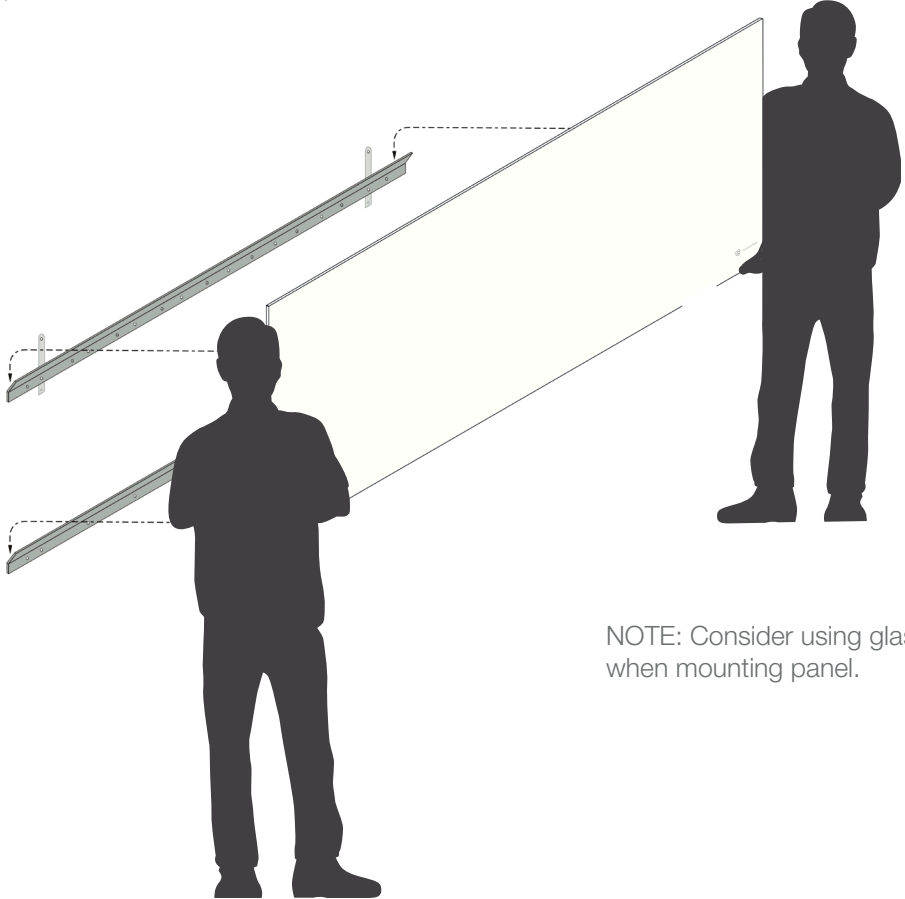
INSTALLATION

Step Five

- 1. Lower brackets on back of a³ CeramicSteel Sans onto brackets on wall. IMPORTANT: Always check to insure both top and bottom panel brackets are resting on the wall brackets.



NOTE: The top and bottom of the board can be easily identified by locating the branded logo. Notice the logo is applied to the bottom right hand side of the panel.

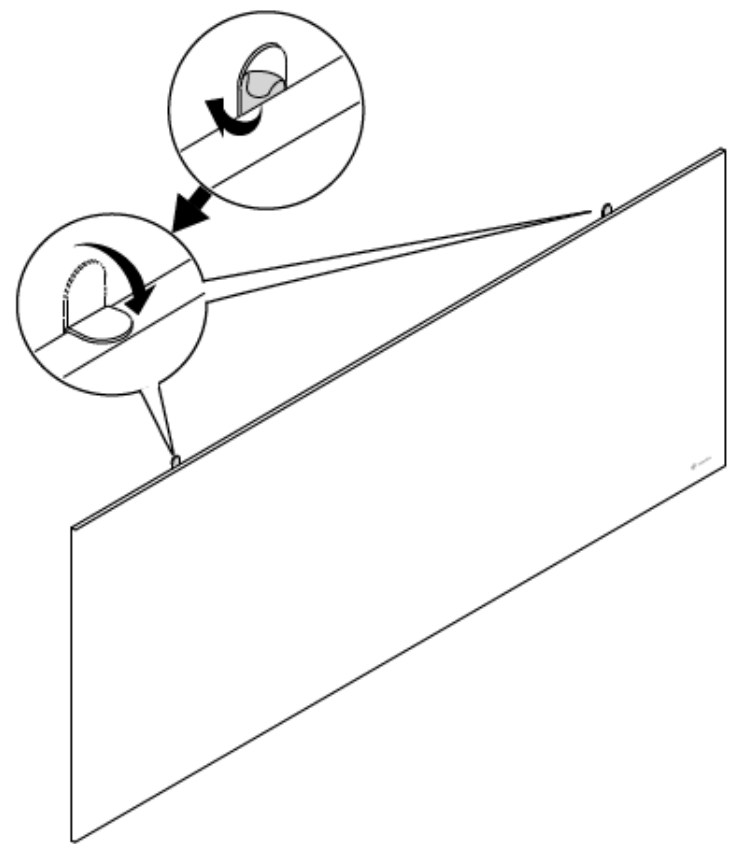


NOTE: Consider using glass suction cups when mounting panel.

INSTALLATION

Step Six

Remove tape liner from retention strap. Firmly press against the back of the panel while bending the top portion of the retention strap onto the top edge of the panel. Make sure the tab fits as flat as possible on the panel edge.



Step Seven

- 1. Installation of the a³ CeramicSteel Sans is complete.

LIMITED INTERNATIONAL WARRANTY

Surfaces and Architectural Panels have a limited warranty for 20 and 10 years, respectively, valid from the date of shipment. The limited warranty provides that the products, under normal atmospheric conditions and when sealed from moisture, will not fade, stain, discolor, craze, crack, flake, corrode or delaminate from the substrate or warp for the applicable period. Please see the full PolyVision a³ CeramicSteel Surfaces and Architectural Panels: Limited International Warranty for specific details, applicability and limitations.

Warranty effective 08.01.2011



PolyVision®
polyvision.com

PolyVision Americas
10700 Abbotts Bridge Rd.
Suite 100
Johns Creek, GA 30097 USA
Tel. 1-888-325-6351
info@polyvision.com

PolyVision Europe
Zuiderring 56
3600 Genk, Belgium
Tel. +32 (0) 89 32 31 30
EMEAsupport@polyvision.com



©2016 PolyVision Corporation. All rights reserved. Trademarks used herein are the property of PolyVision Corporation or of their respective owner. PolyVision Corporation reserves the right to make changes in product design, construction or detail, and to discontinue any product or material without notice. No part of this document may be reproduced, transmitted, transcribed, stored in a retrieval system, or translated into any language in any form by any means without prior written permission from PolyVision.

PolyVision Asia-Pacific
15th Floor, Kinwick Centre
32 Hollywood Road, Central District
Hong Kong
Tel. +852 2520 0160
APACsupport@polyvision.com