

Product Description

Apt chair provides excellent comfort and support for individual users engaged in task intensive work. The synchro tilt back and a range of intuitive controls enable easy adjustment to suit different user physiques, and the task at hand. It is available in leather and fabric upholstery in a select range of colors to complement modern office design.



Material Declaration

Metal	kg	%	Plastic	kg	%	Others	kg	%
Steel	10.63	52.9%	Polypropylene	6.14	30.6%			
			Polyurethane Foam	1.53	7.6%			
			Plywood	1.66	8.3%			
			Fabric	0.13	0.6%			

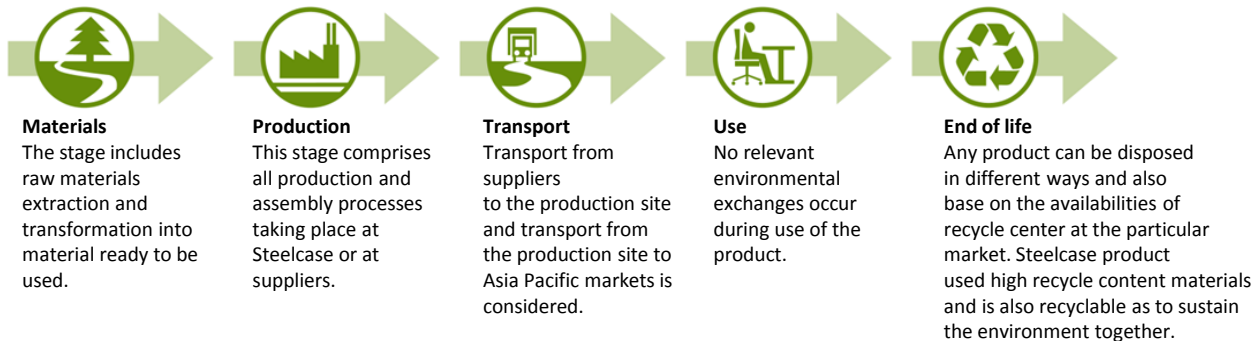
Manufacturing Information

The selected product **Apt Chair** is manufactured in Dongguan, China

Steelcase, which was founded in 1912, has been dedicated to creating innovative products and helping people work more effectively for almost a century. Steelcase has management systems for Quality (ISO 9001) and for the Environment (ISO 14001), ensuring that our customers are guaranteed the same level of product quality and environmental performance, wherever they are in the world.

Steelcase is committed to continually reducing the environmental impacts of its products and activities on a global scale. For further information visit www.steelcase.asia

Life cycle stages

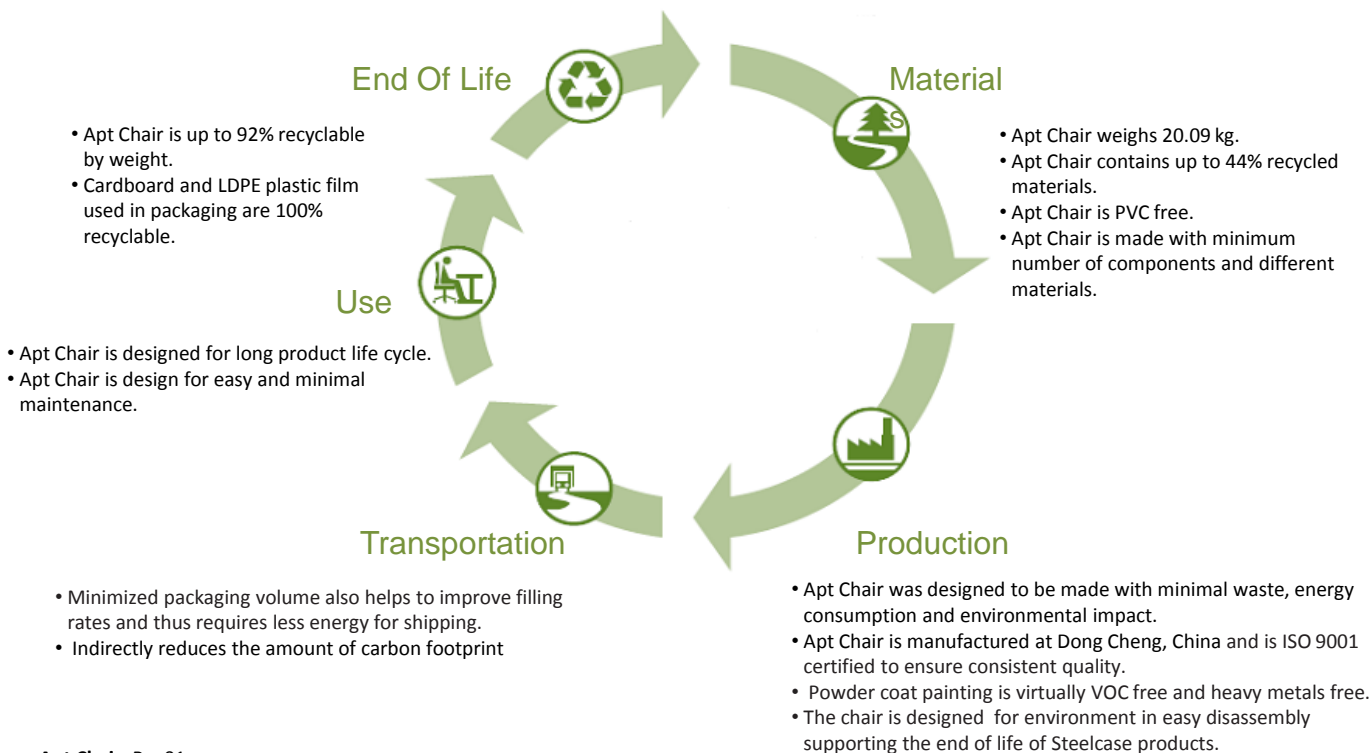


Recycle Content Calculation

	Weight (Kg)	Percentage (%)
Recycled Content	8.90	44%
Post Consumer Recycle Content	7.0	35%
Pre Consumer Recycle Content	1.9	9%
Recyclable Content	18.4	92%
Total Weight	20.09	-

Certified Result

Chemical Group	Criteria	Acceptance
TVOC	$\leq 0.25 \text{ mg/m}^3$	NA
Formaldehyde	$\leq 25 \text{ ppb}$	NA
Total Aldehydes	$\leq 50 \text{ ppb}$	NA
4-Phenylcyclohexene (4-PCH)	$\leq 0.00325 \text{ mg/m}^3$	NA



Apt Chair_Rev01

Disclaimer :

Numbers may vary based on model and options selected. Calculations of recycled content are based on data provided by suppliers and other available information. This data may include industry averages, ranges or other broadly based information. Steelcase makes conservative assumptions when compiling this information to provide the most accurate recycled content calculations possible but variability in market conditions or manufacturing processes may result in higher or lower content. This document may be subject to review and update from time to time without notice.