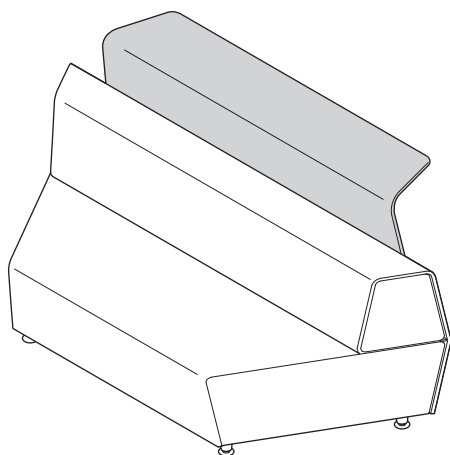
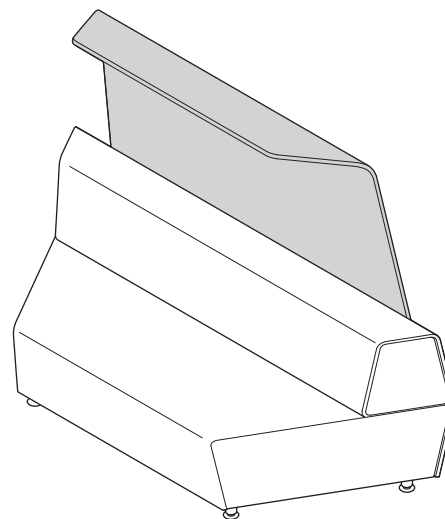


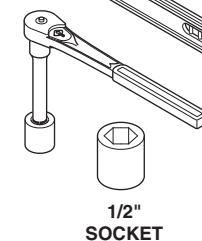
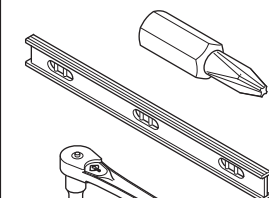
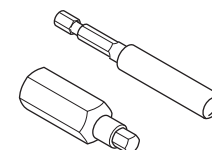
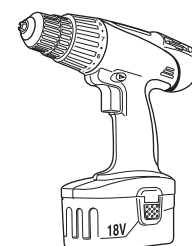
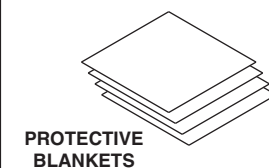
Ledge

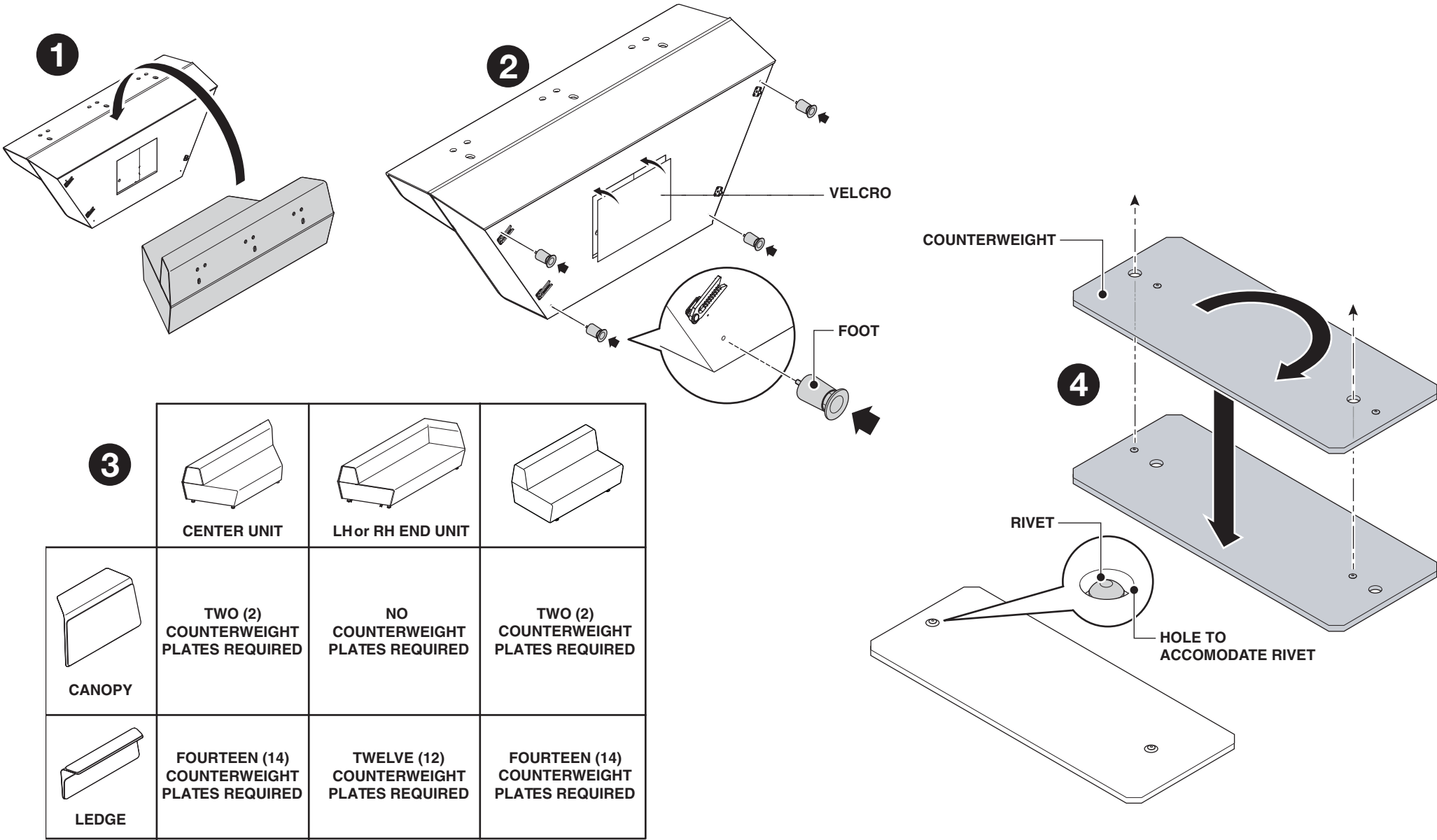


Canopy

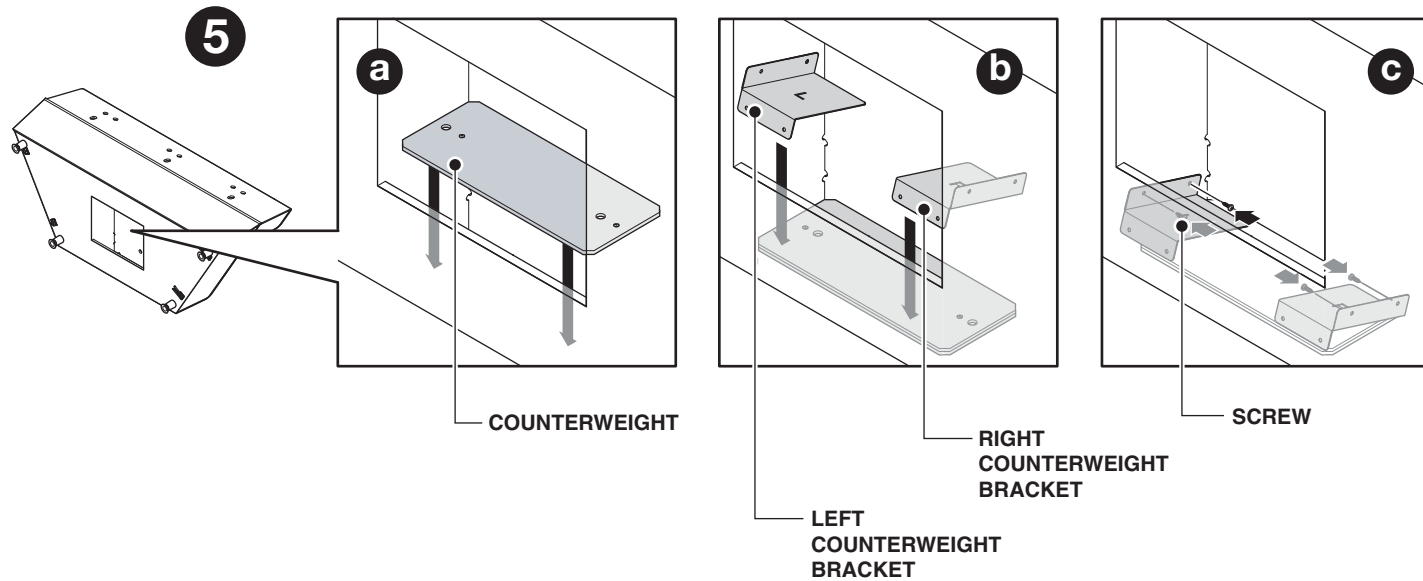


CAUTION : Install the necessary counterweight plates as per pages 2 & 3.
Failure to follow these instructions could result in the lounge tipping over
and causing personal injuries.

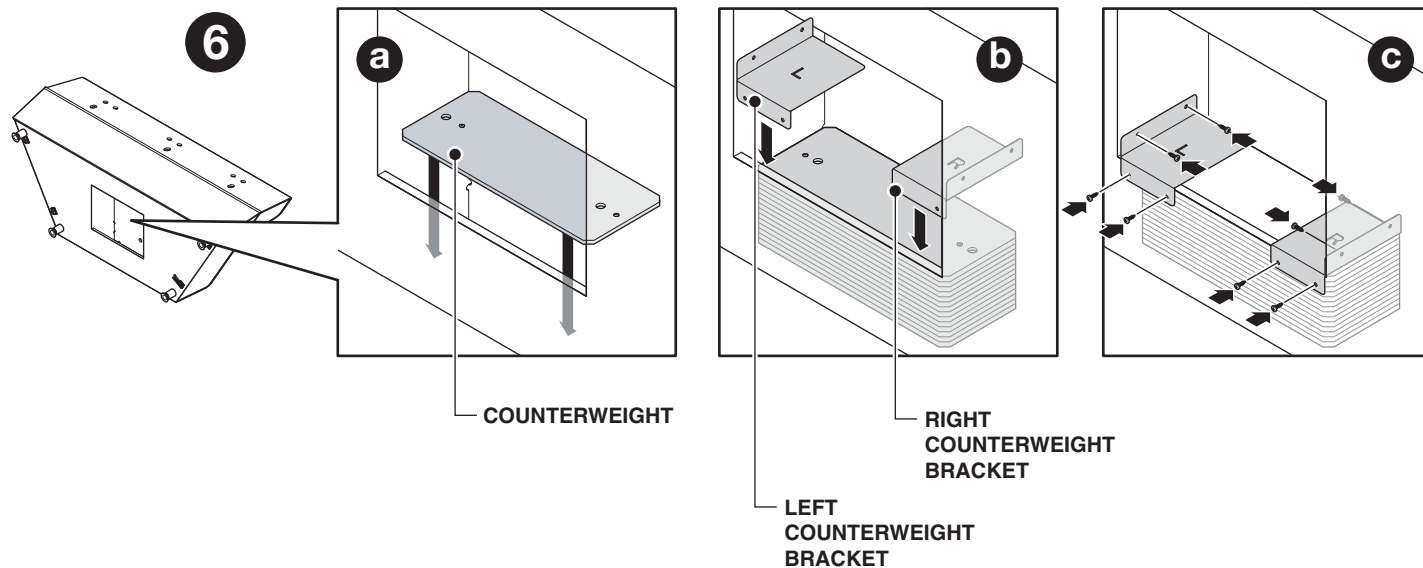




Installing Two (2) Counterweights for Canopy

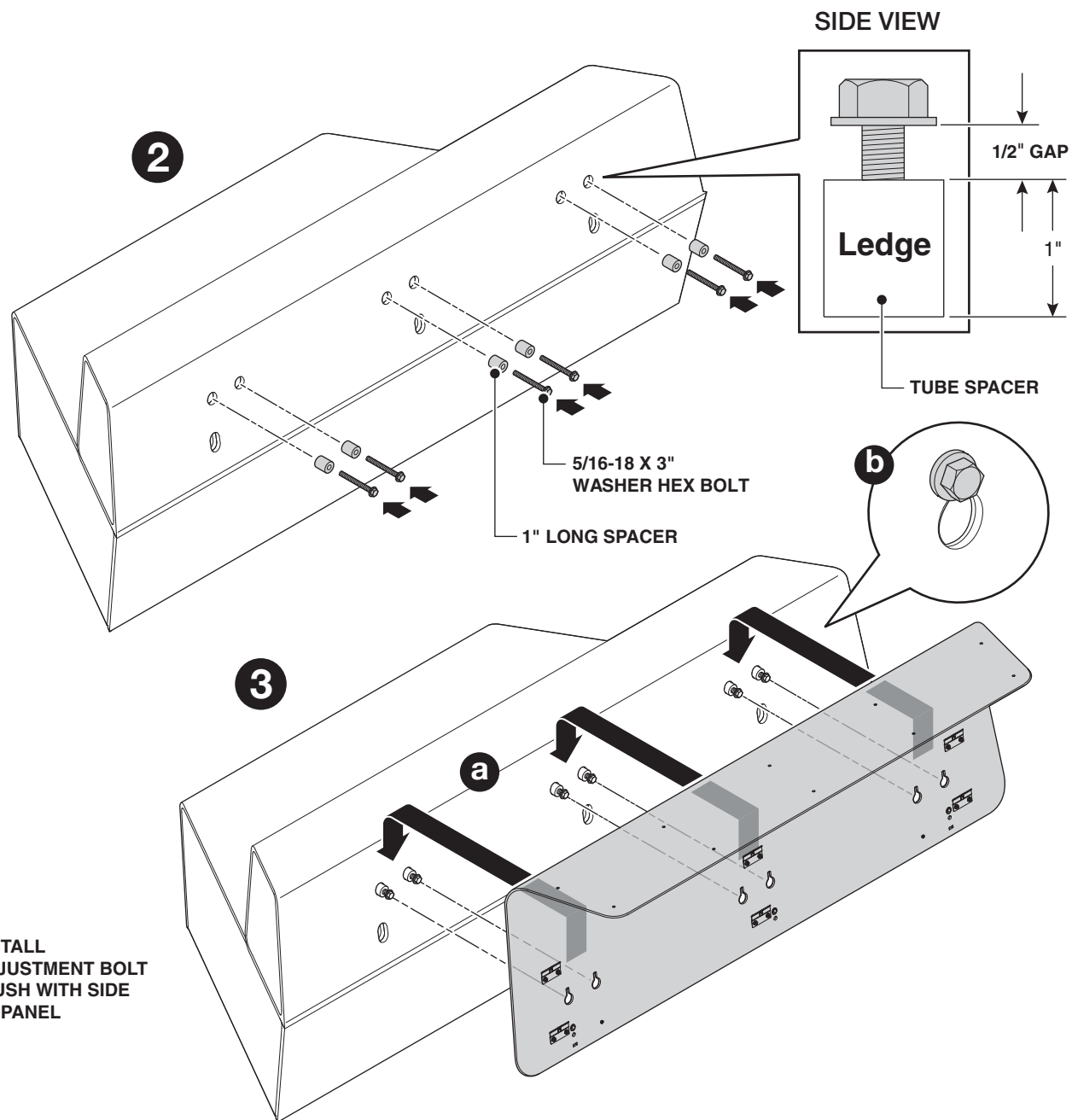
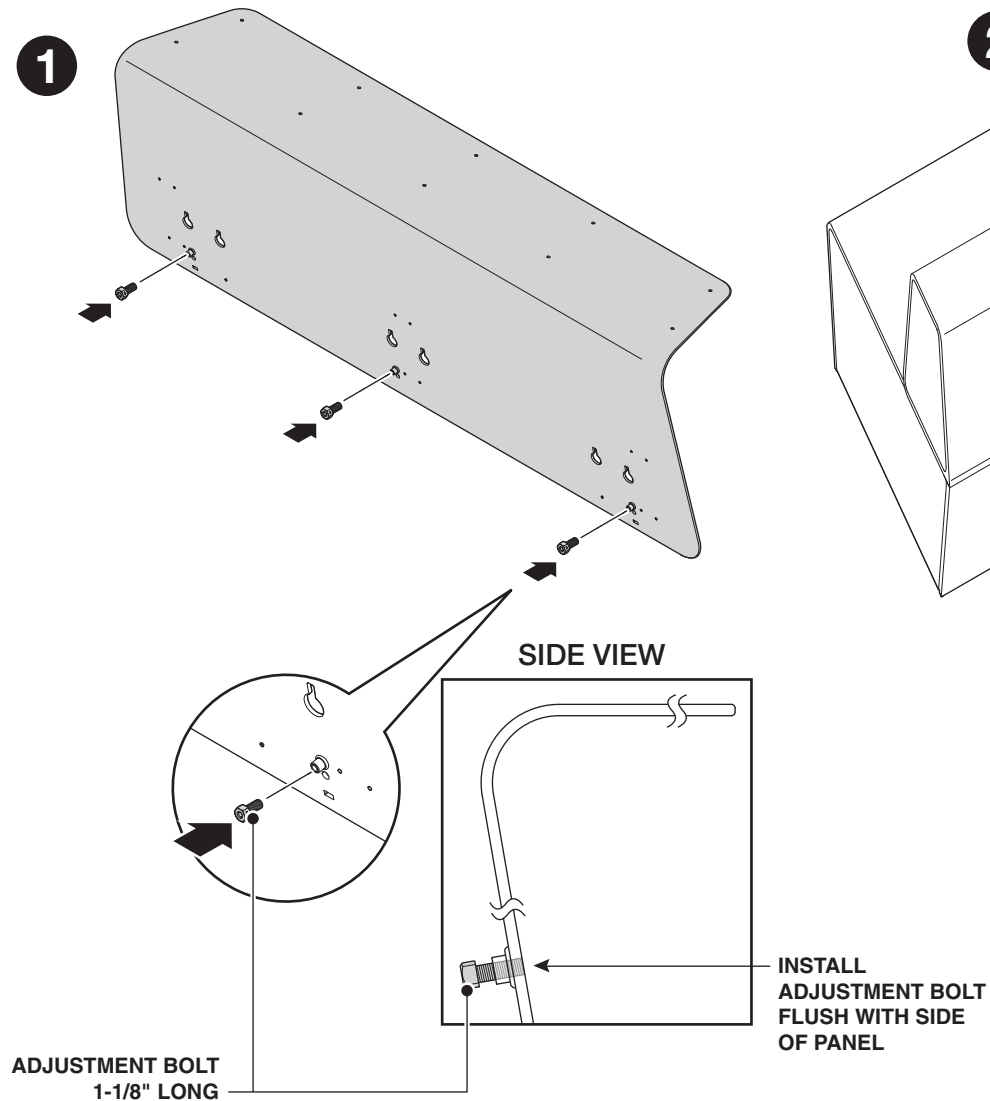


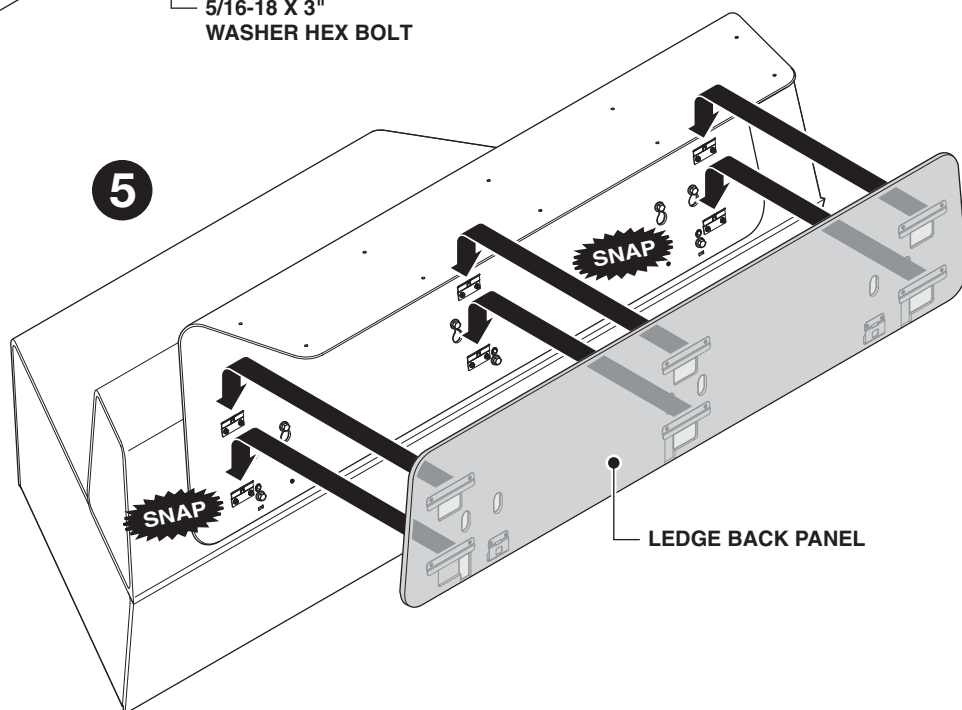
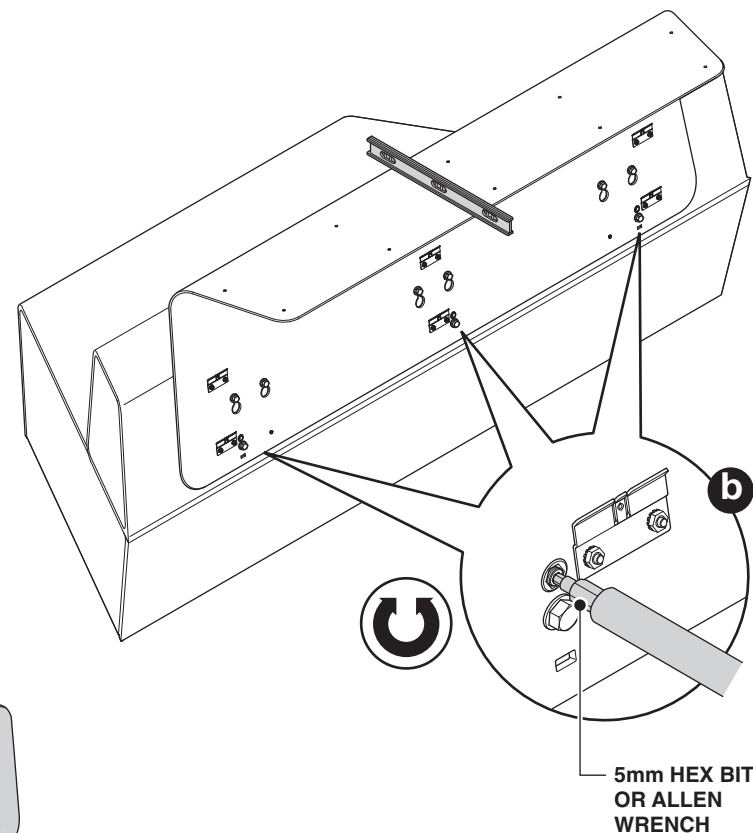
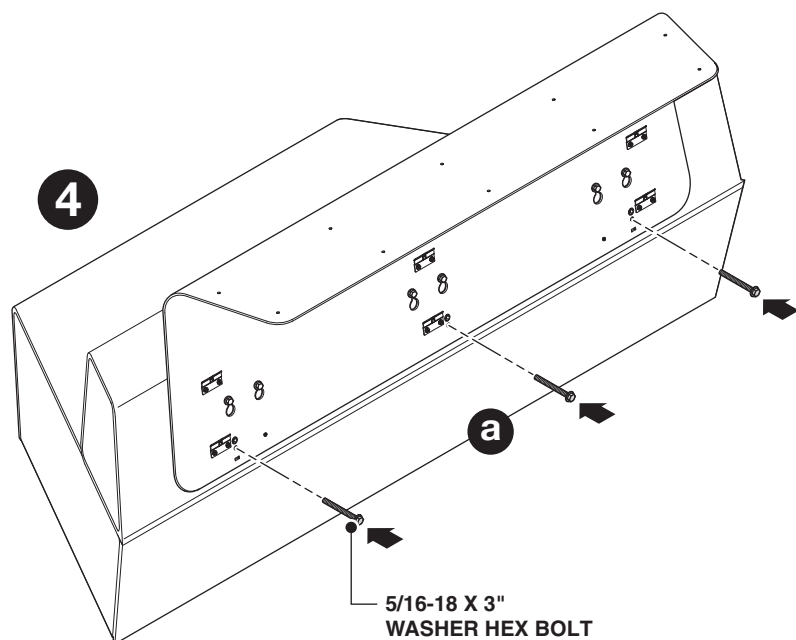
Installing Twelve (12) or Fourteen (14) Counterweights for Ledge



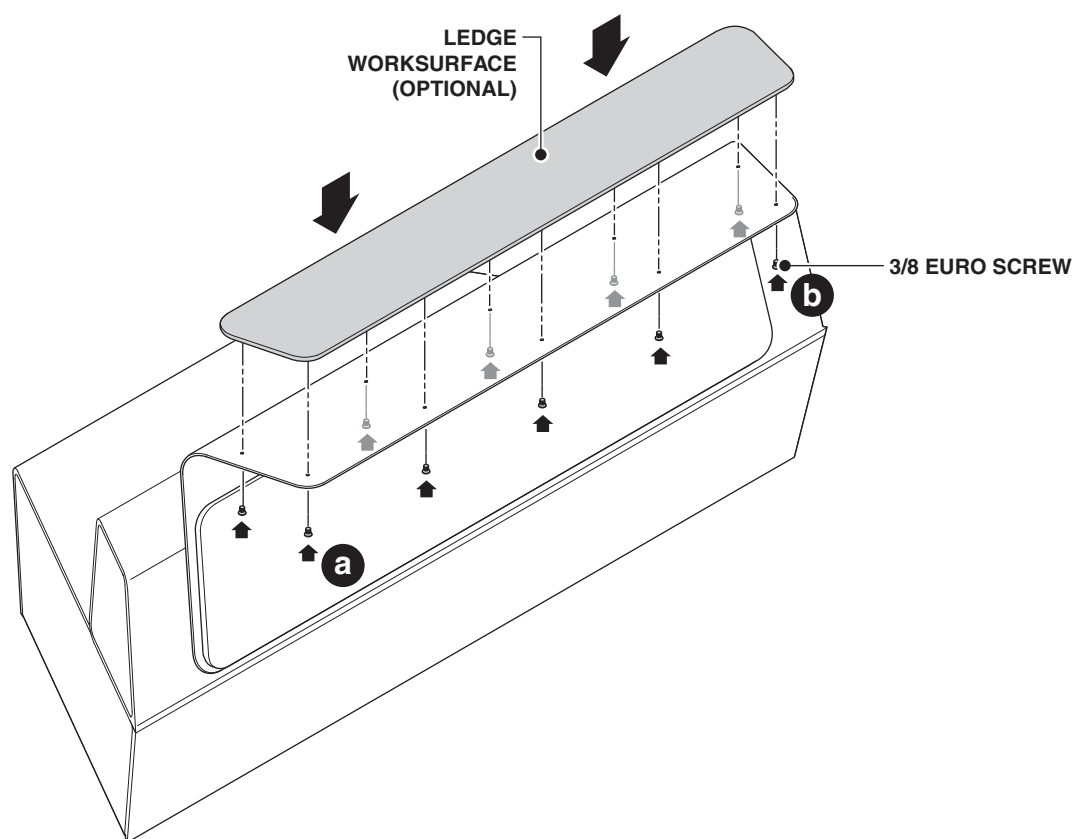
Ledge

NOTE : This installation requires two (2) installers.





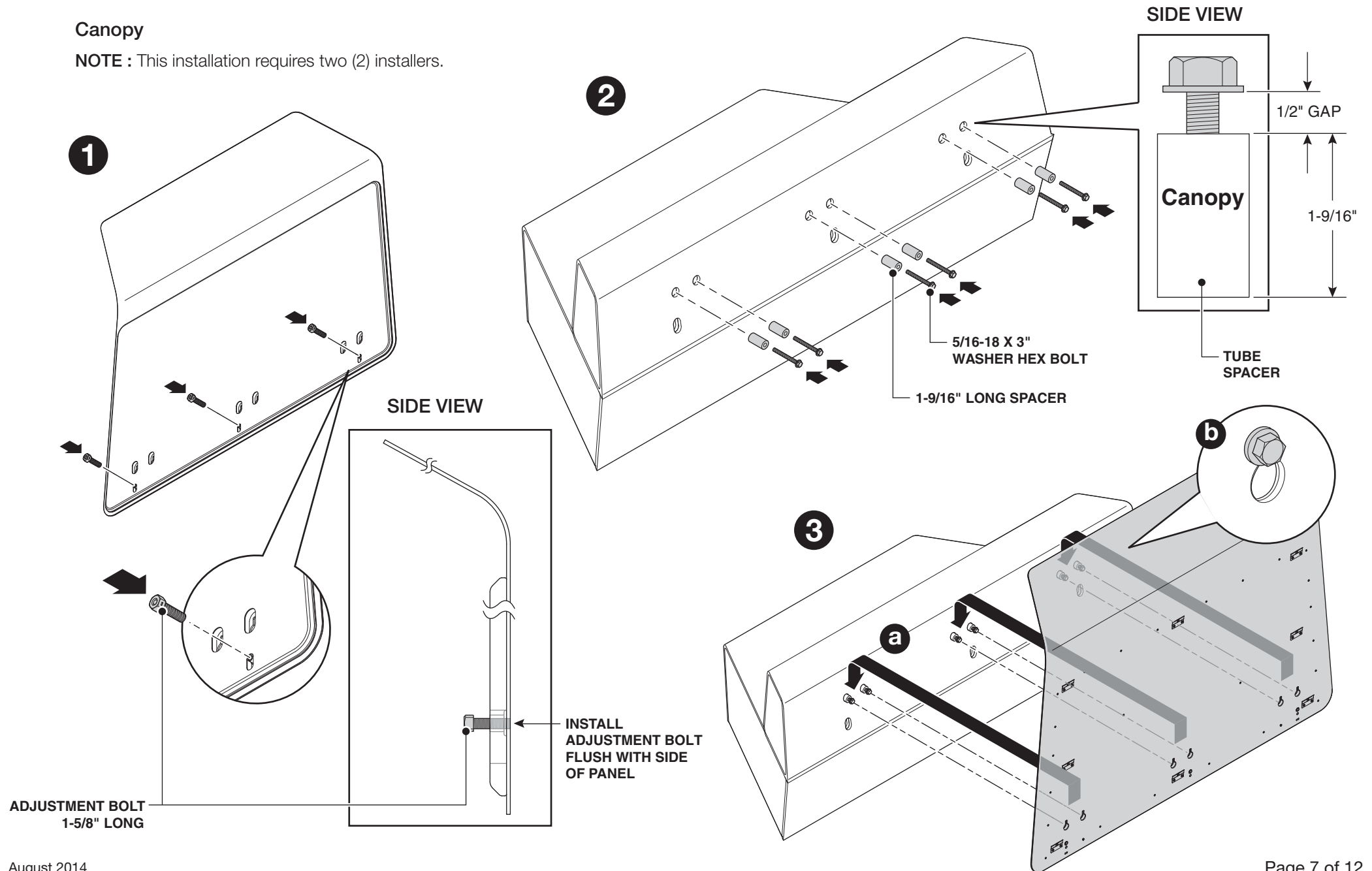
Ledge Worksurface (Optional)



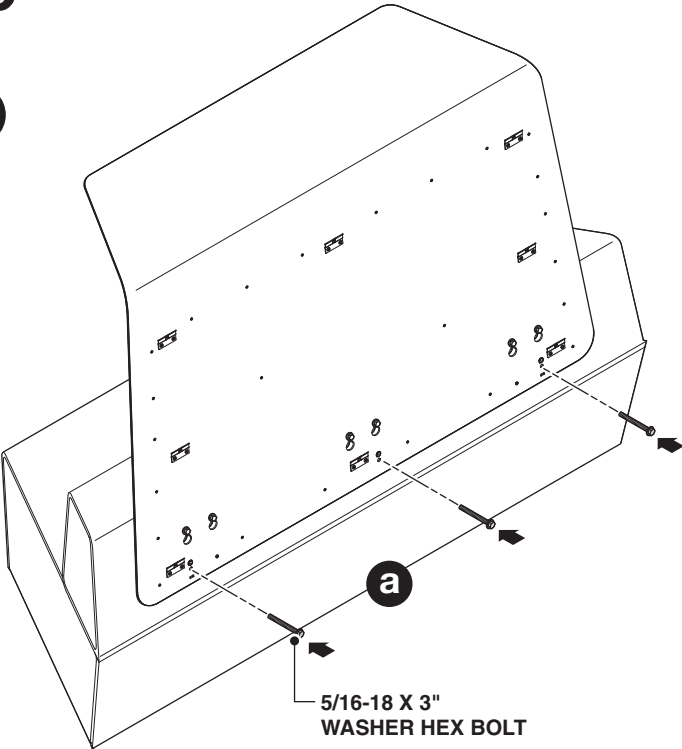
NOTE : Do not over-tighten euro screws.

Canopy

NOTE : This installation requires two (2) installers.



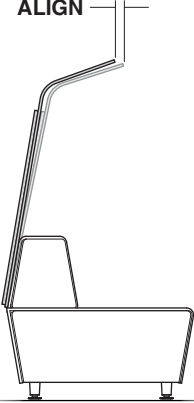
4



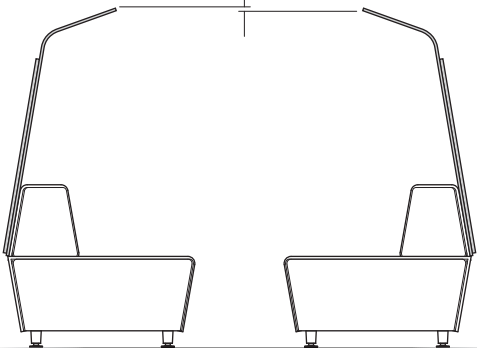
ALIGN

SIDE VIEW

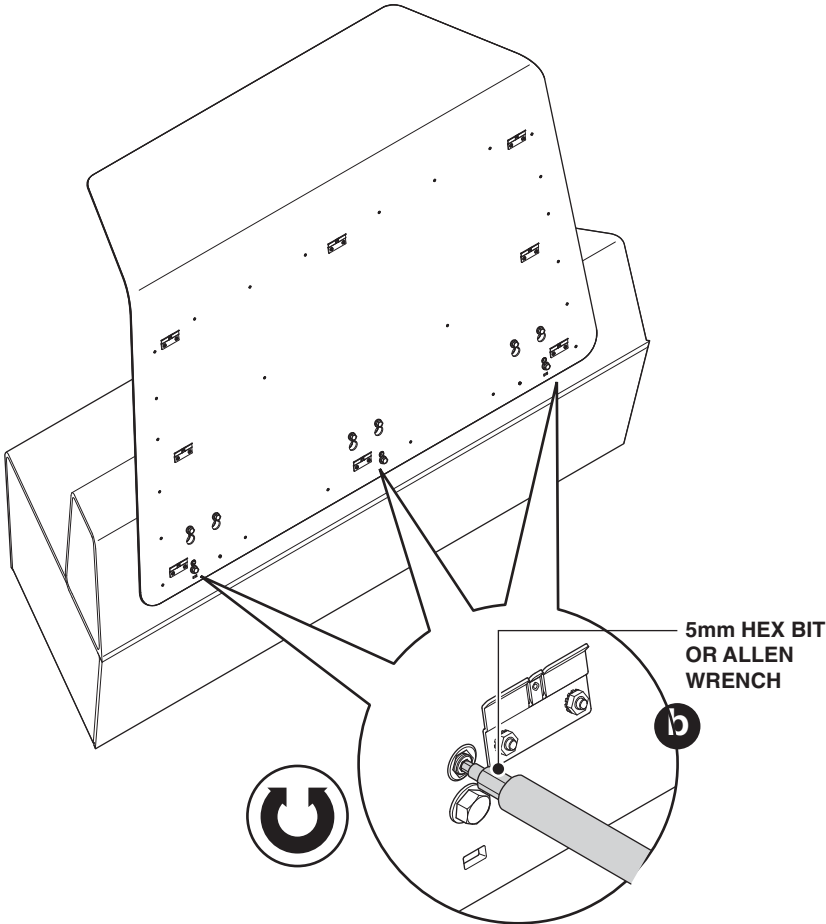
ALIGN

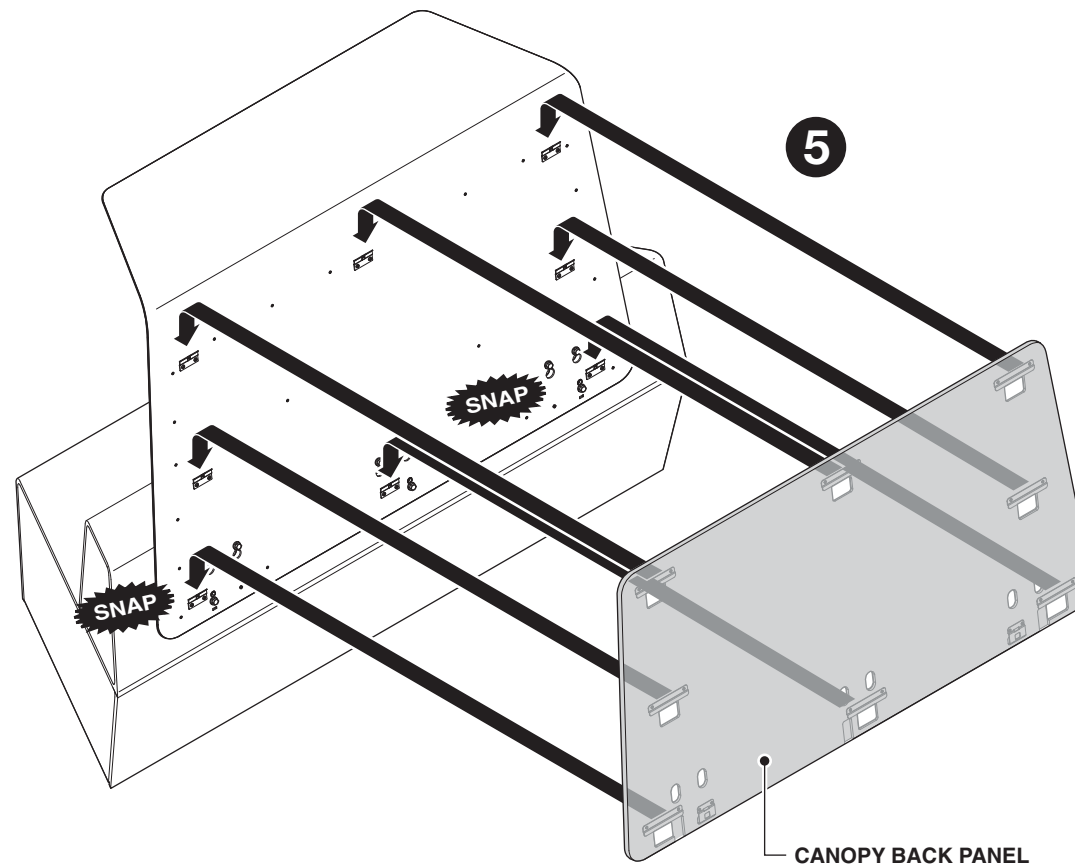


CANOPIES INLINE
WITH EACH OTHER



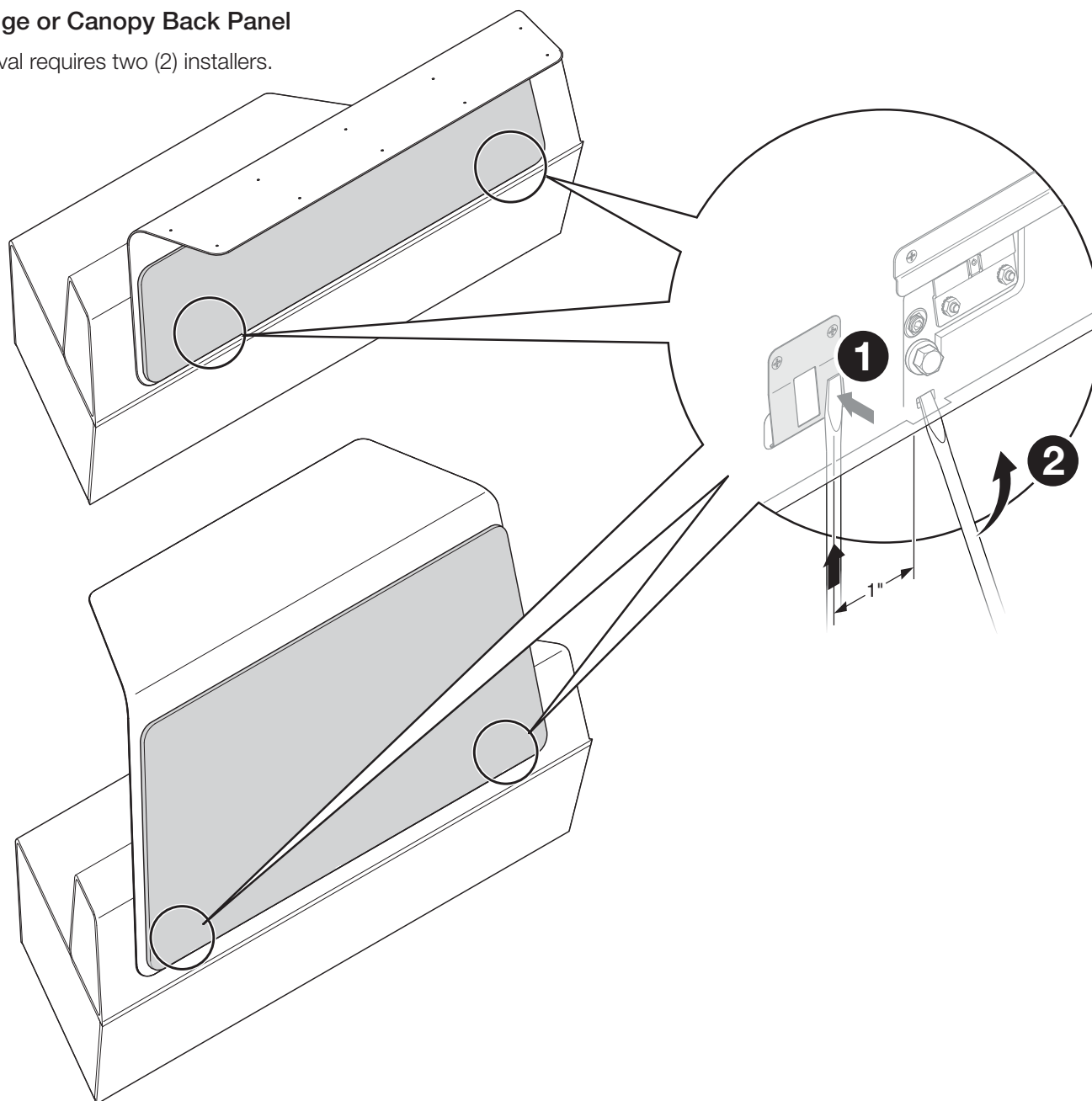
CANOPIES FACE TO FACE-
WITH EACH OTHER





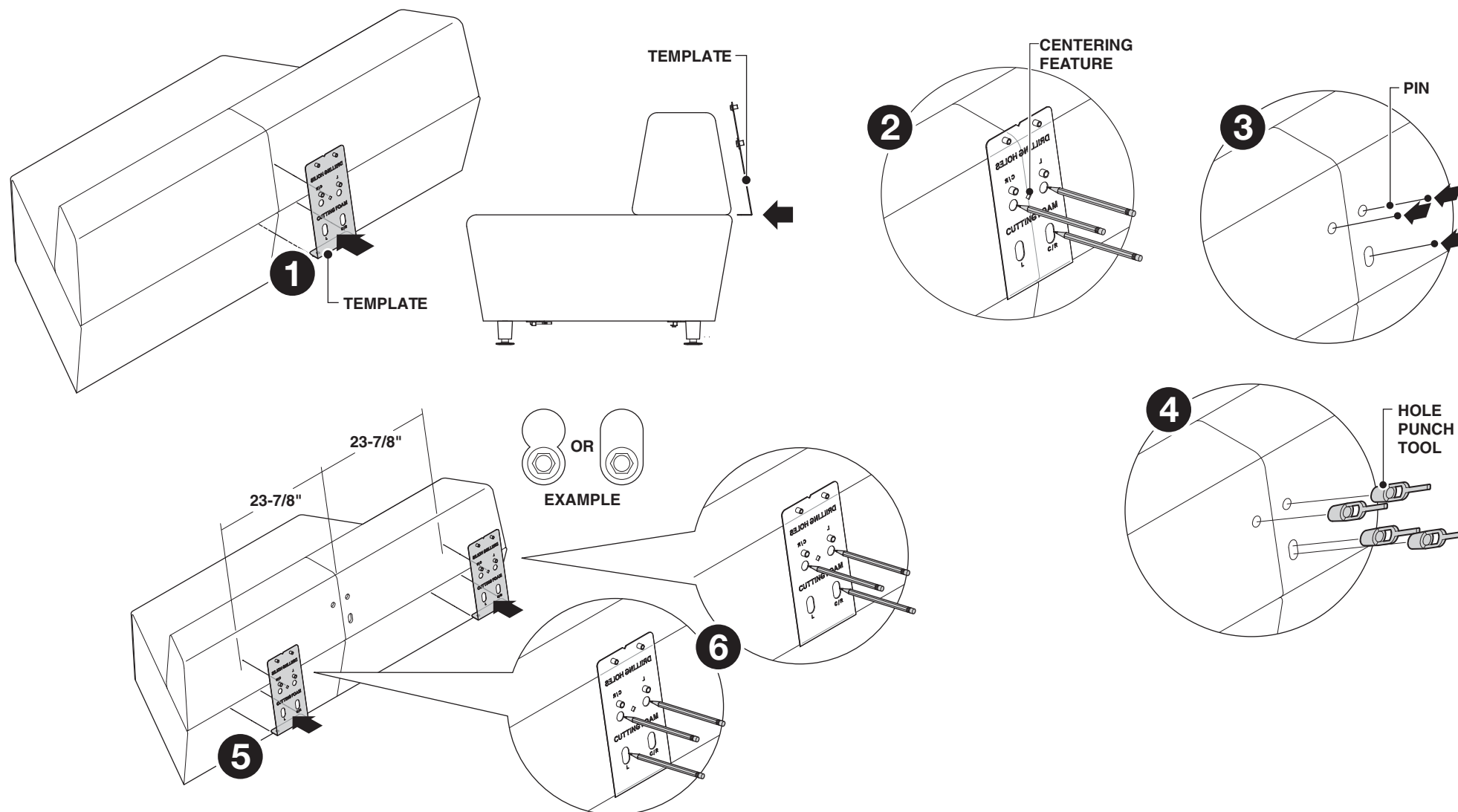
Removal of Ledge or Canopy Back Panel

NOTE : This removal requires two (2) installers.



Modification to an existing lounge

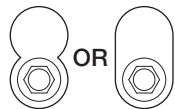
NOTE : You will need to cut the holes in the fabric.
We recommend a hole punch tool that is 1" diameter.
(McMaster -Carr, Osborne, etc.)



If the existing lounge **DOES NOT** have a threaded insert in the oblong hole location

NOTE : You will need to purchase a 7/16" diameter drill bit & a 5/16 hex bit or allen wrench

OBOUND HOLE SHOULD
LOOK LIKE THIS
WHEN COMPLETED



DEPENDING ON THE
CUTTING METHOD,
BOTH ARE ACCEPTABLE

