

Steelcase

Boundary Tent

Boundary Tent is a lightweight and versatile freestanding screen that provides visual privacy and shielding in a wide range of spaces. A simple, organic shape makes it perfect as an extra layer of privacy in shared, ancillary spaces.



FEATURES



TWO SIZES

Available in two screen sizes and two pole heights, Boundary Tent helps achieve just the right amount of on-demand privacy, wherever you work.



ORGANIC SHAPE

The organic shape, curves and contrasting materiality enhance the visual interest in any space.



MAGNETIC POCKET

A magnetic pocket at the bottom of the screen keeps Boundary Tent in place and attached to the pole.



PORTABLE + FLEXIBLE

The lightweight and portable Boundary Tent is easy to move and provides flexibility to go where your work happens.



BUTTON CONNECTIONS

Boundary Tent effortlessly connects to the connector buttons at the top of the pole, allowing for quick and easy installation.



TWO-SIDED

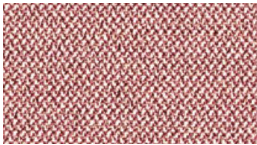
The pole accommodates screens on both sides, allowing for use in-between adjacent spaces.

SURFACE MATERIALS OPTIONS

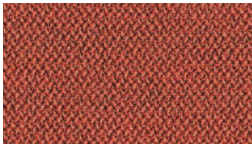
Screens are available with these predetermined palettes. Custom Era fabric selections are available with an upcharge. Outer fabric rim is a color match to 6059 Sterling Dark Solid.

Steel pole and base available in all Steelcase standard, accent and lux coatings, as well as Perfect Match.

WARM PALETTE

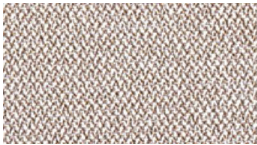


Era Pink Lemonade (primary) 5ER8



Era Scarlet (accent) 5ES0

NEUTRAL PALETTE



Era Comet (primary) 5ER5



Era Night Owl (accent) 5ES7

COOL PALETTE



Era Royal Blue (primary) 5ES6



Era Night Owl (accent) 5ES7

PLASTIC

(connector buttons)



Sterling Dark Solid 6059

DIMENSIONS

Screen	
Diameter	1372mm or 1676mm
Pole	
Height	1499mm or 1803mm
Basediameter	406mm
Pole diameter	25mm