

Real Work

Cool cafés are popping up in corporate environments everywhere



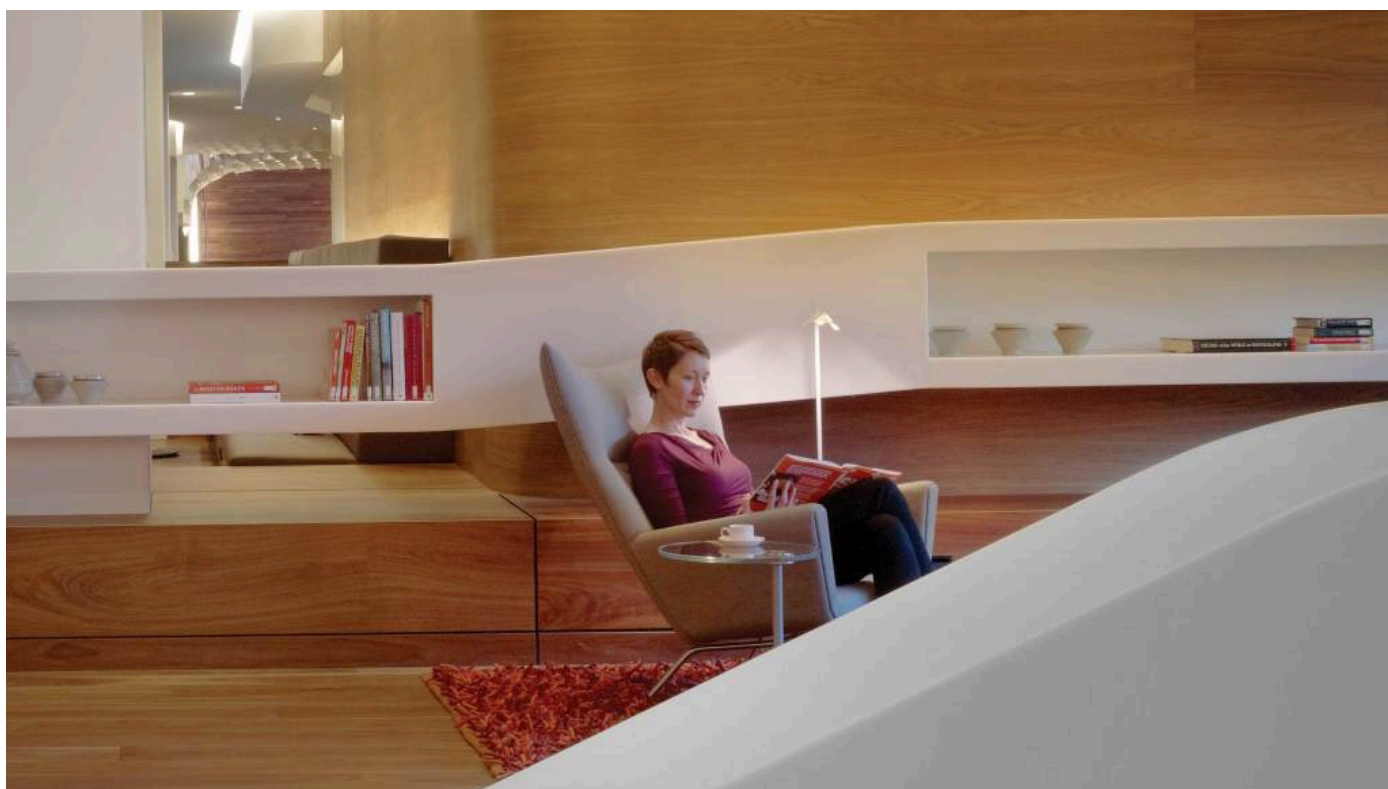
YOU'LL BE SURPRISED WHERE IT IS HAPPENING

Recently, Google opened its own coffee shop on its campus in Mountainview, Calif. Branded the Coffee Lab, its décor is reminiscent of a Starbucks, with warm wood paneling, plush upholstered seating and chalkboards that advertise daily specials and upcoming live music. This action is not headline news— especially when you consider how many corporate campuses have coffee shops on location. But it's a signal that the landscape of workplaces is changing.

The Coffee Lab is evidence of how organizations are trying to provide employees with access to environments that offer some of the relaxed amenities of home, dubbed the “first place” by sociologist Ray Oldenburg, and the energy of a corner coffee shop—an example of a “third place.” Leading organizations are blending these concepts at work, the “second place.” “Google’s solution provides workers with the vibe they are craving from the workplace,” says Frank Graziano, manager of advanced applications at Steelcase, who recently visited the new café at Google. “The Coffee Lab becomes a third place on campus, literally. This kind of place is a neutral territory. If you want to meet with outside vendors or partners, it’s like a front porch to the campus.”

More than just a workplace fad, the merger of first- and third-place attributes signals a long-term change in the way work is happening around the world. During the last few years, work has become dramatically more intense. Business tasks today are more varied and more challenging, and in some countries workers are increasingly mobile and distributed. Some organizations embrace the idea of employees working in a coffee shop or other third place for a variety of reasons. Employees may need places where they can relax or work undisturbed. Or organizations may simply want to manage their real estate costs by having fewer bodies in the office. Other organizations feel strongly that people need to be together in the workplace in order to innovate and do their best work. And in many countries, the culture or the availability of “third places” simply does not support a mass exodus from the primary workplace. Regardless, employees in every organization are working longer and harder, and they need a physical environment that not only supports them, but also re-energizes and inspires them.

But is mimicking the local coffee shop at work enough? Is it giving workers what they really need? Is it possible that a third place in the office could provide an even better experience than the places employees find outside of work and create a place where real work can happen?



THE HISTORY OF THIRD PLACES

Third places—essentially, public places that help people get through the day or allow them to gather—have been inspiring innovation and stirring conversations throughout Western civilization. In the 16th century, the Protestant Reformation started at a tavern called the White Horse Inn in Cambridge, England. In the 17th and 18th centuries, news and gossip would fly from coffee shop to coffee shop in Europe, so much so that a journalist for *The Economist* dubbed them “the internet of the Enlightenment era.”

Today, we can thank Starbucks and other coffee shops for the modern-era third place, which has disrupted the work experience and caused its own revolution in the workplace. As Oldenburg noted in his seminal “The Great Good Place,” most third places revolve around beverages. While fast-food chains grow at a rate of only 2 percent per year, coffee shop chains grow more than 10 percent annually, one study found. There is something about a coffee shop that brings people in and keeps them there.

According to workplace consultants Flex + Strategy, 31 percent of full-time employees in the United States do most of their work away from their employers’ locations. The draw to third places and the addition of third-place attributes to the office is strong and getting stronger in places such as North America and The Netherlands, though it’s not as prevalent in other locations around the globe. But that doesn’t mean that employees worldwide don’t desire similar things.

In Asia Pacific, limited real estate often doesn’t allow for full-size Coffee Lab-type office additions. Yet companies everywhere realize the benefits of the third place and are looking for ways to add elements of that experience in smaller footprints. In many European countries, workers don’t usually go off-site to work, but they highly value social connections and benefit from environments that support them in the office.

“When workers leave the workplace to work, it separates them from their coworkers, organizational resources and culture.”

“For organizations there’s an opportunity to provide something so much better than the local coffee shop. There’s a rich opportunity to provide destinations on campus that, yes, have a cool vibe, great coffee and nourishing food, but are also highly functional places to do one’s best work.”

He suggests that workers who tried going off-campus to coffee shops met challenges beyond their control and are now seeing the advantages that only a workplace can provide.



“We’re bringing the comforts of home and community of third place to the workplace to make the office the best place to work,” he says. “When you do that, it changes the physical character and social experience of the workplace. It fosters a shift in work culture.”

Even in countries where work and personal life have been distinctly separate, workers are either choosing or acquiescing to have more of their work life and non-work life better integrated. These changing attitudes, coupled with the intensity of work today, are causing organizations to radically rethink their workplaces, and merge the best of the first and the third place to foster higher levels of employee engagement.



ESPRESSO IS NOT ENOUGH

People may seek out a third place because of its inherent good qualities—the ability to work without colleagues stopping by, lounge furniture with a home-like feel, the energizing buzz of people, access to good food, an attractive ambience. But there are also inherent downsides. Comfy furniture might not be so comfortable when you have to sit in it all day. It doesn't always properly support technology devices or allow workers to spread out reference materials.

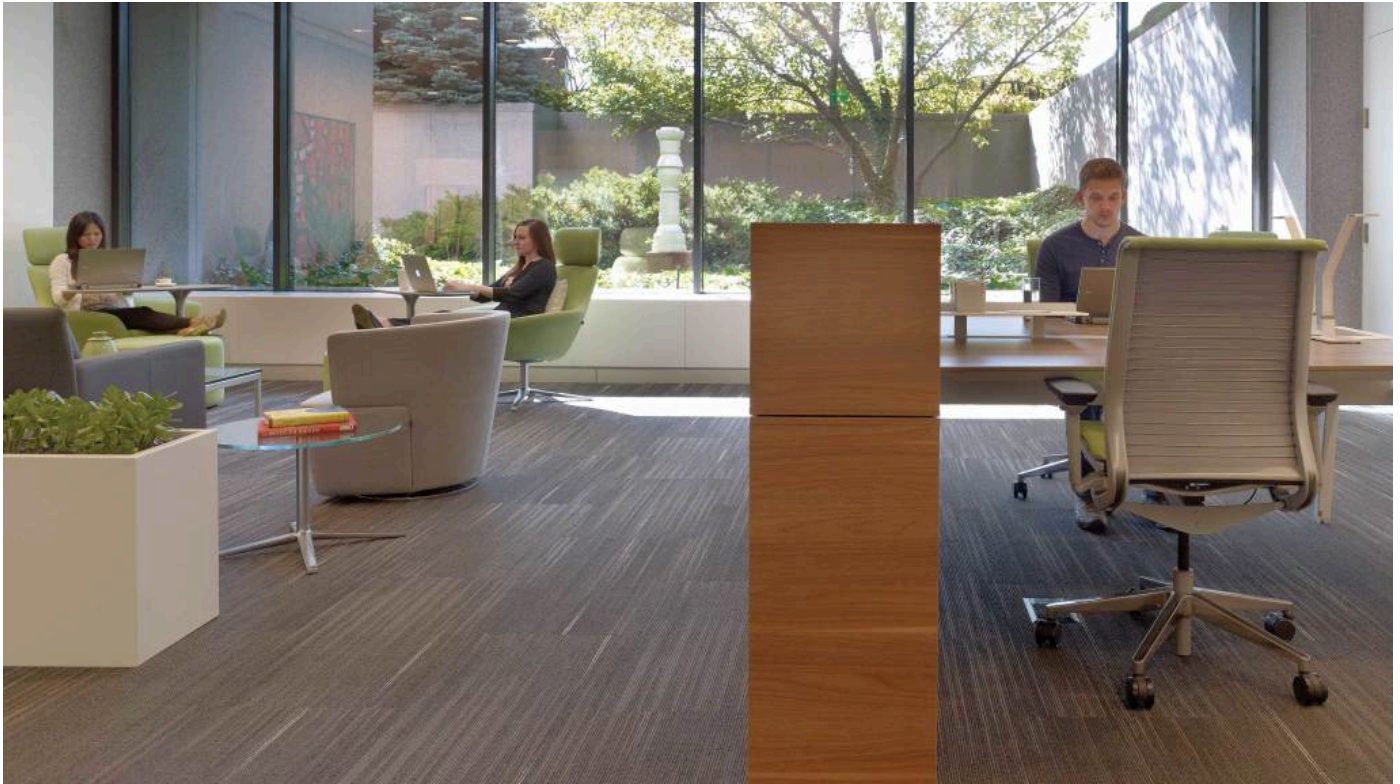


That energetic buzz means a certain level of distraction and a lack of privacy. Phone conversations are almost impossible to conduct and meetings for more than two people are not very productive because it's difficult to share or visually display content. Plus, everyone knows the feeling of struggling to connect to Wi-Fi in a public place, not to mention the lack of power outlets. Many devices run out of power before work is completed, interrupting workflow. And there's the very practical issue: What do you do with your stuff if you just need to use the bathroom or walk around a bit? Are your personal belongings secure?



“We’re seeing that all this mobility is hitting a wall and that people will want to return to the office as firms get smarter and have amenities that coffee shops don’t have. Creating a highly effective corporate third place involves more than access to good coffee and Wi-Fi—it’s about integrating work and life. It’s about creating an environment that supports the wellbeing of people physically, cognitively and emotionally.”

“For organizations there’s an opportunity to provide something so much better than the local coffee shop. There’s a rich opportunity to provide destinations on campus that, yes, have a cool vibe, great coffee and nourishing food, but are also highly functional places to do one’s best work.”



BENEFITS OF THE THIRD PLACE

What is it about that third place, anyway? What gives it its mojo? Lisa Waxman, a professor of interior design in Florida, found that people desire cleanliness, aroma, adequate lighting, comfortable furniture and a view outside in their coffee shop. These characteristics build emotional attachment and describe that nebulous concept, “ambiance.” Steelcase has found that 49 percent of employees say that they don’t have a place with ambiance where they can recharge, reenergize, as well as work—something essential for employees who work longer and longer days and fight burnout. While ambiance is needed, it’s useless without additional functionality for workers.



In addition to ambiance, employees want the ability and the decision-making power to match their work activity with the right work environment. “The idea of having some sort of opportunity to move during the day is important,” says Julie Barnhart-Hoffman, a design principal with Steelcase’s WorkSpace Futures Group. “It’s important to offer employees a place where they can take a break from their usual workspace, choose from spaces ranging from individual to large group settings, and maintain close connections with colleagues and the organization. It resets your mind and gets you reengaged. Having spaces that are appropriately designed for the activity that’s going on makes that activity much more productive.”



“The third place on campus is really beneficial because you have those affordances of more casual work and being in the buzz and feeling connected to others. But because it’s on campus, you also feel that there’s an inherent level of privacy that you don’t have in a public domain. You can have important conversations and not worry about people seeing your screen or overhearing you,” says Barnhart-Hoffman.

AMBIANCE OF A THIRD PLACE

- cleanliness
- aroma
- adequate lighting
- comfortable furniture
- a view outside

Source: Lisa Waxman, Professor, Faculty of Interior Design, Florida State University



TESTING THEORIES

In 2009 Steelcase identified that its 20,000 square-foot cafeteria at headquarters in Grand Rapids, Mich., was an untapped opportunity to optimize its real estate and change its culture at the same time. The cafeteria was only being used during lunch or break hours—and sat empty the rest of the day. Read more about Steelcase's real estate transformation in the [Space Odyssey story](#). It was on the lowest floor and only accessible down a long hallway. And the subdued lighting and circa 1983 burgundy color scheme were hardly inspirational.

A team renovated the space into what is now known as the WorkCafé and transformed the underutilized real estate by creating an on-site third place where people can meet, work, network, socialize and reenergize.

Unlike a typical corporate cafeteria, a WorkCafé provides a combination of working and dining environments. In addition to creative, healthy food and beverage options, it offers workers a variety of work environments that accommodate individual work, as well as small and large group work where people can engage in a wide variety of activities.

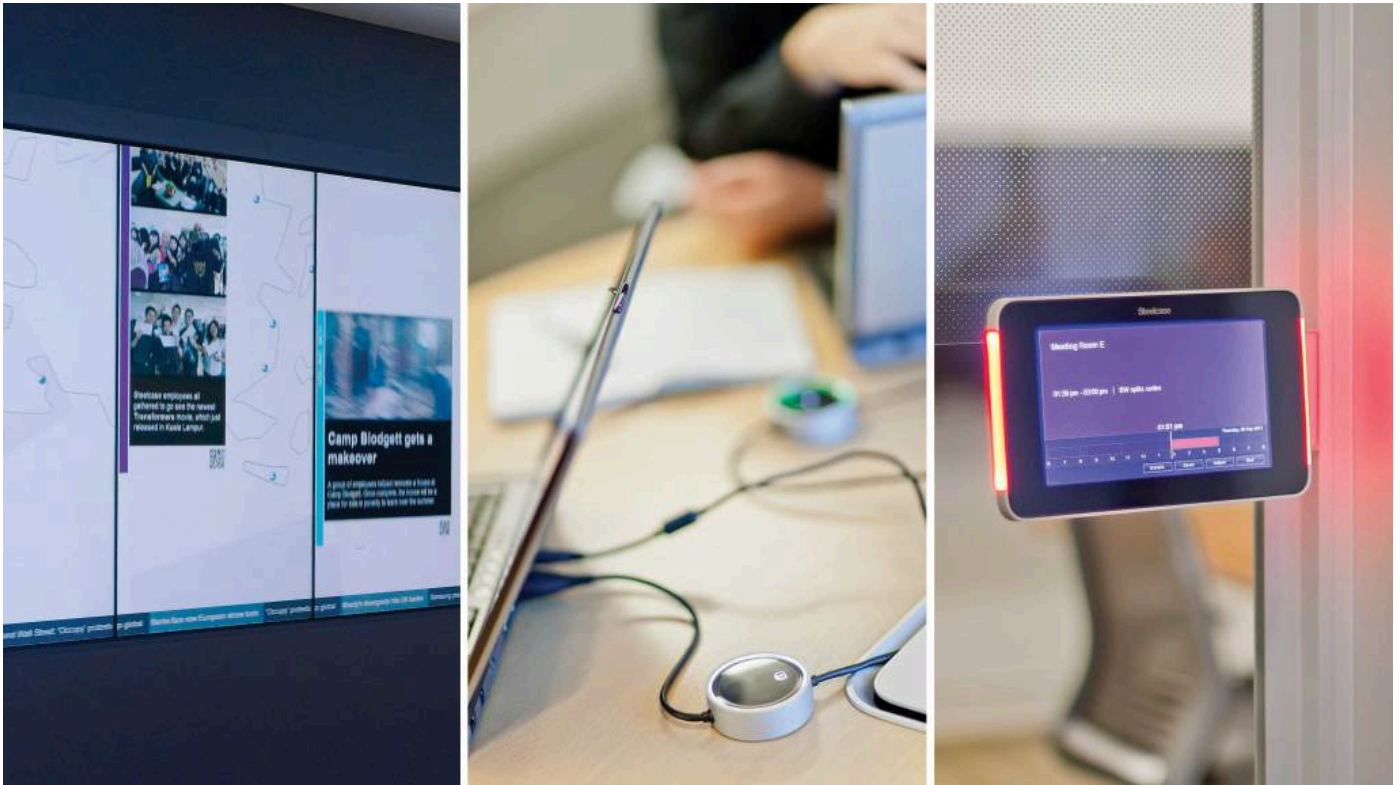


“In the WorkCafé or other corporate third places, people can be more productive and efficient because they have the tools they need,” says Barnhart-Hoffman. “There’s no uncomfortable seating, there’s the right technology. But it’s the vibe that’s the pull. It connects people with colleagues, their work and the organization.”

ELEMENTS OF A SUCCESSFUL CORPORATE THIRD PLACE

Creating a corporate third place is not only the domain of office furniture companies or design firms. And it’s not an option only for organizations with lots of extra space. The concept can be implemented in companies of all types, and it’s scalable for large and small footprints. The key is to approach a third-place project with a tested, successful strategy.

The Steelcase Advanced Applications team identifies three key elements:



TECHNOLOGY INTEGRATION

More than anything, highly effective corporate third places that accommodate real work must provide great technology solutions. Users come to the corporate third place for refreshment and with the expectation that the place will provide what they need for effective performance, so technology needs to be immediately available and convenient. Every mobile worker is familiar with the frustration of unreliable Wi-Fi or limited outlets. Technology must be seamlessly integrated to support effective use of the third place, which in turn facilitates high performance for every user.

Spaces should include technology that supports information sharing, content creation and effective collaboration for local and distributed workers. All spaces should have access to power—even outdoor spaces. Scheduling technology that's integrated into shared spaces assists workers, both on-site and remote, in selecting the best place for their work processes and work styles.

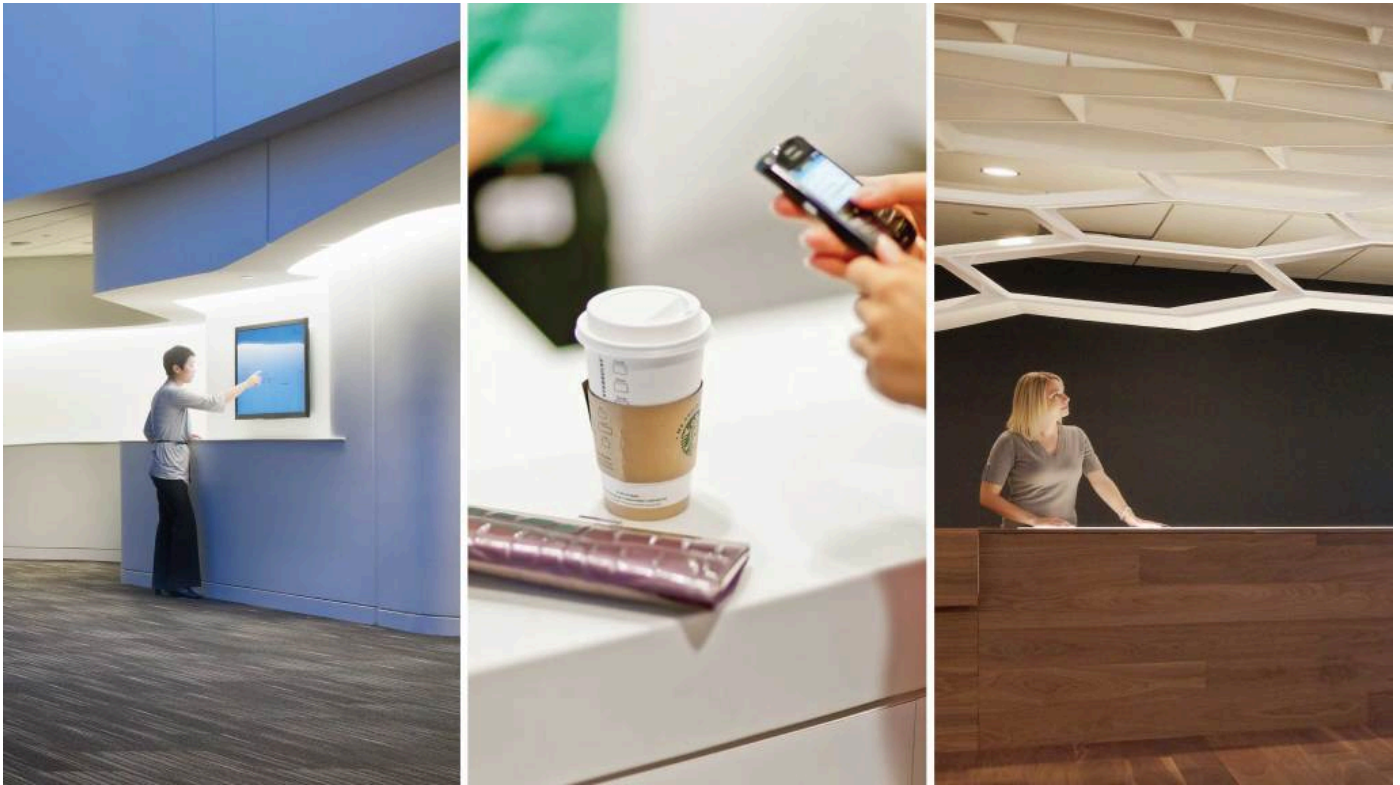


DESIGN ATTRIBUTES

Design elements create the ambience of a corporate third place and, to a great extent, influence worker reaction. Finishes, lighting, music, scent, inspiring artifacts, artwork—these all work together to attract users by creating a sense of welcome. They also tell users how to behave in a space. “If you go into Starbucks, their brand and the design of that experience communicates to customers what is allowed,” says Johnson. “It’s OK to talk in a Starbucks versus if you go into a traditional library, where the space tells you that silence rules.”

“If you look at the WorkCafé, there’s a café and nourishment bar where you can access food all day long,” Johnson says, explaining how Steelcase encourages workers to use the space throughout the workday. If companies want to provide places of refreshment but don’t want employees to linger, they can provide fewer seating options.

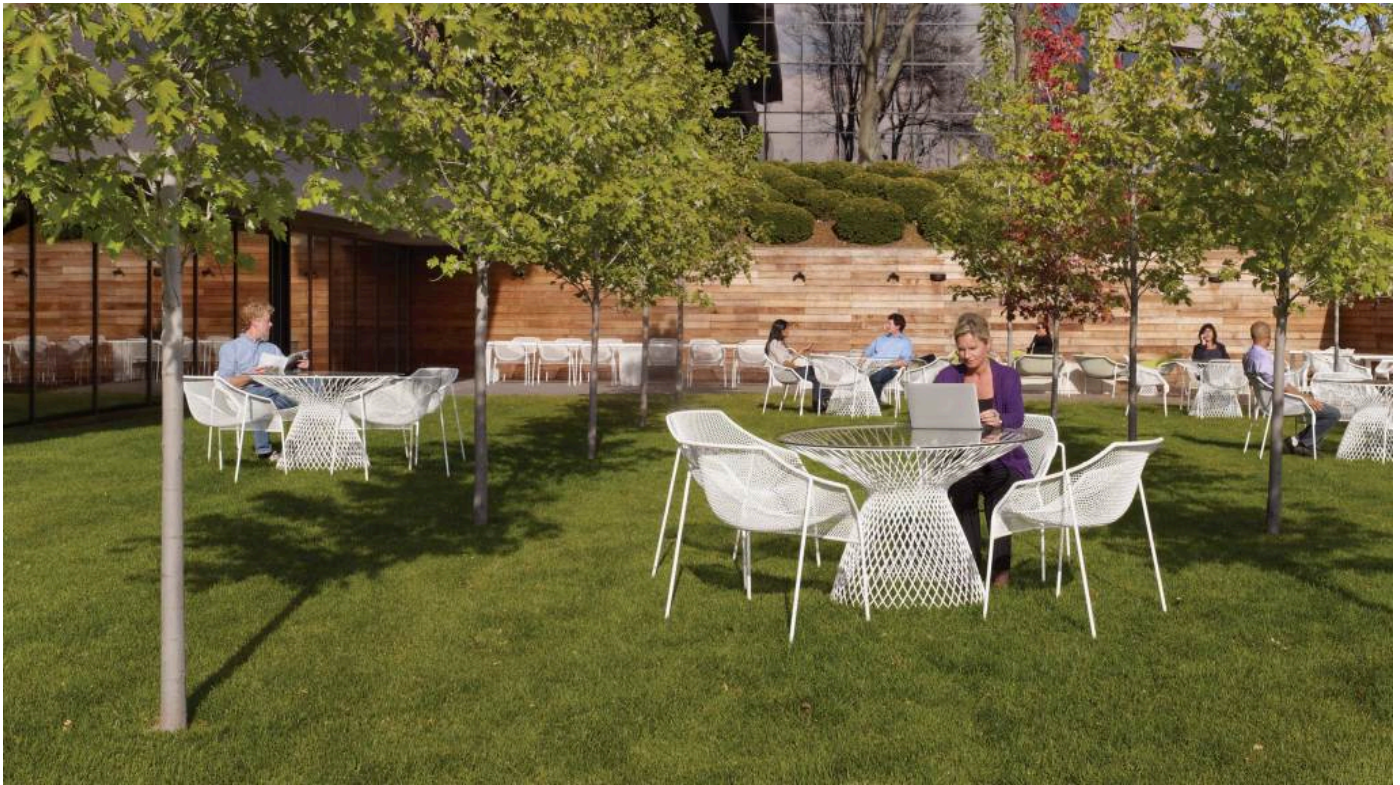
Just as coffee shops offer newspapers, magazines and community bulletin boards, in corporate third places a media wall that presents company news can help employees feel connected to the organization and their colleagues.



HOSTING CHARACTERISTICS

Hosting is ultimately about making employees feel connected to the organization and to each other. The way employees are welcomed and supported lets them know they are valued and demonstrates that the organization recognizes the challenges of work/life integration in a 24/7 global environment. The space should offer services, both self-serve and facilitated, supporting both the individual and work.

Like any environment where people come and go, a corporate third place requires upkeep. “When everybody is using the space, who is taking care of it?” Johnson asks. “Who makes sure the markers and Post-Its are stocked?” At corporate third places, a work concierge can support people while they’re working, just as a hotel concierge supports guests.



WHERE SHOULD YOU LOCATE A THIRD PLACE?

The corporate cafeteria is an obvious place where a company can create a corporate third place and better leverage under-utilized real estate. It isn't the only answer, though. A company might need more locations to hold meetings, for example. Johnson notes that some project groups often go off-site to hotels for meetings: "A floor of meeting spaces creates a destination where people can go for longer meetings, but that doesn't mean they have to sacrifice time for travel," she says.

Johnson also advises companies to "look at where the social exchanges are already happening."

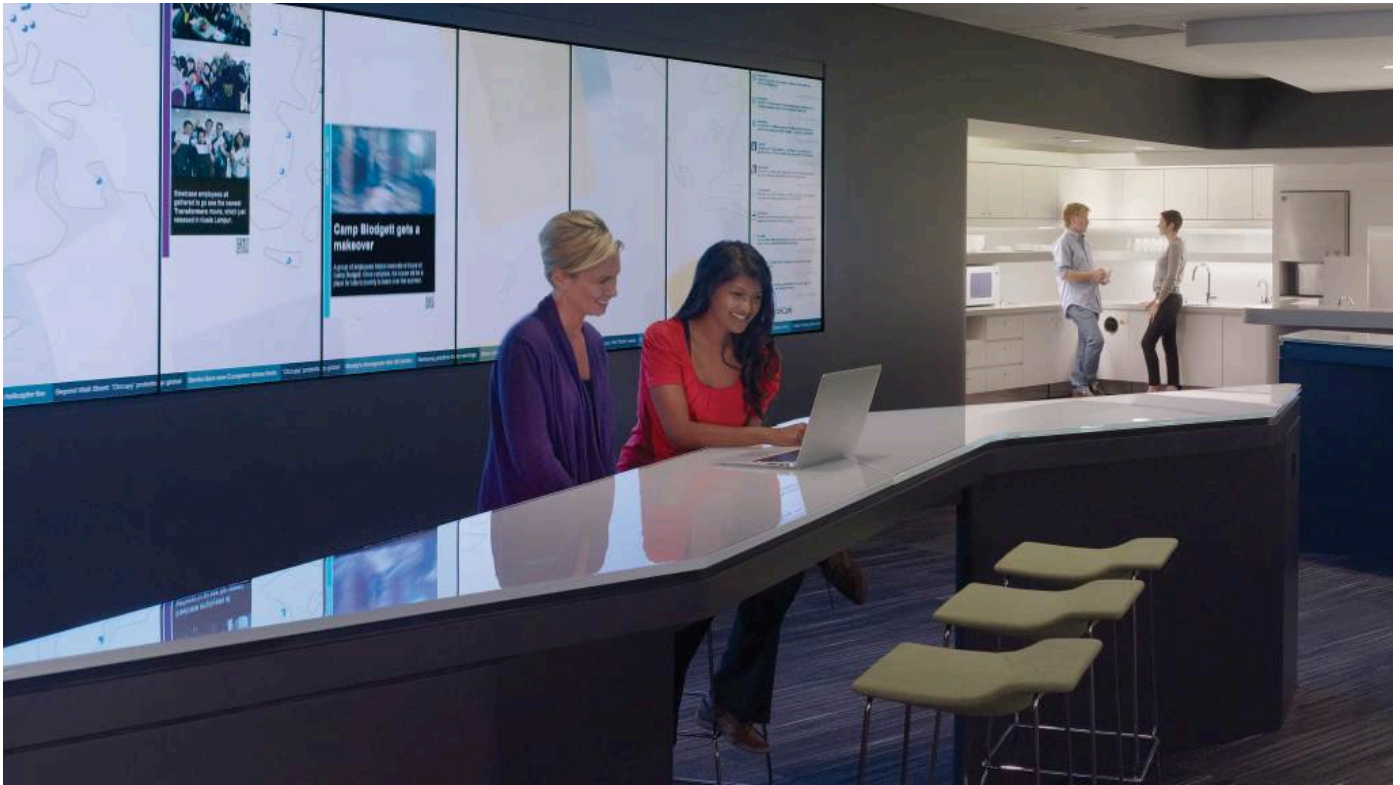
"The third place on campus doesn't have to be a large space. Each department could have a kitchen table, for example, or a big cafeteria could be designed on a more human scale to make people feel at home. It just has to be a space about nurturing social interactions on-site."

CHERIE JOHNSON | Director of Global Design, Steelcase

Exterior spaces can be designed for rejuvenation, and also for serious work. Courtyards, patios, and roof decks that are adjacent to the inside workspace can provide power, Wi-Fi and furnishings to support both individual and team work. "People naturally seek nearby outdoor spaces that afford more choices and control for working," Epstein says. Such outdoor areas become social magnets and restful places to thrive, but also can be highly productive. "When you walk outdoors to have a meeting, you can see a look of refreshment come over people's faces, even when they have a lot of work to accomplish," Epstein says.



A third place doesn't have to be just one company-wide space. Businesses should be thinking about corporate third places at the "business level, neighborhood level and project level," adds Graziano. It can be designed to support the entire company or campus, but at a smaller scale companies can offer a departmental getaway or zones where teams can shift between intense collaboration and relaxation.



RESILIENT REAL ESTATE

To keep an organization's investment in real estate resilient, it's important that it be flexible. Also needed is a consistent feedback loop to make sure the company can learn from and adapt the space over time. Steelcase routinely does utilization studies to see how employees are using the campus real estate to understand what's working and what could be better. Steelcase found that enclosed, individual spaces in the WorkCafé were so heavily used that they needed to add more, distributing them through other work areas and buildings. The company initially had the coffee bar open into the evening to support longer work hours, but found that people were either staying in their work neighborhoods or going home to handle evening conference calls. So the coffee bar hours were adjusted to fit the use pattern. An office build-out that truly supports employee engagement and productivity is never really done—lessons are learned and adjustments can be made over time.

Another critical piece to corporate third places is to make sure that leaders show by example that employees can use the spaces with impunity. As Barnhart-Hoffman says, "Once you build these kind of spaces, if the leadership can be seen in them, then it gives everybody permission to use them, too."

EMPLOYEE ENGAGEMENT: THE BIGGEST ADVANTAGE?

When real estate and finances are limited, organizations might ask if adding a corporate third space to the office is really worth it. Yes, worker productivity, collaboration and worker health are good reasons, but the biggest reason for companies to seriously consider corporate third places is worker engagement.

As Epstein asks: “As the demand for performance continually ratchets up in a competitive marketplace, what do 21st-century workers need and deserve? Something has to give way to create a more humane environment that can sustain the 21st-century workforce. We see physical space as an essential element and our inherent tie to it remains the foundation for where work gets done.”

Ray Oldenburg, [interviewed by 360 Magazine in this issue’s Q+A](#), acknowledges that times have changed since he first did his research. “If you go back 40 years, the thinking in the corporations was: The longer we could keep each employee at the desk, the more the productivity. And that’s just been shot to pieces,” he says. “I think that a corporate third place would have some part in holding on to good people... making sure they get what makes them happy. It should make a difference for the company.”

Fostering higher quality interactions, allowing employees to rejuvenate and helping them to feel inspired will support employee wellbeing, and ultimately lead to higher attraction, retention and engagement. The neighborhood coffee shop might make a good latte, but it can’t top these outcomes.

GO DEEPER

If you want to learn more about the interesting, insightful work being done by thought leaders referenced in our article, here is a menu of resources to choose from:

[WorkCafé Idea Book](#)

Featured Product



Brody