

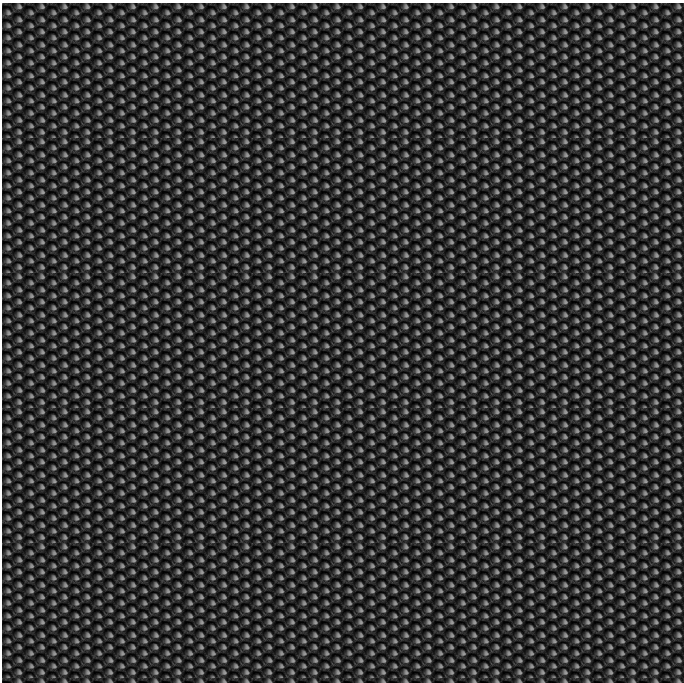
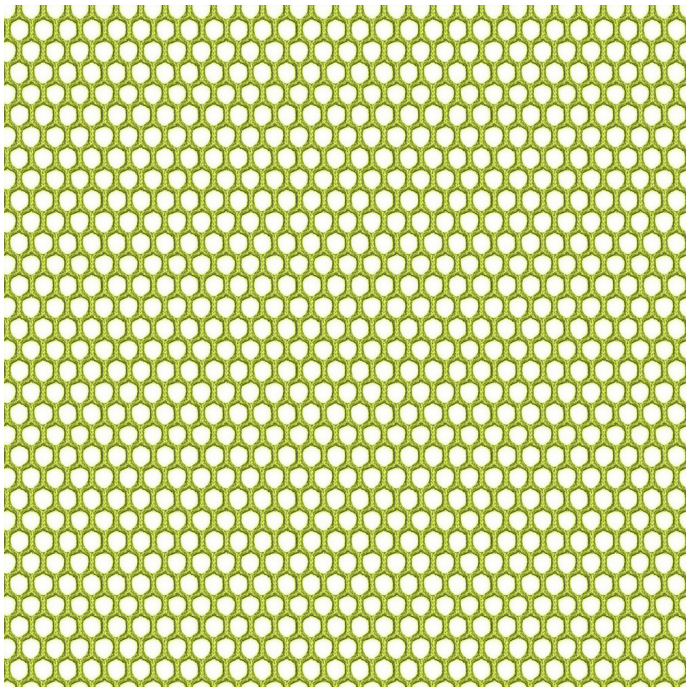
Steelcase

# 3D KNIT

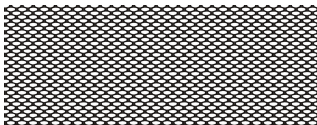
Wasabi 5090

AMER 5089

Materials are displayed for reference and may vary by screen and print quality. Please refer to a physical sample for actual color and detail



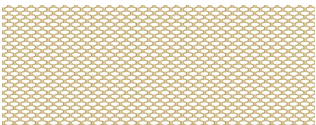
Repeat



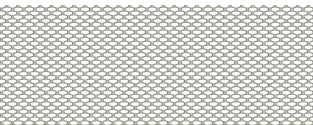
Licorice 5064



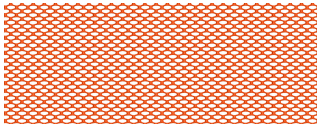
Coconut 5065



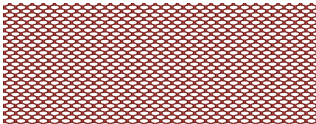
Malt 5066



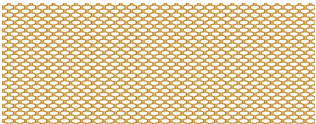
Nickel 5093



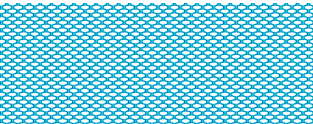
Tangerine 5094



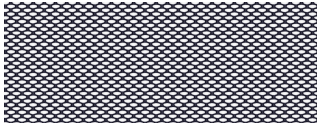
Scarlet 5095



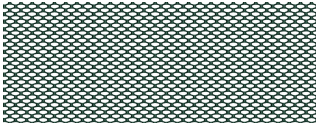
Turmeric/Honey 5096



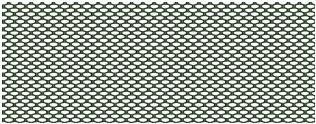
Blue Jay 5098



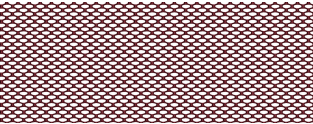
Aubergine 5560



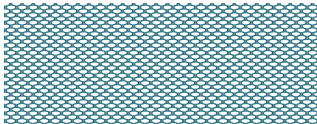
Peacock 5561



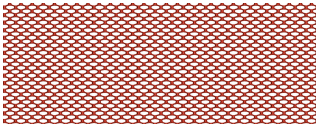
Jungle 5562



Merlot 5563



Lagoon 5564



Saffron 5565

OVERVIEW

Material Type	Knit/Mesh
Price	Price Group 1
Offering	Standard Surfaces
Brand	Steelcase
Content	100% Polyester
Application	Seating Upholstery
Global Availability	Americas, Asia Pacific
Design	Solid, Pattern, Texture

SPECS

Abrasion Wyzenbeek	100,000 Double Rubs
Dry Crocking	Class 4
Wet Crocking	Class 4
Colorfastness to Light	Class 4
Brush Pill	Class 5

CHARACTERISTICS

Fabric Backing	None
Topical Finish	None
Weight	587.6 grams per linear meter
Width	57 Inches
Country of Origin	United States
Warranty	3 Year

**FULL AVAILABILITY**

---

442 GESTURE ASIA PACIFIC (H)

462 LEAP 3DKNIT ASIA PACIFIC (H)

462 LEAP SEWN 3DKNIT ASIA PACIFIC  
(H)

465 THINK 3DKNIT BACK SEWN SEAT  
ASIA PACIFIC (H)

465 THINK SEWN(OLD) 3DKNIT ASIA  
PACIFIC (H)

465 THINK STANDARD(OLD) 3DKNIT  
ASIA PACIFIC (H)

465 THINK VISITOR 3DKNIT ASIA  
PACIFIC (H)

465 THINK VISITOR SEWN 3DKNIT  
ASIA PACIFIC (H)