

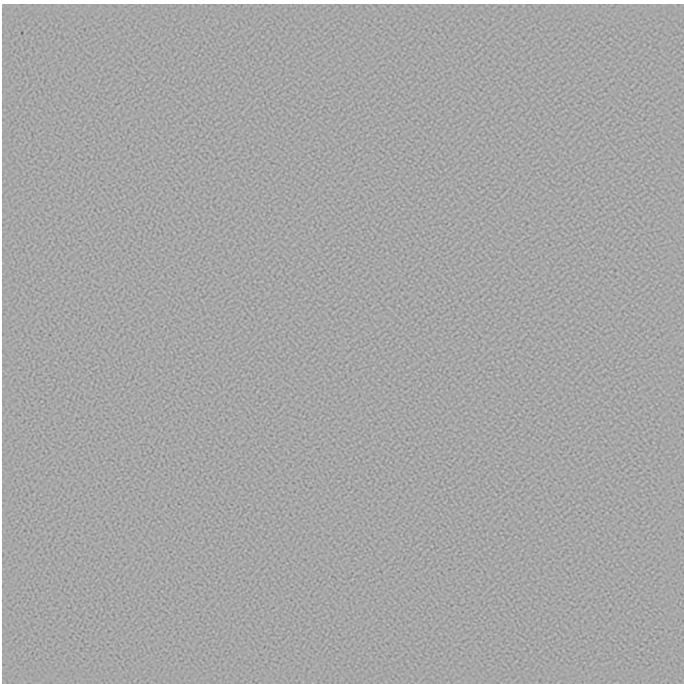
# OMNI-R

Rhino J508

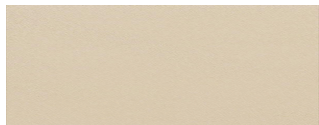
Materials are displayed for reference and may vary by screen and print quality. Please refer to a physical sample for actual color and detail



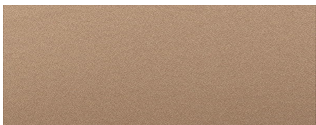
Image Shown: Warp Horizontal



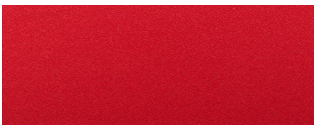
Repeat



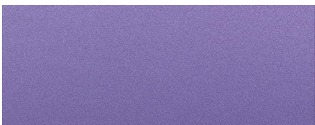
Cloud J521



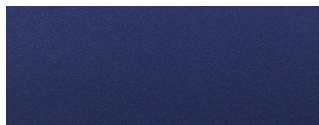
Cocoa J509



Crimson J502



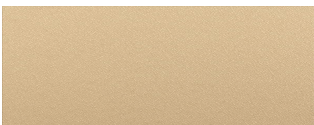
Hydrangea J515



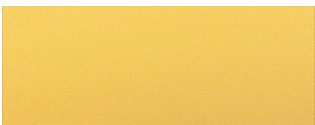
Ink Blue J507



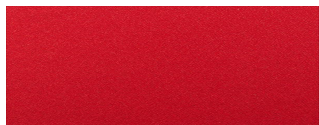
Sapphire J506



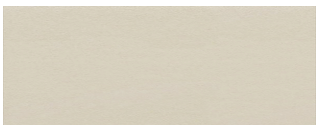
Cork J517



Maize J518



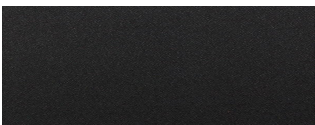
Scarlet J538



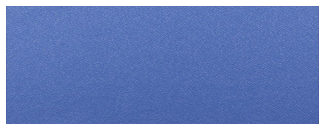
Coconut J535



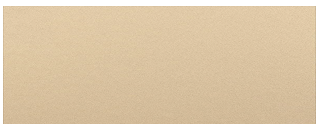
Tangerine J537



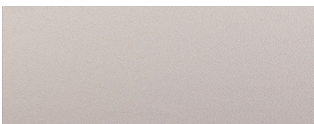
Ebony J501



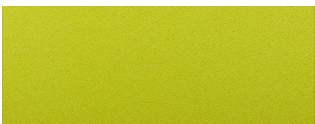
Azure Blue J513



Malt J547



Nickel J544



Wasabi J543

COLORWAYS

---



Blue Jay J541

OVERVIEW

Material Type	Woven
Price	Price Group 1
Offering	Standard Surfaces
Brand	Steelcase
Content	50% Polyester, 50% Recycled Polyester
Application	Seating Upholstery, Vertical Surface
Global Availability	Asia Pacific
Cleaning Code	S
Design	Solid

SPECS

Abrasion Wyzenbeek	60,000 Double Rubs
Dry Crocking	Class 4
Wet Crocking	Class 4
Colorfastness to Light	Class 4

CHARACTERISTICS

Fabric Backing	Acrylic
Topical Finish	Water and Stain Repellant
Weight	11815.2 grams per linear meter
Width	180 cm
Country of Origin	Taiwan
Warranty	3 Year

**FULL AVAILABILITY**

---

435 SERIES 1 ASIA PACIFIC (H)	FRAMEONE ASIA PACIFIC (H)
442 GESTURE ASIA PACIFIC (H)	LET'S B ASIA PACIFIC (H)
462 LEAP 3DKNIT ASIA PACIFIC (H)	LEXICON ASIA PACIFIC (H)
462 LEAP ASIA PACIFIC (H)	MIGRATION ASIA PACIFIC (H)
462 LEAP SEWN 3DKNIT ASIA PACIFIC (H)	MOBY SYSTEM ASIA PACIFIC (H)
462 LEAP SEWN ASIA PACIFIC (H)	NAVI TEAMISLAND ASIA PACIFIC (H)
465 THINK 3DKNIT BACK SEWN SEAT ASIA PACIFIC (H)	PERSONALITY 3DKNIT ASIA PACIFIC (H)
465 THINK SEWN(OLD) 3DKNIT ASIA PACIFIC (H)	PERSONALITY ASIA PACIFIC (H)
465 THINK SEWN(OLD) ASIA PACIFIC (H)	SIT-2-STAND ASIA PACIFIC (H)
465 THINK STANDARD(OLD) 3DKNIT ASIA PACIFIC (H)	
465 THINK STANDARD(OLD) ASIA PACIFIC (H)	
465 THINK UPH BACK SEWN SEAT ASIA PACIFIC (H)	
465 THINK VISITOR 3DKNIT ASIA PACIFIC (H)	
465 THINK VISITOR SEWN 3DKNIT ASIA PACIFIC (H)	
465 THINK VISITOR SEWN ASIA PACIFIC (H)	
466 REPLY GUEST SEWN ASIA PACIFIC (H)	
466 REPLY GUEST STNDARD ASIA PACIFIC (H)	
466 REPLY TASK SEWN ASIA PACIFIC (H)	
466 REPLY TASK STANDARD ASIA PACIFIC (H)	
AP STORAGE ASIA PACIFIC (H)	
DIVISIO ASIA PACIFIC (H)	
DOUE ASIA PACIFIC (H)	
EXECUTIVE COLLECTION ASIA PACIFIC (H)	
FE-3 ASIA PACIFIC (H)	
FORWARD ASIA PACIFIC (H)	