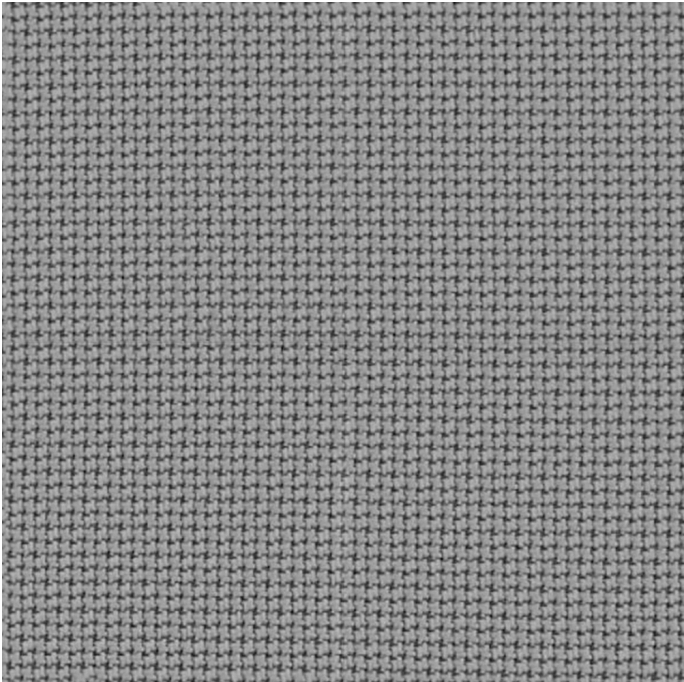
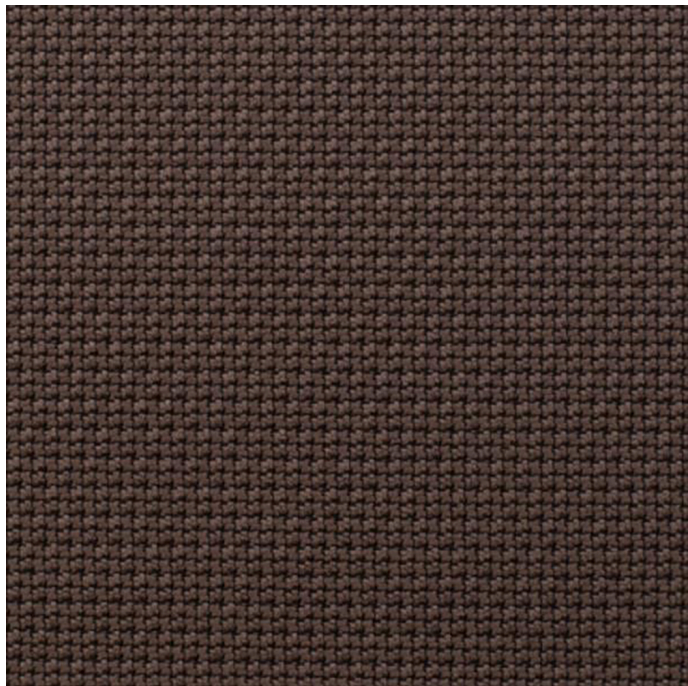


Steelcase

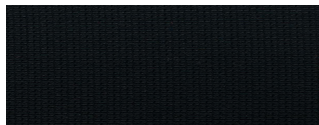
CROSS CHECK

Otter CC10

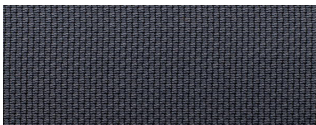
Materials are displayed for reference and may vary by screen and print quality. Please refer to a physical sample for actual color and detail



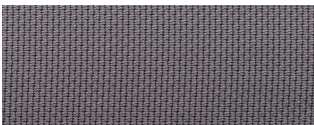
Repeat



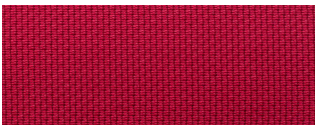
Slate Black CC16



Basalt CC15



Platinum CC14



Cranberry CC01

OVERVIEW

Material Type	Woven
Price	Price Group 2
Offering	Standard Surfaces
Brand	Steelcase
Content	100% Polyester
Application	Seating Upholstery
Global Availability	Europe, Middle East, Africa, Asia Pacific
Cleaning Code	S

SPECS

Abrasion Wyzenbeek	60,000 Double Rubs
Dry Crocking	Class 4
Wet Crocking	Class 4
Colorfastness to Light	Class 4

CHARACTERISTICS

Fabric Backing	Acrylic
Topical Finish	Water and Stain Repellant
Horizontal Repeat	0.15
Vertical Repeat	0.33
Weight	309.3 grams per linear meter
Country of Origin	Taiwan
Warranty	3 Year

FULL AVAILABILITY

435 SERIES 1 ASIA PACIFIC (H)

442 GESTURE ASIA PACIFIC (H)

462 LEAP 3DKNIT ASIA PACIFIC (H)

462 LEAP ASIA PACIFIC (H)

462 LEAP SEWN 3DKNIT ASIA PACIFIC
(H)

462 LEAP SEWN ASIA PACIFIC (H)

465 THINK 3DKNIT BACK SEWN SEAT
ASIA PACIFIC (H)

465 THINK SEWN(OLD) 3DKNIT ASIA
PACIFIC (H)

465 THINK SEWN(OLD) ASIA PACIFIC
(H)

465 THINK STANDARD(OLD) 3DKNIT
ASIA PACIFIC (H)

465 THINK STANDARD(OLD) ASIA
PACIFIC (H)

465 THINK UPH BACK SEWN SEAT
ASIA PACIFIC (H)

465 THINK VISITOR 3DKNIT ASIA
PACIFIC (H)

465 THINK VISITOR ASIA PACIFIC (H)

465 THINK VISITOR SEWN 3DKNIT
ASIA PACIFIC (H)

465 THINK VISITOR SEWN ASIA
PACIFIC (H)

466 REPLY GUEST SEWN ASIA PACIFIC
(H)

466 REPLY GUEST STNDARD ASIA
PACIFIC (H)

466 REPLY TASK SEWN ASIA PACIFIC
(H)

466 REPLY TASK STANDARD ASIA
PACIFIC (H)

B FREE CUBE ASIA PACIFIC (H)

B FREE LOUNGE ASIA PACIFIC (H)

LET'S B ASIA PACIFIC (H)

MEDIASCAPE ASIA PACIFIC (H)

TURNSTONE CAMPFIRE ASIA PACIFIC
(H)



Visit [Steelcase.com](https://www.steelcase.com)

©2020 Steelcase Inc. All rights reserved. All specifications subject to change without notice.
Trademarks used herein are the property of Steelcase Inc. or of their respective owners.