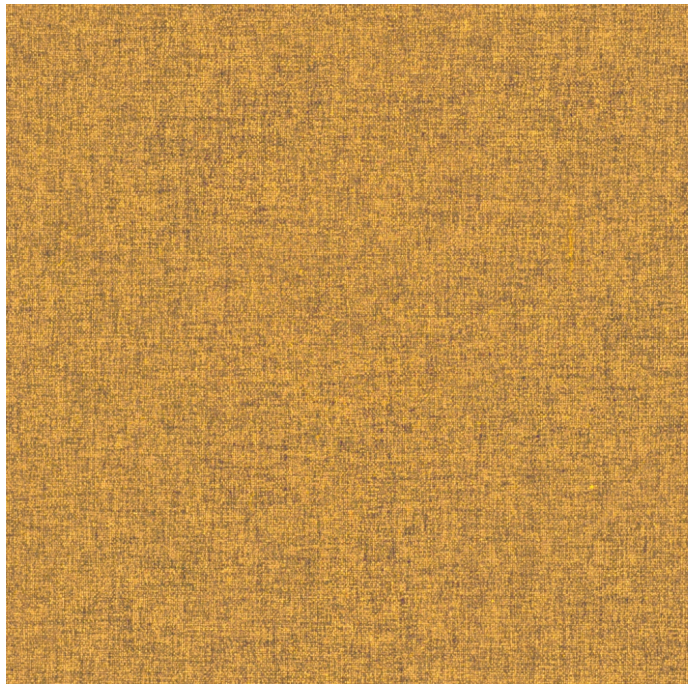


Steelcase

OTTO

Honey K605

Materials are displayed for reference and may vary by screen and print quality. Please refer to a physical sample for actual color and detail



Charcoal K615



Ash K614



Iron K613



Smoke K612



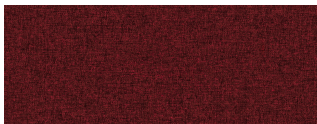
Bluestone K611



Lagoon K610



Aubergine K609



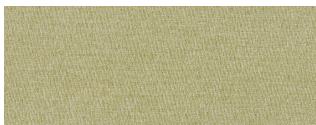
Merlot K608



Saffron K607



Coral K606



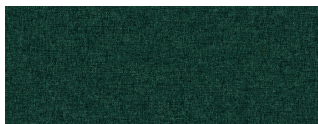
Grass K604



Olive K603



Lizard K602



Peacock K601

OVERVIEW

Material Type	Woven
Price	Price Group 1
Offering	Standard Surfaces
Brand	Steelcase
Content	100% Polyester
Application	Vertical Surface, Seating Upholstery
Global Availability	Asia Pacific
Cleaning Code	WS
Design	Solid

SPECS

Abrasion Wyzenbeek	100,000 Double Rubs
Dry Crocking	Class 5
Wet Crocking	Class 5
Colorfastness to Light	Class 4.5
Brush Pill	Class 5

CHARACTERISTICS

Fabric Backing	Acrylic
Topical Finish	None
Weight	259.8 grams per linear meter
Width	66 Inches
Country of Origin	China
Warranty	3 Year