

Steelcase

NEW BLACK HENRY

Henry 5J11

AMER 5J11

Materials are displayed for reference and may vary by screen and print quality. Please refer to a physical sample for actual color and detail

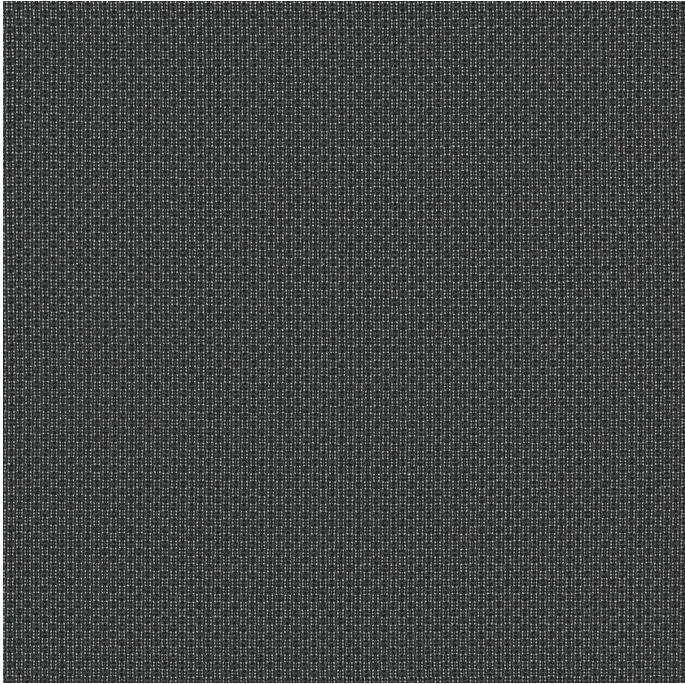
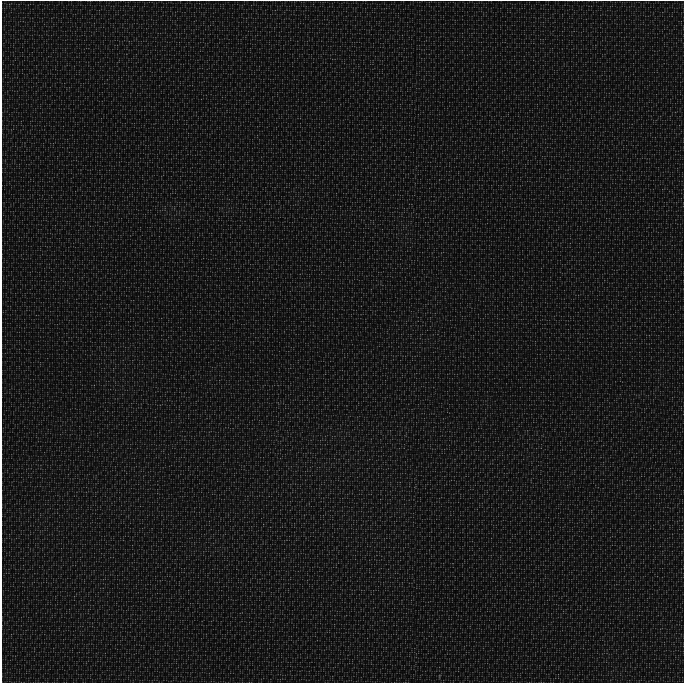


Image Shown: Warp Horizontal



Repeat

Steelcase

NEW BLACK HENRY

OVERVIEW

| | |
|---------------------|---|
| Material Type | Woven |
| Price | Price Group 2 |
| Offering | Standard Surfaces |
| Brand | Steelcase |
| Content | 100% Total Recycled Content; 100% Pre-Consumer Recycled Polyester |
| Application | Seating Upholstery |
| Global Availability | Americas, Asia Pacific |
| Cleaning Code | WS |
| Bleach Cleanable | Yes |
| Design | Pattern, Texture |

SPECS

| | |
|------------------------|---------------------|
| Abrasion Wyzenbeek | 100,000 Double Rubs |
| Dry Crocking | Class 4.5 |
| Wet Crocking | Class 4.5 |
| Colorfastness to Light | Class 4.5 |
| Brush Pill | Class 5 |

CHARACTERISTICS

| | |
|-------------------|------------------------------|
| Fabric Backing | None |
| Topical Finish | None |
| Weight | 321.6 grams per linear meter |
| Width | 56 inches |
| Country of Origin | Canada |
| Warranty | 3 Year |

Steelcase
NEW BLACK HENRY

FULL AVAILABILITY

435 SERIES 1 ASIA PACIFIC (H)

442 GESTURE ASIA PACIFIC (H)

462 LEAP 3DKNIT ASIA PACIFIC (H)

462 LEAP ASIA PACIFIC (H)

462 LEAP SEWN 3DKNIT ASIA PACIFIC
(H)

462 LEAP SEWN ASIA PACIFIC (H)

465 THINK 3DKNIT BACK SEWN SEAT
ASIA PACIFIC (H)

465 THINK SEWN(OLD) 3DKNIT ASIA
PACIFIC (H)

465 THINK SEWN(OLD) ASIA PACIFIC
(H)

465 THINK STANDARD(OLD) 3DKNIT
ASIA PACIFIC (H)

465 THINK STANDARD(OLD) ASIA
PACIFIC (H)

465 THINK UPH BACK SEWN SEAT
ASIA PACIFIC (H)

465 THINK VISITOR 3DKNIT ASIA
PACIFIC (H)

465 THINK VISITOR ASIA PACIFIC (H)

465 THINK VISITOR SEWN 3DKNIT
ASIA PACIFIC (H)

465 THINK VISITOR SEWN ASIA
PACIFIC (H)

466 REPLY GUEST SEWN ASIA PACIFIC
(H)

466 REPLY GUEST STNDARD ASIA
PACIFIC (H)

466 REPLY TASK SEWN ASIA PACIFIC
(H)

466 REPLY TASK STANDARD ASIA
PACIFIC (H)

B FREE CUBE ASIA PACIFIC (H)

B FREE LOUNGE ASIA PACIFIC (H)

MEDIASCAPE ASIA PACIFIC (H)

PERSONALITY 3DKNIT ASIA PACIFIC
(H)

TURNSTONE CAMPFIRE ASIA PACIFIC
(H)

Steelcase

Visit [Steelcase.com](https://www.steelcase.com)

©2020 Steelcase Inc. All rights reserved. All specifications subject to change without notice.
Trademarks used herein are the property of Steelcase Inc. or of their respective owners.