

Steelcase

# 3D MICROKNIT

Graphite 5T29

AMER 5T29

EMEA 5T29

Materials are displayed for reference and may vary by screen and print quality. Please refer to a physical sample for actual color and detail

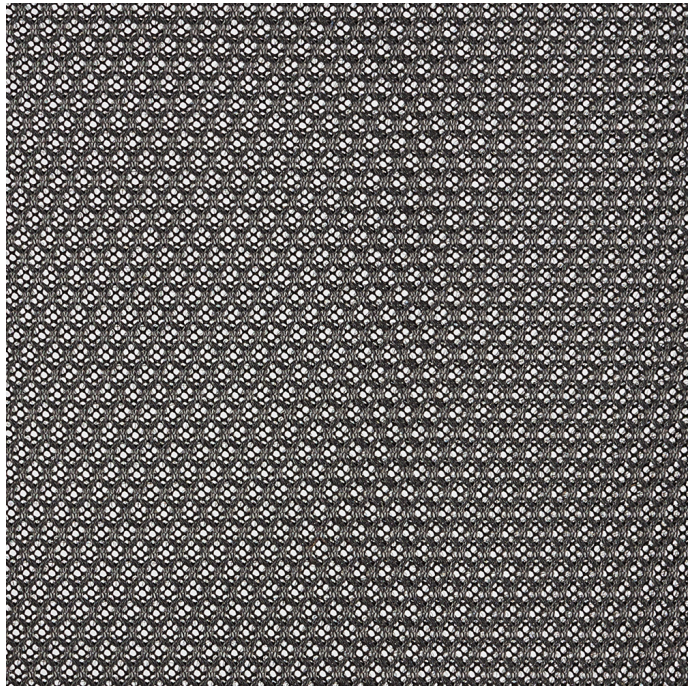
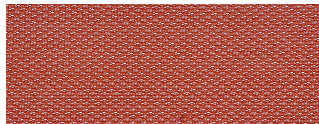


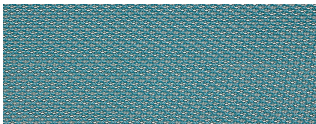
Image Shown: Warp Horizontal



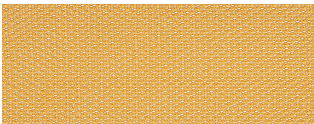
Repeat



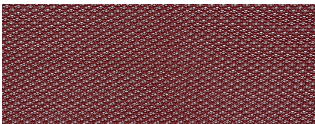
Saffron 5T38



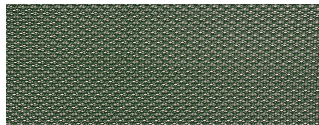
Lagoon 5T37



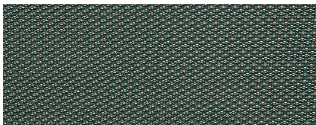
Honey 5T36



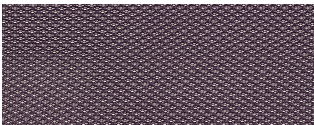
Merlot 5T35



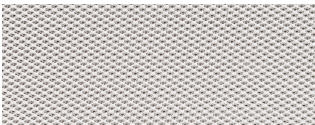
Jungle 5T34



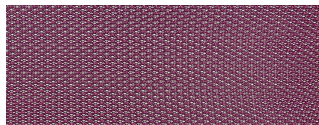
Peacock 5T33



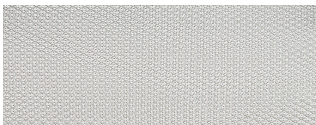
Aubergine 5T32



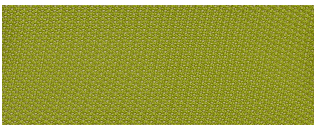
Seagull 5T31



Concord 5T28



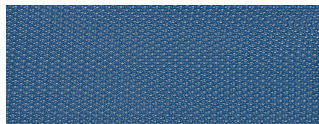
Nickel 5T20



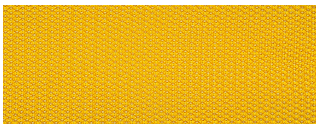
Wasabi 5T26



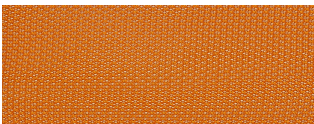
Scarlet 5T24



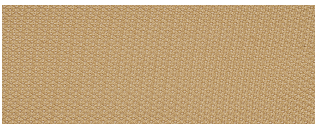
Royal Blue 5T22



Canary 5T30



Tangerine 5T27

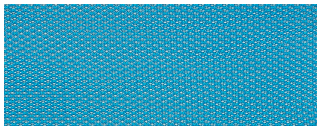


Malt 5T25

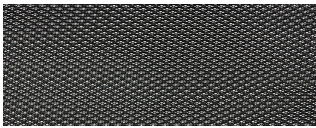


COLORWAYS

---



Blue Jay 5T23



Licorice 5T21



OVERVIEW

Material Type	Knit/Mesh
Price	Price Group 1
Offering	Standard Surfaces
Brand	Steelcase
Content	100% Polyester
Application	Seating Upholstery
Global Availability	Americas, Europe, Middle East, Africa, Asia Pacific
Cleaning Code	WS
Design	Solid, Pattern, Texture
Sustainability	Oeko-Tex® Standard 100

SPECS

Abrasion Wyzenbeek	100,000 Double Rubs
Dry Crocking	Class 4.5
Wet Crocking	Class 4.5
Colorfastness to Light	Class 4

CHARACTERISTICS

Fabric Backing	None
Topical Finish	None
Weight	587.6 grams per linear meter
Width	54 Inches
Country of Origin	United States
Warranty	3 Year



435 SERIES 1 ASIA PACIFIC (H)