

Designtex

BRUSHED FLANNEL

Flame 3797/702

AMER 3797/702

Materials are displayed for reference and may vary by screen and print quality. Please refer to a physical sample for actual color and detail

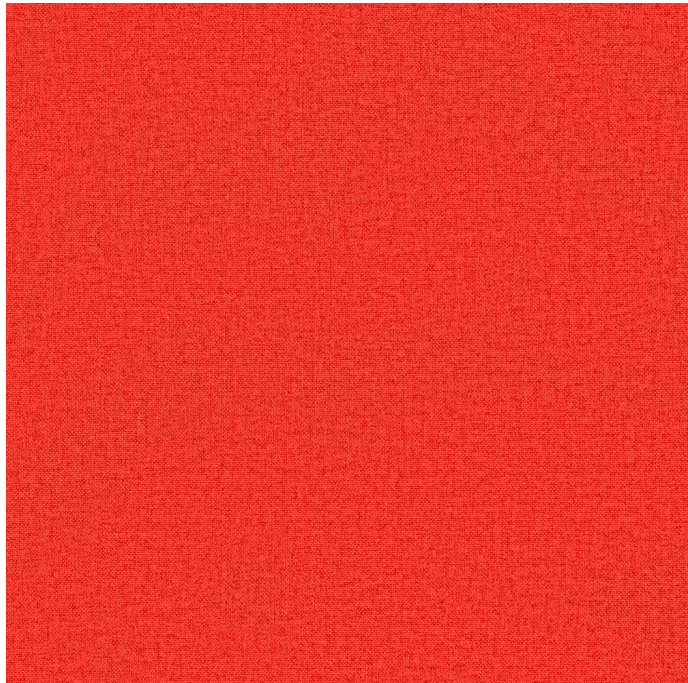
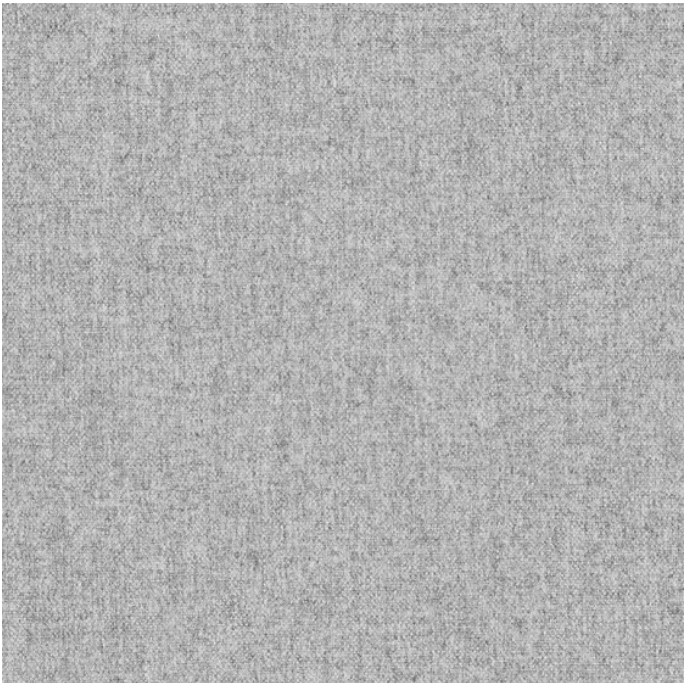


Image Shown: Warp Vertical



Repeat



Navy 3797/404



Creme 3797/101



Antelope 3797/102



Black 3797/804



Charcoal 3797/803



Medium Grey 3797/802



Light Grey 3797/801



Tangerine 3797/701



Snap Pea 3797/501



Medium Brown 3797/103



Blue 3797/403



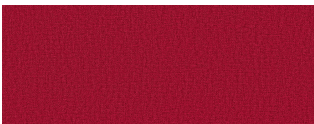
Turquoise 3797/402



Blue Stone 3797/401



Wine 3797/302



Dark Red 3797/301



Yellow Gold 3797/202

Designtex
BRUSHED FLANNEL

COLORWAYS







Yellow Green 3797/201



Brown 3797/104

Designtex
BRUSHED FLANNEL

OVERVIEW

| | |
|---------------------|---|
| Material Type | Woven |
| Price | Price Group 3 |
| Offering | Designtex Select Surfaces, Select Surfaces |
| Brand | Steelcase |
| Content | 100% Polyester |
| Application | Seating Upholstery |
| Global Availability | Asia Pacific, Americas |
| Cleaning Code | WS |
| Design | Texture |
| ACT |     |

SPECS

| | |
|------------------------|--|
| Abrasion Wyzenbeek | 45,000 Double Rubs |
| Dry Crocking | Class 4 |
| Wet Crocking | Class 4 |
| Colorfastness to Light | Class 5 |
| Brush Pill | Class 4 |
| Fire Retardancy | Please check the COM database for CAL 133 results on this fabric |

CHARACTERISTICS

| | |
|-------------------|------------------------------|
| Fabric Backing | None |
| Topical Finish | None |
| Weight | 525.8 grams per linear meter |
| Width | 142 cm |
| Country of Origin | China |
| Warranty | Warrantied By Supplier |

FULL AVAILABILITY

442 GESTURE ASIA PACIFIC (H)

462 LEAP 3DKNIT ASIA PACIFIC (H)

462 LEAP ASIA PACIFIC (H)

462 LEAP SEWN 3DKNIT ASIA PACIFIC
(H)

462 LEAP SEWN ASIA PACIFIC (H)

465 THINK 3DKNIT BACK SEWN SEAT
ASIA PACIFIC (H)

465 THINK SEWN(OLD) 3DKNIT ASIA
PACIFIC (H)

465 THINK SEWN(OLD) ASIA PACIFIC
(H)

465 THINK STANDARD(OLD) 3DKNIT
ASIA PACIFIC (H)

465 THINK STANDARD(OLD) ASIA
PACIFIC (H)

465 THINK UPH BACK SEWN SEAT
ASIA PACIFIC (H)

465 THINK VISITOR 3DKNIT ASIA
PACIFIC (H)

465 THINK VISITOR ASIA PACIFIC (H)

465 THINK VISITOR SEWN 3DKNIT
ASIA PACIFIC (H)

465 THINK VISITOR SEWN ASIA
PACIFIC (H)

466 REPLY GUEST STNDARD ASIA
PACIFIC (H)

MEDIASCAPE ASIA PACIFIC (H)

TURNSTONE CAMPFIRE ASIA PACIFIC
(H)