

Designtex

ADLER

Cactus 3661/503

AMER 3661/503

Materials are displayed for reference and may vary by screen and print quality. Please refer to a physical sample for actual color and detail

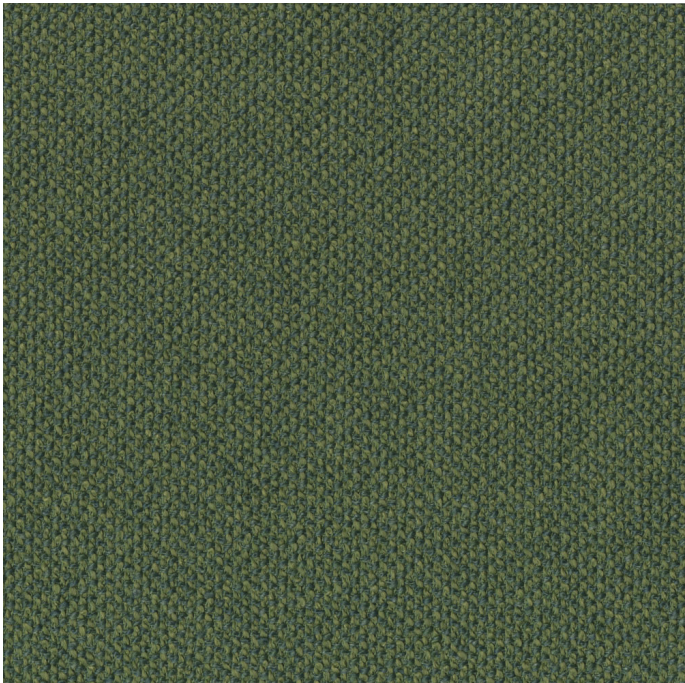
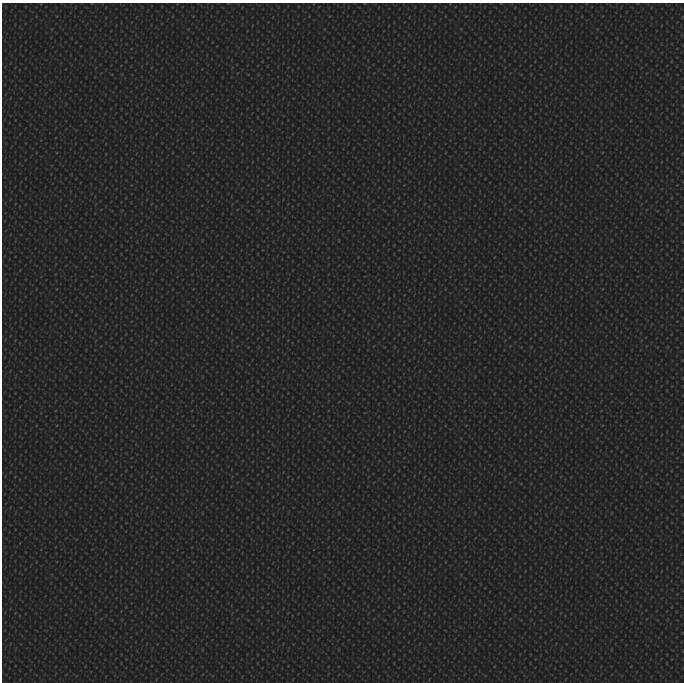
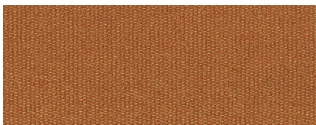


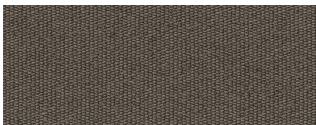
Image Shown: Warp Vertical



Repeat



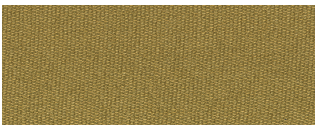
Clementine 3661/701



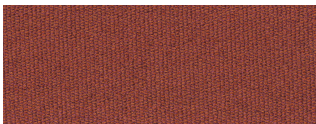
Sable 3661/101



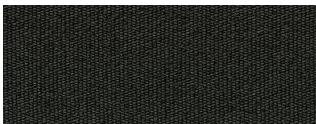
Espresso 3661/102



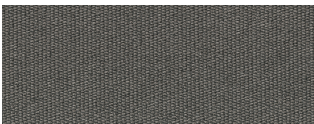
Daffodil 3661/201



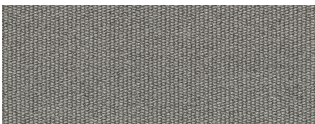
Tiger Lily 3661/901



Shadow 3661/804



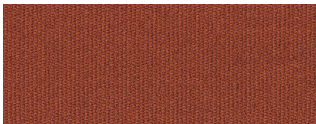
Mouse 3661/803



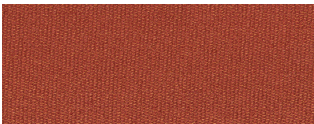
Fog 3661/802



Cumulus 3661/801



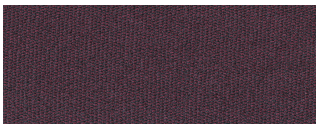
Tomato 3661/702



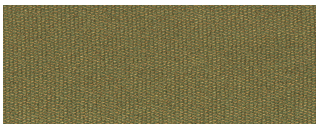
Grapefruit 3661/301



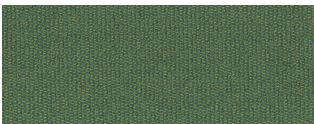
Amethyst 3661/602



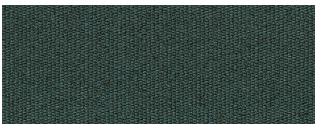
Orchid 3661/601



Meadow 3661/502



Peacock 3661/501



Cerulean 3661/403

COLORWAYS

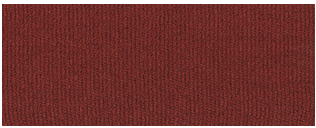
---



Hydrangea 3661/402




Indigo 3661/401



Pomegranate 3661/302

OVERVIEW

Material Type	Woven
Price	Price Group 5
Offering	Designtex Select Surfaces, Select Surfaces
Brand	Steelcase
Content	100% Polyester
Application	Seating Upholstery
Global Availability	Asia Pacific, Americas
Cleaning Code	WS
Design	Texture
ACT	

SPECS

Abrasion Wyzenbeek	90,000 Double Rubs
Dry Crocking	Class 4
Wet Crocking	Class 3.5
Colorfastness to Light	Class 4
Brush Pill	Class 4
Fire Retardancy	Please check the COM database for CAL 133 results on this fabric

CHARACTERISTICS

Fabric Backing	Acrylic
Topical Finish	Stain Repellent
Weight	636.8 grams per linear meter
Width	140 cm
Country of Origin	Turkey
Warranty	Warrantied By Supplier

**FULL AVAILABILITY**

---

462 LEAP 3DKNIT ASIA PACIFIC (H)

462 LEAP ASIA PACIFIC (H)

466 REPLY GUEST STNDARD ASIA  
PACIFIC (H)

MEDIASCAPE ASIA PACIFIC (H,V)

TURNSTONE CAMPFIRE ASIA PACIFIC  
(H,V)