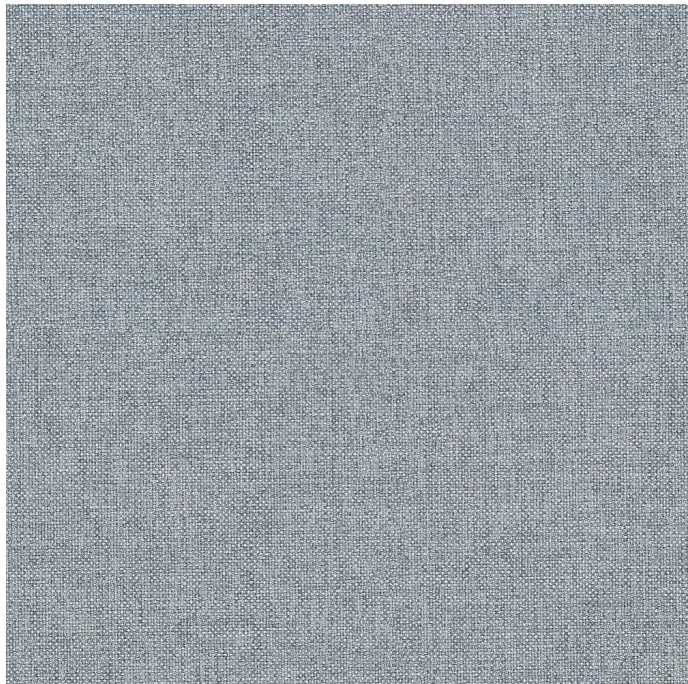


Steelcase

OTTO

Bluestone K611

Materials are displayed for reference and may vary by screen and print quality. Please refer to a physical sample for actual color and detail



Charcoal K615



Ash K614



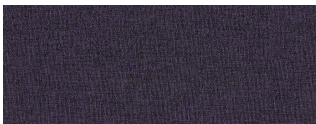
Iron K613



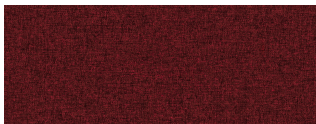
Smoke K612



Lagoon K610



Aubergine K609



Merlot K608



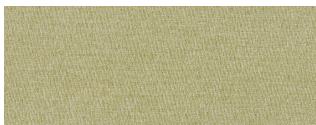
Saffron K607



Coral K606



Honey K605



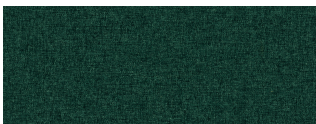
Grass K604



Olive K603



Lizard K602



Peacock K601

OVERVIEW

| | |
|---------------------|--------------------------------------|
| Material Type | Woven |
| Price | Price Group 1 |
| Offering | Standard Surfaces |
| Brand | Steelcase |
| Content | 100% Polyester |
| Application | Vertical Surface, Seating Upholstery |
| Global Availability | Asia Pacific |
| Cleaning Code | WS |
| Design | Solid |

SPECS

| | |
|------------------------|---------------------|
| Abrasion Wyzenbeek | 100,000 Double Rubs |
| Dry Crocking | Class 5 |
| Wet Crocking | Class 5 |
| Colorfastness to Light | Class 4.5 |
| Brush Pill | Class 5 |

CHARACTERISTICS

| | |
|-------------------|------------------------------|
| Fabric Backing | Acrylic |
| Topical Finish | None |
| Weight | 259.8 grams per linear meter |
| Width | 66 Inches |
| Country of Origin | China |
| Warranty | 3 Year |