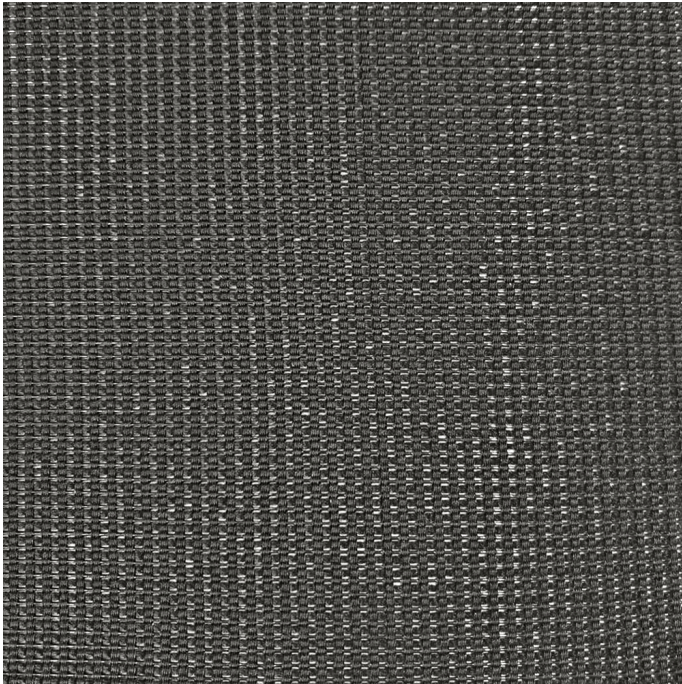


Steelcase

YM MESH

Black YM01

Materials are displayed for reference and may vary by screen and print quality. Please refer to a physical sample for actual color and detail



OVERVIEW

Material Type	Knit/Mesh
Price	Price Group 2
Offering	Standard Surfaces
Brand	Steelcase
Content	45% Polyester, 55% Elastomer
Application	Seating Upholstery
Global Availability	Asia Pacific
Cleaning Code	WS
Design	Solid

SPECS

Abrasion Wyzenbeek	60,000 Double Rubs
Dry Crocking	Class 4
Wet Crocking	Class 4
Colorfastness to Light	Class 4

CHARACTERISTICS

Fabric Backing	None
Topical Finish	None
Weight	17011.5 grams per linear meter
Width	152 cm
Country of Origin	China
Warranty	3 Year

FULL AVAILABILITY

466 REPLY GUEST SEWN ASIA PACIFIC
(H,V)