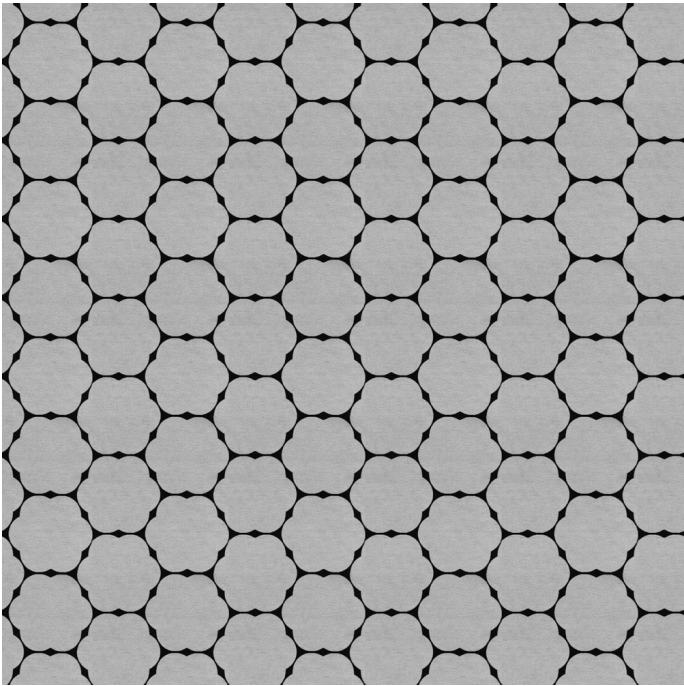
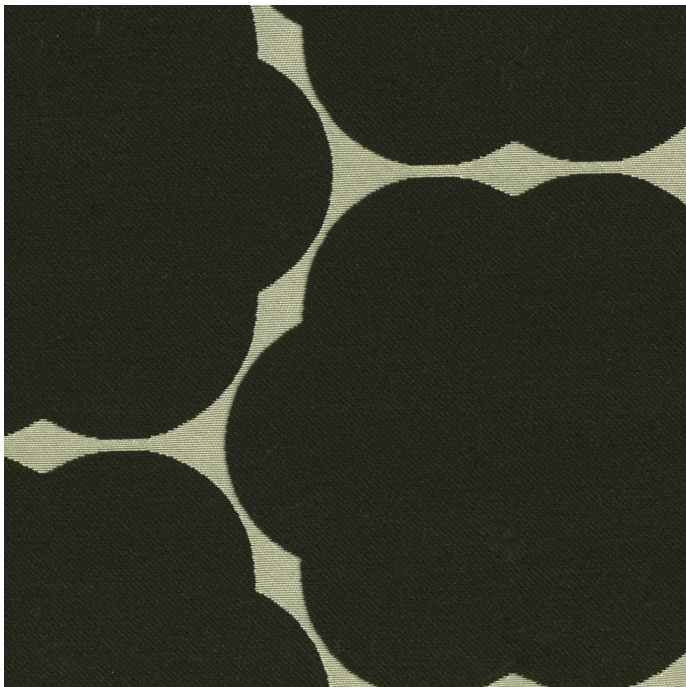


Designtex

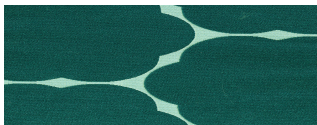
MOD

Black Iris 3713/803  
3713/803

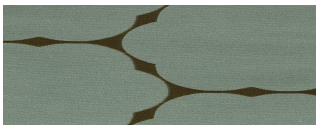
Materials are displayed for reference and may vary by screen and print quality. Please refer to a physical sample for actual color and detail



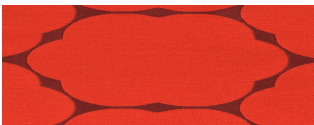
Repeat



Bluebell 3713/402



Hydrangea 3713/401



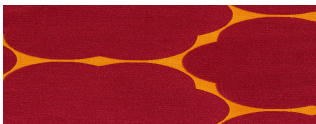
Poppy 3713/301



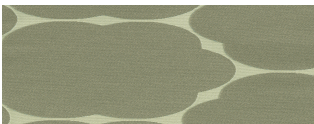
Daffodil 3713/202



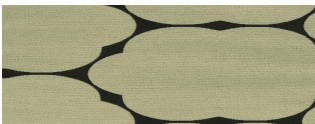
Daisy 3713/201



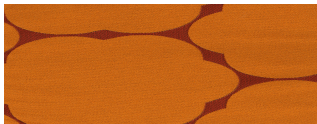
Tulip 3713/901



Cotton 3713/802



Calla 3713/801



Geranium 3713/701



Cactus 3713/502



Jade 3713/501



Morning Glory 3713/403

OVERVIEW

Material Type	Woven
Price	Price Group 6
Offering	Select Surfaces
Brand	Coalesse
Content	26% Post-Consumer Recycled Polyester, 74% Solution Dyed Nylon
Application	Seating Upholstery
Global Availability	Asia Pacific, Americas
Design	Pattern

SPECS

Abrasion Wyzenbeek	100000 Double Rubs
Dry Crocking	Class 5
Wet Crocking	Class 4.5
Colorfastness to Light	Class 4
Brush Pill	Class 5

CHARACTERISTICS

Fabric Backing	Acrylic
Topical Finish	Nanotechnology Stain Resistant
Horizontal Repeat	9.25
Vertical Repeat	10.75
Weight	587.6 grams per linear meter
Width	54 Inches
Country of Origin	United States
Warranty	Warrantied By Supplier

**FULL AVAILABILITY**

---

462 LEAP SEWN 3DKNIT ASIA PACIFIC  
(H)

462 LEAP SEWN ASIA PACIFIC (H)

465 THINK 3DKNIT BACK SEWN SEAT  
ASIA PACIFIC (H)

465 THINK SEWN(OLD) 3DKNIT ASIA  
PACIFIC (H)

465 THINK SEWN(OLD) ASIA PACIFIC  
(H)

465 THINK STANDARD(OLD) 3DKNIT  
ASIA PACIFIC (H)

465 THINK STANDARD(OLD) ASIA  
PACIFIC (H)

465 THINK UPH BACK SEWN SEAT  
ASIA PACIFIC (H)

465 THINK VISITOR 3DKNIT ASIA  
PACIFIC (H)

465 THINK VISITOR ASIA PACIFIC (H)

465 THINK VISITOR SEWN 3DKNIT  
ASIA PACIFIC (H)

465 THINK VISITOR SEWN ASIA  
PACIFIC (H)

466 REPLY GUEST STNDARD ASIA  
PACIFIC (H)

B FREE CUBE ASIA PACIFIC (H,V)

TURNSTONE CAMPFIRE ASIA PACIFIC  
(H)