

Steelcase

# AIR MESH

Black AR02

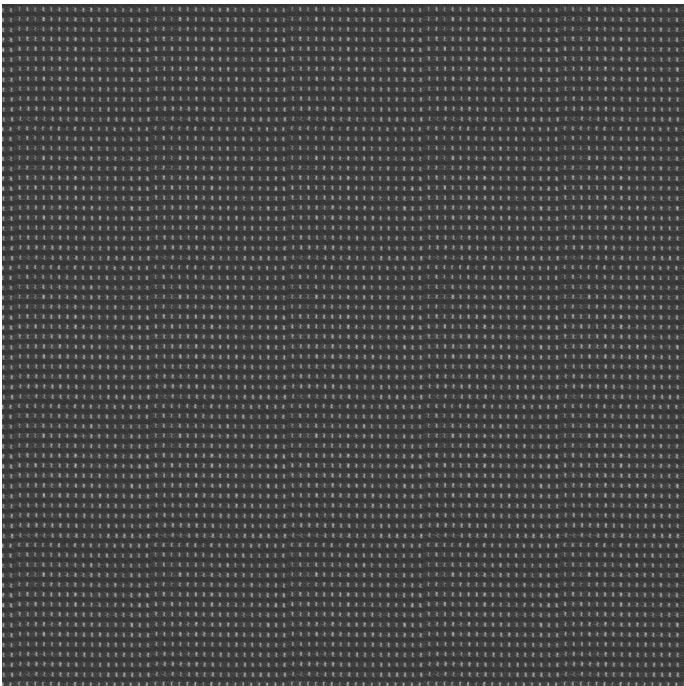
AMER AR02

EMEA AR02

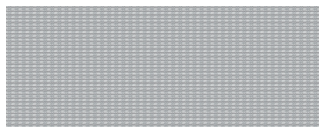
Materials are displayed for reference and may vary by screen and print quality. Please refer to a physical sample for actual color and detail



Image Shown: Warp Horizontal



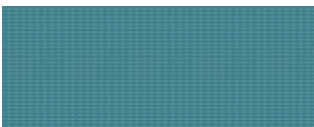
Repeat



Grey AR01



Saffron AR19



Lagoon AR18



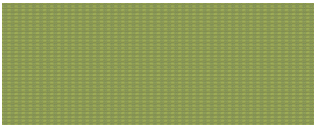
Honey AR17



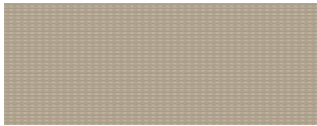
Red AR04



Royal Blue AR05



Apple Green AR06



Sable AR09



Aubergine AR13



Peacock AR14



Jungle AR15



Merlot AR16

OVERVIEW

Material Type	Woven
Price	Mesh
Offering	Standard Surfaces
Brand	Steelcase
Content	64% Polyester, 36% Nylon (Polyamide)
Application	Seating Upholstery
Global Availability	Americas, Europe, Middle East, Africa, Asia Pacific
Cleaning Code	WS
Design	Solid, Pattern, Texture

SPECS

Abrasion Wyzenbeek	100,000 Double Rubs
Dry Crocking	Class 4
Wet Crocking	Class 4
Colorfastness to Light	Class 4

CHARACTERISTICS

Fabric Backing	None
Topical Finish	None
Weight	494.8 grams per linear meter
Width	58 inches
Country of Origin	Italy
Warranty	3 Year

**FULL AVAILABILITY**

---

466 REPLY GUEST SEWN ASIA PACIFIC  
(H)

466 REPLY GUEST STNDARD ASIA  
PACIFIC (H)

466 REPLY TASK SEWN ASIA PACIFIC  
(H)

466 REPLY TASK STANDARD ASIA  
PACIFIC (H)

PERSONALITY 3DKNIT ASIA PACIFIC  
(H)

PERSONALITY ASIA PACIFIC (H)