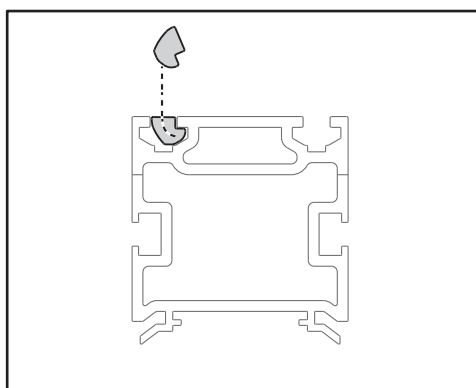
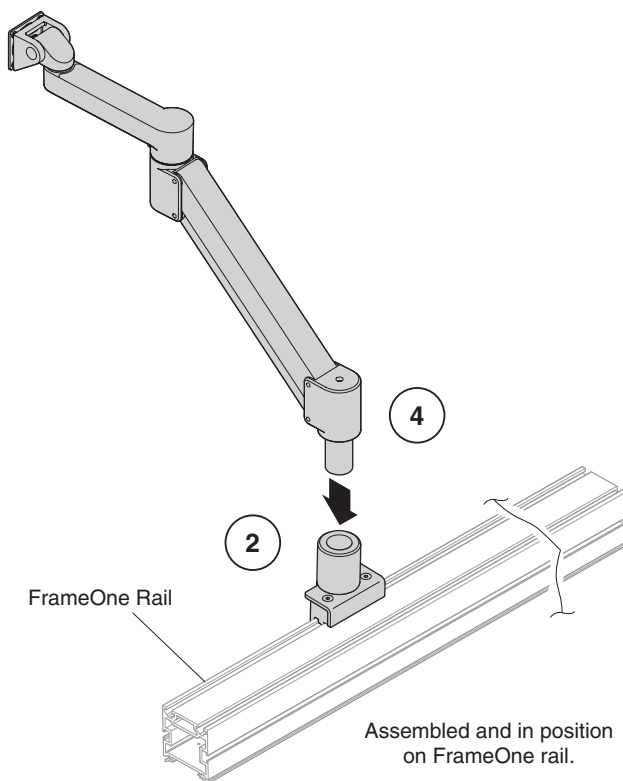
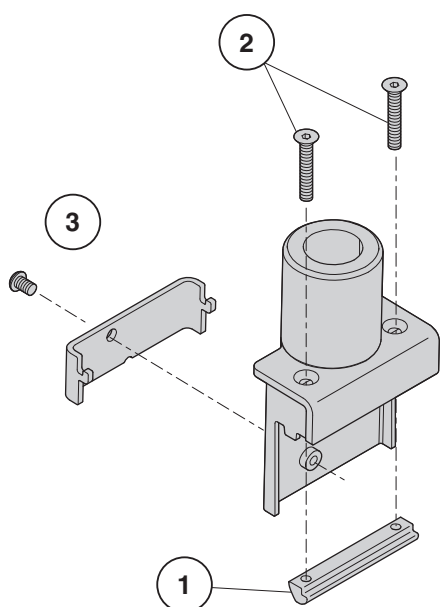


# CF Series Arm on FrameOne™

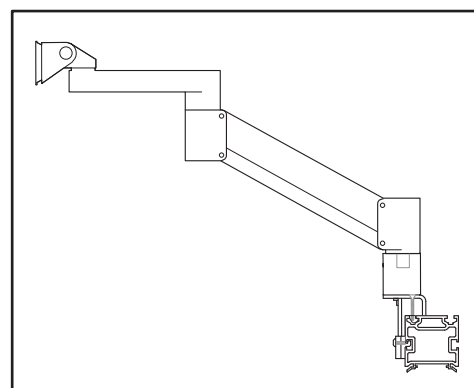
Installation Instructions 22003801 Rev C

## CFSPFO

- 1 Rotate the rail cleat into the FrameOne rail, oriented forward, as shown.
- 2 Place the bracket assembly onto desk rail, over the cleat. Guide two (2) flat head screws through the bracket and turn screws until partially threaded into the cleat.
- 3 Install locking plate onto the face of bracket assembly with 'teeth' facing upward. Install and fully tighten the screw. The two (2) flat head screws may now be fully tightened.
- 4 Install CF series arm, as shown.



SIDE VIEW - CLEAT TO RAIL



SIDE VIEW - ASSEMBLED

For further information, please go to the Details website [details-worktools.com](http://details-worktools.com) or call 800.833.0411

P.O. Box 1967 / CD-5E Grand Rapids, MI 49501-1967

©2012 Steelcase Inc. All rights reserved. 5/12