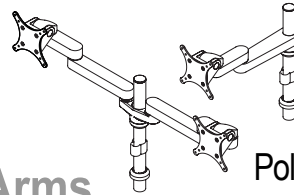


Pole Mount, Flat Panel Monitor Arms Installation Instructions

002871D Rev D

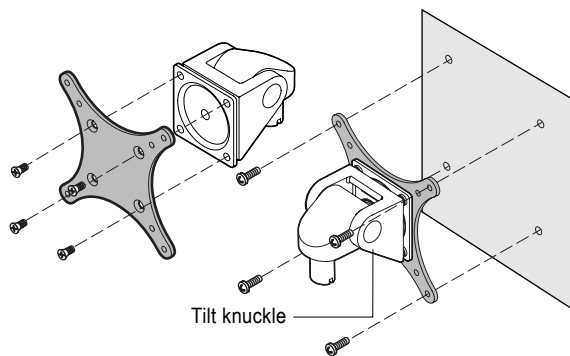
Page 1 of 1



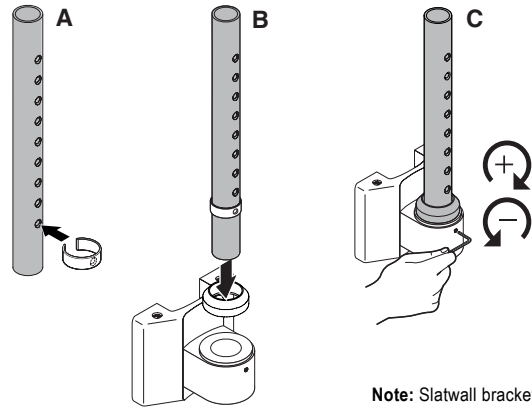
Pole Mount, Flat Panel Monitor Arms

CFSHA
CFDHA

- 1 Attach the 75/100mm VESA mounting plate to tilt knuckle and LCD monitor using the screws provided in the hardware pack.

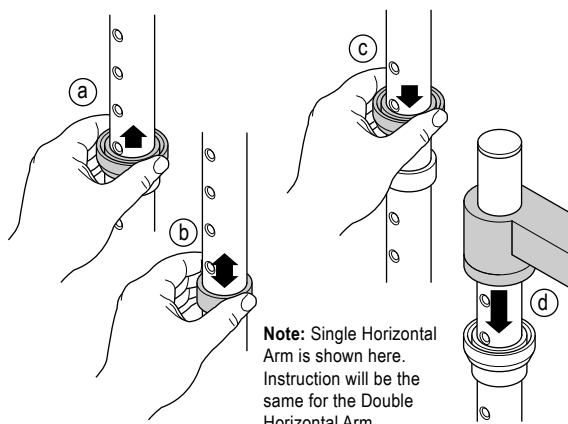


- 2 Install the pole into the bracket.

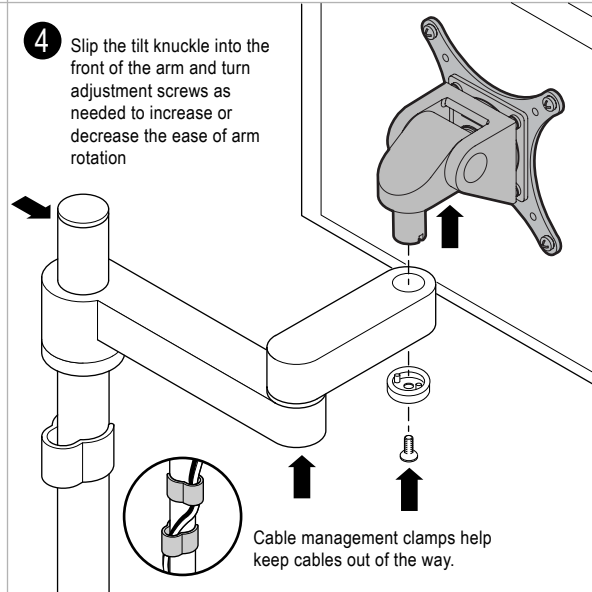


Note: Slatwall bracket is shown here. Pole mount will work the same with any of the Flat Panel Brackets.

- 3 Slide outer retention ring up (a) and then place the inner retention ring dimple into the appropriate height hole location (b). Slide outer retention ring back over inner retention ring (c) and slide arm into position (d).



- 4 Slip the tilt knuckle into the front of the arm and turn adjustment screws as needed to increase or decrease the ease of arm rotation



For a better day at work.™

details®

A STEELCASE COMPANY

P.O. Box 1967 / CD-5E / Grand Rapids, MI 49501-1967 / www.details-worktools.com

©2012 Office Details Inc. All rights reserved. Printed in U.S.A. 12/12