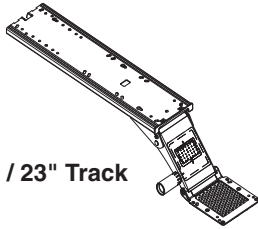


22616801 Rev A

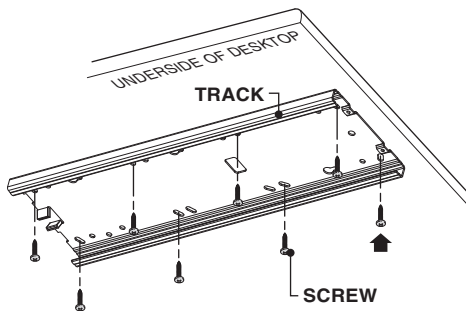
Dial Indicator Mechanism

D623

6" Arm / 23" Track

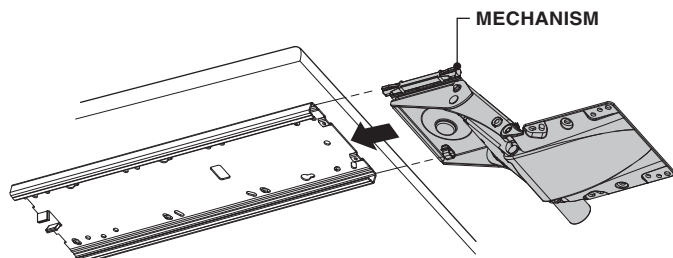


- 1** Please make use of all appropriate hardware provided. Mounting screws are 5/8" in length for attaching track to a worksurface with a 3/4" thickness or greater.



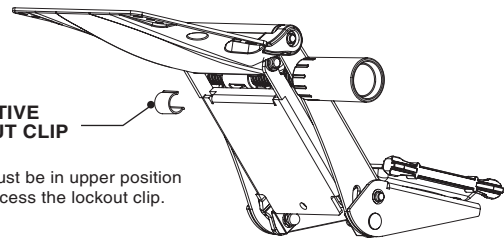
NOTE: Orient track so holes align with channels on Series 9000 top.

- 2** Slide mechanism into track.

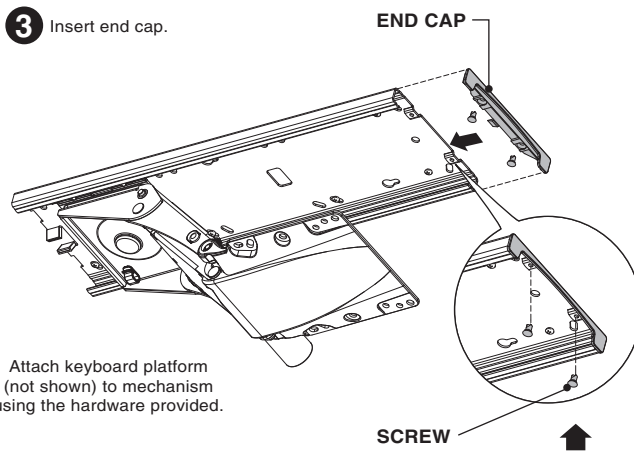


POSITIVE LOCKOUT CLIP

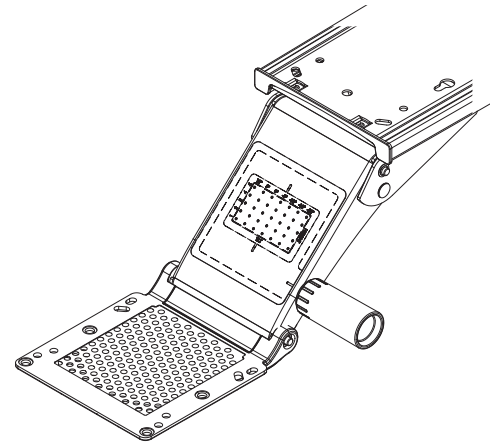
Arm must be in upper position to access the lockout clip.



- 3** Insert end cap.



Attach keyboard platform (not shown) to mechanism using the hardware provided.



Secure front cap with the two (2) machine screws provided

For further information, please go to the Details website details-worktools.com or call 800.833.0411

P.O. Box 1967 / CD-5E Grand Rapids, MI 49501-1967

©2012 Steelcase Inc. All rights reserved. 06/12