



# Coalesse Surface Materials Reference Guide April 2015

*Note: Actual colors will vary due to printing process.*

## Availability

Electronic price list updated with release 182.A (U.S.) and 147.A (Canada), dated April 20, 2015.

Transitional products in this specification guide are **maintained for existing customers only** and are likely to be phased out over time. These products are indicated with a . Products that are scheduled to be culled are indicated with an , followed by the last order entry date.

► For a list of all trademarks, refer to the last page of this specification guide.  
© 2015 Steelcase Inc.



## For Canadian Pricing

Canadian factor can be found at [steelcase.com/CADpricing](http://steelcase.com/CADpricing).

Calculate in the following order to avoid rounding errors:

- Multiply the base price and each option by the Canadian factor.
- Round each to the nearest dollar.
- Add base and options for total list price.

<b>Surface Materials-Upholstery</b>	2
Customer's Own Material	3
Flammability Information	5
Upholstery Palette	6
<b>Surface Materials-Leather/Faux</b>	10
Cut Yardage Net Price List	13
Leather and Faux Leather Matrix	14
Leather Palette	16
Faux Leather Palette	19
<b>Surface Materials-Wood</b>	22
Hardwood Matrix	24
Hardwood Stains Palette	26
Veneer Matrix	28
Veneer Palette	29
<b>Surface Materials-Laminate</b>	32
High-Pressure Laminate Matrix	33
High-Pressure Laminate Palette	34
Laminate Edge Band Matrix	36
<b>Surface Materials-Glass</b>	38
Glass Matrix	39
Glass Palette	40
<b>Surface Materials-Metal/Paint</b>	41
Metal/Paints Matrix	42
Metal/Paints Palette	43
Emu Advanced Collection Paint Matrix	45
Emu Paint Palette	46
<b>Surface Materials-Miscellaneous</b>	47
Edges Palette	48
Plastic and Miscellaneous Palette	49
Denizen, Exponents, and SW_1 Exclusives	52
<b>Care and Maintenance</b>	54

# Surface Materials- Upholstery

## Upholstery

All Coalesse textiles are priced by grades. Some Coalesse fabrics can be treated for flame retardancy, contact Customer Service. All Coalesse products are handcrafted making each unique. Certain fabrics and leathers will appear loose and may differ from like products due to comfort wrinkles when upholstered.

A contrasting welt is available on some products. Consult Customer Service for yardage or square feet requirements and prices. All stripes will be applied vertically unless customer specifies otherwise. Loose cushions on Coalesse products are not fully upholstered (not reversible).

DesignTex, Maharam, Steelcase, and select Luna fabrics are graded in our pricing. Simply order Coalesse products with DesignTex, Maharam, Steelcase, and select Luna fabrics are graded in on Coalesse products; however, Coalesse does not stock fabrics and can only respond based on DesignTex, Maharam, Steelcase, and select Luna fabrics lead times. For current grades, refer to Coalesse website: [www.Coalesse.com](http://www.Coalesse.com).

## Special Fabric Applications\*

### Backing\*

- Backing information is found on each product page in the Coalesse Specification Guides. Select this option when ordering your product to have backing applied. Price varies by product according to yardage it requires.

\*Prices subject to change without notice and an additional 2 week lead time will apply for 54" wide fabrics. Wider fabrics will require 4 week additional lead time.

\*Check fabric database to determine if backing is required at [www.Coalesse.com](http://www.Coalesse.com).

## Seating Upholstery

Coalesse fabrics are priced by grades from 6 through 14 and leathers C and E. Fabrics and leathers may be purchased separately as cut yardage, see page 13. All products are handcrafted, making each unique.

Certain fabrics and leathers will appear loose and may differ from like products due to wrinkles when upholstered. A contrasting welt is available on some products. Consult Customer Service for yardage or square feet requirements for pricing.

All stripes will be applied vertically unless customer specifies otherwise. Loose cushions on Coalesse products are not fully upholstered (not reversible). Any graded-in or COM textile should be reviewed with supplier to verify availability. In some cases a textile supplier may require minimums that exceed your furniture order requirements. In these situations, you will be contacted with an option to select a different textile or continue with your original textile selection as a COM-DTP. If you choose to continue with your textile selection as COM-DTP to allow you to order the minimum required, please ship only the textile needed to Coalesse for your furniture order.

## Emu Upholstery

### Applies to: Emu Advanced Collection Outdura Collection

#### Fabric Grade 6

5G30 Natural White  
5G31 Kona  
5G32 Sandstone  
5G33 Cadet Grey  
5G34 Stone  
5G35 China Red  
5G36 Cardinal Red  
5G37 Solid Aquamarine  
5G38 Canary  
5G39 Pesto  
5G40 Ice Blue  
5G41 Island Blue

DesignTex Radiate Grade 9 is also available. See [coalesse.com](http://coalesse.com) surface materials database.

## SW\_1 3D Knit

### Applies to: SW\_1 Collection

5K20 Stone  
5K21 Grey  
5K23 Brown  
5K24 Black  
5K25 Garnet  
5K26 Golden  
5K27 Royal  
5K28 Ivory  
5K29 Coal

# Customer's Own Material

## CUSTOMER'S OWN MATERIAL

Coalesse is pleased to cooperate with COM/COL selections. Prior to order placement for exact yardage requirements, a sample cutting of actual COM/COL must be submitted to Coalesse for approval only if fabric approval is not found in Coalesse fabric database. Identify the name and number of units on which the fabric/leather is to be applied. If COM has a repeat the sample should be large enough to show the entire repeat. Coalesse will not accept nor use any painted leathers. A painted leather is described as any suede or leather which is not aniline dyed with the same color throughout the thickness of the hide.

Even after preliminary approval, Coalesse reserves the right to reject COM/COL if necessary when the quality is not satisfactory for the item it is intended to be used on. Once COM/COL is accepted Coalesse assumes no responsibility for its overall appearance, flammability, normal durability, colorfastness, or any other quality, after upholstered on a Coalesse product.

## COALESSE STANDARD TO BUY PROGRAM

The Customer's Own Material (COM) Program offers the opportunity for customers to select fabrics that are not offered through the standard Coalesse surface materials program for use on our products. Through the COM program, Coalesse will test your materials for application on Coalesse products. Once approved, you can place your order. Coalesse will facilitate the entire ordering process and give you a production schedule. Coalesse will order the COM fabric directly from the textile manufacturer. For up-to-date information regarding fabric test results for all COM fabrics and details regarding yardage requirements for most Seating lines, visit the fabric database at [www.coalesse.com](http://www.coalesse.com).

## CUSTOMERS TO BUY SCHEDULING POLICY/COM/COL POLICY

COM/COL must be received at manufacturing location no later than 20 working days prior to the order scheduled delivery date. If COM/COL is not received in this time frame, scheduling will move the order's delivery date out to the best available ship date. Customer Service will notify the dealer via e-mail of the order's new scheduled delivery date. Project size order shipment may be affected due to size of order. If the COM/COL is received and the COM/COL requires backing, scheduling will move order out to best available ship date. Backing charges will apply. If COM/COL is received defective or short yardage/sq. ft., the replacement COM/COL order must be received within 3 days to maintain scheduled delivery date on order. It is the responsibility of the dealer to advise Coalesse on what to do with defective materials. In addition, customers may request Coalesse to order for COM/COL materials.

## SQUARE FOOTAGE/YARDAGE REQUIREMENTS

COM and COL price includes application of Customer's Own Material or Leather to frames. All COM and COL should be shipped freight prepaid to designated manufacturing location. Labels will be provided by your Customer Service representative to ensure clear textile identification.

Please have customers send COM/COL and add TAG: COM/COL.

COM and COL must be identified as follows to prevent order delays:

1. Name and address (Should match purchase order)
2. Your furniture purchase order number/sales order
3. Style number to which fabric is to be applied
4. Supplier name and fabric name, number, and color

COL hides must be rolled for shipment to manufacturing location in a neat manner, avoiding creases and excessive roll marks. All leathers will be rejected if sent in a folded manner.

To determine COL square footage, see COL requirements for each product. Square footage requirements are based on an average hide size of 45-50 square feet of clean, usable leather. If the COL has a smaller average hide size, please consult Customer Service for quotation. Please note, leather is a natural product and all square footage requirements are estimations. The shape of the COL hides supplied and the usable, clean square footage may make it necessary for us to request more leather after COL is received.

Yardage requirements shown are based on 54" width plain material. If fabric design requires vertical/top out, Customer Service should be consulted for additional yards required. If fabric is under 54", refer to fabric database at [www.coalesse.com](http://www.coalesse.com).

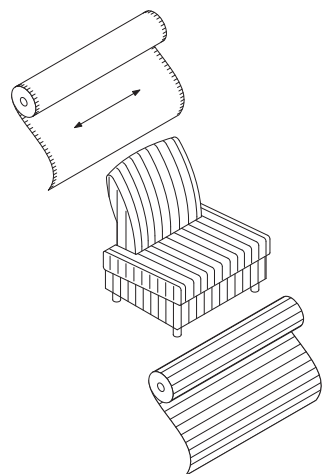
## EXCESS COM/COL POLICY

All excess COM/COL will be disposed of after order is completed unless prior arrangements have been made with Coalesse Customer Service. Fedex account number and address to ship to must be referenced. Excess WILL NOT be returned with shipment of furniture.

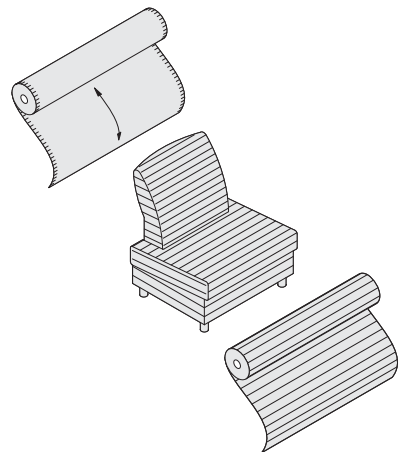
## Customer's Own Material *continued*

### Cutting Direction Guidelines

Cutting direction is based on the fabric width and the way the fabric is cut from the roll and applied to Coalesse products. There are two cutting directions: railroaded or horizontal.



Horizontal or railroaded (across roll, warp horizontal) means fabric is cut across the roll; selvages are on the top and bottom.



**Vertical or top out** (down roll, warp vertical) means fabric is cut in the same direction it is woven; selvages are on the left and right sides.

# Flammability Information

## California Technical Bulletin 133

**Definition:** California Technical Bulletin 133 (CAL 133) is a flammability test procedure for seating furniture specified in public occupancies. Specifications, test procedures and requirements pertaining to flammability regulations are changing rapidly. Coalesse will make every effort to keep our information and services pertaining to flammability specifications up-to-date.

**Coalesse reserves the right to make deletions and additions and cannot guarantee fabric manufacturer materials nor its specifications will not change. A new evaluation will be necessary if materials are altered by manufacturer. This approval information on our website is subject to change without notice. Coalesse is not responsible for textile manufacturer's changes. Contact fabric manufacturer for availability.**

For fabrics not pre-approved, please submit the fabric supplier name, fabric name, style number, content, weight, Coalesse product number, and fabric name to be applied to customer service at 1.800.627.6770 or fax to 888.413.5161. Our customer service representative will contact you within 48 hours of your request with information on the fabric's CAL 133 compliance. Actual fabric sample may be required. **If not approved, a burn test may be required at a fee. Contact Customer Service for a quote.**

**UFAC** – All upholstered seating is constructed to conform to UFAC (Upholstered Furniture Action Council) specifications. This is comparable to NFPA 260. All Coalesse fabrics and leathers meet UFAC specifications and NFPA 260 requirements.

## California Bureau of Home Furnishings Technical Bulletin 117

– All Coalesse upholstered seating, fabrics, and leathers meet California Technical Bulletin 117. All products manufactured after May 1, 1993 have CAL 117 label attached.

## California Bureau of Home Furnishings Technical Bulletin 133

– On March 1, 1992 Technical Bulletin 133 (TB 133), a fire test for seating furniture in public buildings, became law in California. On and after March 1, 1992 all seating furniture sold in California for use in the public buildings specified in the regulations, must be in compliance with the requirements of TB 133, and each product must be labeled stating that the furniture meets TB 133. If a building is fully sprinklered, compliance with TB 133 becomes discretionary, however, even in sprinklered buildings all furniture must meet the minimum fire standards of the bureau's Technical Bulletin 117.

California Technical Bulletin 133 requires special construction procedures and is based on fabric and product design. For applicable CAL 133 upcharge, refer to up-charge, refer to individual product pages in the specification guide or the fabric database at [www.coalesse.com](http://www.coalesse.com).

**Pre-Approved Fabrics** – [www.coalesse.com](http://www.coalesse.com) If a model or fabric is not listed, consult Customer Service for details at 800.627.6770.

**\*Note** – California Technical Bulletin 133 is a unit test and requires specific product testing of unit for certification. If certification is required the test of a unit constructed exactly as the unit(s) to be specified in the installation, the cost of the test unit plus the cost of testing (\$500 U.S. net per test) must be added to obtain certification. Coalesse is not responsible for any charges for COM/COL purchased prior to evaluation if unit fails. Textile and unit cannot be returned.

Please consult Customer Service at 1.800.627.6770 or Fax 888.413.5161 for suggested fabrics/leathers, upcharges and minimums required for meeting California Technical Bulletin 133.

**General Information** – Specifications, test procedures and requirements pertaining to flammability regulations are changing rapidly. Coalesse will make every effort to keep our information and services pertaining to flame specifications up-to-date. However, we do reserve the right to alter the products, fabrics/leathers or upcharges associated with any of the above or any other flame specifications.

When COM or COL is specified for use on Coalesse seating that is to meet the New York Port Authority Code, the COM or COL must be treated to meet this code prior to receipt by Coalesse. Coalesse is not responsible for the flammability treatment or certification of any COM or COL. All upcharges indicated are to be added to list prices.

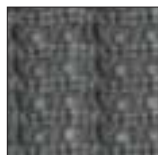
► See specific product pages in the Coalesse Specification Guides for CAL 133 approval, option, and pricing.

## SW\_1 – Grade 1

*Note: Coalesse reserves the right to reject fabrics when necessary if the quality or construction is not satisfactory for intended use. For most up to date information on fabric usage please check the fabric database on [www.coalesse.com](http://www.coalesse.com).*



Stone  
5K20



Grey  
5K21



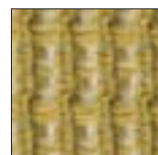
Brown  
5K23



Black  
5K24



Garnet  
5K25



Golden  
5K26



Royal  
5K27



Ivory  
5K28



Coal  
5K29

## Lagunitas – Grade 1



Stone  
5K50



Grey  
5K51



Black  
5K54



Ivory  
5K58



Coal  
5K59

## Lagunitas – Grade 2



Cement  
5K52



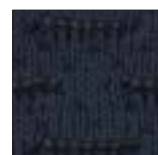
Brown  
5K53



Garnet  
5K55



Golden  
5K56



Royal  
5K57



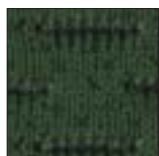
Glacier  
5K60



Cadet  
5K61



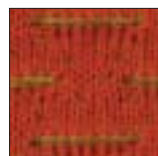
Grass  
5K62



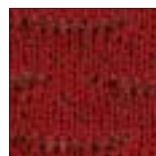
Forest  
5K63



Amber  
5K64



Terracotta  
5K65



Crimson  
5K66



Berry  
5K67



Violet  
5K68



Khaki  
5K69

# Upholstery Palette

For outdoor use on Emu products only

## Emu Outdura - Grade 6

*Note: Coalesse reserves the right to reject fabrics when necessary if the quality or construction is not satisfactory for intended use. For most up to date information on fabric usage please check the fabric database on [www.coalesse.com](http://www.coalesse.com).*

*Designtex Radiate also available - Grade 9. See [coalesse.com](http://coalesse.com) surface materials database.*



Natural White  
5G30



Kona  
5G31



Cadet Grey  
5G33



Stone  
5G34



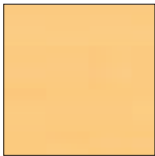
China Red  
5G35



Cardinal Red  
5G36



Solid Aquamarine  
5G37



Canary  
5G38



Pesto  
5G39



Ice Blue  
5G40



Island Blue  
5G41

# Upholstery Palette continued

---

## Hexa - Grade 10

For use on Hosu products only

*Note: Coalesse reserves the right to reject fabrics when necessary if the quality or construction is not satisfactory for intended use. For most up to date information on fabric usage please check the fabric database on [www.coalesse.com](http://www.coalesse.com).*



Dark Grey  
CL50



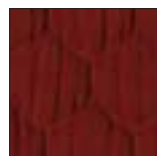
Light Grey  
CL51



Blue  
CL52



Green  
CL53



Red  
CL54



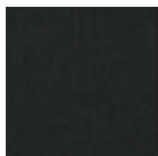
Yellow  
CL55

---

## Fusion - Grade 11

For use on Hosu and Massaud products only

*Note: Coalesse reserves the right to reject fabrics when necessary if the quality or construction is not satisfactory for intended use. For most up to date information on fabric usage please check the fabric database on [www.coalesse.com](http://www.coalesse.com).*



Caviar  
CL60



Portobello  
CL61



Graphite  
CL62



Java  
CL63



Steam\*  
CL64

\*Steam is not available on Hosu.



# Upholstery Palette - Stitching

*Note: Coalesse reserves the right to reject fabrics when necessary if the quality or construction is not satisfactory for intended use. For most up to date information on fabric usage please check the fabric database on [www.coalesse.com](http://www.coalesse.com).*

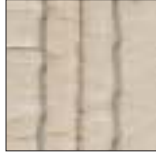
## Stitching (Holy day lounge and Holy day tables)



White  
L941 (Matches RS-4200)



Ebony  
L900 (Matches RS-4999)



Mica  
L904 (Matches RS-4261)



Espresso  
L923 (Matches RS-4129)



Saffron  
L939 (Matches RS-4251)



Garnet  
L930 (Matches RS-4265)



Scarlet  
L919 (Matches RS-4262)



Rosetta  
L919 (Matches RS-4262)



Sky Blue  
L910 (Matches RS-4269)

\*ALL PRODUCTS OTHER THAN HOLY DAY TRADITIONAL THREAD COLOR CLOSEST MATCHED TO SURFACE MATERIAL

# Surface Materials - Leather/Faux

## Leather

### ELMOsoft, ELMORUSTICAL LEATHER CARE

Only the finest hides are used for Elmo leather. Expect some color variations from hide to hide due to the aniline state of the product. Color fading may occur if leather is exposed to direct or intense light. Care is required to allow this product to achieve the rich natural patina that beautiful natural leather develops. The hallmarks of this leather include some naturally occurring markings, such as healed scars, insect bites, stretch marks, and fat wrinkles. Elmorustical's leather treatment is very natural with little protection from spills or body oils. This rich leather will exhibit stains and oils through normal use. Coalesse is not responsible for discoloration, spotting, or staining on this leather.

### Special Color Match Leather

Coalesse can provide a special color match in its leather to any supplier's leather color, paint color, carpet color, wall-paper color, etc. Sample to match must be submitted to Coalesse with purchase order. Sample for approval can be supplied if requested.

*Note: Minimum order 2,500 sq. ft.*

### Special Fabric Applications\*

#### Backing\*

• Backing information is found on each product page in the Coalesse Specification Guides. Select this option when ordering your product to have backing applied. Price varies by product according to yardage it requires.

\*Prices subject to change without notice and an additional 2 week lead time will apply for 54" wide fabrics. Wider fabrics will require 4 weeks additional lead time.

## Elmo Leather

Coalesse uses leathers that are provided by Elmo of Sweden. Elmosoft is a full grain, aniline dyed, semi-aniline finish. Elmosoft is also offered on some products in pique. With Elmosoft leather, now recyclable and chromium-free, you have the opportunity to bid on green projects when requested. Elmosoft leathers are never corrected, buffed, or altered in any way. Coalesse purchases only original full grain leathers. The quality of this genuine leather can be felt in the hand immediately. Other leathers are often stiff because of the amount of pigment needed to cover the imperfections of an inferior hide. Using leather of a low quality affects the overall quality of the furniture it is upholstered on. You can feel confident in leather purchased from Coalesse.

## Elmosoft

### Grade C

#### Elmosoft

L110	Maritime Blue
L111	Midnight Blue
L112	Ebony
L113	Gunmetal
L114	Mica
L115	Dove Grey
L116	Plum Pleasure
L122	Truffle
L128	Red Birch
L132	Violet
L133	Espresso
L134	Ruby
L135	Scarlet
L136	Claret
L137	Cabernet
L138	Bourbon
L139	Cinder
L140	Garnet
L143	Pecan
L144	Chamois
L145	Palomino
L146	Russet
L147	Saddle
L148	Goldstone
L150	Ivory
L151	White
L709	Sugar
L710	Lava
L711	Parchment
L712	Buff
L713	Sand
L714	Maize
L715	Camel
L716	Khaki
L717	Cameo
L718	Mushroom
L719	Taupe
L720	Fawn
L721	Rock
L722	Desert
L723	Storm
L724	Mist
L725	Teal
L726	Celadon
L727	Egyptian Blue
L728	Bright Blue
L729	Aquarium
L730	Hunter
L731	Fern
L732	Edamame
L733	Moss
L734	Key Lime
L735	Creamsicle
L736	Lemon
L737	Sunshine
L738	Drama
L739	Byzantium
L740	Dazzle
L741	Fuchsia
L742	Flamingo

## Elmosoft Pique

L550	Ebony
L551	Maritime Blue
L552	Midnight Blue
L553	Gunmetal
L554	Mica
L555	Dove Grey
L556	Plum
L562	Truffle
L568	Red Birch
L572	Violet
L573	Espresso
L574	Ruby
L575	Scarlet
L576	Claret
L577	Cabernet
L578	Bourbon
L579	Cinder
L580	Garnet
L583	Pecan
L584	Chamois
L585	Palomino
L586	Russet
L587	Saddle
L588	Goldstone
L590	Ivory
L591	White

## Elmotique

L310	Sage Brush
L311	Flaxen
L312	Earth
L313	Clay
L314	Blue Mountain
L315	Juniper

## Elmorustical Leather

Elmorustical is a full top grain, aniline dyed leather. Elmorustical is also offered in pique on some products.

Elmorustical has a grain which varies in structure and offers outstanding comfort. It is an aniline leather with all the distinct features of the natural hide.

Only the finest hides are used for Elmorustical leather. Expect some color variations from hide to hide due to the aniline state of the product. Color fading may occur if leather is exposed to direct or intense light. Care is required to allow this product to achieve the rich natural patina that beautiful leather develops. The hallmarks of this leather include some naturally occurring markings such as healed scars, insect bites, stretch marks, and fat wrinkles. Elmorustical's leather treatment is very natural with little protection from spills or body oils. This rich leather will exhibit stains and oils through normal use. Coalesse is not responsible for discoloration, spotting, or staining on this leather.

### Grade E

#### Elmorustical

L318	Loam
L319	Ebony
L321	Beige
L323	Buff
L325	Camel
L326	Charbrown
L330	Flame
L332	Honey
L334	Mist Green
L337	Russet
L338	Rust
L363	Tendrill
L364	Fog
L365	Sunflower
L366	Terra Cotta
L367	Cadet
L368	Marine
L369	Mallard
L370	Smoke
L371	Merlot
LD54	Twilight

## Surface Materials - Leather/Faux

**Elmorustical Pique**

L340	Beige
L341	Camel
L342	Charbrown
L344	Ebony
L346	Flame
L347	Honey
L349	Loam
L350	Mist Green
L352	Rust
L353	Twilight
L355	Buff
L361	Russet
L372	Tendrill
L373	Fog
L374	Sunflower
L375	Terra Cotta
L376	Cadet
L377	Marine
L378	Mallard
L379	Smoke
L380	Merlot

**Saddle Leather**

**Applies to: Saddle Stitch  
Color Options For Leather  
Holy Day Chair and Holy Day  
Leather Table (only)**

L925	Scarlet (matches RS-4211)
L910	Sky Blue (matches RS-4269)
L919	Rosetta (matches RS-4262)
L941	White (matches RS-4200)
L904	Mica (matches RS-4261)
L939	Saffron (matches RS-4251)
L930	Garnet (matches RS-4265)
L923	Espresso (matches RS-4129)
L900	Ebony (matches RS-4999)

**Carl Hansen****Loke Leather**

5072	Loke 7210
5073	Loke 7050
5074	Loke 7270
5075	Loke 7170
5076	Loke 7150
5077	Loke 7160
507C	Loke 7060*
507D	Loke 7100*
507E	Loke 7110*
507F	Loke 7140*
507G	Loke 7240*
507H	Loke 7310*
507J	Loke 7732*
507K	Loke 7744*
507L	Loke 7748*
507M	Loke 7763*
507N	Loke 7766*

**Thor Leather**

5394	Thor 300
5395	Thor 307
5396	Thor 306
5397	Thor 339
5398	Thor 301
5399	Thor 390
539A	Thor 325*
539C	Thor 332*
539E	Thor 359*
539F	Thor 310*
539G	Thor 350*
539H	Thor 377*

**SIF Leather**

507P	SIF 91*
507Q	SIF 95*
507R	SIF 93*
507T	SIF 90*
507U	SIF 98*
507Y	SIF 92*

**Cowhides**

507W	SIF Brown/White*
508D	SIF Black/White*

\*Available Summer 2015

**Faux Leather**

Coalesse offers a variety of faux leathers. Not all faux leathers are available on all products, check seating matrix on 14 to determine availability.

**Grade 11****Destiny**

DY01	Black
DY02	Raisin
DY03	Blueberry
DY04	Chestnut
DY05	Cedar
DY06	Black Rose
DY07	Wine
DY09	Dune
DY10	Truffle
DY11	Oak
DY12	Newport
DY13	Evergreen
DY14	Storm
DY15	Juniper
DY16	Olive
DY17	Mocha
DY18	Ash
DY21	Butter
DY23	Deep Red
DY24	Eggshell
DY26	Parchment
DY27	Periwinkle
DY30	Royal Purple
DY31	Saddle
DY32	Cactus Green
DY33	Cypress
DY34	Mink
DY35	Football
DY36	Root

**Finesse**

AM00	White Cloud
AM01	Gelato
AM02	Winter White
AM04	Mushroom
AM06	Charbrown
AM08	Iceberg
AM09	Gravel
AM10	Colonial Blue
AM24	Rye
AM25	Barley
AM26	Stucco
AM27	Beaver
AM28	Otter
AM65	Burgundy
AM66	Navy
AM67	Cinder
AM80	Cameo
AM81	Oyster Grey
AM83	Taupe
AM85	Chestnut
AM87	Indigo
AM88	Bone
AM89	Jet Black
AM92	Bordeaux
AM93	Hunter Green
AM98	Oxford Brown

**Ovation**

O500	Dark Brown
O501	Light Grey
O502	Sage
O503	Indigo
O504	Lilac
O505	Terra
O506	Moss
O507	Teal
O508	Stone
O509	Cappuccino

**Panache**

P800	Ebony
P801	Cactus
P802	Sherwood
P803	Teal Blue
P804	Sweet Sage
P805	Coffee
P806	True Taupe
P807	Cashew
P808	Acorn
P809	Redwood
P810	Exotic Orchid
P811	Maize
P812	Chartreuse
P813	Regal Blue

**Prestige**

AFA1	Onyx
AFB2	Soft White
AFC3	Saxe Blue
AFD3	Buff
AFDG	Antique White
AFE1	Sandstone
AFH1	Pecan
AFH2	Buttercream
AFI1	Havana
AFI2	Brick
AFK1	Parchment
AFL8	French Grey
AFP1	Willow
AFP2	Boxwood Green
AFPA	Tree Moss
AFPC	Celadon
AFS3	Wild Plum

**Grade 12****Elegance**

EL01	Ivory
EL02	Cream
EL03	Char
EL04	Saddle
EL05	Dune
EL06	Camel
EL07	Sage
EL08	Gray
EL09	Walnut
EL10	Burgundy
EL11	Green
EL12	Navy
EL13	Black

**Grade 13****Destiny Perforated**

DP01	Black
DP02	Raisin
DP03	Blueberry
DP04	Chestnut
DP05	Cedar
DP06	Black Rose
DP07	Wine
DP09	Dune
DP10	Truffle
DP11	Oak
DP12	Newport
DP13	Evergreen
DP14	Storm
DP15	Juniper
DP16	Olive
DP17	Mocha
DP21	Butter
DP23	Deep Red
DP24	Eggshell
DP26	Parchment
DP27	Periwinkle
DP30	Royal Purple
DP31	Saddle
DP32	Cactus Green
DP33	Cypress
DP34	Mink
DP35	Football
DP36	Root

**Finesse Perforated**

AP00	White Cloud
AP01	Gelato
AP02	Winter White
AP04	Mushroom
AP06	Charbrown
AP08	Iceberg
AP09	Gravel
AP10	Colonial Blue
AP24	Rye
AP25	Barley
AP26	Stucco
AP27	Beaver
AP28	Otter
AP65	Burgundy
AP66	Navy
AP67	Cinder
AP80	Cameo
AP81	Oyster Grey
AP83	Taupe
AP85	Chestnut
AP87	Indigo
AP88	Bone
AP89	Jet Black
AP92	Bordeaux
AP93	Hunter Green
AP98	Oxford Brown

Surface Materials - Leather/Faux *continued***Panache Perforated**

PR00 Ebony  
PR01 Cactus  
PR02 Sherwood  
PR03 Teal Blue  
PR04 Sweet Sage  
PR05 Coffee  
PR06 True Taupe  
PR07 Cashew  
PR08 Acorn  
PR09 Redwood  
PR10 Exotic Orchid  
PR11 Maize  
PR12 Chartreuse  
PR13 Regal Blue

**Prestige Perforated**

APA1 Onyx  
APB2 Soft White  
APC3 Saxe Blue  
APD3 Buff  
APDG Antique White  
APE1 Sandstone  
APH1 Pecan  
APH2 Buttercream  
API1 Havana  
API2 Brick  
APK1 Parchment  
APL8 French Grey  
APP1 Willow  
APP2 Boxwood Green  
APPA Tree Moss  
APPC Celadon  
APS3 Wild Plum

# Cut Yardage Net Price List

FABRIC NAME	Under 60 Yards	60 Yards & Over	
<b>Elegance®</b>	\$84.00/yd.	\$80.00/yd.	
<b>Finesse®</b>	\$51.00/yd.	\$50.00/yd.	
<b>Finesse® Perforated</b> (min. 5 yds)	\$61.00/yd.	\$60.00/yd.	
<b>Prestige®</b>	\$56.00/yd.	\$53.00/yd.	
<b>Prestige® Perforated</b> (min. 5 yds)	\$66.00/yd.	\$63.00/yd.	
<b>Destiny®</b>	\$57.00/yd.	\$55.00/yd.	
<b>Destiny® Perforated</b> (min. 5 yds)	\$67.00/yd.	\$64.00/yd.	
<b>Ovation</b>	\$57.00/yd.	\$53.00/yd.	
<b>Panache</b>	\$57.00/yd.	\$55.00/yd.	
LEATHER NAME	Under 500 sq. ft.	500-1000 sq. ft.	Over 1000 sq. ft.
<b>Elmosoft</b>	\$9.00/sq. ft.	\$8.00/sq. ft.	\$7.50/sq. ft.
<b>Elmosoft Pique</b> (min. 50 sq. ft.)	\$11.00/sq. ft.	\$9.00/sq. ft.	\$8.50/sq. ft.
<b>Elmorustical*</b>	\$11.00/sq. ft.	\$9.00/sq. ft.	\$8.50/sq. ft.
<b>Elmorustical Pique*</b> (min. 50 sq. ft.)	\$13.50/sq. ft.	\$11.50/sq. ft.	\$11.00/sq. ft.

\*See page 54 for Elmorustical Leather care.

## ORDERING INFORMATION

- F.O.B. High Point, North Carolina
- Minimum Order Requirements
  - Fabric: 1 yd. - ½ yd. increments.
  - Leather: 1 full hide (avg. sq. ft./hide - 50).
  - All orders will be filled in full hides only.
  - Overage will be invoiced accordingly.
- Cancelled textile orders are subject to a 30% restocking fee. Order must be cancelled 5 days before ship date.
- Special match leather: 2,500 sq. ft. minimum (Check delivery date)
- The embossing techniques used on Novasuede Perforated and Pique, to achieve these looks involve very high temperatures. Color and shade may vary slightly based on the fiber density being embossed.

Due to the natural processes of dying, sanding and embossing necessary to achieve these special looks, actual production may vary slightly in appearance from the swatches shown.

## COALESSE TEXTILE WARRANTY

Coalesse textile merchandise is produced in accordance with Coalesse high standards. Coalesse does not guarantee, warrant or accept any responsibility whatsoever by reason of its fabrics or leathers fading, wearing, cracking, shrinking, stretching, tearing, seam slippage, alteration in color due to any finish treatment (flameproofing, stain repellent, etc.) or discoloration from liquid contact. Printed textiles are not warranted against irregularity in register. Coalesse is not responsible for dye lot differences or discrepancies in widths of fabrics. Coalesse does not guarantee, warrant or represent an exact color match to cuttings, tabs, memos or sample cards. Coalesse does not warrant exact matching of color or grain of leather. Leather hides may contain certain natural marks, scars, scratches, wrinkles and shade variations within hides, etc., considered by leather tanneries and Coalesse to be inherent characteristics part of the natural beauty of leather and the size or location of such markings cannot be controlled. In any event, upon inspection, Coalesse's responsibility shall be limited to either replacement of merchandise or refund of purchase price at Coalesse's option. The foregoing constitutes the sole and exclusive remedy of the customer. Coalesse is not responsible for the application or installation of our products. In no event shall Coalesse be responsible for any consequential damages or any charges, costs, expenses, or obligations other than as expressly herein set forth. Coalesse makes no other warranties, expressed or implied, as to any product sold by Coalesse. All other warranties (including any warranty of merchantability or fitness for any particular purpose) are hereby excluded.



## For Canadian Pricing

Multiply U.S. Price by the Canadian price factor.

► See page 1 for details.

# Leather and Faux Leather Matrix

*Note: Coalesse reserves the right to reject fabrics when necessary if the quality or construction is not satisfactory for intended use. For most up to date information on fabric usage please check the fabric database on [www.coalesse.com](http://www.coalesse.com).*

## Legend

- = Not available
- = Available
- ◻ = Must be ordered as COM or COL
- ◻ = Available but will have comfort wrinkles
- See specification pages in the Coalesse Specification Guides for details.

	Elmosoft Grade C	Elmosoft Pique Grade C	Elmotique Grade E	Elmorustical Grade E	Elmorustical Pique Grade E	Loke	Destiny Grade 11	Destiny Perforated Grade 13	Prestige Grade 11	Prestige Perforated Grade 13	Finesse Grade 11	Finesse Perforated Grade 13	Elegance Grade 12	Panache Grade 11	Panache Perforated Grade 13	Ovation Grade 11
Archipelago	■	■	•	■	•	•	■	•	■	•	■	•	■	■	•	■
Astor	■	■	■	■	■	◻	■	■	■	■	■	■	■	■	■	■
Await	■	■	■	■	■	◻	■	■	■	■	■	■	■	■	■	■
Bindu	■	■	■	■	■	◻	■	■	■	■	■	■	■	■	■	■
Bix	■	■	•	■	•	•	■	•	■	•	■	•	■	■	■	■
Bob	■	•	•	■	•	•	■	•	■	•	■	•	■	■	■	■
Capa	■	■	■	■	■	◻	■	■	■	■	■	■	■	■	■	■
Chord	■	■	■	■	■	◻	■	■	■	■	■	■	■	■	■	■
Circa	■	■	■	■	■	◻	■	■	■	■	■	■	■	■	■	■
Coupe	■	■	■	■	■	◻	■	■	■	■	■	■	■	■	■	■
Davos	■	•	•	■	•	•	■	•	■	•	■	•	■	■	•	■
Detour	■	■	•	■	•	•	■	•	■	•	■	•	■	■	•	■
Emu Indoor Cushion	■	•	■	■	•	•	■	■	■	■	■	■	■	■	•	■
Enea	■	■	■	■	■	◻	■	■	■	■	■	■	■	■	■	■
Enea Lottus	■	•	•	■	•	•	■	•	■	•	■	•	■	■	•	■
Evaneau	■	■	■	■	■	◻	■	■	■	■	■	■	■	■	■	■
Exponents (Benches)	■	•	■	■	•	•	■	•	■	•	■	•	■	■	•	■
Herren	■	■	■	■	■	◻	■	■	■	■	■	■	■	■	■	■
Holy Day	■	•	•	■	•	•	■	•	■	•	■	•	■	■	•	■
Joel	■	•	•	■	•	•	■	•	■	•	■	•	■	■	•	■
Kart	■	■	■	■	■	◻	■	■	■	■	■	■	■	■	■	■
Kathryn	■	■	■	■	■	◻	■	■	■	■	■	■	■	■	■	■
La Costa Couture	■	■	■	■	■	◻	■	■	■	■	■	■	■	■	■	■
La Costa Sport	■	■	■	■	■	◻	■	■	■	■	■	■	■	■	■	■
Last Minute	■	•	•	■	•	•	■	•	■	•	■	•	■	■	•	■
Millbrae	■	■	■	■	■	◻	■	■	■	■	■	■	■	■	■	■
CH07	•	•	•	•	•	■	•	•	•	•	•	•	•	•	•	•
CH100	•	•	•	•	•	■	•	•	•	•	•	•	•	•	•	•
CH20	•	•	•	•	•	■	•	•	•	•	•	•	•	•	•	•
CH24	•	•	•	•	•	■	•	•	•	•	•	•	•	•	•	•
Ch25	•	•	•	•	•	■	•	•	•	•	•	•	•	•	•	•
Ch401	•	•	•	•	•	■	•	•	•	•	•	•	•	•	•	•
Ch44	•	•	•	•	•	■	•	•	•	•	•	•	•	•	•	•

► Continued on next page

*Tip: Thor Leather is available only on Carl Hansen models CH101L and CH103L.*

Disclaimer: Coalesse is pleased to provide this information. However, even after preliminary approval, Coalesse reserves the right to reject fabrics/leathers when necessary if the quality or construction is not satisfactory for the item it is intended for use on. Coalesse reserves the right to evaluate data daily and make any necessary changes or improvements to the information provided. Textile recommendations do not imply a warranty for the textiles. The textile manufacturer provides all warranties for textiles. All trademarks and trade names are the property of the different manufacturers. All pricing quotes for product should be obtained from your local Sales Representative or a Coalesse Customer Service Representative. Recommendations such as backing and CAL 133 will require additional cost and may require additional lead-time. All specifications are subject to change without notice.

# Leather and Faux Leather Matrix

*Note: Coalesse reserves the right to reject fabrics when necessary if the quality or construction is not satisfactory for intended use. For most up to date information on fabric usage please check the fabric database on [www.coalesse.com](http://www.coalesse.com).*

► Continued, from previous page

## Legend

- = Not available
- = Available
- ☐ = Must be ordered as COM or COL
- ☐ = Available but will have comfort wrinkles

► See specification pages in the Coalesse Specification Guides for details.

	Elmosoft Grade C	Elmosoft Pique Grade C	Elmotique Grade E	Elmonustical Grade E	Elmonustical Pique Grade E	Loke	Destiny Grade 11	Destiny Perforated Grade 13	Prestige Grade 11	Prestige Perforated Grade 13	Finesse Grade 11	Finesse Perforated Grade 13	Elegance Grade 12	Panache Grade 11	Panache Perforated Grade 13	Ovation Grade 11
Ch445	•	•	•	•	•	■	•	•	•	•	•	•	•	•	•	•
Passerelle	■	■	■	■	■	☐	■	■	■	■	■	■	■	■	■	■
Ripple	■	■	■	■	■	☐	■	■	■	■	■	■	■	■	■	■
Rocky	■	■	■	■	■	☐	■	■	■	■	■	■	■	■	■	■
Sidewalk	■	■	■	■	■	☐	■	■	■	■	■	■	■	■	■	■
SW_1	■	•	•	■	•	•	■	•	■	•	■	•	■	■	•	■
Swathmore	■	■	■	■	■	☐	■	■	■	■	■	■	■	■	■	■
Swathmore Grande	■	■	■	■	■	☐	■	■	■	■	■	■	■	■	■	■
Switch	■	■	■	■	■	☐	■	■	■	■	■	■	■	■	■	■
Thoughtful	■	■	■	■	■	☐	■	■	■	■	■	■	■	■	■	■
Together	☐	•	•	☐	•	•	☐	•	☐	•	☐	•	☐	☐	•	■
Topo Lounge	■	■	•	■	•	•	■	•	■	•	■	•	■	■	•	■
Topo Mobile Lounge	■	■	•	■	•	•	■	•	■	•	■	•	■	■	•	■
Visalia	■	■	■	■	■	☐	■	■	■	■	■	■	■	■	■	■
Wrapp	■	•	•	■	•	•	■	■	■	■	■	■	■	■	■	■
X-Stack	•	•	•	•	•	•	•	•	■	•	•	•	•	•	•	•
Massaud	■	■	•	■	■	•	•	•	■	■	■	■	■	■	■	■
Lagunitas	■	■	•	■	■	•	■	■	■	■	■	■	■	■	■	■
Lox	■	■	■	■	■	•	■	•	■	•	■	•	■	■	•	■

Disclaimer: Coalesse is pleased to provide this information. However, even after preliminary approval, Coalesse reserves the right to reject fabrics/leathers when necessary if the quality or construction is not satisfactory for the item it is intended for use on. Coalesse reserves the right to evaluate data daily and make any necessary changes or improvements to the information provided. Textile recommendations do not imply a warranty for the textiles. The textile manufacturer provides all warranties for textiles. All trademarks and trade names are the property of the different manufacturers. All pricing quotes for product should be obtained from your local Sales Representative or a Coalesse Customer Service Representative. Recommendations such as backing and CAL 133 will require additional cost and may require additional lead-time. All specifications are subject to change without notice.

# Leather Palette

*Note: Coalesse reserves the right to reject fabrics when necessary if the quality or construction is not satisfactory for intended use. For most up to date information on fabric usage please check the fabric database on [www.coalesse.com](http://www.coalesse.com).*

► See Leather and Faux Leather Matrix for availability by product list, page 14. ► See Pique color numbers on page 10.

## Elmosoft

							
Maritime Blue L110	Midnight Blue L111	Ebony L112	Gunmetal L113	Mica L114	Dove Grey L115	Plum Pleasure L116	Truffle L122
							
Red Birch L128	Violet L132	Espresso L133	Ruby L134	Scarlet L135	Claret L136	Cabernet L137	Bourbon L138
							
Cinder L139	Garnet L140	Pecan L143	Chamois L144	Palomino L145	Russet L146	Saddle L147	Goldstone L148
							
Ivory L150	White L151	Sugar L709	Lava L710	Parchment L711	Buff L712	Sand L713	Maize L714
							
Carnel L715	Khaki L716	Cameo L717	Mushroom L718	Taupe L719	Fawn L720	Rock L721	Desert L722
							
Storm L723	Mist L724	Teal L725	Celadon L726	Egyptian Blue L727	Bright Blue L728	Aquarium L729	Hunter L730
							
Fern L731	Edamame L732	Moss L733	Key Lime L734	Creamsicle L735	Lemon L736	Sunshine L737	Drama L738

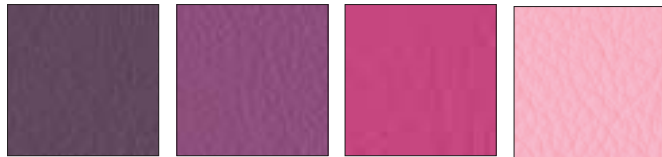


# Leather Palette

*Note: Coalesse reserves the right to reject fabrics when necessary if the quality or construction is not satisfactory for intended use. For most up to date information on fabric usage please check the fabric database on [www.coalesse.com](http://www.coalesse.com).*

► See Leather and Faux Leather Matrix for availability by product list, page 14. ► See Pique color numbers on page 10.

## Elmosoft (continued)



Byzantium  
L739

Dazzle  
L740

Fuchsia  
L741

Flamingo  
L742

## Elmorustical



Loam  
L318

Ebony  
L319

Beige  
L321

Buff  
L323

Camel  
L325

Charbrown  
L326

Flame  
L330

Honey  
L332



Mist Green  
L334

Russet  
L337

Rust  
L338

Tendril  
L363

Fog  
L364

Sunflower  
L365

Terra Cotta  
L366

Cadet  
L367



Marine  
L368

Mallard  
L369

Smoke  
L370

Merlot  
L371

Twilight  
LD54

## Elmotique



Sagebrush  
L310

Flaxen  
L311

Earth  
L312

Clay  
L313

Blue Mountain  
L314

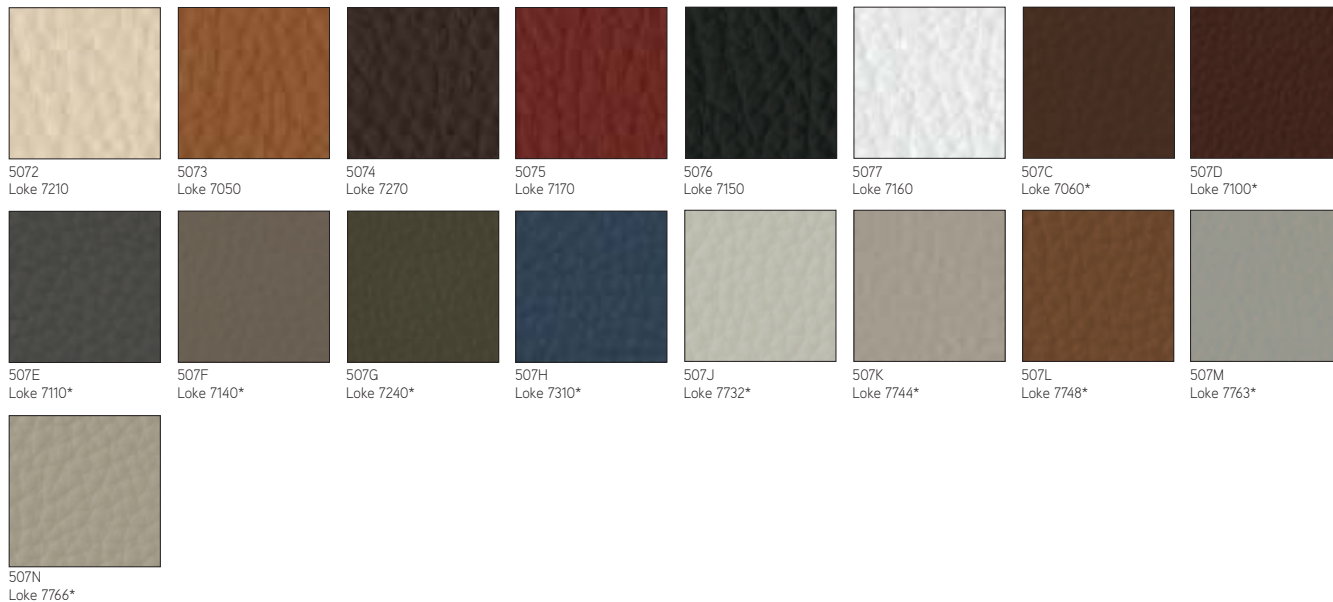
Juniper  
L315

# Leather Palette continued

*Note: Coalesse reserves the right to reject fabrics when necessary if the quality or construction is not satisfactory for intended use. For most up to date information on fabric usage please check the fabric database on [www.coalesse.com](http://www.coalesse.com).*

► See Leather and Faux Leather Matrix for availability by product list, page 14. ► See Pique color numbers on page 10.

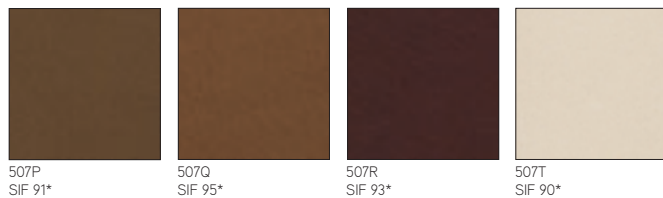
## Loke (Carl Hansen only)



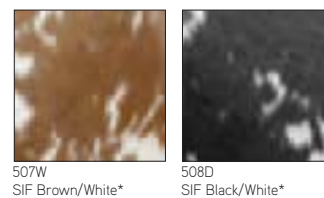
## Thor (Carl Hansen only)



## SIF (Carl Hansen only)



## Cowhides



\*Available Summer 2015

# Faux Leather Palette

*Note: Coalesse reserves the right to reject fabrics when necessary if the quality or construction is not satisfactory for intended use. For most up to date information on fabric usage please check the fabric database on [www.coalesse.com](http://www.coalesse.com).*



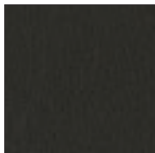
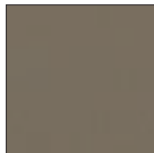

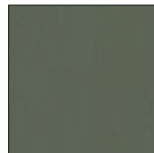






► See Leather and Faux Leather Matrix for availability by product list, page 14. ► See Pique color numbers on page 10.

## Destiny

							
Black DY01	Raisin DY02	Blue berry DY03	Chestnut DY04	Cedar DY05	Black Rose DY06	Wine DY07	Dune DY09
							
Truffle DY10	Oak DY11	Newport DY12	Evergreen DY13	Storm DY14	Juniper DY15	Olive DY16	Mocha DY17
							
Ash DY18	Butter DY21	Deep Red DY23	Eggshell DY24	Parchment DY26	Periwinkle DY27	Royal Purple DY30	Saddle DY31
							
Cactus Green DY32	Cypress DY33	Mink DY34	Football DY35	Root DY36			

Surface Materials -  
Leather/Faux

## Elegance

							
Ivory EL01	Cream EL02	Char EL03	Saddle EL04	Dune EL05	Camel EL06	Sage EL07	Grey EL08
							
Walnut EL09	Burgundy EL10	Green EL11	Navy EL12	Black EL13			

# Faux Leather Palette continued

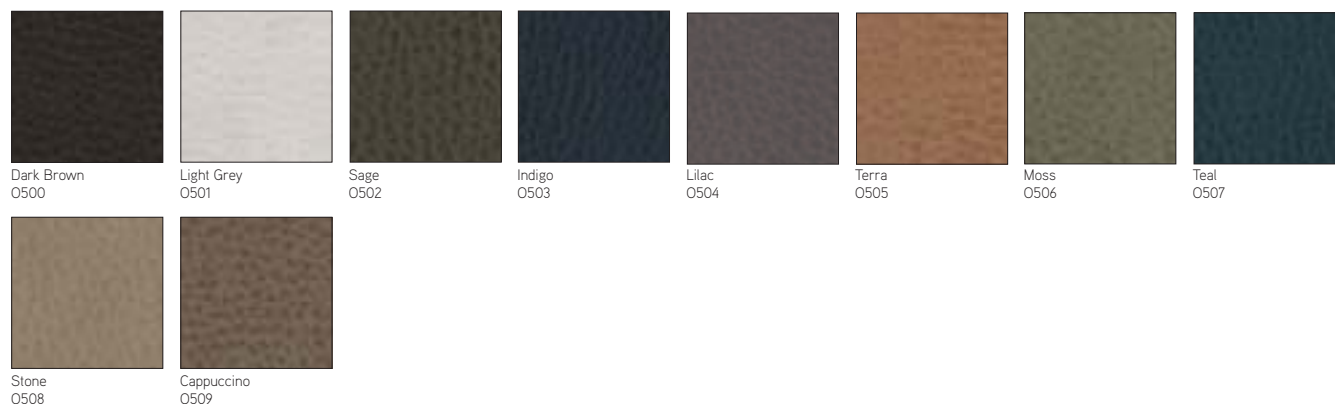
*Note: Coalesse reserves the right to reject fabrics when necessary if the quality or construction is not satisfactory for intended use. For most up to date information on fabric usage please check the fabric database on [www.coalesse.com](http://www.coalesse.com).*

► See Leather and Faux Leather Matrix for availability by product list, page 14. ► See Pique color numbers on page 10.

## Finesse



## Ovation

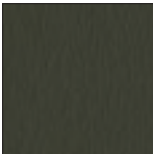
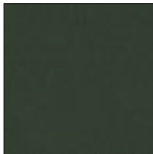
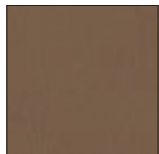



# Faux Leather Palette

*Note: Coalesse reserves the right to reject fabrics when necessary if the quality or construction is not satisfactory for intended use. For most up to date information on fabric usage please check the fabric database on [www.coalesse.com](http://www.coalesse.com).*

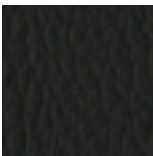

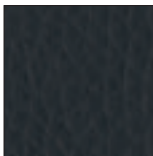









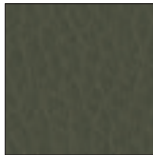
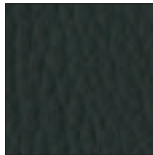
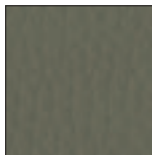
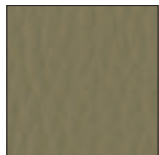

► See Leather and Faux Leather Matrix for availability by product list, page 14. ► See Pique color numbers on page 10.

## Panache

							
Ebony P800	Cactus P801	Sherwood P802	Teal Blue P803	Sweet Sage P804	Coffee P805	True Taupe P806	Cashew P807
							
Acorn P808	Redwood P809	Exotic Orchid P810	Maize P811	Chartreuse P812	Regal Blue P813		

Surface Materials -  
Leather/Faux

## Prestige

							
Onyx AFA1	Soft White AFB2	Saxe Blue AFC3	Buff AFD3	Antique White AFDG	Sandstone AFE1	Pecan AFH1	Buttercream AFH2
							
Havana AFI1	Brick AFI2	Parchment AFK1	French Grey AFL8	Willow AFP1	Boxwood Green AFP2	Tree Moss AFPA	Celadon AFPC
							
Wild Plum AFS3							

# Surface Materials - Wood

## Wood

### Standard Wood Finishes

Coalesse's primary wood finish, Clarity, is a water-borne UV topcoat, which protects the environment while providing exceptional durability and resistance to water and chemical stains. Contoured products, such as wood side chairs and occasional tables, are finished with post-catalyzed vinyl, which provides similar properties and matches the sheen and color of Clarity. Due to natural variations in wood, finished products may vary from samples in color, texture, and grain.

**Wood** will develop a deep, rich patina over time as the wood ages. Mineral streaks, gum pockets, and pin knots are some of the unique characteristics that are visible in veneers and solids.

**All wood products** will darken with age and exposure to ultraviolet light. This is especially apparent with cherry and maple veneer.

When storing your wood furniture, please follow the following guidelines:

- Do not store products in trailers
- Store products in areas that simulate office temperatures (60°F to 90°F)
- Store products in areas that maintain constant, office-like humidity levels
- Keep product away from light. Cover products to make sure they are not exposed to light.

**Samples** contact Customer Service at 1.800.627.6770

### Steelcase Wood Finishes

**Coalesse** will match current Steelcase wood finishes at no upcharge. Finish matches are for color only and do not match the Steelcase finish in sheen. Samples will be provided upon request from Customer Service at 1.800.627.6770 and will be produced within 10 working days.

### Stain-To-Match Wood Finish on cherry, maple, walnut, or oak

Coalesse will Stain-To-Match any wood finish at no upcharge. Samples submitted for matching must be at least 12" x 12" in surface dimension. Customers must specify cherry, maple, oak, or walnut species. Coalesse will produce a strike-off within 5 working days following acknowledgment of the order. Coalesse will not schedule the order for production until the strike-off has been approved and received by Coalesse.

### Painted MDF

**The painted medium density fiberboard (MDF)** is utilizing molding grade MDF, therefore, the 45 lb density is consistent throughout the entire thickness of the board. This allows for a smooth edge when painted. Three coats of water reducible finish is applied to the board in a milk or black. The painted MDF has durability and care properties like a wood veneer, thus, must be treated as such.

### Veneer Specifications

#### Cherry

- American Black Cherry
- Flat cut, plain sliced/book matched
- Quarter cut/book matched
- Narrow cathedrals, mild grain, minimal pitch
- 5-10" wide leaves of 1/42" thick veneer, balanced on panel
- No gaps between leaves
- PB (particle board) core
- Low sheen 15 or high sheen 35

#### Maple

- Eastern Hard White Maple
- Flat cut, plain sliced/slip matched
- Quarter cut/book matched
- Narrow cathedrals, mild grain, minimal pitch
- 5-10" wide leaves of 1/42" thick veneer, balanced on panel
- No gaps between leaves
- PB (particle board) core
- Low sheen 15 or high sheen 35

#### Oak

- White Oak
- Rift cut
- Slip match
- Mild grain
- 4-8" wide leaves of 1/42" thick veneer, balanced on panel
- No gaps between leaves
- PB (particle board) core
- Low sheen 15 or high sheen 35

#### Walnut

- American Black Walnut
- Flat cut, plain sliced/book matched
- Quarter cut/book matched
- Narrow cathedrals, mild grain
- 5-10" wide leaves of 1/42" thick veneer, balanced on panel
- No gaps between leaves
- PB (particle board) core
- Low sheen 15 or high sheen 35

Exclusive (by product)

#### Teak

- Quarter cut/book match
- 15 sheen

#### Ash (Grey)

- Quarter cut/book match
- 15 sheen

### Flat-cut – High Sheen

#### Grade 1

- V10C FC/HS Natural Cherry
- V11C FC/HS Clear Cherry
- V12C FC/HS Medium Amber Cherry
- V13C FC/HS Dark Cherry
- V10M FC/HS Clear Maple
- V11M FC/HS Natural Beech on Maple
- V12M FC/HS Medium Maple
- V10W FC/HS Natural Walnut
- V11W FC/HS Clear Walnut
- V12W FC/HS Medium Walnut
- V13W FC/HS Black Walnut
- V14W FC/HS Dark Walnut

### Flat-cut – Low Sheen

#### Grade 1

- V1AC FC/LS Natural Cherry
- V1BC FC/LS Clear Cherry
- V1CC FC/LS Medium Amber Cherry
- V1DC FC/LS Dark Cherry
- V1AM FC/LS Clear Maple
- V1BM FC/LS Natural Beech on Maple
- V1CM FC/LS Medium Maple
- V1AW FC/LS Natural Walnut
- V1BW FC/LS Clear Walnut
- V1CW FC/LS Medium Walnut
- V1EW FC/LS Dark Walnut

### Rift-cut – High Sheen

#### Grade 1

- V30K RC/HS Natural Oak
- V31K RC/HS Desert Oak
- V32K RC/HS Medium Brown Oak
- V33K RC/HS Medium Gray Oak
- V34K RC/HS Black Brown Oak

### Rift-cut – Low Sheen

#### Grade 1

- V3AK RC/LS Natural Oak
- V3BK RC/LS Desert Oak
- V3CK RC/LS Medium Brown Oak
- V3DK RC/LS Medium Gray Oak
- V3EK RC/LS Black Brown Oak

### Quarter-cut – High Sheen

#### Grade 2

- V20C QC/HS Natural Cherry
- V21C QC/HS Clear Cherry
- V22C QC/HS Medium Amber Cherry
- V23C QC/HS Dark Cherry
- V20M QC/HS Clear Maple
- V21M QC/HS Natural Beech on Maple
- V22M QC/HS Medium Maple
- V20W QC/HS Natural Walnut
- V21W QC/HS Clear Walnut
- V22W QC/HS Medium Walnut
- V23W QC/HS Black Walnut
- V24W QC/HS Dark Walnut

FC=Flat Cut  
RC=Rift Cut  
QC=Quarter Cut  
WL=Wedge Lay-up  
HS=High Sheen  
LS=Low Sheen

# Surface Materials - Wood

*Tip: When specifying for hardwood chairs and occasional tables, select from Flat Cut or Rift Cut style numbers only.*

## Quarter-cut – Low Sheen

### Grade 2

V2AA	QC/LS Ash Natural FSC
V2AC	QC/LS Natural Cherry
V2BC	QC/LS Clear Cherry
V2CC	QC/LS Medium Amber Cherry
V2DC	QC/LS Dark Cherry
V2AM	QC/LS Clear Maple
V2BM	QC/LS Natural Beech on Maple
V2CM	QC/LS Medium Maple
V2AW	QC/LS Natural Walnut
V2BW	QC/LS Clear Walnut
V2CW	QC/LS Medium Walnut
V2EW	QC/LS Dark Walnut
V2AT	QC/LS Teak Natural Raw FSC

## Wedge Lay-up\* – Flat cut – High Sheen

### Grade 1

W10C	WC/FC/HS Natural (Raw) Cherry
W11C	WC/FC/HS Clear Cherry
W12C	WC/FC/HS Medium Amber Cherry
W13C	WC/FC/HS Dark Cherry
W10M	WC/FC/HS Clear Maple
W11M	WC/FC/HS Natural Beech on Maple
W12M	WC/FC/HS Medium Maple
W10W	WC/FC/HS Natural (Raw) Walnut
W11W	WC/FC/HS Clear Walnut
W12W	WC/FC/HS Medium Walnut
W13W	WC/FC/HS Black Walnut
W14W	WC/FC/HS Dark Walnut

## Wedge Lay-up\* – Flat cut – Low Sheen

### Grade 1

W1AC	WC/FC/LS Natural (Raw) Cherry
W1BC	WC/FC/LS Clear Cherry
W1CC	WC/FC/LS Medium Amber Cherry
W1DC	WC/FC/LS Dark Cherry
W1AM	WC/FC/LS Clear Maple
W1BM	WC/FC/LS Natural Beech on Maple
W1CM	WC/FC/LS Medium Maple
W1AW	WC/FC/LS Natural (Raw) Walnut
W1BW	WC/FC/LS Clear Walnut
W1CW	WC/FC/LS Medium Walnut
W1EW	WC/FC/LS Dark Walnut

## Wedge Lay-up\* – Rift cut – High Sheen

### Grade 1

W30K	WC/RC/HS Natural (Raw) Oak
W31K	WC/RC/HS Desert Oak
W32K	WC/RC/HS Medium Brown Oak
W33K	WC/RC/HS Medium Gray Oak
W34K	WC/RC/HS Black Brown Oak

## Wedge Lay-up\* – Rift cut – Low Sheen

### Grade 1

W3AK	WC/RC/LS Natural (Raw) Oak
W3BK	WC/RC/LS Desert Oak
W3CK	WC/RC/LS Medium Brown Oak
W3DK	WC/RC/LS Medium Gray Oak
W3EK	WC/RC/LS Black Brown Oak

FC=Flat Cut  
RC=Rift Cut  
QC=Quarter Cut  
WL=Wedge Lay-up  
HS=High Sheen  
LS=Low Sheen

## Wedge Lay-up\* – Quarter cut – High Sheen

### Grade 2

W20C	WC/QC/HS Natural (Raw) Cherry
W21C	WC/QC/HS Clear Cherry
W22C	WC/QC/HS Medium Amber Cherry
W23C	WC/QC/HS Dark Cherry
W20M	WC/QC/HS Clear Maple
W21M	WC/QC/HS Natural Beech on Maple
W22M	WC/QC/HS Medium Maple
W20W	WC/QC/HS Natural (Raw) Walnut
W21W	WC/QC/HS Clear Walnut
W22W	WC/QC/HS Medium Walnut
W23W	WC/QC/HS Black Walnut
W24W	WC/QC/HS Dark Walnut

## Wedge Lay-up\* – Quarter cut – Low Sheen

### Grade 2

W2AC	WC/QC/LS Natural (Raw) Cherry
W2BC	WC/QC/LS Clear Cherry
W2CC	WC/QC/LS Medium Amber Cherry
W2DC	WC/QC/LS Dark Cherry
W2AM	WC/QC/LS Clear Maple
W2BM	WC/QC/LS Natural Beech on Maple
W2CM	WC/QC/LS Medium Maple
W2AW	WC/QC/LS Natural (Raw) Walnut
W2BW	WC/QC/LS Clear Walnut
W2CW	WC/QC/LS Medium Walnut
W2EW	WC/QC/LS Dark Walnut

\*Available on select tables, refer to pricing pages in the Coalesse Specification Guides for availability.

## Applies to: Carl Hansen and Son

3103	Oak/Walnut Oil***
3105	Oak/Walnut Lacquer***
3208	Azure Blue
3209	Light Blue
3210	Petrol Blue
3211	Spring Green
3213	Light Green
3216	Lime Green
3218	Mint Green
3219	Dark Purple
3220	Lavender Purple
3221	Light Purple
3223	Ivory White
3225	Oak Soap***
3227	Oak Oil***
3228	Anthracite Gray
3229	Red Brown
3233	Smoked Oak Oil***
3235	Oak Black***
3236	Olive Green
3237	Purple Blue
3238	Steel Blue
3239	Petrol Green
3245	Black Lacquer over Oak
3246	White
3247	Dark Blue
3248	Orange Red
3251	Berry Red
3253	Grass Green
3255	Oak Lacquer
3256	Natural White
3265	Oak White Oil
3267	Silver Gray
3268	Vanilla White
3269	Black***
3325	Walnut Lacquer
3335	Walnut Oil

3407	Cherry Lacquer
3417	Cherry Oil***
3603	Ash Soap***
3605	Ash Oil***
3615	Ash Lacquer
3645	Ash White Oil
3733	Beech Soap***
3745	Beech Lacquer***
3753	Beech Oil***
3783	Smoked Oak Lacquer***
3795	Ash Black***

\*\*3246 available on CH07 Shell, CH20 Elbow, CH24 Wishbone, and CH88 only.  
3247 and 3248 available on CH24 Wishbone, and CH88.

*Tip: When specifying for hardwood chairs and occasional tables, select from Flat Cut or Rift Cut style numbers only.*

## Painted MDF

### Applies to: Exponents

V145	Milk
V197	Black

\*\*\* Available Summer 2015

# Hardwood Matrix

For Conference Chair Bases, Side Chairs, Occasional Tables, and Lounge Chairs

## Legend

- = Not available
- = Available
- = Stain color only on maple
- = Stain color on Beech
- See specification pages in the Coalesse Specification Guides for details.

## Seating

Archipelago Tablet	■	■	•	•	■	■	•	•	•	■	■	■	•	•	•	•	•	•	•	•	•
Astor	■	■	•	•	■	■	•	•	•	■	■	■	•	•	•	•	•	•	•	•	•
Circa	■	■	•	•	■	■	•	•	■	■	■	■	•	•	•	•	•	•	•	•	•
Coupe	■	■	•	•	■	■	•	•	■	■	■	■	•	•	•	•	•	•	•	•	•
Detour Tablet	■	■	•	•	■	■	•	•	■	■	■	■	•	•	•	•	•	•	•	•	•
Enea	■	■	•	•	■	■	•	•	■	■	■	■	•	•	•	•	•	•	•	•	•
Kathryn	■	■	•	•	■	■	•	•	■	■	■	■	•	•	•	•	•	•	•	•	•
La Costa Couture	■	■	•	•	■	■	•	•	■	■	■	■	•	•	•	•	•	•	•	•	•
La Costa Sport	■	■	•	•	■	■	•	•	■	■	■	■	•	•	•	•	•	•	•	•	•
Passerelle	■	■	•	•	■	■	•	•	■	■	■	■	•	•	•	•	•	•	•	•	•
Sidewalk	■	■	•	•	■	■	•	•	■	■	■	■	•	•	•	•	•	•	•	•	•
Swathmore	■	■	•	•	■	■	•	•	■	■	■	■	•	•	•	•	•	•	•	•	•
Swathmore Grande	■	■	•	•	■	■	•	•	■	■	■	■	•	•	•	•	•	•	•	•	•
Thoughtful	■	■	•	•	■	■	•	•	■	■	■	■	•	•	•	•	•	•	•	•	•
CH07	•	•	•	•	•	•	•	•	•	•	•	•	•	•	•	•	•	•	•	•	■
CH100	•	•	•	•	•	•	•	•	•	•	•	•	•	•	•	•	•	•	•	•	■
CH20	•	•	•	•	•	•	•	•	•	•	•	•	•	•	•	•	•	•	•	•	■
CH24	•	•	•	•	•	•	•	•	•	•	•	•	•	•	•	•	•	•	•	•	■
CH25	•	•	•	•	•	•	•	•	•	•	•	•	•	•	•	•	•	•	•	•	■
CH88	•	•	•	•	•	•	•	•	•	•	•	•	•	•	•	•	•	•	•	•	■
CH401	•	•	•	•	•	•	•	•	•	•	•	•	•	•	•	•	•	•	•	•	■
CH44	•	•	•	•	•	•	•	•	•	•	•	•	•	•	•	•	•	•	•	•	■
CH445	•	•	•	•	•	•	•	•	•	•	•	•	•	•	•	•	•	•	•	•	■
CH468	•	•	•	•	•	•	•	•	•	•	•	•	•	•	•	•	•	•	•	•	■

► Continued on next page

\* Select colors only: V1AW Natural Walnut, V1EW Dark Walnut, V3AK Natural Oak, V3EK Black Brown Oak



# Hardwood Matrix

For Conference Chair Bases, Side Chairs, Occasional Tables, and Lounge Chairs

► Continued from previous page

## Legend

- = Not available
- = Available
- = Stain color only on maple
- See specification pages in the Coalesse Specification Guides for details.

## Occasional Tables

Avon	■	■	•	•	M	M	•	•	M	M	M	M	•	•	•	•	•	•	•
Bix Tables	■	■	■	■	■	■	■	■	■	■	■	■	■	■	•	•	•	•	•
Calm	■	■	•	•	M	M	•	•	M	M	■	■	•	•	•	•	•	•	•
CG_1	•	•	•	•	•	•	•	•	■	■	■	■	■	■	•	•	•	•	•
CH53	•	•	•	•	•	•	•	•	•	•	•	•	•	•	•	•	•	•	■
Circa	■	■	•	•	M	M	•	•	M	M	■	■	•	•	•	•	•	•	•
Denizen Tablet	•	•	•	■	•	•	•	■	•	■	•	•	•	■	■	■	•	•	•
Diekman	■	■	•	•	M	M	•	•	M	M	M	M	•	•	•	•	•	•	•
Enea	■	■	•	•	M	M	•	•	M	M	M	M	•	•	•	•	•	•	•
Ginger	■	■	•	•	M	M	•	•	M	M	M	M	•	•	•	•	•	•	•
Holy Day*	•	•	•	•	•	•	•	•	•	■	•	■	•	•	•	•	•	•	•
Passerelle	■	■	•	•	M	M	•	•	M	M	M	M	•	•	•	•	•	•	•
TeamWork	■	■	■	■	■	■	■	■	■	■	■	■	■	■	•	•	•	•	•

## Seating

Bix Podium Drawer Front	■	•	■	•	■	•	■	•	■	•	■	•	■	•	•	•	•	•	•
-------------------------	---	---	---	---	---	---	---	---	---	---	---	---	---	---	---	---	---	---	---

\* Select colors only: V1AW Natural Walnut, V1EW Dark Walnut, V3AK Natural Oak, V3EK Black Brown Oak

# Hardwood Stains Palette

For Conference Chair Bases, Side Chairs, Occasional Tables, and Lounge Chairs

► See Hardwood Matrix for availability by product list, page 24.

*Tip: When specifying for hardwood chairs, lounge chairs, and occasional tables select from Flat Cut or Rift Cut finish numbers only.*

## High Sheen



Clear Maple  
V10M



Natural Beech on Maple  
V11M



Medium Maple  
V12M



Natural Cherry  
V10C



Clear Cherry  
V11C



Medium Amber Cherry  
V12C



Dark Cherry  
V13C



Natural Walnut  
V10W



Clear Walnut  
V11W



Medium Walnut  
V12W



Black Walnut  
V13W



Dark Walnut  
V14W

All stains on maple except:  
Holy Day-stain on Oak (V3AK, V3EK) and Walnut (V1EW, V1AW)  
Kathryn-stain on Beech  
Circa-Maple, Cherry, and Oak on Maple; Walnut on Walnut  
Coupe-Maple, Cherry, and Oak on Maple; Walnut on Walnut

## Low Sheen



Clear Maple  
V1AM



Natural Beech on Maple  
V1BM



Medium Maple  
V1CM



Natural Cherry  
V1AC



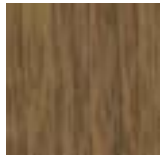
Clear Cherry  
V1BC



Medium Amber Cherry  
V1CC



Dark Cherry  
V1DC



Natural Walnut  
V1AW



Clear Walnut  
V1BW



Medium Walnut  
V1CW



Dark Walnut  
V1EW

All stains on maple except:  
Holy Day-stain on Oak (V3AK, V3EK) and Walnut (V1EW, V1AW)  
Kathryn-stain on Beech  
Circa-Maple, Cherry, and Oak on Maple; Walnut on Walnut  
Coupe-Maple, Cherry, and Oak on Maple; Walnut on Walnut

## High Sheen



Natural Oak  
V3OK



Desert Oak  
V31K



Medium Brown Oak  
V32K



Medium Gray Oak  
V33K



Black Brown Oak  
V34K

All stains on maple except:  
Holy Day-stain on Oak (V3AK, V3EK) and Walnut (V1EW, V1AW)  
Kathryn-stain on Beech  
Circa-Maple, Cherry, and Oak on Maple; Walnut on Walnut  
Coupe-Maple, Cherry, and Oak on Maple; Walnut on Walnut

## Low Sheen



Natural Oak  
V3AK



Desert Oak  
V3BK



Medium Brown Oak  
V3CK



Medium Gray Oak  
V3DK



Black Brown Oak  
V3EK

All stains on maple except:  
Holy Day-stain on Oak (V3AK, V3EK) and Walnut (V1EW, V1AW)  
Kathryn-stain on Beech  
Circa-Maple, Cherry, and Oak on Maple; Walnut on Walnut  
Coupe-Maple, Cherry, and Oak on Maple; Walnut on Walnut

► Continued on next page

# Hardwood Stains Palette continued

For Conference Chair Bases, Side Chairs, Occasional Tables, and Lounge Chairs

► See Hardwood Matrix for availability by product list, page 24.

*Tip: When specifying for hardwood chairs, lounge chairs, and occasional tables select from Flat Cut or Rift Cut finish numbers only.*

## Carl Hansen Wood

							
Oak Walnut Oil 3103**	Oak Walnut Lacquer 3105**	Azure Blue 3208*	Light Blue 3209*	Petrol Blue 3210*	Spring Green 3211*	Light Green 3213*	Lime Green 3216*
							
Mint Green 3218*	Dark Purple 3219*	Lavender Purple 3220*	Light Purple 3221*	Ivory White 3223*	Oak Soap 3225**	Oak Oil 3227**	Anthracite Gray 3228
							
Red Brown 3229	Smoked Oak Oil 3233**	Oak Black 3235**	Olive Green 3236	Purple Blue 3237	Steel Blue 3238	Petrol Green 3239	Black Lacquer over Oak 3245
							
White 3246	Dark Blue 3247*	Orange Red 3248	Berry Red 3251	Grass Green 3253	Oak Lacquer 3255	Natural White 3256	Oak White Oil 3265
							
Silver Gray 3267	Vanilla White 3268	Black 3269**	Walnut Lacquer 3325	Walnut Oil 3335	Cherry Lacquer 3407	Cherry Oil 3417**	Ash Soap 3603**
							
Ash Oil 3605**	Ash Lacquer 3615	Ash White Oil 3645	Beech Soap 3733**	Beech Lacquer 3745**	Beech Oil 3753**	Smoked Oak Lacquer 3783**	Ash Black 3795**

*Tip: 3246 available on CH07 Shell, CH20 Elbow, and CH24 Wishbone only.*

*\*Tip: Available on CH24 Wishbone only.*

*\*\*Available Summer 2015*

# Veneer Matrix

For Conference and Multipurpose Tables, Storage, Casegoods, and Occasional Tables

## Legend

- = Not available
- = Available
- = Stain color only
- ▶ See specification pages for details.

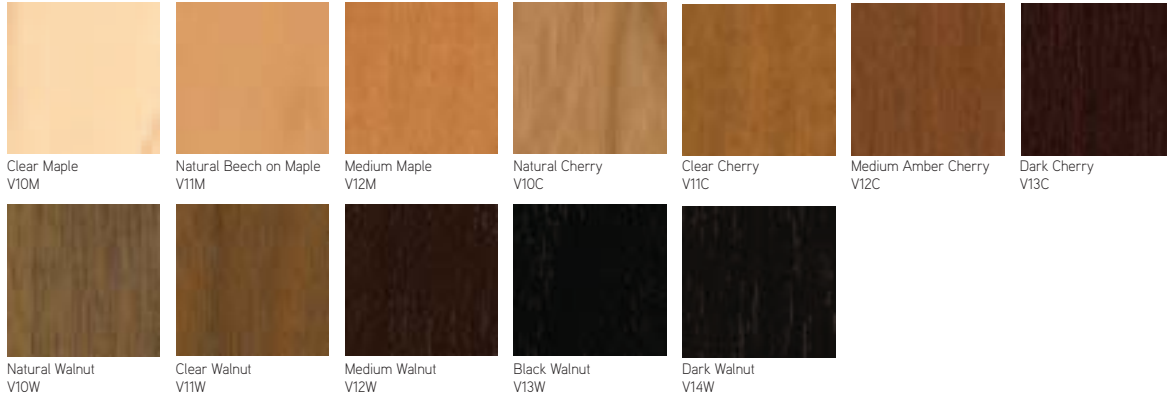
Legend																						
• = Not available																						
■ = Available																						
■ = Stain color only																						
►See specification pages for details.																						
	Maple Flat Cut – High Sheen	Maple Flat Cut – Low Sheen	Maple Quarter Cut – High Sheen	Maple Quarter Cut – Low Sheen	Cherry Flat Cut – High Sheen	Cherry Flat Cut – Low Sheen	Cherry Quarter Cut – High Sheen	Cherry Quarter Cut – Low Sheen	Oak Rift Cut – High Sheen	Oak Rift Cut – Low Sheen	Walnut Flat Cut – High Sheen	Walnut Flat Cut – Low Sheen	Walnut Quarter Cut – High Sheen	Walnut Quarter Cut – Low Sheen	Teak Quarter Cut – Low Sheen	Grey Ash – Low Sheen	Wedge Cut Veneers – Any Species	Transolid – Corian	Exclusive Finishes for Trees	Carl Hansen Exclusive Wood Finishes	Milk MDF	Black MDF
Tables and Casegoods																						
Akira	■	■	■	■	■	■	■	■	■	■	■	■	■	■	•	•	•	•	•	•	•	
CG_1	•	•	•	•	•	•	•	•	■	■	■	■	■	■	•	•	•	•	•	•	•	
Denizen Casegoods	•	•	•	■	•	•	•	■	•	■	•	•	•	■	■	■	•	•	•	•	•	
Denizen Tables	•	•	•	■	•	•	•	■	•	■	•	•	•	■	■	■	•	■	•	•	•	
Derby	■	■	■	■	■	■	■	■	■	■	■	■	■	■	•	•	•	•	•	•	•	
Detour	■	■	■	■	■	■	■	■	■	■	■	■	■	■	•	•	•	•	•	•	•	
E-Tables 2	■	■	■	■	■	■	■	■	■	■	■	■	■	■	•	•	•	•	•	•	•	
Enea	■	■	•	•	■	■	•	•	■	■	■	■	■	■	•	•	•	•	•	•	•	
Enea Lottus	■	■	•	•	■	■	•	•	■	■	■	■	■	■	•	•	•	•	•	•	•	
Exponents	■	■	■	■	■	■	■	■	■	■	■	■	■	■	•	•	•	■	•	•	■	
Ginkgo Biloba	■	■	■	■	■	■	■	■	■	■	■	■	■	■	•	•	•	•	•	•	•	
Host Collection	■	■	■	■	■	■	■	■	■	■	■	■	■	■	•	•	•	•	•	•	•	
Lagunitas	■	■	■	■	■	■	■	■	•	•	■	■	■	■	•	•	•	•	•	•	•	
Reunion Collection	■	■	■	■	■	■	■	■	■	■	■	■	■	■	•	•	•	•	•	•	•	
Runner	■	■	■	■	■	■	■	■	■	■	■	■	■	■	•	•	•	•	•	•	•	
Sebastopol	•	•	•	•	•	•	•	•	■	■	■	■	■	■	•	•	•	•	•	•	•	
SW_1	■	■	■	■	■	■	■	■	■	■	■	■	■	■	•	•	•	■	•	•	•	
TeamWork	■	■	■	■	■	■	■	■	■	■	■	■	■	■	•	•	•	•	•	•	•	
Trees	•	•	•	•	•	•	•	•	•	•	•	•	•	•	•	•	•	•	■	•	•	

# Veneer Palette

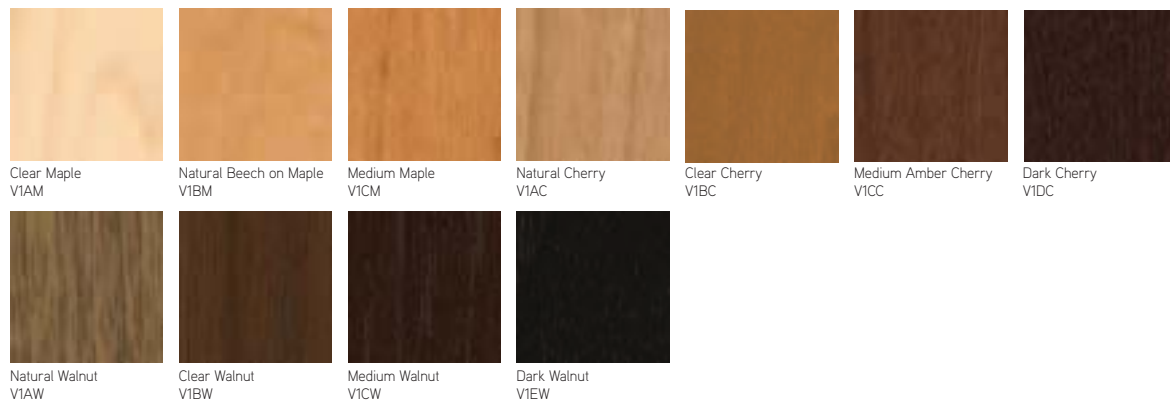
For Conference and Multipurpose Tables, Storage, and Casegoods

► See Veneer Matrix for availability by product list, page 28.

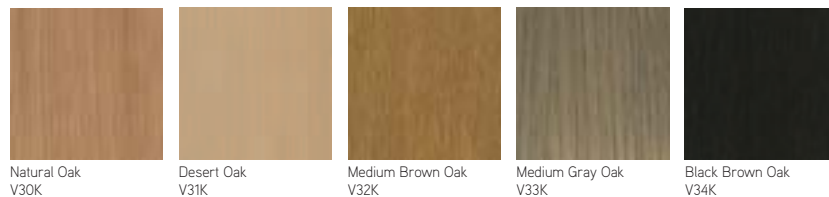
## Flat Cut – High Sheen



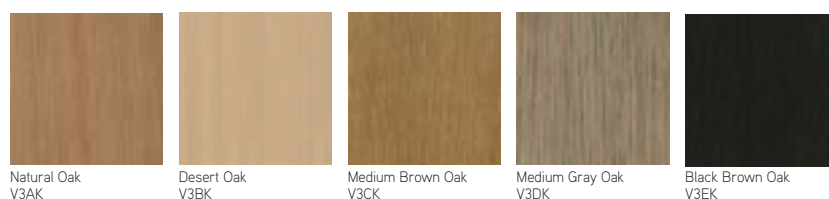
## Flat Cut – Low Sheen



## Rift Cut – High Sheen



## Rift Cut – Low Sheen



# Veneer Palette *continued*

For Conference and Multipurpose Tables, Storage, and Casegoods

► See Veneer Matrix for availability by product list, page 28.

## Quarter Cut – High Sheen



Clear Maple  
V20M



Natural Beech on Maple  
V21M



Medium Maple  
V22M



Natural Cherry  
V20C



Clear Cherry  
V21C



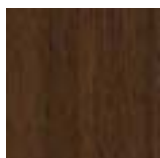
Medium Amber Cherry  
V22C



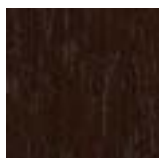
Dark Cherry  
V23C



Natural Walnut  
V20W



Clear Walnut  
V21W



Medium Walnut  
V22W



Dark Walnut  
V24W



Black Walnut  
V23W

## Quarter Cut – Low Sheen



Clear Maple  
V2AM



Natural Beech on Maple  
V2BM



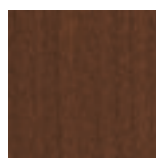
Medium Maple  
V2CM



Natural Cherry  
V2AC



Clear Cherry  
V2BC



Medium Amber Cherry  
V2CC



Dark Cherry  
V2DC



Natural Walnut  
V2AW



Clear Walnut  
V2BW



Medium Walnut  
V2CW



Dark Walnut  
V2EW

## Denizen Wood



Quarter Cut Grey Ash  
V2AA



Quarter Cut Teak  
V2AT



Rift Cut Oak  
V3AK

# Veneer Palette

For Conference and Multipurpose Tables, Storage, and Caseworks

► See Veneer Matrix for availability by product list, page 28.

---

## Exponents Painted MDF



Milk  
V145



Black  
V197

---

## Trees Embossed Wood



Black  
EWBK



Medium Brown  
EWMB



Natural  
EWNT

# Surface Materials -Laminate

## Laminate

Coalesse's graded laminate program includes our standard laminates, Steelcase High-Pressure Laminates, and standard High-Pressure Laminates from Nevamar, Wilsonart, Formica, and Pionite.

### Grade 1

Coalesse High-Pressure Laminates are priced as Grade 1.

High-Pressure Laminates listed below are not available on all products, check laminate matrix for availability.

2730	Arctic White
2746	Black
2826	White Nebula
2829	Poppyseed
2830	Charcoal
2884	Milk
2886	Maple
2887	Amber Cherry
2890	Folkstone BMV
2891	Ingot
2892	Ash
2894	Natural Cork
2895	Natural Walnut
2896	Dark Cork
2897	Desert Oak
2898	Satin Stainless

Steelcase High-Pressure Laminate (Grade 1) All Steelcase High-Pressure Laminates may be specified on Coalesse products with exception (must be ordered as Special): Await tables, Enea tables, Enea Lottus tables, and Sidewalk tables. The use of Steelcase High-Pressure Laminate may be subject to extended lead times.

### Standard Laminates

Any current color within the following High-Pressure Laminate groups may be specified in grade 1 or 2 as indicated — subject to availability. **Contact Customer Service at 1.800.627.6770 to verify that your laminate selection falls within the categories noted below.**

Directional patterns and wood-grains may be used on free-standing systems products, but will not be patterned matched.

Some standard High-Pressure Laminates, may not be available in the appropriate size to produce large products.

Nevamar (Grade 2)  
Solids (textured finish)  
Patterns (textured finish)

Wilsonart (Grade 1)  
Standards (matte finish)

Exceptions: High definition which must be quoted as a special. Marker board which is grade 2.

Formica (Grade 2)  
Color portfolio (matte finish)  
Patterns (matte finish)  
Formations (matte finish)

Pionite (Grade 2)  
Decorative surfaces (suede finish)

### Non-Standard Laminates

Coalesse can supply additional laminates for an upcharge. Contact your Coalesse sales consultant for a custom quotation. Custom upcharges will vary based upon the cost of the material specified and additional labor required to manufacture the products. Some non-standard laminates will not be available in the appropriate size to produce large Coalesse products. A sample of the laminate may be requested for approval. Some non-standard laminates may be subject to extended lead times.

Coalesse does not use the following types of laminate materials on Detour and TeamWork:

- Formica solid surfacing – Surell Solids, Surell Granites
- Nevamar – Fountainhead
- Dupont – Corian
- Metal Laminates – textured, brushed or polished



# High-Pressure Laminate Matrix

## Legend

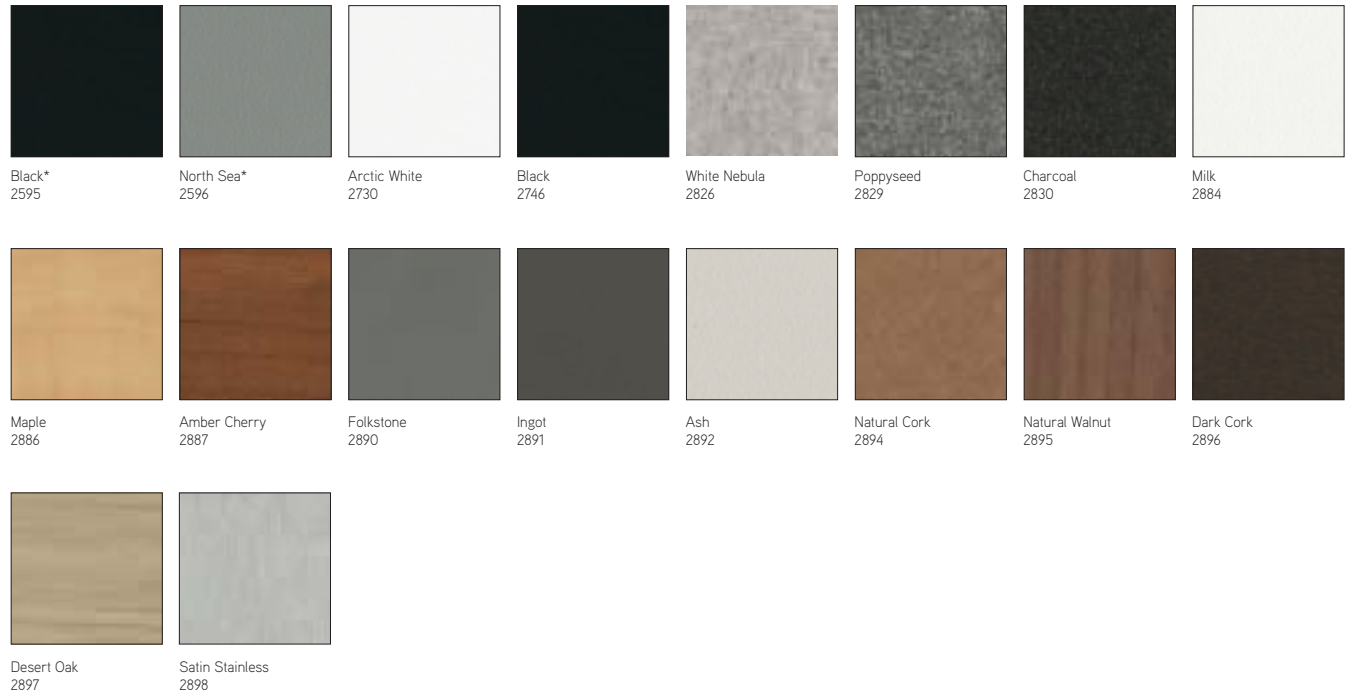
- = Not available
- = Available
- ▶ See specification pages for details.

	2595 Black	2596 North Sea	2730 Arctic White	2746 Black	2826 White Nebula	2829 Poppyseed	2830 Charcoal	2884 Milk	2886 Maple	2887 Amber cherry	2890 Folkstone	2891 Ingot	2892 Ash	2894 Natural Cork	2895 Natural Walnut	2896 Dark Cork	2897 Desert Oak	2898 Satin Stainless
<b>Seating</b>																		
Archipelago	•	•	■	■	•	•	•	■	•	•	■	■	■	•	•	•	•	•
Await	■	■	■	•	•	•	•	•	•	•	•	•	•	•	•	•	•	•
Bix Podium Drawer Front	•	•	■	■	■	■	■	■	■	■	■	■	■	■	■	■	■	■
Coupe	•	•	■	■	•	•	•	■	•	•	■	■	■	•	•	•	•	•
Detour	•	•	■	■	•	•	•	■	•	•	■	■	■	•	•	•	•	•
Swathmore Grande	•	•	■	■	•	•	•	■	•	•	■	■	■	•	•	•	•	•
<b>Occasional Tables</b>																		
Await	■	■	■	•	•	•	•	•	•	•	•	•	•	•	•	•	•	•
Bix Tables	•	•	■	■	■	■	■	■	■	■	■	■	■	■	■	■	■	■
CG_1	•	•	■	■	■	■	■	■	■	■	■	■	■	■	■	■	■	■
Enea	•	•	■	■	■	■	■	■	■	■	■	■	■	■	■	■	■	■
Enea Lottus	•	•	■	■	■	■	■	■	■	■	■	■	■	■	■	■	■	■
Lagunitas	•	•	■	■	■	■	■	■	■	■	■	■	■	■	■	■	■	■
Sidewalk	•	•	■	■	■	■	■	■	■	■	■	■	■	■	■	■	■	■
SW_1	•	•	■	■	■	■	■	■	■	■	■	■	■	■	■	■	■	■
Swathmore	•	•	■	■	•	•	•	■	•	•	■	■	■	•	•	•	•	•
Swathmore Grande	•	•	■	■	•	•	•	■	•	•	■	■	■	•	•	•	•	•
TeamWork	•	•	■	■	■	■	■	■	■	■	■	■	■	■	■	■	■	■
<b>Tables and Casegoods</b>																		
Akira	•	•	■	■	■	■	■	■	■	■	■	■	■	■	■	■	■	■
Au Lait	•	•	■	■	■	■	■	■	■	■	■	■	■	■	■	■	■	■
Ballet	•	•	■	■	■	■	■	■	■	■	■	■	■	■	■	■	■	■
Derby	•	•	■	■	■	■	■	■	■	■	■	■	■	■	■	■	■	■
Detour	•	•	■	■	■	■	■	■	■	■	■	■	■	■	■	■	■	■
E-Table 2	•	•	■	■	■	■	■	■	■	■	■	■	■	■	■	■	■	■
Enea	•	•	■	■	■	■	■	■	■	■	■	■	■	■	■	■	■	■
Enea Lottus	•	•	■	■	■	■	■	■	■	■	■	■	■	■	■	■	■	■
Ginkgo Biloba	•	•	■	■	■	■	■	■	■	■	■	■	■	■	■	■	■	■
Host Collection	•	•	■	■	■	■	■	■	■	■	■	■	■	■	■	■	■	■
Reunion Collection	•	•	■	■	■	■	■	■	■	■	■	■	■	■	■	■	■	■
Rizzi Arc	•	•	■	■	■	■	■	■	■	■	■	■	■	■	■	■	■	■
Runner	•	•	■	■	■	■	■	■	■	■	■	■	■	■	■	■	■	■
SW_1	•	•	■	■	■	■	■	■	■	■	■	■	■	■	■	■	■	■
TeamWork	•	•	■	■	■	■	■	■	■	■	■	■	■	■	■	■	■	■
Train	•	•	■	■	■	■	■	■	■	■	■	■	■	■	■	■	■	■

# High-Pressure Laminate Palette

► See High-Pressure Laminate Matrix for availability by product list, page 33.

## Standard High-Pressure Laminate



\*Available on Await only.

# High-Pressure Laminate Palette

• = Not available  
 ■ = Available  
 ▶ See specification pages for details.

[illegible]

Await Table 3 mm Edge	■	•	•	•	•	•	•	•	•	•	•	■	•	•	•	•	•	•	•	•	•	•	•	•	•	•	•	■		
Bix Edge	■	■	•	•	•	•	•	•	•	•	■	•	•	■	■	•	•	•	•	•	•	•	•	■	■	■	■	■	•	
Enea T-Mold Edge	■	•	•	•	•	•	•	•	•	■	•	■	•	•	•	•	•	•	•	•	•	•	•	•	•	•	•	•	•	
Enea Lottus	■	•	•	•	•	•	•	•	•	•	•	•	•	•	•	•	•	•	•	•	•	•	•	•	•	•	•	•	•	
TeamWork Self Edge (Satellite table, carts)	■	•	■	■	•	•	•	•	•	•	■	■	■	■	■	■	■	■	■	■	■	■	•	•	•	•	•	•	•	

[illegible]

## Surface Materials-Laminate

# Surface Materials - Glass

## Glass

Not all glass selections are available on every product. Refer to glass matrix for availability by product.

CG	Clear Green
CGF	Clear Green Laminated/Frosted Appearance
AC	Absolute Clear
ACF	Absolute Clear Frosted
ACM	Absolute Clear with Moonlight
ACS	Absolute Clear with Sage
ACP	Absolute Clear with Poppy
ACG	Absolute Clear with Goldenrod
ACB	Absolute Clear with Black
ACC	Absolute Clear with Crystal Spring

Exclusive to Carl Hansen products:  
6513 Clear Glass

Exclusive to Emu products:  
6547 Transparent  
6548 Smoke Grey

## Glass Matrix

## Legend

- = Not available
- = Available
- ▶ See specification pages for details.

	AC Absolute Clear	ACF Absolute Clear Frosted	CG Clear Green	CGF Clear Green Laminated/Frosted Appearance	ACM Absolute Clear with Moonlight	ACS Absolute Clear with Sage	ACC Absolute Clear with Crystal Spring	ACG Absolute Clear with Goldenrod	ACP Absolute Clear with Poppy	ACB Absolute Clear with Black	Emu Exclusive Transparent	Emu Exclusive Smoke	Carl Hansen Exclusive Glass	Standard Clear Glass / Green Tinted / White Enamel Bottom	Green Tinted
<b>Occasional Tables</b>															
Await***	■	■	■	■	■	■	■	■	■	■	•	•	•	•	•
Bob	■	■	■	■	■	■	■	■	■	■	•	•	•	•	•
Booth**	•	•	•	•	•	•	•	•	•	•	•	•	•	■	•
Calm**	•	•	•	•	•	•	•	•	•	•	•	•	•	■	•
CG_1	•	•	•	•	■	■	■	■	■	■	•	•	•	•	•
CH100	•	•	•	•	•	•	•	•	•	•	•	•	■	•	•
Circa	•	•	•	•	•	•	•	•	•	•	•	•	•	■	•
Diekman	■	•	•	•	•	•	•	•	•	•	•	•	•	•	•
Ginger**	•	•	•	•	•	•	•	•	•	•	•	•	•	■	•
Heaven	•	•	•	•	•	•	•	•	•	•	■	■	•	•	•
Holy Day	■	■	■	■	■	■	■	■	■	■	•	•	•	•	•
Millbrae	■	■	■	■	■	■	■	■	■	■	•	•	•	•	•
Sidewalk*	•	•	•	■	•	•	•	•	•	•	•	•	•	•	•
Soft Leaf	■	•	•	•	•	•	•	•	•	•	•	•	•	•	•
SW_1***	•	•	•	•	■	■	■	■	■	■	•	•	•	•	•
Swathmore**	•	•	•	■	•	•	•	•	•	•	•	•	•	•	•
Switch	•	•	•	•	•	•	•	•	•	•	•	•	•	•	■
<b>Conference Tables/Office/Storage</b>															
Denizen	•	•	•	•	■	•	•	•	•	•	•	•	•	•	•
Exponents (Credenzas)***	•	•	•	•	■	■	■	■	■	■	•	•	•	•	•
SW_1***	•	•	•	•	■	■	■	■	■	■	•	•	•	•	•

\*3/16" thick glass  
 \*\*3/4" thick glass  
 \*\*\*1/2" thick glass

# Glass Palette

► See Glass Matrix for availability by product list, page 39.

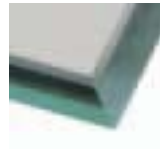
## Glass



Absolute Clear  
AC



Absolute Clear Frosted  
ACF



Clear Green  
CG



Clear Green Laminated -  
Frosted Appearance CGF



Moonlight  
ACM



Goldenrod  
ACG



Sage  
ACS



Black  
ACB



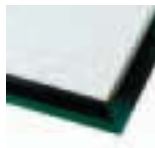
Poppy  
ACP



Crystal Spring  
ACC



Green Tinted- White  
Enamel Bottom



Green Tinted

## Exponents and SW\_1 Glass



Moonlight  
ACM



Sage  
ACS



Crystal Spring  
ACC



Goldenrod  
ACG



Poppy  
ACP



Black  
ACB



# Surface Materials- Metal/Paint

## Metal/Paint

Coalesse powder coats all painted metal components for an exceptionally durable, environmentally responsible finish — eliminating VOC's (volatile organic compounds) from being released into the environment. Electrostatically charged powder coat material is applied to an exacting thickness and then temperature baked, resulting in a smooth, flawless finish that is abrasion and impact resistant. The following Coalesse metal finishes are available:

### Powder Coat paint

4138	Graphite Gloss
4140	Arctic White Gloss
4141	Platinum Matte
4142	Platinum Gloss
4144	Black Gloss (formerly anthracite gloss)
4145	Milk Gloss
4146	Champagne Matte
4147	Champagne Gloss
4148	Midnight Brown Gloss
7196	Midnight Brown Textured
7197	Anthracite Textured

### Exclusive to Emu Advanced Collection\*:

4251	Indian Brown
4254	White
4256	Aluminum
4257	Antique iron
7234	Textured Matte Black
7271	Textured Matte White
7272	Textured Matte Blue
7273	Textured Matte Green
7274	Textured Matte Red

\* Not all colors available on all products, consult Emu advanced paint matrix.

### Enea paint colors:

4016	White Gloss
4017	Black Gloss
4018	Silver Metallic

### Enea Lottus Paint colors:

4016	White Gloss
4017	Black Gloss
4216	Red
4217	Brown
4218	Platinum Silver
<i>Tip: 4216 Red not available on Enea Lottus tables.</i>	

### Anodized Aluminum

(Available on rod or disc pulls only)

5200	Satin Aluminum
------	----------------

## Paint

### Applies to: Denizen Collection

4138	Graphite Gloss
4142	Platinum Gloss
4144	Black Gloss
4145	Milk Gloss
4147	Champagne Gloss
9238	Brushed Nickel

### Applies to: Exponents (Base, Accent Ribbon, Handle, and Grommet)

4135	Black Matte
4141	Platinum Matte

### Applies to: Exponents mobile displays (Base, Handle, and Inner Frame)

4135	Black Matte
4145	Milk Gloss

## Base Finish

### Polished Aluminum

8046	Polished Aluminum
------	-------------------

### Chrome

9201	Chrome
9207	Polished trivalent chrome
9208	Etched trivalent chrome

### Applies to: Bob and SW\_1

8040	Aluminum Matte Polished
------	-------------------------

### Exclusive Carl Hansen

4860	Black Powder Coat*
4861	Chrome*
4682	Stainless Steel

\* Only available on CH468

# Metal/Paints Matrix

## Legend

- = Not available
- = Available
- See specification pages for details.

## Seating

	4135 Black Matte	4138 Graphite Gloss	4140 Arctic White Gloss	4141 Platinum Matte	4142 Platinum Gloss	4144 Black Gloss	4145 Milk Gloss	4146 Champagne Matte	4147 Champagne Gloss	4148 Midnight Brown Gloss	4180 Graphite Matte	4193 Midnight Brown Matte	4242 Milk Matte	4710 Black Matte	7196 Midnight Brown Textured	7197 Anthracite Textured	Enea Exclusive Finishes	Hand Polished High Gloss Blue	Hand Polished High Gloss Yellow
Archipelago	•	■	■	■	■	■	■	■	■	■	•	•	•	•	■	■	•	•	•
Bindu Side	•	•	•	•	•	■	•	•	•	•	•	•	•	•	•	•	•	•	•
Bix	•	■	■	■	■	■	■	■	■	■	•	•	•	•	■	■	•	•	•
Chord	•	•	•	•	•	■	•	•	•	•	•	•	•	•	•	•	•	•	•
Circa	•	■	■	•	■	■	•	•	•	■	•	•	•	•	•	•	•	•	•
Coupe	•	■	■	•	■	■	•	•	•	•	•	•	•	•	•	•	•	•	•
Detour	•	■	■	■	■	■	■	■	■	■	•	•	•	•	■	■	•	•	•
Enea	•	•	•	•	•	•	•	•	•	•	•	•	•	•	•	•	■	•	•
Enea Lottus	•	•	•	•	•	•	•	•	•	•	•	•	•	•	•	•	■	•	•
Evaneau	•	•	•	•	•	■	•	•	•	•	•	•	•	•	•	•	•	•	•
Kart	•	■	■	■	■	■	■	■	■	■	•	•	•	•	■	■	•	•	•
Lagunitas	•	■	■	■	■	■	■	■	■	■	■	■	■	■	■	■	•	•	•
Massaud	•	•	•	■	•	•	•	■	•	•	■	■	■	■	•	•	•	•	•
Millbrae	•	■	•	■	•	■	■	•	•	■	■	■	■	■	•	•	•	•	•
Topo Lounge	•	■	■	■	■	■	■	■	■	■	•	•	•	•	■	■	•	•	•
Visalia	•	■	•	■	•	■	■	•	•	■	■	■	■	■	•	•	•	•	•
X-stack	•	•	•	•	■	■	•	•	•	•	•	•	•	•	•	•	•	•	•

## Occasional Tables

Bix (vinyl version)	•	■	■	■	■	■	■	■	■	■	•	•	•	•	■	■	•	•	•
Calm	•	■	■	•	■	■	•	•	•	•	•	•	•	•	•	•	•	•	•
Circa	•	■	■	•	■	■	•	•	•	■	•	•	•	•	•	•	•	•	•
Enea	•	•	•	•	•	•	•	•	•	•	•	•	•	•	•	•	■	•	•
Lagunitas	■	■	■	■	■	■	■	■	■	■	■	■	■	■	■	■	•	•	•
TeamWork	•	■	■	■	■	■	■	■	■	■	•	•	•	•	■	■	•	•	•
Trees	•	•	•	•	•	•	•	•	•	•	•	•	•	•	•	•	•	■	■

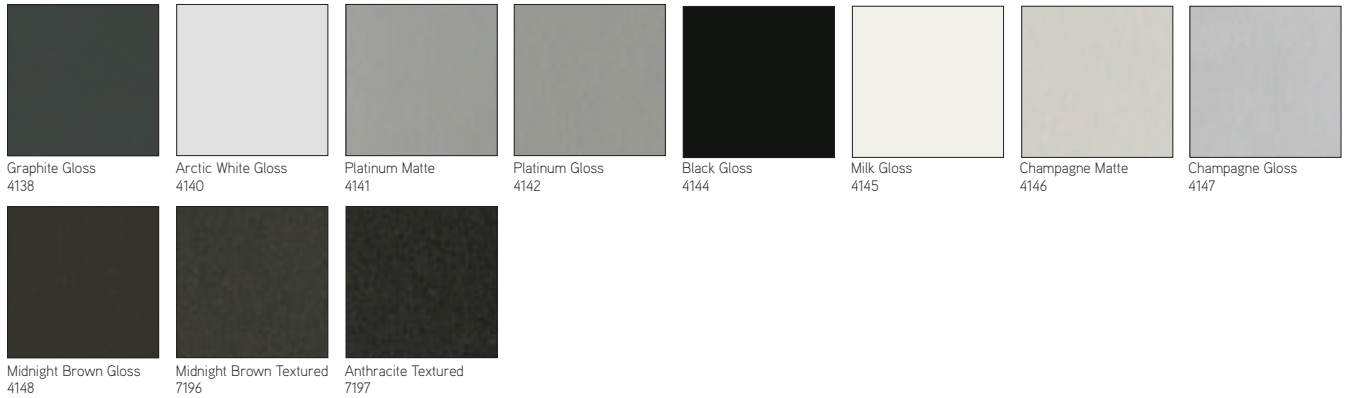
## Tables and Casegoods

Akira	•	■	■	■	■	■	■	■	■	■	•	•	•	•	■	■	•	•	•
Au Lait	•	•	•	•	•	•	•	•	•	•	•	•	•	•	■	■	•	•	•
Ballet	•	■	■	■	■	■	■	■	■	■	•	•	•	•	■	■	•	•	•
Bix	•	•	•	•	•	•	•	•	•	•	•	•	•	•	■	■	•	•	•
CG_1	•	•	•	■	•	•	•	•	•	■	■	■	■	•	•	•	•	•	•
Denizen	•	■	•	•	■	■	■	•	■	•	•	•	•	•	•	•	•	•	•
Detour	•	■	■	■	■	■	■	■	■	■	•	•	•	•	■	■	•	•	•
Derby	•	■	■	■	■	■	■	■	■	■	•	•	•	•	■	■	•	•	•
E-Table 2	•	■	■	■	■	■	■	■	■	■	•	•	•	•	■	■	•	•	•
Enea	•	•	•	•	•	•	•	•	•	•	•	•	•	•	•	•	■	•	•
Enea Lottus	•	•	•	•	•	•	•	•	•	•	•	•	•	•	•	•	■	•	•
Exponents	■	•	•	■	•	•	•	•	•	•	•	•	•	•	•	•	•	•	•
Exponents Mobile Display	■	•	•	•	•	•	■	•	•	•	•	•	•	•	•	•	•	•	•
Ginkgo Biloba	•	■	■	■	■	■	■	■	■	■	•	•	•	•	■	■	•	•	•
Millbrae	•	■	•	■	•	■	■	•	•	■	•	■	■	■	•	•	•	•	•
Reunion Collection	•	■	■	■	■	■	■	■	■	■	•	•	•	•	■	■	•	•	•
Rizzi Arc	•	■	■	■	■	■	■	■	■	■	•	•	•	•	■	■	•	•	•
Runner	•	■	■	■	■	■	■	■	■	■	•	•	•	•	■	■	•	•	•
TeamWork	•	■	■	■	■	■	■	■	■	■	•	•	•	•	■	■	•	•	•
Train	•	■	■	■	■	■	■	■	■	■	•	•	•	•	■	■	•	•	•

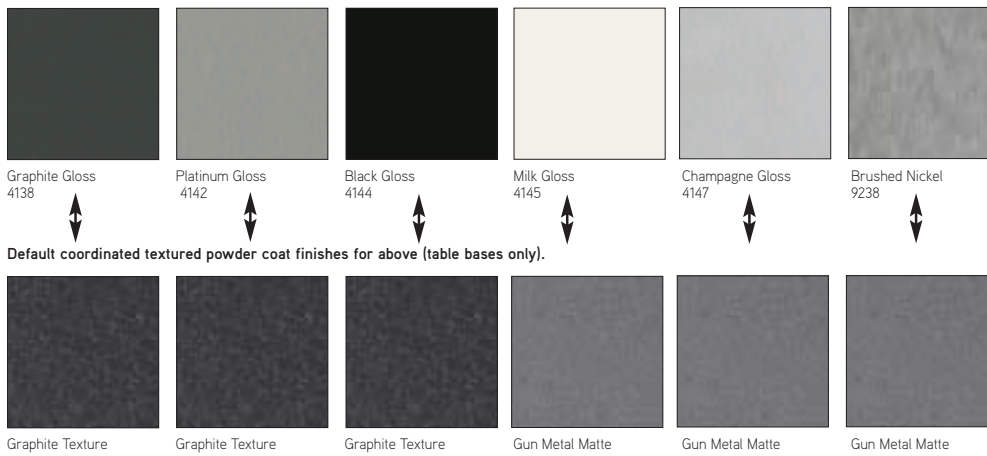
# Metal/Paints Palette

► See Metal/Paints Matrix for availability by product list, page 42.

## Metal/Paint Colors



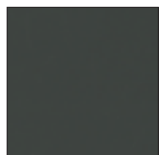
## Denizen Paint Colors - Standard specifiable powder coat options



# Metal/Paints Palette *continued*

► See Metal/Paints Matrix for availability by product list, page 42.

## Visalia Paint Colors



Graphite Gloss  
4138



Platinum Matte  
4141



Black Gloss  
4144



Milk Gloss  
4145



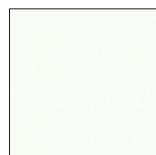
Midnight Brown Gloss  
4148



Graphite Matte  
4180



Midnight Brown Matte  
4193



Milk Matte  
4242



Black Matte  
4710

## Carl Hansen Exclusive



Black Powder Coat  
4860



Chrome  
4861



Stainless Steel  
4862

# Emu Advanced Collection Paint Matrix

## Legend

- = Not available
- = Available
- See specification pages for details.

	Heaven Chairs	Heaven Tables and Pouf	Heaven Vases	Ivy Chair, Sofa, Pouf, and Side Tables	Ivy Dining and Square Tables	Pattern Chairs, Bench, and Tables	Retrouvé Chairs and Pouf	Retrouvé Vase Insert and Vase Frames	Round Chairs and Stool	Round Tables
4251 Indian Brown	•	•	•	•	•	•	•	•	■	■
4254 White	■	■	■	■	■	•	■	■	■	■
4256 Aluminum	■	■	•	•	•	•	•	•	•	•
4257 Antique Iron	•	•	•	•	•	•	•	•	■	■
7234 Textured Matte Black	•	•	•	•	•	■	•	•	■	■
7271 Textured Matte White	•	•	•	•	•	■	•	•	•	•
7272 Textured Matte Blue	•	•	•	•	•	■	•	•	•	•
7273 Textured Matte Green	•	•	•	•	•	■	•	•	•	•
7274 Textured Matte Red	•	•	•	•	•	■	•	•	•	•

*Tip: Contact Customer Service to use one of the listed paints on a product that the paint is not standard on. A 10% upcharge will be applied and there will be an extended lead time.*

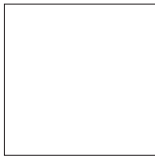
# Emu Paint Palette

► See Emu Advanced Collection Paint Matrix for availability by product list, page 45.

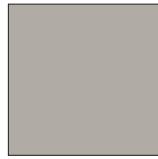
## Emu Collection



Indian Brown  
4251



White  
4254



Aluminum  
4256



Antique Iron  
4257



Textured Matte Black  
7234



Textured Matte White  
7271



Textured Matte Blue  
7272



Textured Matte Green  
7273



Textured Matte Red  
7274

# Surface Materials - Miscellaneous

## Edge

Applies to:

- TeamWork\*\* and Detour\*

E010	Ash
E020	Black
E030	Folkstone
E040	Graystone
E050	Greige
E060	Ingot
E070	Stonedust
E080	Taupe
E090	White
E100	Dark Gray

\* Black and Dark Gray are the only color options for Detour

\*\* Black is the only color available for Teamwork

Applies to:

• Bix	
6000	Black
6009	Arctic White
6011	Ash
6012	Ingot
6086	Folkstone
6125	Graystone
6126	Greige
6127	Stonedust
6128	Taupe
6130	Dark Gray

## Convex Vinyl Edge Band

Applies to:

- Au Lait (includes cast urethane), Derby, E-Table, Ginkgo Biloba, Rizzi Arc ribbed, Runner vinyl

6000	Black
6607	Woodrose
6609	Smoke
6655	Warm White

## Flat Vinyl Edge

Applies to:

• Akira	
6000	Black
6086	Folkstone
6090	Amber Cherry
6091	Fusion Maple
6092	Starlight
6093	Dove Grey

## Cast Urethane Edge

Applies to:

• Au Lait	
6000	Black
6607	Woodrose
6609	Smoke
6655	Warm White

## Plastic

Applies to:

• Enea Shell	
003	White
400	Black
401	Powder Blue
403	Melon
404	Pumpkin
405	Periwinkle
406	Alabaster
409	Red
421	Blue

Applies to:

• Enea Lottus Shell and Insert	
003	White
013	Sunset Orange
014	Clover Green
015	Sand
016	Walnut Brown
017	Cool Grey
400	Black Grey
409	Red Grey
414	Anthracite Grey
421	Blue

Applies to:

- Exponents mobile cart, moby, and mobile display casters

6000	Black
6009	Arctic White

Applies to:

• Kart Shell	
6052	Milk
6248	Midnight Brown
6400	Black
6427	Grey

*Tip: Kart stack and Kart Café are not available in Grey 6427.*

Applies to:

• Lox chairs	
6345	Black
6346	White

Applies to:

• Lox stools	
6347	Black Gloss
6348	White Gloss

Applies to:

• Rocky Shell	
6315	Graphite
6316	White

Applies to:

• SW_1 tablets, grommet, barrier, wire manager, sub-structure, lounge tablet, Sebastopol grommet	
6000	Black
6052	Milk

Applies to:

- Grommet, spheres, flex-gangers, Mini-Port, Interport, casters, horizontal wire manager, and vertical wire manager

Black plastic

## TAP Door Finishes

### Brushed Anodized Aluminum

Applies to:

• Host	
8044	Black
8047	Silver

## Utility Bay

Applies to:

• E-Table 2	
4137	Matte Black
4745	Nickel Mica
4746	Silver Mica
4747	Charcoal Mica

## Glass Doors

Applies to:

- Host credenzas

Frosted glass

## Door Hardware

Applies to:

• Exponents Version 1	
9152	Satin Nickel
9201	Polished Chrome

## Locks

Applies to:

- Denizen, Detour, Exponents, and TeamWork

9211	Nickel
9250	Ember Chrome

## Interior and Plinth

Applies to:

- Exponents

Black Melamine

## Papercord Seating

Applies to:

• Carl Hansen & Son	
P500	Black
P501	Natural
P502	White*

\* White papercord is available on CH24 Wishbone chair only.

## Solid

Applies to:

• Denizen Bento Box	
2976	White Solid

Applies to:

• Denizen, Exponents and SW_1 Tables	
2801	Glacier White

Applies to:

• CG_1	
2010	Black
2011	Midnight Black
2012	Blue
2013	Red
2801	Glacier White

## Grommet

Applies to:

• Exponents	
4135	Black Matte
4141	Platinum Black

## Power, Voice Data Modules

Applies to:

• Exponents	
4140	Arctic White Gloss
4141	Black Gloss

## Soft Surface Worksurface

Applies to:

• Free Stand	
4433	Black

## TPU Colors

Applies to:

• X-Stack	
6328	Cloud
6329	Shadow
6330	Sea
6331	Surf

## Glossy Laminate

Applies to:

• Sebastopol	
2001	Smoky White Glossy
2002	Studio Gray Glossy
2003	Wrought Iron Glossy
2004	Black Pearl Glossy
2005	Liberty Red Glossy

# Edges Palette

---

## PVC Edges – Akira



6000 Black



6086 Folkstone



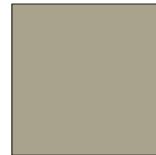
6090 Amber Cherry



6091 Fusion Maple



6092 Starlight



6093 Dove Grey

---

## E-Table Utility Bay



4137 Matte Black



4745 Nickel Mica



4746 Silver Mica



4747 Charcoal Mica

---

## Interport and Miniport



Matte Black

---

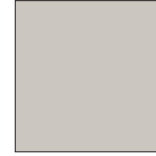
## 1¼" Au Lait Cast Urethane, Au Lait, Rizzi Arc, Runner, and Convex Vinyl Edge



6000 Black



6655 Warm White



6607 Woodrose

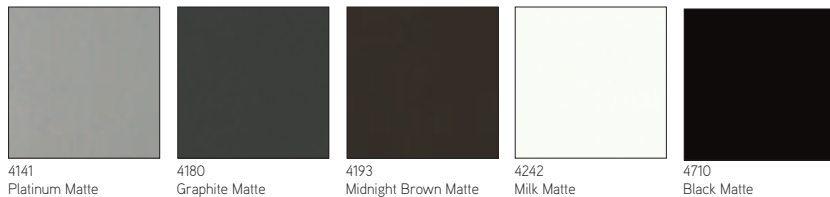


6609 Smoke



# Plastic and Miscellaneous Palette

## CG\_1 - Matte Paint colors for frame/leg



4141  
Platinum Matte

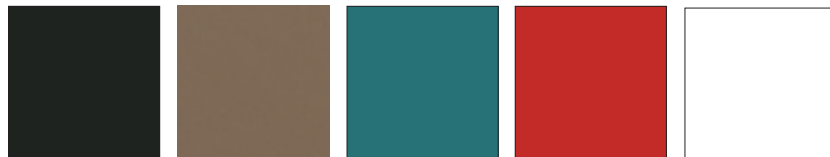
4180  
Graphite Matte

4193  
Midnight Brown Matte

4242  
Milk Matte

4710  
Black Matte

## CG\_1 - Solid Surface colors for the leg insert



Black  
2010

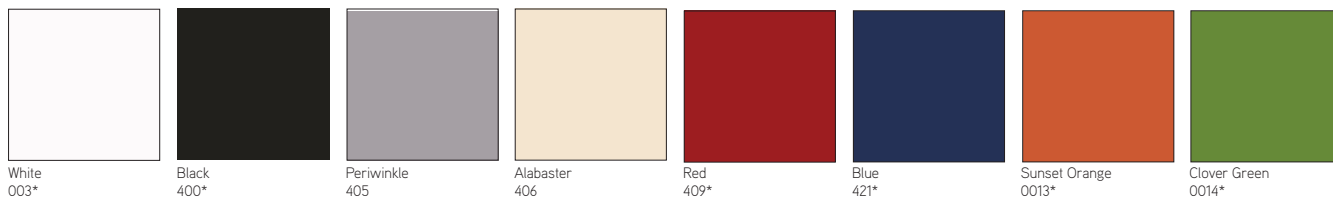
Midnight Brown  
2011

Blue  
2012

Red  
2013

Glacier White  
2801

## Enea Plastic (Note: see next page for Enea Lottus Finish Selection)



White  
003\*

Black  
400\*

Periwinkle  
405

Alabaster  
406

Red  
409\*

Blue  
421\*

Sunset Orange  
0013\*

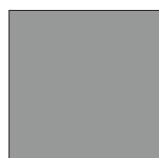
Clover Green  
0014\*



Sand  
0015\*



Walnut Brown  
0016\*



Cool Grey  
0017\*



Anthracite Grey  
0414\*

\*Available on both Enea and Enea Lottus.

## Enea Paint (Note: see next page for Enea Lottus Finish Selection)



White  
4016\*

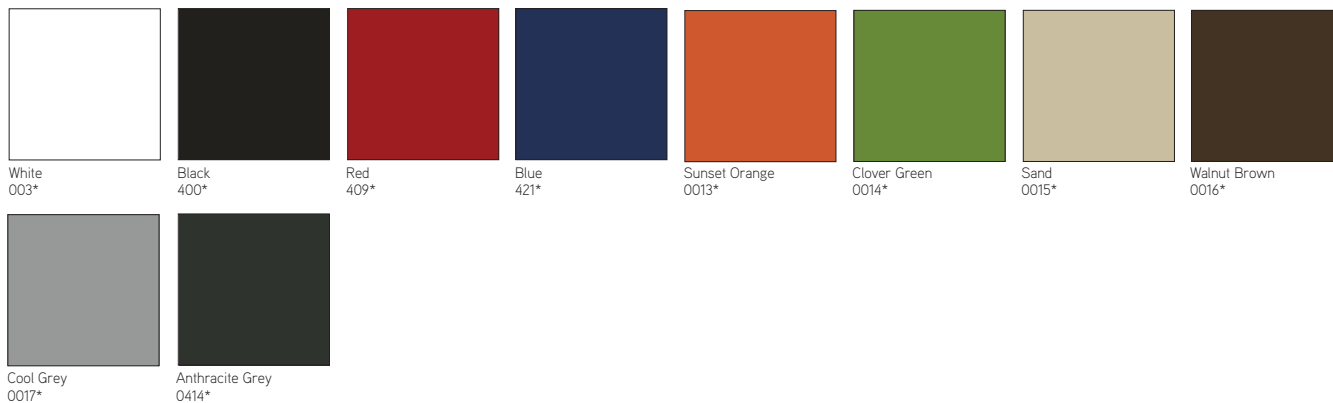
Black Gloss  
4017\*

Silver Metallic  
4018

\*Available on both Enea and Enea Lottus.

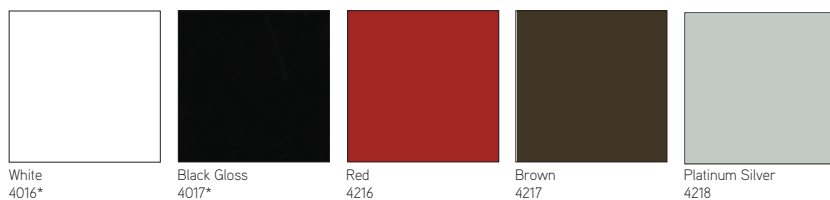
# Plastic and Miscellaneous Palette *continued*

## Enea Lottus Plastic (Note: see previous page for Enea Finish Selection)



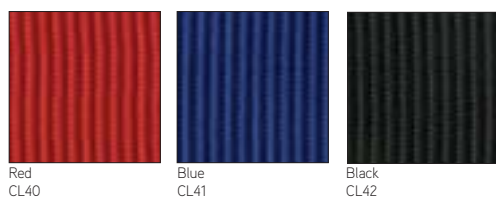
\*Available on both Enea and Enea Lottus.

## Enea Lottus Paint (Note: see previous page for Enea Finish Selection)

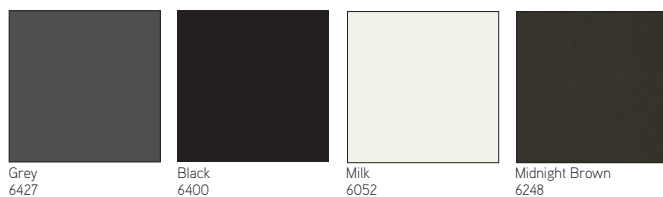


\*Available on both Enea and Enea Lottus.  
 Tip: 4216 not available on Enea Lottus tables.

## Hosu – Ottoman Pull Tab

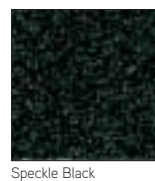


## Kart – Plastic colors for seat and back



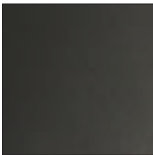
Tip: Kart stacking chairs and cafe stools are not available in Grey 6427.

## Kart Tablet Arm – Phenolic Resin Color

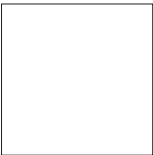


# Plastic and Miscellaneous Palette

## Lox Chair Plastic



Black  
6345

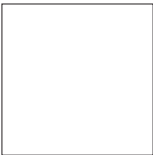


White  
6346

## Lox Stool Plastic

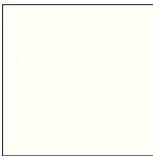


Black Gloss  
6347

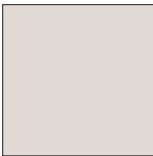


White Gloss  
6348

## Sebastopol - Glossy laminate colors for interior surface



Smoky White Glossy  
2001



Studio Gray Glossy  
2002



Wrought Iron Glossy  
2003



Black Pearl Glossy  
2004

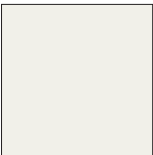


Liberty Red Glossy  
2005

## SW\_1 Tablet, Grommet, Barrier, Wire Manager, Sub-structure and Sebastopol Grommet



Black  
6000

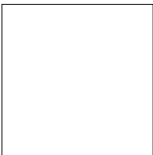


Milk  
6052

## Rocky - Polypropylene colors for seat and back



Graphite  
6315



White  
6316

## Papercord



Natural  
P501



Black  
P500

## X-Stack TPU



Cloud  
6328



Shadow  
6329



Sea  
6330



Surf  
6331

## Denizen, Exponents, and SW\_1 Exclusives

---

### Denizen Veneer Exclusive



Quarter Cut Grey Ash  
V2AA



Quarter Cut Teak  
V2AT

Note: Denizen wood veneer palette also includes the following: Maple Quarter Cut - Low Sheen, Cherry Quarter Cut - Low Sheen, Oak Rift Cut - Low Sheen, Walnut Quarter Cut - Low Sheen.

---

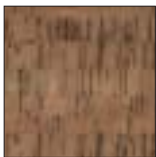
### Denizen Bento Box



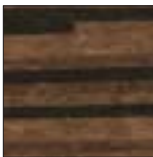
White Solid  
2976

---

### Denizen Cork (corkboard) Exclusive



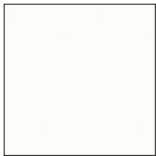
COR1 Natural



COR2 Dark Patterned

---

### Denizen, Exponents and SW\_1 Solid Exclusive



Glacier White Corian  
2801

## Denizen, Exponents, and SW\_1 Exclusives

# Care and Maintenance

## Chrome

Use commercial cleanser and polish, according to manufacturer's directions.

## Fabric

Under normal use, clean with soft cloth dampened with water. For spots and spills, we recommend professional cleaning. For COM, refer to the specific cleaning instructions recommended by the fabric supplier.

## Emu Outdoor Fabric:

Remove loose dirt with soft bristle brush or hose down with cold water. Clean with mixture of water and mild soap. Rub in mixture with soft brush and allow to thoroughly soak into fabric. Rinse thoroughly with cold water and air dry. Never use water over 100 degrees Fahrenheit. Do not machine dry. For light cleaning, avoid using detergents.

For stubborn stains use mixture of one gallon cold water, ½ cup bleach and ¼ cup mild soap for one hour.

Detergents can be used without harm, though they may remove some of the water and stain resistant properties in the fabric.

3D Knit Mesh (SW\_1) Seating: Clean with warm water and soap. Wet sponge and wipe fabric. Household cleaners such as Windex™ may be used. Do NOT use cleaners containing bleach.

**Laminate and solid phenolic** should be cleaned with soap and water. For stubborn stains, use a non-abrasive household cleaner.

**SW\_1 Tablet** surfaces clean with soft cloth dampened with water and soap, if needed. The use of general purpose cleaners are acceptable but must be void of citric content that has z-butoxyethanol in the formulation listing.

## Cleaning Laminate

### Markerboard Surface

Use dry erase markers only. Remove dry-erase markings with a markerboard eraser or soft cloth as often as possible. Change erasers, as they become dirty. Dirty erasers will leave ink residue on the surface.

For daily cleaning, or as needed, use a dry erase cleaner, or a non-abrasive household cleaner, such as glass cleaner. This may be done with a soft cloth or sponge. Dry the surface with a soft cloth prior to writing. All markings should be removed weekly.

### Caution:

- Do not use permanent markers on markerboard surfaces. In the event a permanent marker is used, removal of markings may be attempted by using dry erase cleaner, or by writing over the marking with a dry erase marker and erasing with a markerboard eraser or soft cloth.
- Do not use abrasive cleaners or solvent type cleaning solutions, such as Ketones (Acetone, MEK, etc.) lacquer thinner, nail polish remover, etc. because they may remove the finish from the markerboard surface.

## Cleaning e<sup>3</sup> ceramicsteel Markerboard Surface

- Wipe board with a clean cloth moistened by a liquid markerboard cleaner or a solution of 50% water and 50% isopropyl alcohol.
- Rinse with clear water.
- Wipe dry with a clean cloth. If your board is used daily, the cleaning should be performed at least 2-3 times a week.

More thorough cleaning may be required if writing is left on the board for more than two days.

## Markers

Use any high-quality dry erase marker.

**CAUTION!** The use of Low Odor markers may cause ghosting to occur. If Low Odor markers have been used, the surface can be completely cleaned by following the cleaning instructions above. Remember to discard eraser if used with Low Odor markers.

## Removing Permanent Marker

### Option 1:

- Write over the top of the permanent marker ink with a dry-erase marker
- Simply erase

### Option 2:

- Moisten a clean, dry cloth with isopropyl alcohol
- Wipe the board in a circular motion to loosen marker residue
- Rinse with clear water
- Dry the board with a clean cloth
- Repeat these steps as necessary

## Installer's Instructions for Initial Cleaning at Time of Installation

**NOTE:** These initial cleaning instructions are shipped with every board.

- For initial cleaning, wipe your board with a clean cloth moistened by a mild, alcohol-based cleaner.
- Rinse with clear water. This step is simple, but very important.
- Wipe dry with a clean cloth.

## Leather

Under normal use, regular dusting and vacuum cleaning are all that is necessary. For spots and spills, wipe excess liquid immediately. If necessary, use lukewarm water cleaning the entire area where spot occurred and air dry. For stubborn spots or stains, use a solution of mild non-detergent soap and air dry. For butter, oil, or grease, wipe excess with dry cloth and then leave alone. The spot will dissipate into the leather. Do not apply water.

## Faux Leather

Under normal use, clean with soft cloth dampened with water. For spots and stains, use the recommended mixture of Woolite and water. Rinse with clean water and air dry.

## Granite/Glass

Under normal use, clean with Windex and soft cotton cloth.

**Powder coat finishes on chairs and table bases** should be cleaned with a liquid detergent and water. Remove stubborn stains with liquid cleanser, such as Formula 409.

## Emu Outdoor Paint:

Store in an enclosed and dry area during winter to avoid condensation. Before winter and regularly every quarter, clean the metal surfaces with a cloth dipped in water or detergent and protect them with vasoline oil or car polish. Do not use ethyl alcohol or detergents that contain even in small quantities acetone, trichloroethylene, or ammonia (or solvents in general). When storing tables, do not stack them or put the table tops in direct contact with each other. Handle the seats with care when stacking them to avoid damaging the varnished surfaces.

**Polished Aluminum finishes on table bases** should be cleaned with a commercial powder, liquid, or paste metal cleaner and polish. Follow the manufacturer's directions.

## Veneers and painted MDF

should be cleaned regularly with mild soap and water and dried with a soft cloth. *Tip: Never use ammonia-based cleaners or wax on wood surfaces.*

## Protecting Wood Surfaces

Use desk pads and coasters to help protect the finish against dents, scratches, moisture and hot and cold liquids. Do not use desk pads that have plastic backing. Use felt or leather pads on the bottoms of office equipment and accessories.

Periodically move desk accessories and other objects kept on the worksurface to ensure even aging.

Lift objects when you move them, instead of pulling or pushing them across the surface, to avoid scratching the surface. Avoid leaving vinyl binders on worksurface for long periods.

If you use a protective glass top, insert felt pads between the glass and the worksurface, to create an air space and allow the wood to breathe.

Keep your furniture away from direct sunlight. Avoid extreme temperatures and humidity. Maintain temperatures between 60 and 80 degrees Fahrenheit and humidity levels between 30 and 50 percent.

## Cleaning Wood Surfaces

Keep a supply of soft, clean, absorbent cloths handy for wiping up spills and regular dusting.

To dust, wipe with a slightly damp, soft cloth, using another soft cloth to dry. Always wipe the surface in the direction of the woodgrain.

Use a quality cleaner or flax soap formulated especially for use on wood surfaces. Do not use oils or ammonia. Dilute the cleaner as directed by the manufacturer. Dampen but do not saturate a soft cloth with the diluted cleaning solution. Wipe the surface in the direction of the woodgrain to remove dirt and fingerprints. Wipe the surface clean with a soft, dry cloth.

# Care and Maintenance

**For Carl Hansen Wood  
Finishes:**

**Oil/White Pigmented Oil:**  
Wipe clean with damp cloth.  
Wood should be treated twice  
per year on all surfaces, or as  
needed to remove scratches  
and stubborn stains.

**Stain/Varnish, Clear lacquer,  
CHS Color:**  
Wipe clean with damp cloth.

**Vinyl**  
Under normal use, clean with  
soft cloth dampened with mild  
soap solution. For stubborn  
stains and spills, a sponge or  
soft brush may be used with  
mild non-abrasive cleaner.

**Transolid/Corian:**  
Clean regularly with mild soap  
and water. Dry with a soft  
cloth.

**Tables should be inspected  
and maintained regularly** by  
tightening screws and bolts,  
inspecting casters and glides  
for damage, and inspecting  
all moving parts for damage  
and wear.

# Trademark List

- ® The following are registered trademarks for products of Steelcase Inc. or one of its related corporate entities: 4 o'clock, 900 Series, à la carte, Airtouch, Ally, Amia, Answer, Archipelago, Avenir, Ballet, Bix, Brayton International, Cachet, Canopy, Canto, Chancellor, Coalesse, Confidante, Context, Convene, CopyCam, Criterion, Crushed Can, Currency, dash, Designtex, Details, Detour, Drive, Elective Elements, Ellipse, Ember Chrome, Emerge, E-Table 2, FYI, Garland, Gentry, Ginkgo Biloba, Groupwork, Ideo, Jacket, Jenny, Jersey, Kart, Kick, LaCosta, Leap, Let's B, LiveBack, Max-Stacker, media:scape, Metro, Migrations, Mitra, Montage, Nurture, Oriana, Parade, Pathways, PCT, Permiso, Player, PolyVision, Portal, Power Pincher, Progeny, Protégé, R2, Rally, Relevant, Reply, Rizzi Arc, Sensor, Series 9000, Siento, Sieste, Sine, Softcare, Springboard, Steelcase, Steelcase Design Partnership, Stella, Stow Davis, Swathmore, TeamWork, Technique, Texpress, Think, Thunder, Topo, Train, Turnstone, Underline, Unison, Vecta, Viridian, Walden, Werndl, and X-Stack.
- ® The following registered trademarks are under license from AWI Licensing Company, Dover, DE: SoundScapes, DuraBrite, BioBlock, and Armstrong.
- ® The following registered trademarks are under license from Byrne Electrical, Rockford, MI: Interport, Mini-Port, Axil Z, and Ellora.
- ® The following is a registered trademark of DuPont, Wilmington, DE: Corian.
- ® The following is a registered trademark of Genlyte Thomas Company, Louisville, KY: Lightolier.
- ® The following is a registered trademark of Hilti Corporation, FL-9494 Schaan, Principality of Liechtenstein: Hilti.
- ® The following is a registered trademark of Leviton Manufacturing Company, Little Neck, NY: Decora.
- ® The following is a registered trademark of Mechanical Plastics Corp, Elmsford, NY: Toggler.
- ® The following is a registered trademark of Microsoft Corporation, Redmond, WA: Microsoft.
- ® The following is a registered trademark of Panduit Corporation, Lockport, IL: Panduit.
- ® The following is a registered trademark of Trav (Press), Cuneo, Italy: Assisa.
- ® The following is a registered trademark of Virtual Ink, Boston, MA: mimioActive.
- ® The following registered trademarks are under license from Wilkhahn Furniture Products: Avera, Senzo, Versal, and Wilkhahn FS.
- ® The following is a registered trademark of Wilsonart International, Temple, TX: Chemsurf.

- ® The following is a registered trademark of Wiremold, West Hartford, CT: Wiremold.
- ® The following is a registered trademark of EMU Group S.P.A., Perugia, Italy: Emu.
- ™ The following are trademarks for products of Steelcase Inc. or one of its related corporate entities: Access, Active/Passive Shelf, Ainsley, Akira, Alcove, Alerion, aight, Amaris, American Elect, American Tradition, ap40, Arbor, Arriva, Asana, Ascot, Aspekt, Astor, Await, Bira, Bivi, Bottomline, Brook, Buoy, Burton, c:scape, Calla, Calm, Camber, Campfire, Capa, Cappuccino, Cesar, Chester, Chord, Circa, Clarendon, Classic Rectangular, cobi, Collaboration, Community, Company, Convey, Cortex, Coupe, Crea, Crew, Cura, Cypress, Davenport, Dearborn, Deck, Déjà, Denizen, Denska, Derby, Divisio, Donovan, Dune, Duo, e³, e³ ceramicsteel, e³ environmental ceramicsteel, Echo, Edge, Elsna, Empath, Empress, Enea, ño, EnSync, Enviro, Escapade, Exchange, Exponents, Field, Flat Top, FlexFrame, Flip Top, Flute, Folio, FrameOne, FreeFlow, Frontier, Galilei, Gesture, Ginger, Ginkgo, Go Wall, Grip, Groove, Hatchback, Hawthorne, Hitch, Host Collection, Hosu, Huddleboard, i2i, Impact, Indy, InfoLink, IOS, I-Solve, Jack, Jarrah, Jetty, Juice, Kami, Kast, Kathryn, Lagunitas, Lark, L'Attitude, LearnLab, Leela, Lincoln, Linden, LiveSeat, Loria, Lyric, Malibu, Malibu Too, Mansfield, Marathon, Martini, Mason, Masque, Millbrae, Mineral, Mingle, Mystic, Mystic Metal, Mystic Wood, Montreal, Move, Nadia, Neighbor, nesso, Nickel, Nikko, Nod, Node, Norfolk, Ontrak, Oom, Opus, Orchid, Outlook Collection, Ovation, Paloma, Paperflo, Parliament, Pasio, Passerelle, Patriarch, Payback, Peek, Pile File, Pisa, Pool, PUCK, QiVi, Quba, Rave, Reed, Regard, Relay, Reunion, Ripple, Riser, Rocco, Rocky, RoomWizard, Runner, Satellite, Sawyer, ScapeSeries, Senti, Sentinel, Senza, Sequoia, Session, ShareLink, Shield, Shortcut, Sidewalk, Skylar, Slumber, Smoke, Snug, Soft Leaf, Sonata, Sorrel, SOTO, Stationkits, Stiletto, Surprise!, Switch, Symphony, Sync, TagWizard, Tava, TeamStudio, TeamTheater, Tenaro, Terrazzo, Theorem, Thread, Topaz, Touchdown, Tour, Tower Too, Trees, Trillium, Trolley, tX2, U-Free, Uno, V.I.A., Verb, Verge, Victor2, Visalia, Waldorf, Woodruff, Workspring, and X-tenz.
- ™ The following is a trademark of Microsoft Corporation, Redmond, WA: Windows.
- ™ The following is a trademark of Rodman Industries, Inc., Oconomowoc, WI: ResinCore1.
- ™ The following is a trademark of Ultrafabrics, LLC, Elmsford, NY: Ultraleather.
- ™ The following trademarks are under license from Wilkhahn Furniture products: Cana, Linus, Logon, Picto, Range, Stitz, Thema, Timetable, and Tubis.
- ™ The following is a trademark of MBDC, Charlottesville, VA: Cradle to Cradle and C2C.

- ™ The following trademarks are under license from Walter Knoll: Andoo, Bob, Lazlo, Lox, Ribbon, and Together.
  - ™ The following trademarks are under license from PP Möbler: Bar and Flag Halyard.
  - ™ The following trademarks are under license from Viccarbe: Davos, Holy Day, Last Minute, RS, and Wrapp.
  - ™ The following trademarks are under license from Carl Hansen: Elbow, Paddle, Shell, Wing, and Wishbone.
  - ™ The following trademarks are under license from Cambridge Sound Management, LLC, Cambridge, MA: QtPro Soundmasking, Qt Quiet Technology, and Sonet Qt.
  - ™ The following is a trademark of Electri-Cable Assemblies, Shelton, CT: Interact.
- Trademarks used here in are the property of Steelcase, Inc. or of their respective owners.*